

1. Overview

Report Production Date:
22-Apr-2015

Data Used:	OFFLINE L1B and L2 Science Data	Geophysical Ocean Products (GOP) L1B and L2 Science Data
Check	Status	Status
Server check: science-pds.cryosat.esa.int	Nominal	Nominal
Server check: calval-pds.cryosat.esa.int	Nominal	Nominal
Product Software Check	Nominal	Nominal
Product Format Check	Nominal	Nominal
Product Header Analysis	Nominal	Nominal
Auxiliary Data File Usage Check	Nominal	Nominal
Auxiliary Correction Data Check	Nominal	Nominal
Measurement Confidence Data Check	See Section 4.5 and 5.5	See Section 7.5, 7.6, 8.5 and 8.6

Mission / Instrument News

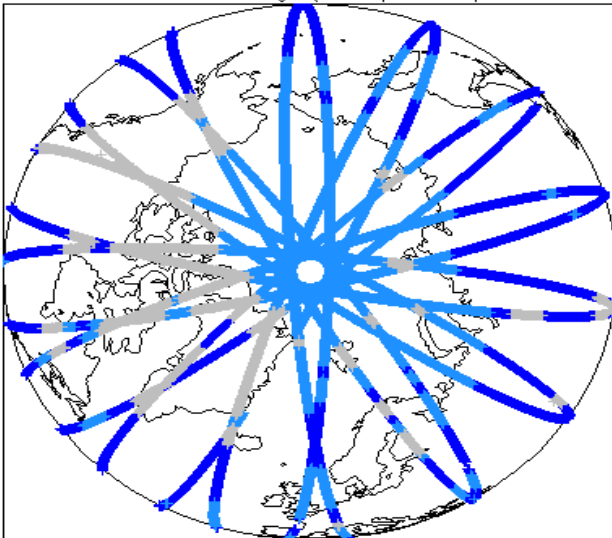
03-Mar-2015	Data generated with new Baseline-C IPFs but old GDR-D orbit files.
04-Mar-2015	Data generated with new Baseline-C IPFs but old GDR-D orbit files.
05-Mar-2015	Data generated with new Baseline-C IPFs but old GDR-D orbit files.

Report Contents

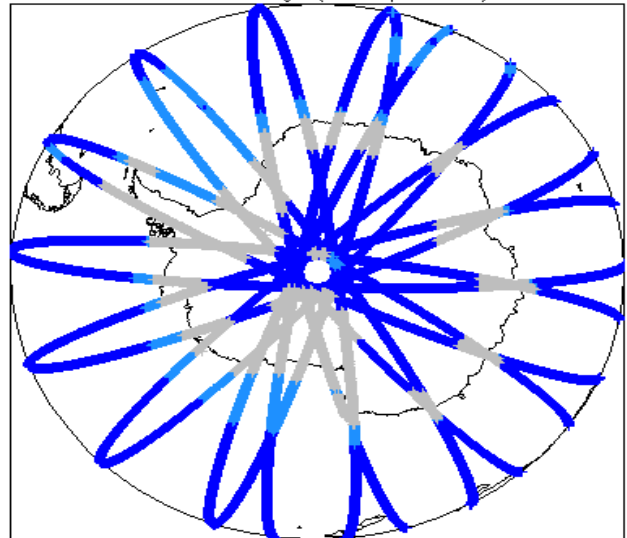
2	Global Coverage	OFFLINE Science Data	4	Level 1B Data Quality Check	GOP Science Data	7	Level 1B Data Quality Check
3	Instrument Configuration	4.1	L1B Product Format Check	7.1	L1B Product Format Check		
		4.2	L1B Product Header Analysis	7.2	L1B Product Header Analysis		
		4.3	L1B Auxiliary Data File Usage Check	7.3	L1B Auxiliary Data File Usage Check		
		4.4	L1B Auxiliary Correction Error Check	7.4	L1B Auxiliary Correction Error Check		
		4.5	L1B Measurement Confidence Data Check	7.5	L1B Measurement Confidence Data Check		
				7.6	L1B Waveform Group Data Check		
		5	Level 2 Data Quality Check	8	Level 2 Data Quality Check		
		5.1	L2 Product Format Check	8.1	L2 Product Format Check		
		5.2	L2 Product Header Analysis	8.2	L2 Product Header Analysis		
		5.3	L2 Auxiliary Data File Usage Check	8.3	L2 Auxiliary Data File Usage Check		
		5.4	L2 Auxiliary Correction Error Check	8.4	L2 Measurement Confidence Data Check		
		5.5	L2 Measurement Quality Flag Check	8.5	L2 Range Measurement Check		
		6	QCC Check	8.6	L2 SWH and Backscatter Measurement Check		
		6.1	QCC Errors				
		6.2	Missing QCC Reports				

2. Global Coverage

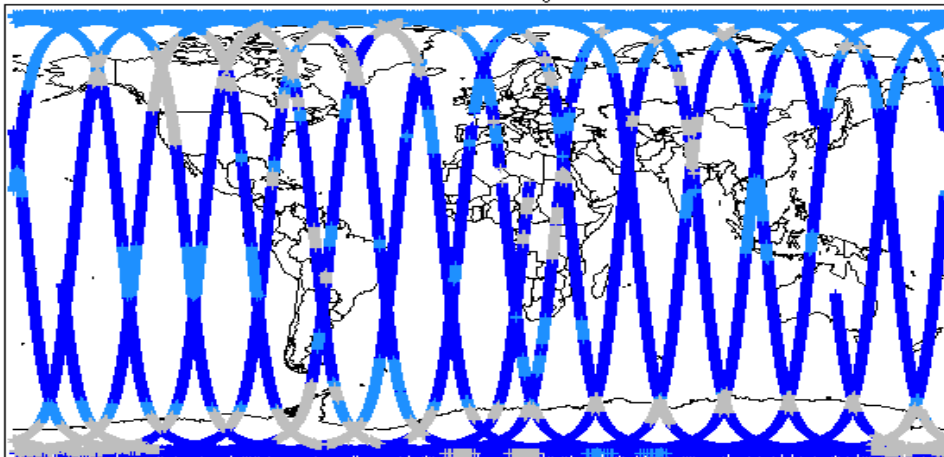
Global Coverage (north pole view)



Global Coverage (south pole view)

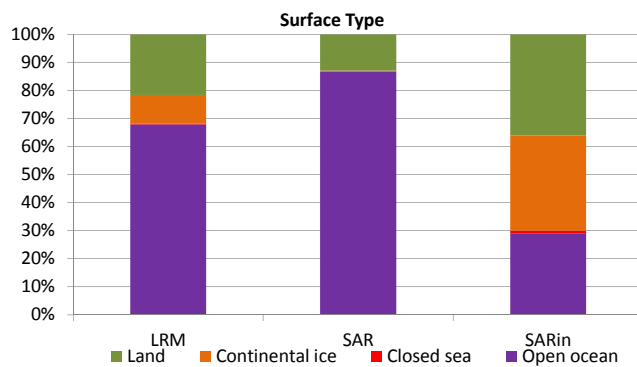
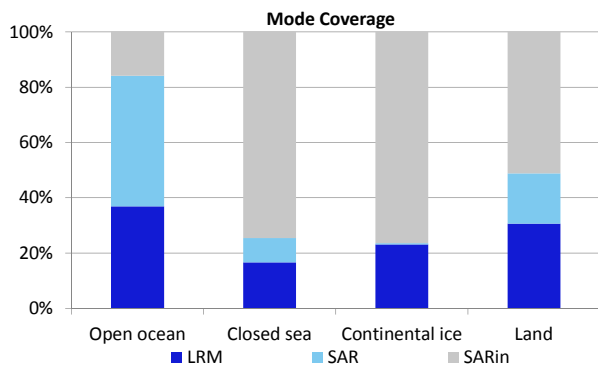


Global Coverage



Mode Coverage (%)

	LRM	68.09
	SAR	19.25
	SIN	12.44



3. Instrument Configuration

The SIRAL instrument configuration for the day of acquisition is provided below.

SIRAL instrument(s) in use:	SIRAL - A
-----------------------------	-----------

4. OFFLINE Level 1B Data Quality Check

4.1 L1B Product Format Check

Each product, retrieved and unpacked from the science server, is checked to ensure it consists of both an XML header file (.HDR) and a product file (.DBL).

Number of products with errors: 0

4.2 L1B Product Header Analysis

For all products, a series of pre-defined checks are performed on the MPH and SPH in order to identify any inconsistencies and/or errors raised by the ground-segment processing chain.

Number of products with errors: 0

4.3 L1B Auxiliary Data File Usage Check

Each product is checked for missing Data Set Descriptors with respect to a pre-determined baseline and also to check the validity of Auxiliary Data Files is correct.

Number of products with errors: 0

4.4 L1B Auxiliary Correction Error Check

Each product is checked for auxiliary corrections flagged by the ground-station processing chain as missing or containing errors.

Number of products with errors: 0

4.5 L1B Measurement Confidence Data Check

CryoSat L1B data includes a measurement confidence flag word (field 18) for each measurement record. The bit value of this flag indicates any problems when set.

Number of products with errors: 1

Product	Test Failed	Description
CS_OFFL_SIR_LRM_1B_20150304T153453_20150304T154720_C001	Echo error	The tracking echo has returned an error

5. OFFLINE Level 2 Data Quality Check

5.1 L2 Product Format Check

Each product, retrieved and unpacked from the science server, is checked to ensure it consists of both an XML header file (.HDR) and a product file (.DBL).

Number of products with errors: 0

5.2 L2 Product Header Analysis

For all products, a series of pre-defined checks are performed on the MPH and SPH in order to identify any inconsistencies and/or errors raised by the ground-segment processing chain.

Number of products with errors: 0

5.3 L2 Auxiliary Data File Usage Check

Each product is checked for missing Data Set Descriptors with respect to a pre-determined baseline and also to check the validity of Auxiliary Data Files is correct.

Number of products with errors: 0

5.4 L2 Auxiliary Correction Error Check

Each product is checked for auxiliary corrections flagged by the ground-station processing chain as missing or containing errors.

Number of products with errors: 0

5.5 L2 Measurement Quality Flag Check

CryoSat L2 data includes a quality flag word (field 50) for each 20-Hz measurement record. The bit value of this flag is an assessment of the measurement quality by the processing chain.

There are several common Quality Flag errors raised in the L2 products which are either expected due to operational mode or surface type, or are under investigation. These known issues are summarised below, followed by a table of any additional issues arising from this test.

Freeboard error: This flag is correctly set in all L2 SAR products that are not discriminated as sea-ice, and for which freeboard cannot be calculated.

SARin x-track angle error: This flag is set when the difference between the computed surface elevation and the DEM is >50m. The DEM is only available over Greenland and Antarctica and therefore this flag is set for L2 SIN products in all other locations.

Height error and Backscatter errors: The height error and backscatter error flags are set for a number of products over land areas, but this is to be expected.

SSHA interpolation error: This flag is currently set for a number of products in all modes. This issue is under investigation.

Number of products with errors: 29

Product	Test Failed	Description
CS_OFFL_SIR_SAR_2__20150304T011413_20150304T012350_C001	Peakiness error	There is an error in the peakiness derivation
CS_OFFL_SIR_SAR_2__20150304T012817_20150304T013159_C001	Peakiness error	There is an error in the peakiness derivation
CS_OFFL_SIR_SAR_2__20150304T025547_20150304T030144_C001	Peakiness error	There is an error in the peakiness derivation
CS_OFFL_SIR_SAR_2__20150304T033817_20150304T034518_C001	Peakiness error	There is an error in the peakiness derivation
CS_OFFL_SIR_SAR_2__20150304T043354_20150304T044025_C001	Peakiness error	There is an error in the peakiness derivation
CS_OFFL_SIR_SAR_2__20150304T050253_20150304T050506_C001	Peakiness error	There is an error in the peakiness derivation
CS_OFFL_SIR_SAR_2__20150304T055036_20150304T055215_C001	Peakiness error	There is an error in the peakiness derivation
CS_OFFL_SIR_SAR_2__20150304T055458_20150304T055924_C001	Peakiness error	There is an error in the peakiness derivation
CS_OFFL_SIR_SAR_2__20150304T061539_20150304T061958_C001	Peakiness error	There is an error in the peakiness derivation
CS_OFFL_SIR_SAR_2__20150304T062208_20150304T062303_C001	Peakiness error	There is an error in the peakiness derivation
CS_OFFL_SIR_SAR_2__20150304T062532_20150304T062610_C001	Peakiness error	There is an error in the peakiness derivation
CS_OFFL_SIR_SAR_2__20150304T075122_20150304T075913_C001	Peakiness error	There is an error in the peakiness derivation
CS_OFFL_SIR_SAR_2__20150304T092941_20150304T093947_C001	Peakiness error	There is an error in the peakiness derivation
CS_OFFL_SIR_SAR_2__20150304T111122_20150304T111219_C001	Peakiness error	There is an error in the peakiness derivation
CS_OFFL_SIR_SAR_2__20150304T111313_20150304T112102_C001	Peakiness error	There is an error in the peakiness derivation
CS_OFFL_SIR_SAR_2__20150304T115920_20150304T120138_C001	Peakiness error	There is an error in the peakiness derivation
CS_OFFL_SIR_SAR_2__20150304T125250_20150304T130403_C001	Peakiness error	There is an error in the peakiness derivation
CS_OFFL_SIR_SAR_2__20150304T143242_20150304T144034_C001	Peakiness error	There is an error in the peakiness derivation
CS_OFFL_SIR_SAR_2__20150304T161148_20150304T161715_C001	Peakiness error	There is an error in the peakiness derivation
CS_OFFL_SIR_SAR_2__20150304T163818_20150304T164021_C001	Peakiness error	There is an error in the peakiness derivation
CS_OFFL_SIR_SAR_2__20150304T170714_20150304T170947_C001	Peakiness error	There is an error in the peakiness derivation
CS_OFFL_SIR_SAR_2__20150304T175049_20150304T175745_C001	Peakiness error	There is an error in the peakiness derivation
CS_OFFL_SIR_SAR_2__20150304T181127_20150304T181943_C001	Peakiness error	There is an error in the peakiness derivation
CS_OFFL_SIR_SAR_2__20150304T191516_20150304T191604_C001	Peakiness error	There is an error in the peakiness derivation
CS_OFFL_SIR_SAR_2__20150304T195221_20150304T195459_C001	Peakiness error	There is an error in the peakiness derivation
CS_OFFL_SIR_SAR_2__20150304T210640_20150304T211441_C001	Peakiness error	There is an error in the peakiness derivation
CS_OFFL_SIR_SAR_2__20150304T211502_20150304T211735_C001	Peakiness error	There is an error in the peakiness derivation
CS_OFFL_SIR_SAR_2__20150304T224516_20150304T225248_C001	Peakiness error	There is an error in the peakiness derivation
CS_OFFL_SIR_SAR_2__20150304T225307_20150304T225458_C001	Peakiness error	There is an error in the peakiness derivation

6. OFFLINE QCC Check

The QCC is a CryoSat facility that performs a primary survey of data products immediately after production by the PDS and LTA processing facilities. A list of the tests which raised errors or warnings is provided below.

NB. There is currently a discrepancy between the number of QCC reports and the number of products reported. This is a known issue and investigation is on-going.

Product type	Nb. Products	Nb. QCC Reports	Nb. Valid	Nb. Warnings	Nb. Errors
SIR_GDR_2A	17	0	0	0	0
SIR_LRM_1B	163	0	0	0	0
SIR_LRM_2	162	0	0	0	0
SIR_SAR_1B	124	0	0	0	0
SIR_SAR_2A	122	0	0	0	0
SIR_SIN_1B	97	0	0	0	0
SIR_SIN_2	97	0	0	0	0

6.1 QCC Errors

Number of products with QCC errors: 0

6.2 Missing QCC Reports

Number of products with missing QCC reports: All

7. GOP Level 1B Data Quality Check

7.1 L1B Product Format Check

Each product, retrieved and unpacked from the science server, is checked to ensure it consists of both an XML header file (.HDR) and a product file (.DBL).

Number of products with errors: 0

7.2 L1B Product Header Analysis

For all products, a series of pre-defined checks are performed on the MPH and SPH in order to identify any inconsistencies and/or errors raised by the ground-segment processing chain.

Number of products with errors: 0

7.3 L1B Auxiliary Data File Usage Check

Each product is checked for missing Data Set Descriptors with respect to a pre-determined baseline and also to check the validity of Auxiliary Data Files is correct.

Number of products with errors: 0

7.4 L1B Auxiliary Correction Error Check

Each product is checked for auxiliary corrections flagged by the ground-station processing chain as missing or containing errors.

Number of products with errors: 0

7.5 L1B Measurement Confidence Data Check

CryoSat L1B data includes a measurement confidence flag (field 12) for each measurement record. The bit value of this flag indicates any problems when set.

Number of products with errors: 1

Product	Test Failed	Description
CS_OFFL_SIR_GOP_1B_20150304T153453_20150304T154720_B001	Power scaling error	There has been an error in the scaling of the L1B waveform

7.6 L1B Waveform Group Data Check

CryoSat L1B data includes a waveform data flag (field 65) for each measurement record. The bit value of this flag indicates any problems when set.

Loss of Echo Flag: This flag is currently set for a large number of products over land, indicating that the tracking echo is missing.

Number of products with errors: 46

8. GOP Level 2 Data Quality Check

8.1 L2 Product Format Check

Each product, retrieved and unpacked from the science server, is checked to ensure it consists of both an XML header file (.HDR) and a product file (.DBL).

Number of products with errors: 0

8.2 L2 Product Header Analysis

For all products, a series of pre-defined checks are performed on the MPH and SPH in order to identify any inconsistencies and/or errors raised by the ground-segment processing chain.

Number of products with errors: 0

8.3 L2 Auxiliary Data File Usage Check

Each product is checked for missing Data Set Descriptors with respect to a pre-determined baseline and also to check the validity of Auxiliary Data Files is correct.

Number of products with errors: 0

8.4 L2 Measurement Confidence Data Check

CryoSat L2 data includes a quality flag (field 14) for each 20-Hz measurement record. The bit value of this flag is an assessment of the measurement quality by the processing chains.

Number of products with errors: 0

8.5 L2 Range Measurement Check

Each product is checked to detect range measurements flagged by the processing chain as missing or containing errors.

Ocean Range Averaging Status Flag: This flag is currently set for products over land and sea ice, but this is to be expected.

Ice Range Averaging Status Flag: This flag is currently set for some products over land and continental ice.

Number of products with errors: 246

8.6 L2 SWH and Backscatter Measurement Check

Each product is checked to detect parameters related to SWH and sigma0 that are flagged by the processing chain as missing or containing errors.

SWH Averaging Status Flag: This flag is currently set for products over land and sea ice, but this is to be expected.

Ocean Backscatter Averaging Status Flag: This flag is currently set for products over land and sea ice, but this is to be expected.

Ice Backscatter Averaging Status Flag: This flag is currently set for some products over land and continental ice.

Number of products with errors: 209