

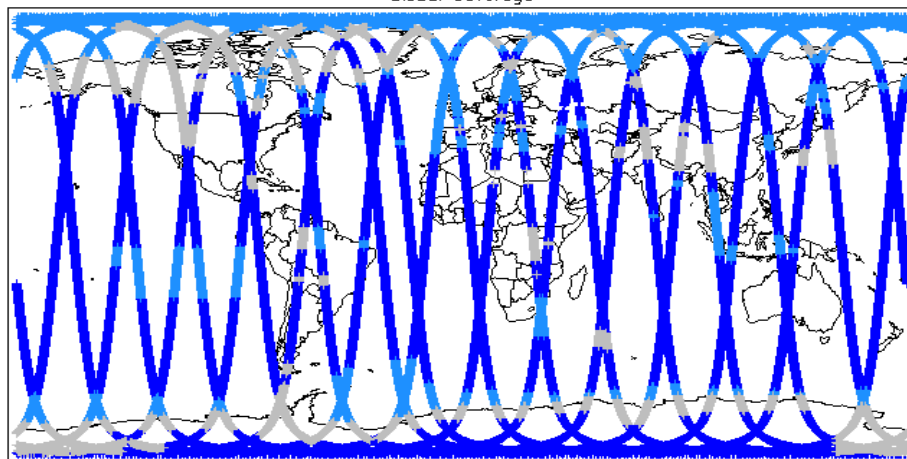
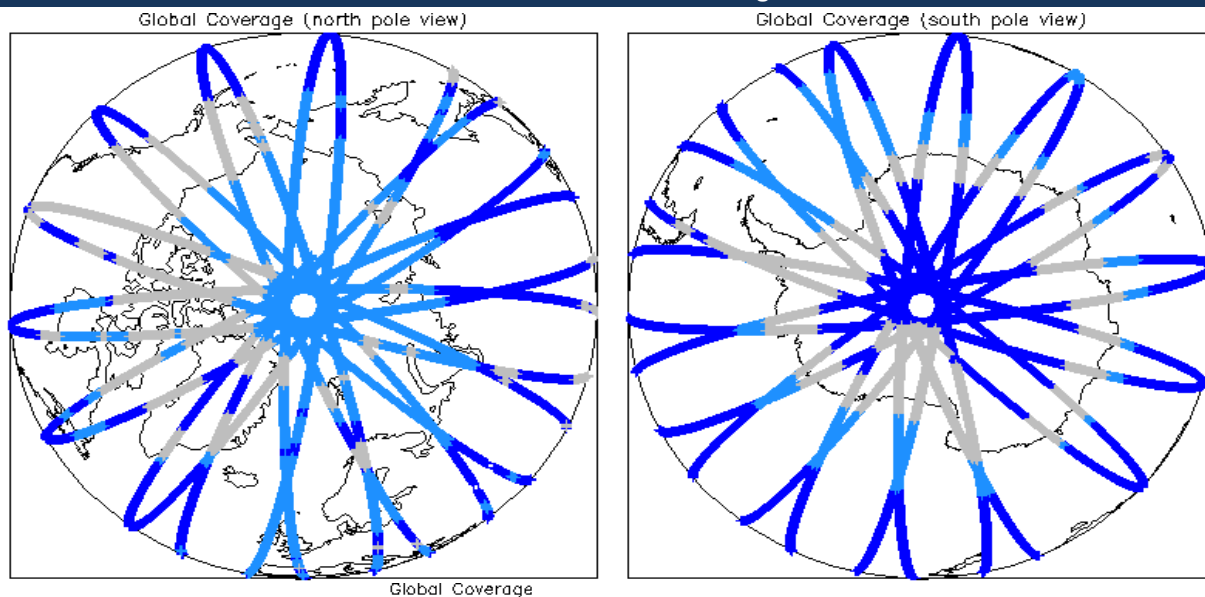
1. Overview

Report Production Date:	04-Jul-2013
Data Used:	OFFLINE L1B and L2 Science Data

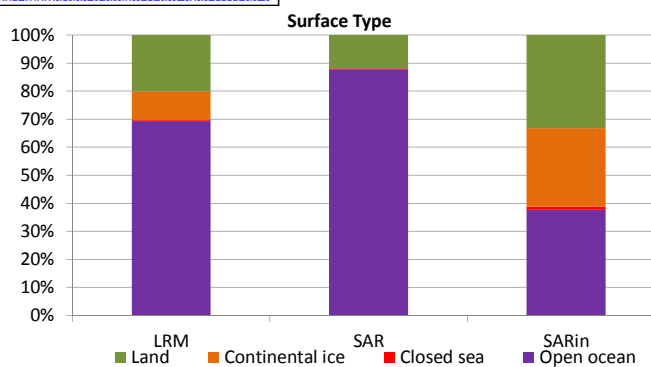
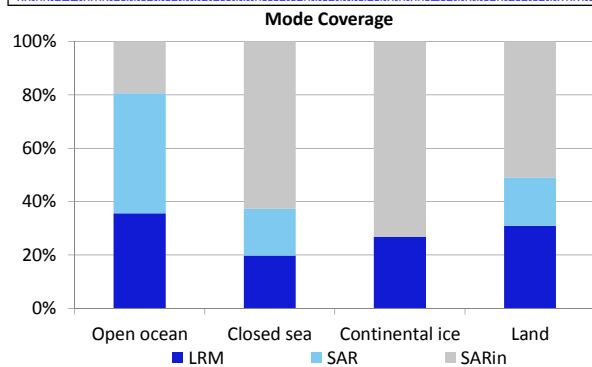
Check	Status
Server check: science-pds.cryosat.esa.int	Nominal
Server check: calval-pds.cryosat.esa.int	Nominal
Product Software Check	Nominal
Product Format Check	Nominal
Product Header Analysis	Nominal
Auxiliary Data File Usage	See Section 5.3
Auxiliary Correction Check	See Section 4.5 and 5.4
Measurement Data Set Check	See Section 4.6 and 5.5

Mission / Instrument News	
07-May-2013	None
08-May-2013	None
09-May-2013	Nothing planned

2. Global Coverage



Mode Coverage(%)		
	LRM	66.04
	SAR	20.30
	SARin	13.49



3. Instrument Configuration

The SIRAL instrument configuration for the day of acquisition is provided below.

SIRAL instrument(s) in use:	SIRAL - A
Star Tracker(s) in use:	Star Tracker 2

4. Level 1B Data Quality Check

4.1 L1B Software Version Check

N.b. There were a number of orders processed prior to the installation of the new IPF1 Vk2.0, IPF2 Vk1.0. The affected L1B products, listed below, have the old software version referenced in the product header.

Number of products with errors: 0

4.2 L1B Product Format Check

Each product, retrieved and unpacked from the science server, is checked to ensure it consists of both an XML header file (.HDR) and a product file (.DBL).

Number of products with errors: 0

4.3 L1B Product Header Analysis

For all products, a series of pre-defined checks are carried out on the MPH and SPH in order to identify any inconsistencies and/or errors raised by the ground-segment processing chain.

Number of products with errors: 0

4.4 L1B Auxiliary Data File Usage Check

Each product is checked for missing Data Set Descriptors wrt a pre-determined baseline and also to check the validity of Auxiliary Data Files is correct.

Number of products with errors: 0

4.5 L1B Flagged Auxiliary Correction Error Check

Each product is checked to spot auxiliary corrections flagged by the ground-station processing chain as missing or containing errors

Number of products with errors: 4

Product	Test Failed
CS_OFFL_SIR_LRM_1B_20130507T235353_20130508T000232_B001	Dynamic atmosphere correction error
CS_OFFL_SIR_LRM_1B_20130508T055418_20130508T060115_B001	Dynamic atmosphere correction error
CS_OFFL_SIR_LRM_1B_20130508T114123_20130508T120623_B001	Dynamic atmosphere correction error
CS_OFFL_SIR_LRM_1B_20130508T175231_20130508T180339_B001	Dynamic atmosphere correction error

4.6 L1B Measurement Confidence Data Check

CryoSat L1B data includes a measurement confidence flag word (field 14) for each measurement record. The bit value of this flag indicates any problems when set.

Number of products with errors: 12

Product	Test Failed	Description
CS_OFFL_SIR_LRM_1B_20130508T082226_20130508T085604_B001	Attitude correction missing	The attitude has not been corrected
CS_OFFL_SIR_LRM_1B_20130508T132017_20130508T133541_B001	Attitude correction missing	The attitude has not been corrected
CS_OFFL_SIR_LRM_1B_20130508T143219_20130508T143443_B001	TRK echo error	The tracking echo has returned an error
CS_OFFL_SIR_LRM_1B_20130508T152138_20130508T152402_B001	TRK echo error	The tracking echo has returned an error
CS_OFFL_SIR_LRM_1B_20130508T184805_20130508T184942_B001	TRK echo error	The tracking echo has returned an error
CS_OFFL_SIR_SAR_1B_20130508T085730_20130508T085738_B001	Attitude correction missing	The attitude has not been corrected
CS_OFFL_SIR_SAR_1B_20130508T085818_20130508T085838_B001	Attitude correction missing	The attitude has not been corrected
CS_OFFL_SIR_SAR_1B_20130508T133542_20130508T133743_B001	Attitude correction missing	The attitude has not been corrected
CS_OFFL_SIR_SIN_1B_20130508T085604_20130508T085730_B001	Attitude correction missing	The attitude has not been corrected
CS_OFFL_SIR_SIN_1B_20130508T085738_20130508T085818_B001	Attitude correction missing	The attitude has not been corrected
CS_OFFL_SIR_SIN_1B_20130508T085838_20130508T085858_B001	Attitude correction missing	The attitude has not been corrected
CS_OFFL_SIR_SIN_1B_20130508T143147_20130508T143219_B001	Attitude correction missing	The attitude has not been corrected

5. Level 2 Data Quality Check

5.2 L2 Product Header Analysis

For all products, a series of pre-defined checks are carried out on the MPH and SPH in order to identify any inconsistencies and/or errors raised by the ground-segment processing chain

Number of products with errors: 0

5.3 L2 Auxiliary Data File Usage Check

Each product is checked for missing Data Set Descriptors wrt a pre-determined baseline and also to check the validity of Auxiliary Data Files is correct

Number of products with errors: 2

Product	AUX File	Comment
CS_OFFL_SIR_GDR_2A_20130507T224442_20130508T002355_B001	CS_OPER_AUX_ORBDOR_20130506T215525_20130508T002325_0001	Coverage missing for intervals [2013-05-08T00:23:25, 2013-05-08T00:23:55]
CS_OFFL_SIR_GDR_2A_20130508T233305_20130509T011218_B001	CS_OPER_AUX_ORBDOR_20130507T215525_20130509T002325_0001	Coverage missing for intervals [2013-05-09T00:23:25, 2013-05-09T01:12:18]

5.4 L2 Flagged Auxiliary Correction Error Check

Each product is checked to spot auxiliary corrections flagged by the ground-station processing chain as missing or containing errors

Number of products with errors: 4

Product	Test Failed
CS_OFFL_SIR_LRM_2_20130507T235353_20130508T000232_B001	Dynamic atmosphere correction error
CS_OFFL_SIR_LRM_2_20130508T055418_20130508T060115_B001	Dynamic atmosphere correction error
CS_OFFL_SIR_LRM_2_20130508T114123_20130508T120623_B001	Dynamic atmosphere correction error
CS_OFFL_SIR_LRM_2_20130508T175231_20130508T180339_B001	Dynamic atmosphere correction error

5.5 L2 Measurement Quality Flag Check

CryoSat L2 data includes a quality flag word (field 43) for each 20-Hz measurement record. The bit value of this flag is an assessment of the measurement quality by the ground-segment processing chains

Presently, there are several common data Quality Flag errors raised by the Level 2 products which are either expected due to changes made to the IPF processor in Baseline B or else are due to known issues with the data processors. The investigation of the known issues are on-going and are due to be resolved with the next update of the Level 2 processors. All common known issues are summarised in the list below, followed by a table highlighting any additional issues which may arise from this test.

Freeboard Error: This Quality Flag is correctly set in all products as this parameter is currently not provided in the L2 products and the Freeboard value is presently set to the default value of -9999.

SARin x-track angle error: Currently there is an on-going investigation into the high number of errors from the 'SARin x-track Error' Quality Flag over Antarctica.

Height error and Backscatter error: It has been noted that the number of errors arising from the 'Backscatter Error' and 'Height Error' Quality Flag is much higher than expected over land areas and this is currently part of an on-going investigation by expert teams.

Number of products with errors: 3

Product	Test Failed	Description
CS_OFFL_SIR_SIN_2_20130508T085604_20130508T085729_B001	Calibration warning	The Cal correction is missing or has been taken from the IPFDB as opposed to the Calibration products
CS_OFFL_SIR_SIN_2_20130508T085738_20130508T085817_B001	Calibration warning	The Cal correction is missing or has been taken from the IPFDB as opposed to the Calibration products
CS_OFFL_SIR_SIN_2_20130508T085838_20130508T085858_B001	Calibration warning	The Cal correction is missing or has been taken from the IPFDB as opposed to the Calibration products

6. QCC Check

The QCC is a CryoSat facility that performs a primary survey of data products immediately after production by the PDS and LTA processing facilities. A list of the tests which raised errors or warnings is provided below.

Nb. There is currently a discrepancy between the number of QCC reports and the number of products reported. This is a known issue and investigation is on-going.

Product type	Nb. Products	Nb. QCC Reports	Nb. Valid	Nb. Warnings	Nb. Errors
SIR_GDR_2A	22	20	0	20	0
SIR_LRM_1B	129	130	101	29	0
SIR_LRM_2	130	129	0	129	0
SIR_SAR_1B	103	106	0	106	0
SIR_SAR_2A	106	106	3	103	0
SIR_SIN_1B	99	99	0	99	0
SIR_SIN_2	99	99	0	99	0

6.1 QCC Errors

Number of products with QCC errors: 0

6.2 Missing QCC Reports

Number of products with missing QCC reports: 3

Product name
CS_OFFL_SIR_GDR_2A_20130507T224442_20130508T002355_B001
CS_OFFL_SIR_LRM_1B_20130507T235353_20130508T000232_B001
CS_OFFL_SIR_LRM_2_20130507T235353_20130508T000232_B001