

1. Overview

Report Production Date:	24-May-2013
Data Used:	OFFLINE L1B and L2 Science Data

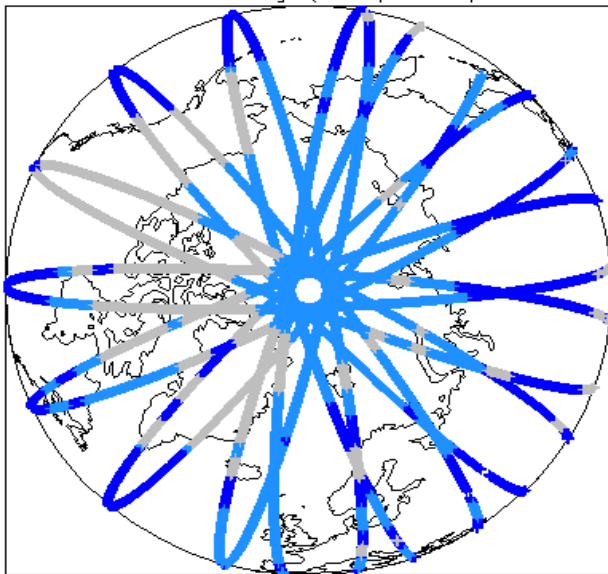
Check	Status
Server check: science-pds.cryosat.esa.int	Nominal
Server check: calval-pds.cryosat.esa.int	Nominal
Product Software Check	Nominal
Product Format Check	Nominal
Product Header Analysis	Nominal
Auxiliary Data File Usage	See Section 5.3
Auxiliary Correction Check	See Section 4.5 and 5.4
Measurement Data Set Check	See Section 4.6 and 5.5

Mission / Instrument News

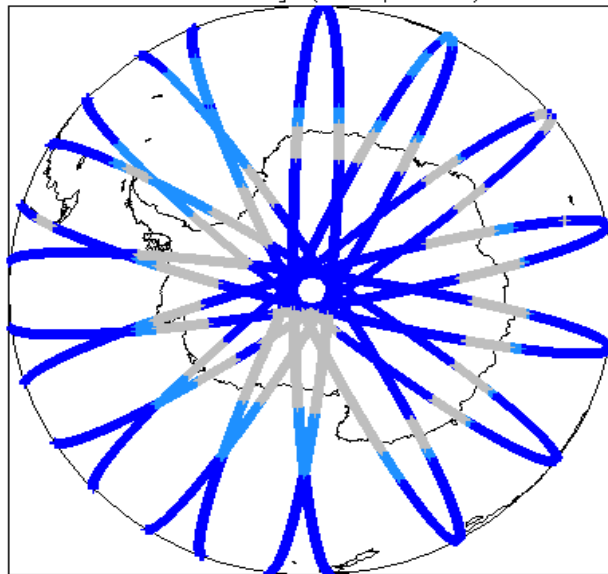
20-Apr-2013	None
21-Apr-2013	None
22-Apr-2013	Nothing planned

2. Global Coverage

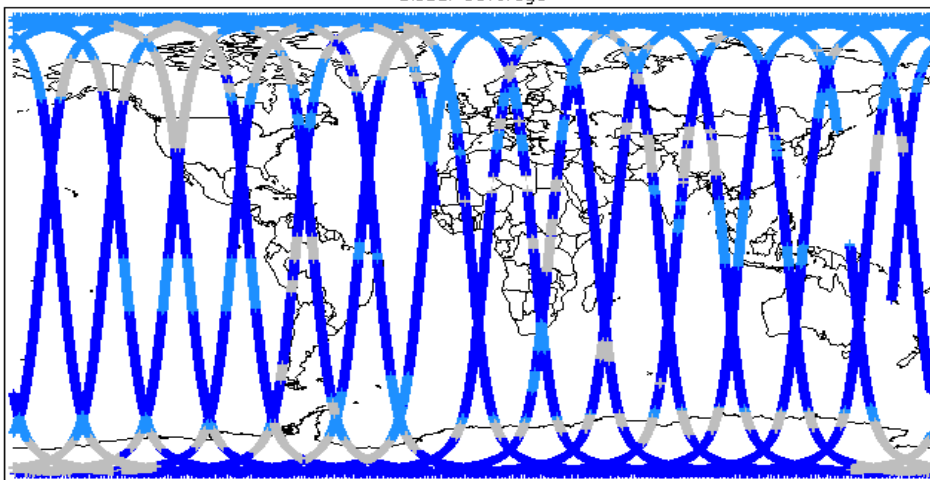
Global Coverage (north pole view)



Global Coverage (south pole view)



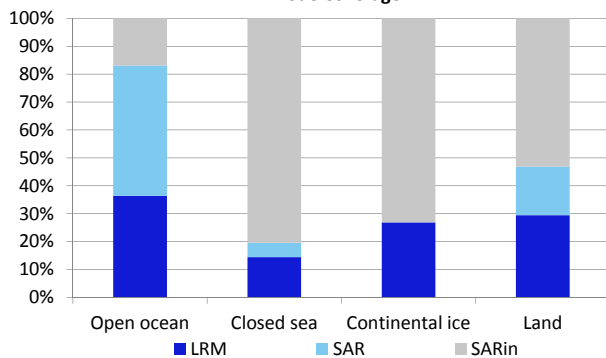
Global Coverage



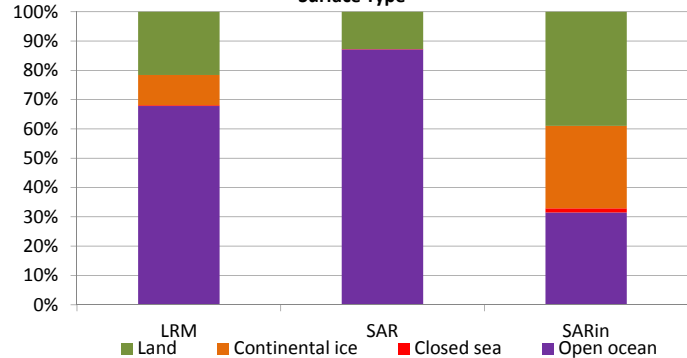
Mode Coverage(%)

LRM	65.12
SAR	21.44
SIN	13.25

Mode Coverage



Surface Type



3. Instrument Configuration

The SIRAL instrument configuration for the day of acquisition is provided below.

SIRAL instrument(s) in use:	SIRAL - A
Star Tracker(s) in use:	Star Tracker 2

4. Level 1B Data Quality Check

4.1 L1B Software Version Check

N.b. There were a number of orders processed prior to the installation of the new IPF1 Vk2.0, IPF2 Vk1.0. The affected L1B products, listed below, have the old software version referenced in the product header.

Number of products with errors: 0

4.2 L1B Product Format Check

Each product, retrieved and unpacked from the science server, is checked to ensure it consists of both an XML header file (.HDR) and a product file (.DBL).

Number of products with errors: 0

4.3 L1B Product Header Analysis

For all products, a series of pre-defined checks are carried out on the MPH and SPH in order to identify any inconsistencies and/or errors raised by the ground-segment processing chain.

Number of products with errors: 0

4.4 L1B Auxiliary Data File Usage Check

Each product is checked for missing Data Set Descriptors wrt a pre-determined baseline and also to check the validity of Auxiliary Data Files is correct.

Number of products with errors: 0

4.5 L1B Flagged Auxiliary Correction Error Check

Each product is checked to spot auxiliary corrections flagged by the ground-station processing chain as missing or containing errors

Number of products with errors: 4

Product	Test Failed
CS_OFFL_SIR_LRM_1B_20130420T235135_20130421T000354_B001	Dynamic atmosphere correction error
CS_OFFL_SIR_LRM_1B_20130421T174909_20130421T181203_B001	Dynamic atmosphere correction error
CS_OFFL_SIR_SAR_1B_20130421T055946_20130421T060039_B001	Dynamic atmosphere correction error
CS_OFFL_SIR_SAR_1B_20130421T115950_20130421T121004_B001	Dynamic atmosphere correction error

4.6 L1B Measurement Confidence Data Check

CryoSat L1B data includes a measurement confidence flag word (field 14) for each measurement record. The bit value of this flag indicates any problems when set.

Number of products with errors: 3

Product	Test Failed	Description
CS_OFFL_SIR_LRM_1B_20130421T034727_20130421T035819_B001	TRK echo error	The tracking echo has returned an error
CS_OFFL_SIR_LRM_1B_20130421T125138_20130421T130852_B001	Attitude correction missing	The attitude has not been corrected
CS_OFFL_SIR_SAR_1B_20130421T130852_20130421T130902_B001	Attitude correction missing	The attitude has not been corrected

5. Level 2 Data Quality Check

5.2 L2 Product Header Analysis

For all products, a series of pre-defined checks are carried out on the MPH and SPH in order to identify any inconsistencies and/or errors raised by the ground-segment processing chain

Number of products with errors: 0

5.3 L2 Auxiliary Data File Usage Check

Each product is checked for missing Data Set Descriptors wrt a pre-determined baseline and also to check the validity of Auxiliary Data Files is correct

Number of products with errors: 1

Product	AUX File	Comment
CS_OFFL_SIR_GDR_2A_20130419T230640_20130420T004554_B001	CS_OPER_AUX_ORBDOR_20130420T215525_20130422T002325_0001	Coverage missing for intervals [2013-04-22T00:23:25, 2013-04-22T00:43:27]

5.4 L2 Flagged Auxiliary Correction Error Check

Each product is checked to spot auxiliary corrections flagged by the ground-station processing chain as missing or containing errors

Number of products with errors: 4

Product	Test Failed
CS_OFFL_SIR_LRM_2_20130420T235135_20130421T000354_B001	Dynamic atmosphere correction error
CS_OFFL_SIR_LRM_2_20130421T174909_20130421T181203_B001	Dynamic atmosphere correction error
CS_OFFL_SIR_SAR_2A_20130421T055946_20130421T060039_B001	Dynamic atmosphere correction error
CS_OFFL_SIR_SAR_2A_20130421T115950_20130421T121004_B001	Dynamic atmosphere correction error

5.5 L2 Measurement Quality Flag Check

CryoSat L2 data includes a quality flag word (field 43) for each 20-Hz measurement record. The bit value of this flag is an assessment of the measurement quality by the ground-segment processing chains

Presently, there are several common data Quality Flag errors raised by the Level 2 products which are either expected due to changes made to the IPF processor in Baseline B or else are due to known issues with the data processors. The investigation of the known issues are on-going and are due to be resolved with the next update of the Level 2 processors. All common known issues are summarised in the list below, followed by a table highlighting any additional issues which may arise from this test.

Freeboard Error: This Quality Flag is correctly set in all products as this parameter is currently not provided in the L2 products and the Freeboard value is presently set to the default value of -9999.

SARin x-track angle error: Currently there is an on-going investigation into the high number of errors from the 'SARin x-track Error' Quality Flag over Antarctica.

Height error and Backscatter error: It has been noted that the number of errors arising from the 'Backscatter Error' and 'Height Error' Quality Flag is much higher than expected over land areas and this is currently part of an on-going investigation by expert teams.

Number of products with errors: 3

Product	Test Failed	Description
CS_OFFL_SIR_SAR_2A_20130421T035819_20130421T040511_B001	Peakiness error	There is an error in the peakiness derivation
CS_OFFL_SIR_SAR_2A_20130421T211353_20130421T211645_B001	Peakiness error	There is an error in the peakiness derivation
CS_OFFL_SIR_SAR_2A_20130421T213936_20130421T214145_B001	Peakiness error	There is an error in the peakiness derivation

6. QCC Check

The QCC is a CryoSat facility that performs a primary survey of data products immediately after production by the PDS and LTA processing facilities. A list of the tests which raised errors or warnings is provided below.

Nb. There is currently a discrepancy between the number of QCC reports and the number of products reported. This is a known issue and investigation is on-going.

Product type	Nb. Products	Nb. QCC Reports	Nb. Valid	Nb. Warnings	Nb. Errors
SIR_GDR_2A	16	15	0	15	0
SIR_LRM_1B	151	149	111	38	0
SIR_LRM_2	150	149	1	148	0
SIR_SAR_1B	172	171	0	171	0
SIR_SAR_2A	112	112	4	108	0
SIR_SIN_1B	103	103	0	103	0
SIR_SIN_2	98	98	0	98	0

6.1 QCC Errors

Number of products with QCC errors: 0

6.2 Missing QCC Reports

Number of products with missing QCC reports: 15

Product name
CS_OFFL_SIR_GDR_2A_20130420T235504_20130421T013417_B001
CS_OFFL_SIR_LRM_1B_20130420T235135_20130421T000354_B001
CS_OFFL_SIR_LRM_1B_20130421T075259_20130421T080419_B001
CS_OFFL_SIR_LRM_2_20130420T235135_20130421T000354_B001
CS_OFFL_SIR_LRM_2_20130421T101932_20130421T102050_B001
CS_OFFL_SIR_LRM_2_20130421T155933_20130421T160744_B001
CS_OFFL_SIR_LRM_2_20130421T163205_20130421T163447_B001
CS_OFFL_SIR_SAR_1B_20130421T053928_20130421T054047_B001
CS_OFFL_SIR_SAR_2A_20130421T164702_20130421T165342_B001
CS_OFFL_SIR_SAR_2A_20130421T171811_20130421T172339_B001
CS_OFFL_SIR_SAR_2A_20130421T213936_20130421T214145_B001
CS_OFFL_SIR_SAR_2A_20130421T214603_20130421T215102_B001
CS_OFFL_SIR_SIN_2_20130421T213048_20130421T213050_B001
CS_OFFL_SIR_SIN_2_20130421T213217_20130421T213218_B001
CS_OFFL_SIR_SIN_2_20130421T213804_20130421T213815_B001