

## 1. Overview

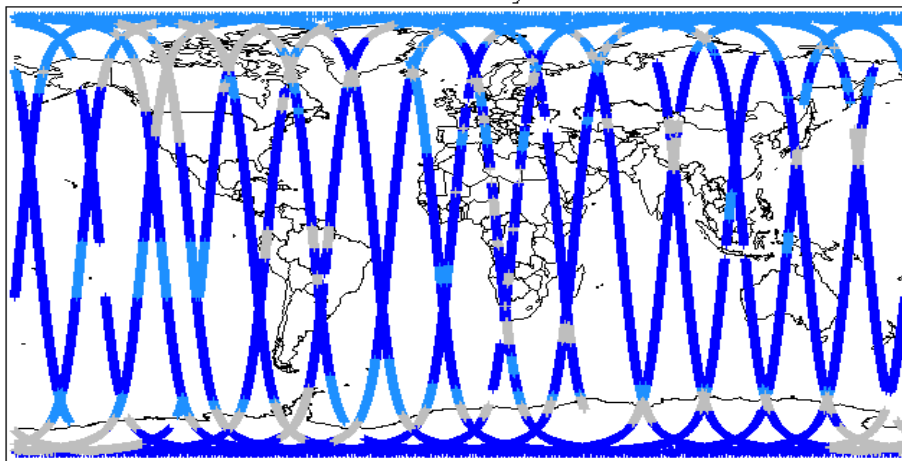
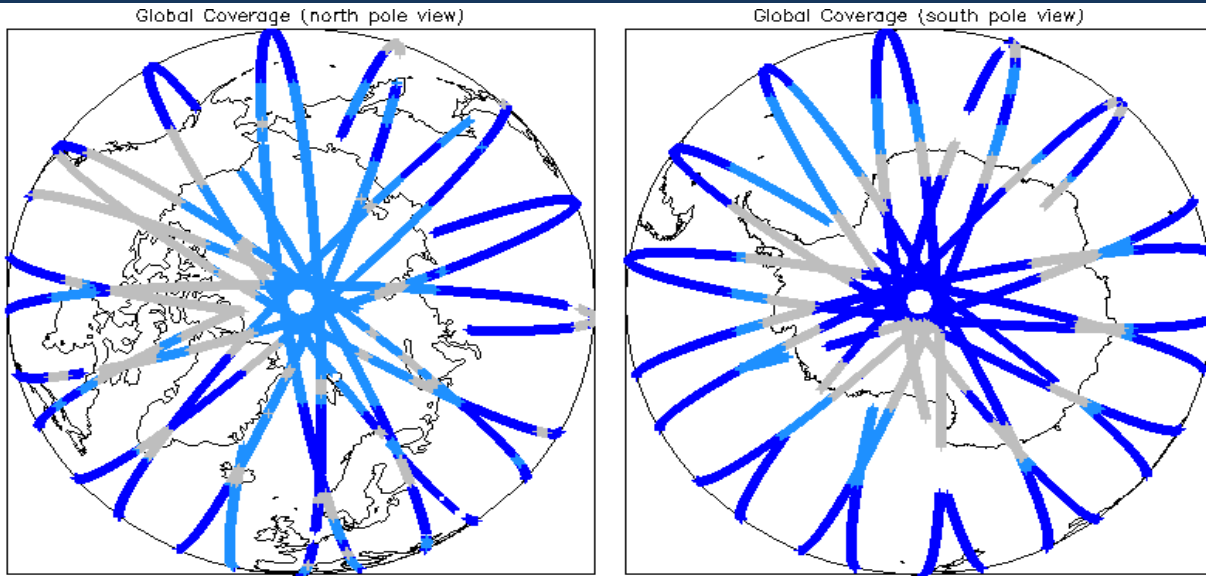
<b>Report Production Date:</b>	07-Jan-2014
<b>Data Used:</b>	OFFLINE L1B and L2 Science Data

Check	Status
Server check: science-pds.cryosat.esa.int	Nominal
Server check: calval-pds.cryosat.esa.int	Nominal
Product Software Check	Nominal
Product Format Check	Nominal
Product Header Analysis	See Section 4.2
Auxiliary Data File Usage	See Section 5.3
Auxiliary Correction Check	See Section 4.4 and 5.4
Measurement Data Set Check	See Section 5.5

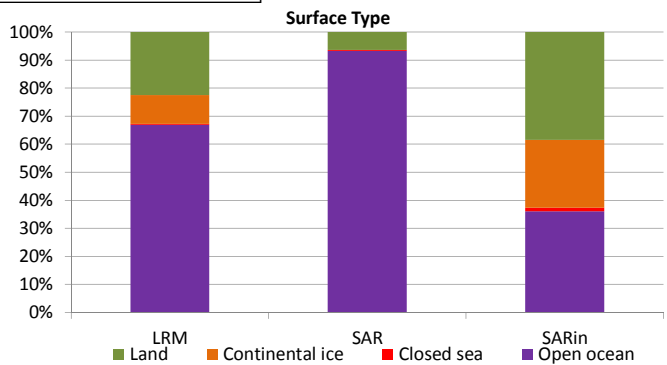
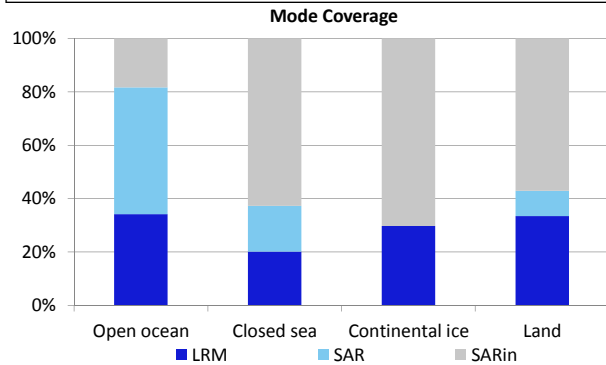
**Mission / Instrument News**

07-May-2012	None
08-May-2012	None
09-May-2012	Nothing planned

## 2. Global Coverage



Mode Coverage (%)		
	LRM	69.49
	SAR	16.95
	SARin	13.38



## 3. Instrument Configuration

The SIRAL instrument configuration for the day of acquisition is provided below.

<b>SIRAL instrument(s) in use:</b>	SIRAL - A
<b>Star Tracker(s) in use:</b>	Star Tracker 1

## 4. Level 1B Data Quality Check

### 4.1 L1B Product Format Check

Each product, retrieved and unpacked from the science server, is checked to ensure it consists of both an XML header file (.HDR) and a product file (.DBL).

Number of products with errors: 0

### 4.2 L1B Product Header Analysis

For all products, a series of pre-defined checks are carried out on the MPH and SPH in order to identify any inconsistencies and/or errors raised by the ground-segment processing chain.

Number of products with errors: 1

Product	Test Failed
CS_OFFL_SIR_SAR_1B_20120508T071958_20120508T071958_B001.DBL	Percentage of processing errors detected greater than minimum acceptable threshold.

### 4.3 L1B Auxiliary Data File Usage Check

Each product is checked for missing Data Set Descriptors wrt a pre-determined baseline and also to check the validity of Auxiliary Data Files is correct.

Number of products with errors: 0

### 4.4 L1B Flagged Auxiliary Correction Error Check

Each product is checked to spot auxiliary corrections flagged by the ground-station processing chain as missing or containing errors

Number of products with errors: 4

Product	Test Failed
CS_OFFL_SIR_LRM_1B_20120507T235324_20120508T000213_B001	Dynamic atmosphere correction error
CS_OFFL_SIR_LRM_1B_20120508T055345_20120508T062447_B001	Dynamic atmosphere correction error
CS_OFFL_SIR_LRM_1B_20120508T114129_20120508T120802_B001	Dynamic atmosphere correction error
CS_OFFL_SIR_LRM_1B_20120508T173746_20120508T180247_B001	Dynamic atmosphere correction error

### 4.5 L1B Measurement Confidence Data Check

CryoSat L1B data includes a measurement confidence flag word (field 14) for each measurement record. The bit value of this flag indicates any problems when set.

Number of products with errors: 0

## 5. Level 2 Data Quality Check

### 5.1 L2 Product Format Check

Each product, retrieved and unpacked from the science server, is checked to ensure it consists of both an XML header file (.HDR) and a product file (.DBL).

Number of products with errors: 0

### 5.2 L2 Product Header Analysis

For all products, a series of pre-defined checks are carried out on the MPH and SPH in order to identify any inconsistencies and/or errors raised by the ground-segment processing chain

Number of products with errors: 0

### 5.3 L2 Auxiliary Data File Usage Check

Each product is checked for missing Data Set Descriptors wrt a pre-determined baseline and also to check the validity of Auxiliary Data Files is correct

Number of products with errors: 2

Product	AUX File	Comment
CS_OFFL_SIR_GDR_2A_20120507T224430_20120508T002344_B001	CS_OPER_AUX_ORBDOR_20120506T215526_20120508T002326_0001	Coverage missing for intervals [2012-05-08T00:23:26, 2012-05-08T00:23:44]
CS_OFFL_SIR_GDR_2A_20120508T233254_20120509T011207_B001	CS_OPER_AUX_ORBDOR_20120507T215526_20120509T002326_0001	Coverage missing for intervals [2012-05-09T00:23:26, 2012-05-09T01:12:07]

### 5.4 L2 Flagged Auxiliary Correction Error Check

Each product is checked to spot auxiliary corrections flagged by the ground-station processing chain as missing or containing errors

Number of products with errors: 4

Product	Test Failed
CS_OFFL_SIR_LRM_2_20120507T235324_20120508T000213_B001	Dynamic atmosphere correction error
CS_OFFL_SIR_LRM_2_20120508T055345_20120508T062447_B001	Dynamic atmosphere correction error
CS_OFFL_SIR_LRM_2_20120508T114129_20120508T120802_B001	Dynamic atmosphere correction error
CS_OFFL_SIR_LRM_2_20120508T173746_20120508T180247_B001	Dynamic atmosphere correction error

## 5.5 L2 Measurement Quality Flag Check

CryoSat L2 data includes a quality flag word (field 43) for each 20-Hz measurement record. The bit value of this flag is an assessment of the measurement quality by the ground-segment processing chains

Presently, there are several common data Quality Flag errors raised by the Level 2 products which are either expected due to changes made to the IPF processor in Baseline B or else are due to known issues with the data processors. The investigation of the known issues are on-going and are due to be resolved with the next update of the Level 2 processors. All common known issues are summarised in the list below, followed by a table highlighting any additional issues which may arise from this test.

**Freeboard Error:** This Quality Flag is correctly set in all products as this parameter is currently not provided in the L2 products and the Freeboard value is presently set to the default value of -9999.

**SARin x-track angle error:** Currently there is an on-going investigation into the high number of errors from the 'SARin x-track Error' Quality Flag over Antarctica.

**Height error and Backscatter error:** It has been noted that the number of errors arising from the 'Backscatter Error' and 'Height Error' Quality Flag is much higher than expected over land areas and this is currently part of an on-going investigation by expert teams.

**Number of products with errors:** 1

Product	Test Failed	Description
CS_OFFL_SIR_SAR_2A_20120508T172811_20120508T173014_B001	Peakiness error	There is an error in the peakiness derivation

## 6. QCC Check

The QCC is a CryoSat facility that performs a primary survey of data products immediately after production by the PDS and LTA processing facilities. A list of the tests which raised errors or warnings is provided below.

Nb. There is currently a discrepancy between the number of QCC reports and the number of products reported. This is a known issue and investigation is on-going.

Product type	Nb. Products	Nb. QCC Reports	Nb. Valid	Nb. Warnings	Nb. Errors
SIR_GDR_2A	17	16	0	16	0
SIR_LRM_1B	124	118	103	15	0
SIR_LRM_2	117	116	0	116	0
SIR_SAR_1B	103	99	0	99	0
SIR_SAR_2A	93	93	4	89	0
SIR_SIN_1B	106	100	0	100	0
SIR_SIN_2	97	97	0	97	0

### 6.1 QCC Errors

**Number of products with QCC errors:** 0

### 6.2 Missing QCC Reports

**Number of products with missing QCC reports:** 18

Product name
CS_OFFL_SIR_GDR_2A_20120507T224430_20120508T002344_B001
CS_OFFL_SIR_LRM_1B_20120507T235324_20120508T000213_B001
CS_OFFL_SIR_LRM_1B_20120508T023425_20120508T023439_B001
CS_OFFL_SIR_LRM_1B_20120508T024313_20120508T024513_B001
CS_OFFL_SIR_LRM_1B_20120508T024656_20120508T025149_B001
CS_OFFL_SIR_LRM_1B_20120508T095054_20120508T095931_B001
CS_OFFL_SIR_LRM_1B_20120508T120805_20120508T121007_B001
CS_OFFL_SIR_LRM_2_20120507T235324_20120508T000213_B001
CS_OFFL_SIR_SAR_1B_20120508T004610_20120508T005052_B001
CS_OFFL_SIR_SAR_1B_20120508T053559_20120508T053607_B001
CS_OFFL_SIR_SAR_1B_20120508T085949_20120508T090000_B001
CS_OFFL_SIR_SAR_1B_20120508T221712_20120508T222108_B001
CS_OFFL_SIR_SIN_1B_20120508T003722_20120508T004311_B001
CS_OFFL_SIR_SIN_1B_20120508T005053_20120508T005105_B001
CS_OFFL_SIR_SIN_1B_20120508T070822_20120508T070903_B001
CS_OFFL_SIR_SIN_1B_20120508T162552_20120508T163002_B001
CS_OFFL_SIR_SIN_1B_20120508T201301_20120508T201516_B001
CS_OFFL_SIR_SIN_1B_20120508T203118_20120508T203417_B001