

### 1. Overview

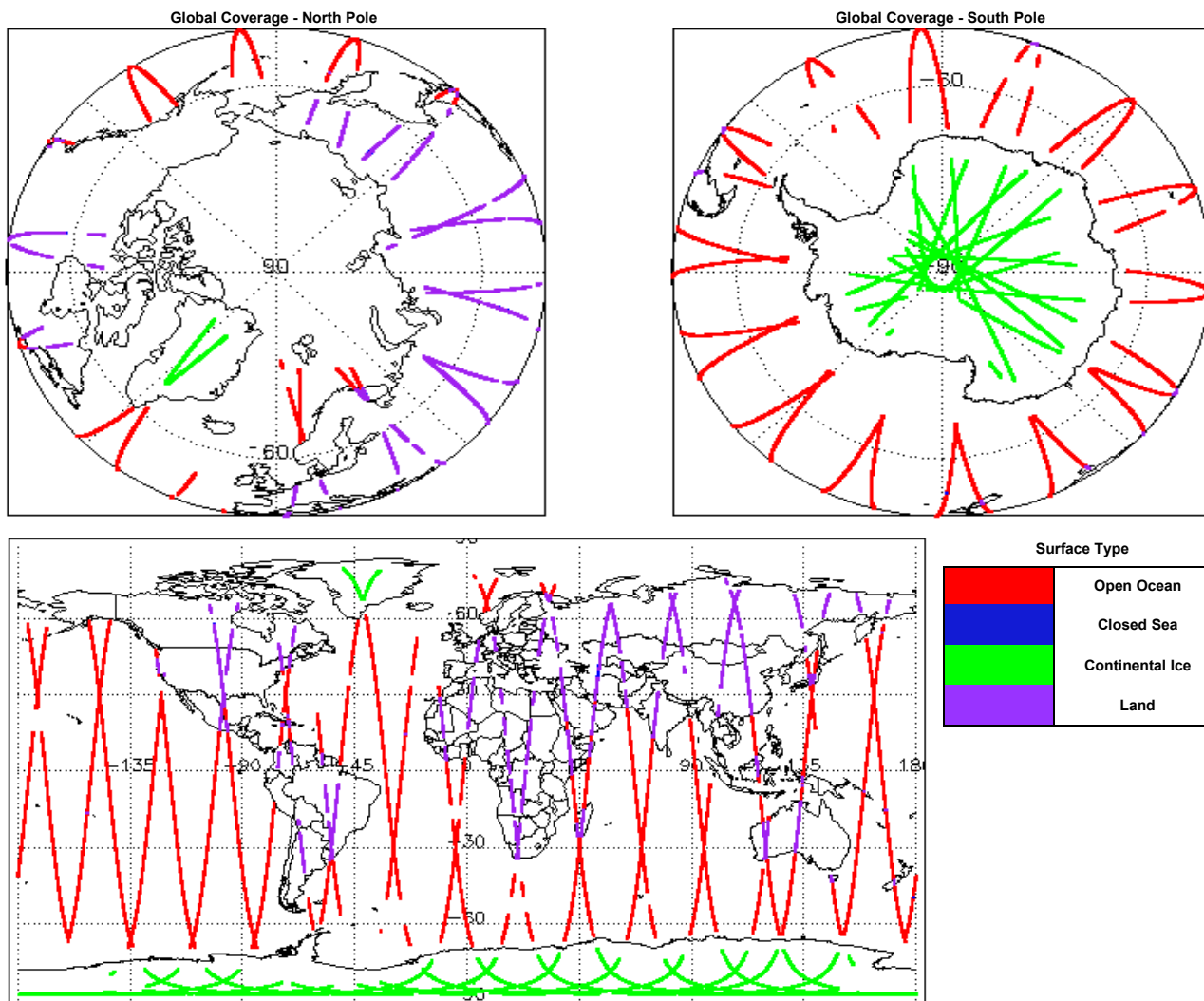
Report Production Date:	05-Feb-2020
Processor Used:	CryoSat Ice Processor
Data Used:	L1 and L2 Fast Delivery Marine (FDM) Mode and L0 Data

Check	Status
Server check: science-pds.cryosat.esa.int	Nominal
Server check: calval-pds.cryosat.esa.int	Nominal
Product Software Check	Nominal
Product Format Check	Nominal
Product Header Analysis	See Section 4.2, 5.2 and 6.2
Star Tracker Usage Check	See Section 5.3
Calibration Usage Check	Nominal
Auxiliary Data File Usage Check	Nominal
Auxiliary Correction Error Check	See Section 6.4
Measurement Confidence Data Check	See Section 5.7, 6.5, 6.6, 6.7 and 6.8

#### Mission / Instrument News

03-Feb-2020	None
04-Feb-2020	None
05-Feb-2020	Nothing planned

### 2. Global Coverage



### 3. Instrument Configuration

The SIRAL instrument configuration for the day of acquisition is provided below.

SIRAL instrument(s) in use:	SIRAL - A
Star Tracker(s) in use:	Star Tracker 1

### 4. Level 0 Data Quality Check

#### 4.1 L0 Product Format Check

Each product, retrieved and unpacked from the science server, is checked to ensure it consists of both an XML header file (.HDR) and a binary product file (.DBL).

Number of products with errors: 0

## 4.2 L0 Product Header Analysis

For all products, a series of pre-defined checks are carried out on the MPH and SPH in order to identify any inconsistencies and/or errors raised by the processing chain.

Number of products with errors: 7

Product	Test Failed
CS_OPER_SIR1SAR_0_20200204T204353_20200204T205044_0001.HDR	Percentage of processing errors detected greater than minimum acceptable threshold.
CS_OPER_SIR1SIN_0_20200204T034107_20200204T034222_0001.HDR	Percentage of processing errors detected greater than minimum acceptable threshold.
CS_OPER_SIR1SIN_0_20200204T055759_20200204T055924_0001.HDR	Percentage of processing errors detected greater than minimum acceptable threshold.
CS_OPER_SIR1SIN_0_20200204T093126_20200204T093218_0001.HDR	Percentage of processing errors detected greater than minimum acceptable threshold.
CS_OPER_SIR2SIN_0_20200204T034107_20200204T034222_0001.HDR	Percentage of processing errors detected greater than minimum acceptable threshold.
CS_OPER_SIR2SIN_0_20200204T052012_20200204T052130_0001.HDR	Percentage of processing errors detected greater than minimum acceptable threshold.
CS_OPER_SIR2SIN_0_20200204T101039_20200204T101314_0001.HDR	Percentage of processing errors detected greater than minimum acceptable threshold.

## 5. Level 1B FDM Data Quality Check

### 5.1 L1B FDM Product Format Check

Each product, retrieved and unpacked from the science server, is checked to ensure it consists of both an XML header file (.HDR) and a binary product file (.DBL).

Number of products with errors: 0

### 5.2 L1B FDM Product Header Analysis

For all products, a series of pre-defined checks are carried out on the MPH and SPH in order to identify any inconsistencies and/or errors raised by the ground-segment processing chain.

Number of products with errors: 9

Product	Test Failed
CS_OFFL_SIR_FDM_1B_20200204T155002_20200204T155323_C001.DBL	FOS Predicted Orbit (MPL_ORBPRES) used instead of the DORIS Navigator Orbit (DOR_NAV).
CS_OFFL_SIR_FDM_1B_20200204T155328_20200204T155330_C001.DBL	FOS Predicted Orbit (MPL_ORBPRES) used instead of the DORIS Navigator Orbit (DOR_NAV).
CS_OFFL_SIR_FDM_1B_20200204T155336_20200204T155518_C001.DBL	FOS Predicted Orbit (MPL_ORBPRES) used instead of the DORIS Navigator Orbit (DOR_NAV).
CS_OFFL_SIR_FDM_1B_20200204T172934_20200204T173030_C001.DBL	FOS Predicted Orbit (MPL_ORBPRES) used instead of the DORIS Navigator Orbit (DOR_NAV).
CS_OFFL_SIR_FDM_1B_20200204T173030_20200204T173044_C001.DBL	FOS Predicted Orbit (MPL_ORBPRES) used instead of the DORIS Navigator Orbit (DOR_NAV).
CS_OFFL_SIR_FDM_1B_20200204T190904_20200204T190928_C001.DBL	FOS Predicted Orbit (MPL_ORBPRES) used instead of the DORIS Navigator Orbit (DOR_NAV).
CS_OFFL_SIR_FDM_1B_20200204T190928_20200204T191001_C001.DBL	FOS Predicted Orbit (MPL_ORBPRES) used instead of the DORIS Navigator Orbit (DOR_NAV).
CS_OFFL_SIR_FDM_1B_20200204T223236_20200204T223445_C001.DBL	FOS Predicted Orbit (MPL_ORBPRES) used instead of the DORIS Navigator Orbit (DOR_NAV).
CS_OFFL_SIR_FDM_1B_20200204T223445_20200204T223604_C001.DBL	FOS Predicted Orbit (MPL_ORBPRES) used instead of the DORIS Navigator Orbit (DOR_NAV).

### 5.3 L1B FDM Star Tracker Usage Check

Each product is checked in order to ensure a valid star tracker file has been used in processing.

Number of products with errors: 3

Product	Test Failed
CS_OFFL_SIR_FDM_1B_20200204T172934_20200204T173030_C001	No Star Tracker file used in the processing of this product
CS_OFFL_SIR_FDM_1B_20200204T190904_20200204T190928_C001	No Star Tracker file used in the processing of this product
CS_OFFL_SIR_FDM_1B_20200204T223236_20200204T223445_C001	No Star Tracker file used in the processing of this product

### 5.4 L1B FDM Calibration Usage Check

Each product is checked in order to ensure the necessary calibration files have been used in processing.

Number of products with errors: 0

### 5.5 L1B FDM Auxiliary Data File Usage Check

Each product is checked for missing Data Set Descriptors with respect to a pre-determined baseline and also to check the validity of Auxiliary Data Files is correct.

Number of products with errors: 0

### 5.6 L1B FDM Auxiliary Correction Error Check

CryoSat L1B data includes a correction error flag (field 54) for each measurement record. The bit value of this flag indicates any problems when set.

Number of products with errors: 0

### 5.7 L1B FDM Measurement Confidence Data Check

CryoSat L1B data includes a measurement confidence flag (field 18) for each measurement record. The bit value of this flag indicates any problems when set.

Number of products with errors: 3

Product	Test Failed	Description
CS_OFFL_SIR_FDM_1B_20200204T172934_20200204T173030_C001	Attitude correction missing	The attitude has not been corrected
CS_OFFL_SIR_FDM_1B_20200204T190904_20200204T190928_C001	Attitude correction missing	The attitude has not been corrected
CS_OFFL_SIR_FDM_1B_20200204T223236_20200204T223445_C001	Attitude correction missing	The attitude has not been corrected

## 6. Level 2 FDM Data Quality Check

### 6.1 L2 FDM Product Format Check

Each product, retrieved and unpacked from the science server, is checked to ensure it consists of both an XML header file (.HDR) and a binary product file (.DBL).

Number of products with errors: 0

## 6.2 L2 FDM Product Header Analysis

For all products, a series of pre-defined checks are carried out on the MPH and SPH in order to identify any inconsistencies and/or errors raised by the ground-segment processing chain.

Number of products with errors: 13

Product	Test Failed
CS_OFFL_SIR_FDM_2_20200204T003310_20200204T003609_C001.DBL	FOS Predicted Orbit (MPL_ORBPRES) used instead of the DORIS Navigator Orbit (DOR_NAV).
CS_OFFL_SIR_FDM_2_20200204T011945_20200204T011958_C001.DBL	FOS Predicted Orbit (MPL_ORBPRES) used instead of the DORIS Navigator Orbit (DOR_NAV).
CS_OFFL_SIR_FDM_2_20200204T155002_20200204T155323_C001.DBL	FOS Predicted Orbit (MPL_ORBPRES) used instead of the DORIS Navigator Orbit (DOR_NAV).
CS_OFFL_SIR_FDM_2_20200204T155328_20200204T155330_C001.DBL	FOS Predicted Orbit (MPL_ORBPRES) used instead of the DORIS Navigator Orbit (DOR_NAV).
CS_OFFL_SIR_FDM_2_20200204T155336_20200204T155518_C001.DBL	FOS Predicted Orbit (MPL_ORBPRES) used instead of the DORIS Navigator Orbit (DOR_NAV).
CS_OFFL_SIR_FDM_2_20200204T172934_20200204T173030_C001.DBL	FOS Predicted Orbit (MPL_ORBPRES) used instead of the DORIS Navigator Orbit (DOR_NAV).
CS_OFFL_SIR_FDM_2_20200204T173030_20200204T173044_C001.DBL	FOS Predicted Orbit (MPL_ORBPRES) used instead of the DORIS Navigator Orbit (DOR_NAV).
CS_OFFL_SIR_FDM_2_20200204T185644_20200204T185747_C001.DBL	FOS Predicted Orbit (MPL_ORBPRES) used instead of the DORIS Navigator Orbit (DOR_NAV).
CS_OFFL_SIR_FDM_2_20200204T190904_20200204T190928_C001.DBL	FOS Predicted Orbit (MPL_ORBPRES) used instead of the DORIS Navigator Orbit (DOR_NAV).
CS_OFFL_SIR_FDM_2_20200204T190928_20200204T191001_C001.DBL	FOS Predicted Orbit (MPL_ORBPRES) used instead of the DORIS Navigator Orbit (DOR_NAV).
CS_OFFL_SIR_FDM_2_20200204T223236_20200204T223445_C001.DBL	FOS Predicted Orbit (MPL_ORBPRES) used instead of the DORIS Navigator Orbit (DOR_NAV).
CS_OFFL_SIR_FDM_2_20200204T223445_20200204T223604_C001.DBL	FOS Predicted Orbit (MPL_ORBPRES) used instead of the DORIS Navigator Orbit (DOR_NAV).
CS_OFFL_SIR_FDM_2_20200204T224635_20200204T224638_C001.DBL	FOS Predicted Orbit (MPL_ORBPRES) used instead of the DORIS Navigator Orbit (DOR_NAV).

## 6.3 L2 FDM Auxiliary Data File Usage Check

Each product is checked for missing Data Set Descriptors with respect to a pre-determined baseline and also to check the validity of Auxiliary Data Files is correct.

Number of products with errors: 0

## 6.4 L2 FDM Auxiliary Correction Error Check

Each product is checked to detect auxiliary corrections flagged by the ground-station processing chain as missing or containing errors.

Number of products with errors: 37

Product	Test Failed	Description
CS_OFFL_SIR_FDM_2_20200203T235635_20200204T000351_C001	Sea State Bias Correction, Altimetric Wind Speed	There is an error with the Altimetric Wind Speed and Sea State Bias Correction for one or more records
CS_OFFL_SIR_FDM_2_20200204T002701_20200204T003012_C001	Sea State Bias Correction, Altimetric Wind Speed	There is an error with the Altimetric Wind Speed and Sea State Bias Correction for one or more records
CS_OFFL_SIR_FDM_2_20200204T005439_20200204T005753_C001	Sea State Bias Correction, Altimetric Wind Speed	There is an error with the Altimetric Wind Speed and Sea State Bias Correction for one or more records
CS_OFFL_SIR_FDM_2_20200204T013458_20200204T015119_C001	Sea State Bias Correction, Altimetric Wind Speed	There is an error with the Altimetric Wind Speed and Sea State Bias Correction for one or more records
CS_OFFL_SIR_FDM_2_20200204T020411_20200204T023913_C001	Sea State Bias Correction, Altimetric Wind Speed	There is an error with the Altimetric Wind Speed and Sea State Bias Correction for one or more records
CS_OFFL_SIR_FDM_2_20200204T034326_20200204T041103_C001	Sea State Bias Correction, Altimetric Wind Speed	There is an error with the Altimetric Wind Speed and Sea State Bias Correction for one or more records
CS_OFFL_SIR_FDM_2_20200204T041345_20200204T041546_C001	Sea State Bias Correction, Altimetric Wind Speed	There is an error with the Altimetric Wind Speed and Sea State Bias Correction for one or more records
CS_OFFL_SIR_FDM_2_20200204T044248_20200204T044903_C001	Sea State Bias Correction, Altimetric Wind Speed	There is an error with the Altimetric Wind Speed and Sea State Bias Correction for one or more records
CS_OFFL_SIR_FDM_2_20200204T044906_20200204T051026_C001	Sea State Bias Correction, Altimetric Wind Speed	There is an error with the Altimetric Wind Speed and Sea State Bias Correction for one or more records
CS_OFFL_SIR_FDM_2_20200204T052245_20200204T055759_C001	Sea State Bias Correction, Altimetric Wind Speed	There is an error with the Altimetric Wind Speed and Sea State Bias Correction for one or more records
CS_OFFL_SIR_FDM_2_20200204T061110_20200204T061246_C001	Sea State Bias Correction, Altimetric Wind Speed	There is an error with the Altimetric Wind Speed and Sea State Bias Correction for one or more records
CS_OFFL_SIR_FDM_2_20200204T080914_20200204T081404_C001	Sea State Bias Correction, Altimetric Wind Speed	There is an error with the Altimetric Wind Speed and Sea State Bias Correction for one or more records
CS_OFFL_SIR_FDM_2_20200204T081551_20200204T082902_C001	Sea State Bias Correction, Altimetric Wind Speed	There is an error with the Altimetric Wind Speed and Sea State Bias Correction for one or more records
CS_OFFL_SIR_FDM_2_20200204T084827_20200204T091426_C001	Sea State Bias Correction, Altimetric Wind Speed	There is an error with the Altimetric Wind Speed and Sea State Bias Correction for one or more records
CS_OFFL_SIR_FDM_2_20200204T094043_20200204T100340_C001	Sea State Bias Correction, Altimetric Wind Speed	There is an error with the Altimetric Wind Speed and Sea State Bias Correction for one or more records
CS_OFFL_SIR_FDM_2_20200204T102142_20200204T102809_C001	Sea State Bias Correction, Altimetric Wind Speed	There is an error with the Altimetric Wind Speed and Sea State Bias Correction for one or more records
CS_OFFL_SIR_FDM_2_20200204T104408_20200204T105131_C001	Sea State Bias Correction, Altimetric Wind Speed	There is an error with the Altimetric Wind Speed and Sea State Bias Correction for one or more records
CS_OFFL_SIR_FDM_2_20200204T120055_20200204T121556_C001	Sea State Bias Correction, Altimetric Wind Speed	There is an error with the Altimetric Wind Speed and Sea State Bias Correction for one or more records
CS_OFFL_SIR_FDM_2_20200204T121735_20200204T123235_C001	Sea State Bias Correction, Altimetric Wind Speed	There is an error with the Altimetric Wind Speed and Sea State Bias Correction for one or more records
CS_OFFL_SIR_FDM_2_20200204T125540_20200204T130139_C001	Sea State Bias Correction, Altimetric Wind Speed	There is an error with the Altimetric Wind Speed and Sea State Bias Correction for one or more records
CS_OFFL_SIR_FDM_2_20200204T130302_20200204T130514_C001	Sea State Bias Correction, Altimetric Wind Speed	There is an error with the Altimetric Wind Speed and Sea State Bias Correction for one or more records
CS_OFFL_SIR_FDM_2_20200204T134037_20200204T140323_C001	Sea State Bias Correction, Altimetric Wind Speed	There is an error with the Altimetric Wind Speed and Sea State Bias Correction for one or more records
CS_OFFL_SIR_FDM_2_20200204T144245_20200204T150640_C001	Sea State Bias Correction, Altimetric Wind Speed	There is an error with the Altimetric Wind Speed and Sea State Bias Correction for one or more records
CS_OFFL_SIR_FDM_2_20200204T152409_20200204T154543_C001	Sea State Bias Correction, Altimetric Wind Speed	There is an error with the Altimetric Wind Speed and Sea State Bias Correction for one or more records
CS_OFFL_SIR_FDM_2_20200204T161811_20200204T164548_C001	Sea State Bias Correction, Altimetric Wind Speed	There is an error with the Altimetric Wind Speed and Sea State Bias Correction for one or more records
CS_OFFL_SIR_FDM_2_20200204T165829_20200204T172729_C001	Sea State Bias Correction, Altimetric Wind Speed	There is an error with the Altimetric Wind Speed and Sea State Bias Correction for one or more records
CS_OFFL_SIR_FDM_2_20200204T173454_20200204T173543_C001	Sea State Bias Correction, Altimetric Wind Speed	There is an error with the Altimetric Wind Speed and Sea State Bias Correction for one or more records
CS_OFFL_SIR_FDM_2_20200204T192940_20200204T193815_C001	Sea State Bias Correction, Altimetric Wind Speed	There is an error with the Altimetric Wind Speed and Sea State Bias Correction for one or more records
CS_OFFL_SIR_FDM_2_20200204T194100_20200204T200341_C001	Sea State Bias Correction	There is an error with the Sea State Bias Correction for one or more records
CS_OFFL_SIR_FDM_2_20200204T203912_20200204T204353_C001	Sea State Bias Correction	There is an error with the Sea State Bias Correction for one or more records
CS_OFFL_SIR_FDM_2_20200204T210835_20200204T214208_C001	Sea State Bias Correction	There is an error with the Sea State Bias Correction for one or more records
CS_OFFL_SIR_FDM_2_20200204T215528_20200204T215715_C001	Sea State Bias Correction, Altimetric Wind Speed	There is an error with the Altimetric Wind Speed and Sea State Bias Correction for one or more records

CS_OFFL_SIR_FDM_2_20200204T220012_20200204T223058_C001	Sea State Bias Correction, Altimetric Wind Speed	There is an error with the Altimetric Wind Speed and Sea State Bias Correction for one or more records
CS_OFFL_SIR_FDM_2_20200204T224556_20200204T224628_C001	Sea State Bias Correction, Altimetric Wind Speed	There is an error with the Altimetric Wind Speed and Sea State Bias Correction for one or more records
CS_OFFL_SIR_FDM_2_20200204T225039_20200204T230514_C001	Sea State Bias Correction, Altimetric Wind Speed	There is an error with the Altimetric Wind Speed and Sea State Bias Correction for one or more records
CS_OFFL_SIR_FDM_2_20200204T230534_20200204T232123_C001	Sea State Bias Correction, Altimetric Wind Speed	There is an error with the Altimetric Wind Speed and Sea State Bias Correction for one or more records
CS_OFFL_SIR_FDM_2_20200204T235406_20200205T000536_C001	Sea State Bias Correction, Altimetric Wind Speed	There is an error with the Altimetric Wind Speed and Sea State Bias Correction for one or more records

## 6.5 L2 FDM Measurement Confidence Data Check

CryoSat L2 data includes a measurement confidence flag (field 8) for each 20-Hz measurement record. The bit value of this flag indicates any problems when set.

**Number of products with errors:** 3

Product	Test Failed	Description
CS_OFFL_SIR_FDM_2_20200204T172934_20200204T173030_C001	Attitude correction missing	The attitude has not been corrected
CS_OFFL_SIR_FDM_2_20200204T190904_20200204T190928_C001	Attitude correction missing	The attitude has not been corrected
CS_OFFL_SIR_FDM_2_20200204T223236_20200204T223445_C001	Attitude correction missing	The attitude has not been corrected

## 6.6 L2 FDM Range Measurement Check

CryoSat L2 data includes a CFI (field 17) and OCOG (field 22) Range Averaging Status flag for each measurement record. The bit value of this flag indicates any problems when set.

**Number of products with errors:** 25

Product	Test Failed	Description
CS_OFFL_SIR_FDM_2_20200203T235635_20200204T000351_C001	CFI Retracked Range Flag	The master fail flag is set by the CFI call, for one or more records, indicating the values stored in fields #13, #14, #15 and #16 should be ignored for these records.
CS_OFFL_SIR_FDM_2_20200204T005439_20200204T005753_C001	CFI Retracked Range Flag	The master fail flag is set by the CFI call, for one or more records, indicating the values stored in fields #13, #14, #15 and #16 should be ignored for these records.
CS_OFFL_SIR_FDM_2_20200204T013458_20200204T015119_C001	CFI Retracked Range Flag	The master fail flag is set by the CFI call, for one or more records, indicating the values stored in fields #13, #14, #15 and #16 should be ignored for these records.
CS_OFFL_SIR_FDM_2_20200204T020411_20200204T023913_C001	CFI Retracked Range Flag	The master fail flag is set by the CFI call, for one or more records, indicating the values stored in fields #13, #14, #15 and #16 should be ignored for these records.
CS_OFFL_SIR_FDM_2_20200204T041345_20200204T041546_C001	CFI Retracked Range Flag	The master fail flag is set by the CFI call, for one or more records, indicating the values stored in fields #13, #14, #15 and #16 should be ignored for these records.
CS_OFFL_SIR_FDM_2_20200204T044248_20200204T044903_C001	CFI Retracked Range Flag	The master fail flag is set by the CFI call, for one or more records, indicating the values stored in fields #13, #14, #15 and #16 should be ignored for these records.
CS_OFFL_SIR_FDM_2_20200204T044906_20200204T051026_C001	CFI Retracked Range Flag	The master fail flag is set by the CFI call, for one or more records, indicating the values stored in fields #13, #14, #15 and #16 should be ignored for these records.
CS_OFFL_SIR_FDM_2_20200204T052245_20200204T055759_C001	CFI Retracked Range Flag	The master fail flag is set by the CFI call, for one or more records, indicating the values stored in fields #13, #14, #15 and #16 should be ignored for these records.
CS_OFFL_SIR_FDM_2_20200204T061110_20200204T061246_C001	CFI Retracked Range Flag	The master fail flag is set by the CFI call, for one or more records, indicating the values stored in fields #13, #14, #15 and #16 should be ignored for these records.
CS_OFFL_SIR_FDM_2_20200204T084827_20200204T091426_C001	CFI Retracked Range Flag	The master fail flag is set by the CFI call, for one or more records, indicating the values stored in fields #13, #14, #15 and #16 should be ignored for these records.
CS_OFFL_SIR_FDM_2_20200204T094043_20200204T100340_C001	CFI Retracked Range Flag	The master fail flag is set by the CFI call, for one or more records, indicating the values stored in fields #13, #14, #15 and #16 should be ignored for these records.
CS_OFFL_SIR_FDM_2_20200204T102142_20200204T102809_C001	CFI Retracked Range Flag	The master fail flag is set by the CFI call, for one or more records, indicating the values stored in fields #13, #14, #15 and #16 should be ignored for these records.
CS_OFFL_SIR_FDM_2_20200204T104408_20200204T105131_C001	CFI Retracked Range Flag	The master fail flag is set by the CFI call, for one or more records, indicating the values stored in fields #13, #14, #15 and #16 should be ignored for these records.
CS_OFFL_SIR_FDM_2_20200204T120055_20200204T121556_C001	CFI Retracked Range Flag	The master fail flag is set by the CFI call, for one or more records, indicating the values stored in fields #13, #14, #15 and #16 should be ignored for these records.
CS_OFFL_SIR_FDM_2_20200204T121735_20200204T123235_C001	CFI Retracked Range Flag	The master fail flag is set by the CFI call, for one or more records, indicating the values stored in fields #13, #14, #15 and #16 should be ignored for these records.
CS_OFFL_SIR_FDM_2_20200204T130302_20200204T130514_C001	CFI Retracked Range Flag	The master fail flag is set by the CFI call, for one or more records, indicating the values stored in fields #13, #14, #15 and #16 should be ignored for these records.
CS_OFFL_SIR_FDM_2_20200204T134037_20200204T140323_C001	CFI Retracked Range Flag	The master fail flag is set by the CFI call, for one or more records, indicating the values stored in fields #13, #14, #15 and #16 should be ignored for these records.
CS_OFFL_SIR_FDM_2_20200204T144245_20200204T150640_C001	CFI Retracked Range Flag	The master fail flag is set by the CFI call, for one or more records, indicating the values stored in fields #13, #14, #15 and #16 should be ignored for these records.
CS_OFFL_SIR_FDM_2_20200204T152409_20200204T154543_C001	CFI Retracked Range Flag	The master fail flag is set by the CFI call, for one or more records, indicating the values stored in fields #13, #14, #15 and #16 should be ignored for these records.
CS_OFFL_SIR_FDM_2_20200204T165829_20200204T172729_C001	CFI Retracked Range Flag	The master fail flag is set by the CFI call, for one or more records, indicating the values stored in fields #13, #14, #15 and #16 should be ignored for these records.
CS_OFFL_SIR_FDM_2_20200204T173454_20200204T173543_C001	CFI Retracked Range Flag	The master fail flag is set by the CFI call, for one or more records, indicating the values stored in fields #13, #14, #15 and #16 should be ignored for these records.
CS_OFFL_SIR_FDM_2_20200204T192940_20200204T193815_C001	CFI Retracked Range Flag	The master fail flag is set by the CFI call, for one or more records, indicating the values stored in fields #13, #14, #15 and #16 should be ignored for these records.
CS_OFFL_SIR_FDM_2_20200204T225039_20200204T230514_C001	CFI Retracked Range Flag	The master fail flag is set by the CFI call, for one or more records, indicating the values stored in fields #13, #14, #15 and #16 should be ignored for these records.
CS_OFFL_SIR_FDM_2_20200204T230534_20200204T232123_C001	CFI Retracked Range Flag	The master fail flag is set by the CFI call, for one or more records, indicating the values stored in fields #13, #14, #15 and #16 should be ignored for these records.
CS_OFFL_SIR_FDM_2_20200204T235406_20200205T000536_C001	CFI Retracked Range Flag	The master fail flag is set by the CFI call, for one or more records, indicating the values stored in fields #13, #14, #15 and #16 should be ignored for these records.





---

### 7.3 Missing QCC Reports

---

Number of products with missing QCC reports: 0

---