

### 1. Overview

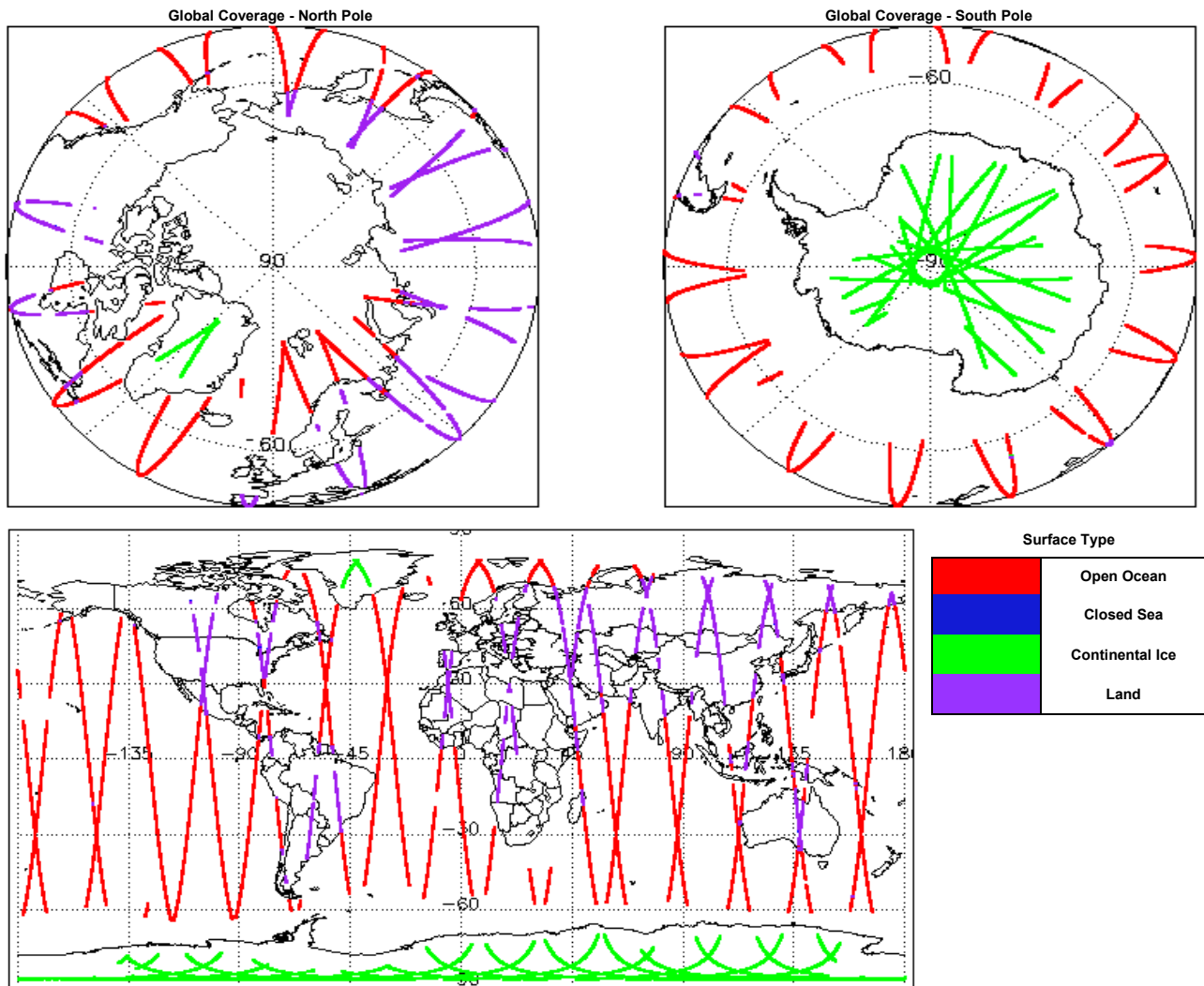
Report Production Date:	04-Sep-2019
Processor Used:	CryoSat Ice Processor
Data Used:	L1 and L2 Fast Delivery Marine (FDM) Mode and L0 Data

Check	Status
Server check: science-pds.cryosat.esa.int	Nominal
Server check: calval-pds.cryosat.esa.int	Nominal
Product Software Check	Nominal
Product Format Check	Nominal
Product Header Analysis	See Section 4.2, 5.2 and 6.2
Star Tracker Usage Check	See Section 5.3
Calibration Usage Check	Nominal
Auxiliary Data File Usage Check	Nominal
Auxiliary Correction Error Check	See Section 6.4
Measurement Confidence Data Check	See Section 5.7, 6.5, 6.6, 6.7 and 6.8

#### Mission / Instrument News

02-Sep-2019	None
03-Sep-2019	None
04-Sep-2019	Nothing planned

### 2. Global Coverage



### 3. Instrument Configuration

The SIRAL instrument configuration for the day of acquisition is provided below.

SIRAL instrument(s) in use:	SIRAL - A
Star Tracker(s) in use:	Star Tracker 1

### 4. Level 0 Data Quality Check

#### 4.1 L0 Product Format Check

Each product, retrieved and unpacked from the science server, is checked to ensure it consists of both an XML header file (.HDR) and a binary product file (.DBL).

Number of products with errors: 0

## 4.2 L0 Product Header Analysis

For all products, a series of pre-defined checks are carried out on the MPH and SPH in order to identify any inconsistencies and/or errors raised by the processing chain.

Number of products with errors: 11

Product	Test Failed
CS_OPER_SIR1SAR_0_20190903T180850_20190903T181552_0001.HDR	Percentage of processing errors detected greater than minimum acceptable threshold.
CS_OPER_SIR1SAR_0_20190903T164621_20190903T164844_0001.HDR	Percentage of processing errors detected greater than minimum acceptable threshold.
CS_OPER_SIR1SIN_0_20190903T191521_20190903T191727_0001.HDR	Percentage of processing errors detected greater than minimum acceptable threshold.
CS_OPER_SIR1SIN_0_20190903T014340_20190903T014707_0001.HDR	Percentage of processing errors detected greater than minimum acceptable threshold.
CS_OPER_SIR1SIN_0_20190903T045950_20190903T050134_0001.HDR	Percentage of processing errors detected greater than minimum acceptable threshold.
CS_OPER_SIR2SIN_0_20190903T110016_20190903T110139_0001.HDR	Percentage of processing errors detected greater than minimum acceptable threshold.
CS_OPER_SIR2SIN_0_20190903T123714_20190903T123749_0001.HDR	Percentage of processing errors detected greater than minimum acceptable threshold.
CS_OPER_SIR2SIN_0_20190903T140237_20190903T140352_0001.HDR	Percentage of processing errors detected greater than minimum acceptable threshold.
CS_OPER_SIR2SIN_0_20190903T163529_20190903T163836_0001.HDR	Percentage of processing errors detected greater than minimum acceptable threshold.
CS_OPER_SIR2SIN_0_20190903T001403_20190903T001527_0001.HDR	Percentage of processing errors detected greater than minimum acceptable threshold.
CS_OPER_SIR2SIN_0_20190903T045950_20190903T050134_0001.HDR	Percentage of processing errors detected greater than minimum acceptable threshold.

## 5. Level 1B FDM Data Quality Check

### 5.1 L1B FDM Product Format Check

Each product, retrieved and unpacked from the science server, is checked to ensure it consists of both an XML header file (.HDR) and a binary product file (.DBL).

Number of products with errors: 0

### 5.2 L1B FDM Product Header Analysis

For all products, a series of pre-defined checks are carried out on the MPH and SPH in order to identify any inconsistencies and/or errors raised by the ground-segment processing chain.

Number of products with errors: 8

Product	Test Failed
CS_OFFL_SIR_FDM_1B_20190903T222108_20190903T222203_C001.DBL	FOS Predicted Orbit (MPL_ORBPRES) used instead of the DORIS Navigator Orbit (DOR_NAV).
CS_OFFL_SIR_FDM_1B_20190903T235459_20190903T235800_C001.DBL	FOS Predicted Orbit (MPL_ORBPRES) used instead of the DORIS Navigator Orbit (DOR_NAV).
CS_OFFL_SIR_FDM_1B_20190903T022549_20190903T022618_C001.DBL	FOS Predicted Orbit (MPL_ORBPRES) used instead of the DORIS Navigator Orbit (DOR_NAV).
CS_OFFL_SIR_FDM_1B_20190903T022618_20190903T022720_C001.DBL	FOS Predicted Orbit (MPL_ORBPRES) used instead of the DORIS Navigator Orbit (DOR_NAV).
CS_OFFL_SIR_FDM_1B_20190903T222203_20190903T222437_C001.DBL	FOS Predicted Orbit (MPL_ORBPRES) used instead of the DORIS Navigator Orbit (DOR_NAV).
CS_OFFL_SIR_FDM_1B_20190903T235800_20190904T000415_C001.DBL	FOS Predicted Orbit (MPL_ORBPRES) used instead of the DORIS Navigator Orbit (DOR_NAV).
CS_OFFL_SIR_FDM_1B_20190903T055014_20190903T055257_C001.DBL	FOS Predicted Orbit (MPL_ORBPRES) used instead of the DORIS Navigator Orbit (DOR_NAV).
CS_OFFL_SIR_FDM_1B_20190903T055002_20190903T055014_C001.DBL	FOS Predicted Orbit (MPL_ORBPRES) used instead of the DORIS Navigator Orbit (DOR_NAV).

### 5.3 L1B FDM Star Tracker Usage Check

Each product is checked in order to ensure a valid star tracker file has been used in processing.

Number of products with errors: 4

Product	Test Failed
CS_OFFL_SIR_FDM_1B_20190903T022549_20190903T022618_C001	No Star Tracker file used in the processing of this product
CS_OFFL_SIR_FDM_1B_20190903T055002_20190903T055014_C001	No Star Tracker file used in the processing of this product
CS_OFFL_SIR_FDM_1B_20190903T222108_20190903T222203_C001	No Star Tracker file used in the processing of this product
CS_OFFL_SIR_FDM_1B_20190903T235459_20190903T235800_C001	No Star Tracker file used in the processing of this product

### 5.4 L1B FDM Calibration Usage Check

Each product is checked in order to ensure the necessary calibration files have been used in processing.

Number of products with errors: 0

### 5.5 L1B FDM Auxiliary Data File Usage Check

Each product is checked for missing Data Set Descriptors with respect to a pre-determined baseline and also to check the validity of Auxiliary Data Files is correct.

Number of products with errors: 0

### 5.6 L1B FDM Auxiliary Correction Error Check

CryoSat L1B data includes a correction error flag (field 54) for each measurement record. The bit value of this flag indicates any problems when set.

Number of products with errors: 0

### 5.7 L1B FDM Measurement Confidence Data Check

CryoSat L1B data includes a measurement confidence flag (field 18) for each measurement record. The bit value of this flag indicates any problems when set.

Number of products with errors: 9

Product	Test Failed	Description
CS_OFFL_SIR_FDM_1B_20190903T020318_20190903T021250_C001	Echo error, TRK echo error	The tracking echo has returned an error and the Rx1 Echo Error flag is set, indicating a degraded echo
CS_OFFL_SIR_FDM_1B_20190903T022549_20190903T022618_C001	Attitude correction missing	The attitude has not been corrected
CS_OFFL_SIR_FDM_1B_20190903T055002_20190903T055014_C001	Attitude correction missing	The attitude has not been corrected
CS_OFFL_SIR_FDM_1B_20190903T074025_20190903T074726_C001	Echo error, TRK echo error	The tracking echo has returned an error and the Rx1 Echo Error flag is set, indicating a degraded echo
CS_OFFL_SIR_FDM_1B_20190903T085723_20190903T090312_C001	Echo error, TRK echo error	The tracking echo has returned an error and the Rx1 Echo Error flag is set, indicating a degraded echo

CS_OFFL_SIR_FDM_1B_20190903T101106_20190903T103401_C001	Echo error, TRK echo error	The tracking echo has returned an error and the Rx1 Echo Error flag is set, indicating a degraded echo
CS_OFFL_SIR_FDM_1B_20190903T171901_20190903T172438_C001	Echo error, TRK echo error	The tracking echo has returned an error and the Rx1 Echo Error flag is set, indicating a degraded echo
CS_OFFL_SIR_FDM_1B_20190903T222108_20190903T222203_C001	Attitude correction missing	The attitude has not been corrected
CS_OFFL_SIR_FDM_1B_20190903T235459_20190903T235800_C001	Attitude correction missing	The attitude has not been corrected

## 6. Level 2 FDM Data Quality Check

### 6.1 L2 FDM Product Format Check

Each product, retrieved and unpacked from the science server, is checked to ensure it consists of both an XML header file (.HDR) and a binary product file (.DBL).

Number of products with errors: 0

### 6.2 L2 FDM Product Header Analysis

For all products, a series of pre-defined checks are carried out on the MPH and SPH in order to identify any inconsistencies and/or errors raised by the ground-segment processing chain.

Number of products with errors: 8

Product	Test Failed
CS_OFFL_SIR_FDM_1B_20190903T222108_20190903T222203_C001.DBL	FOS Predicted Orbit (MPL_ORBPRES) used instead of the DORIS Navigator Orbit (DOR_NAV).
CS_OFFL_SIR_FDM_1B_20190903T235459_20190903T235800_C001.DBL	FOS Predicted Orbit (MPL_ORBPRES) used instead of the DORIS Navigator Orbit (DOR_NAV).
CS_OFFL_SIR_FDM_1B_20190903T022549_20190903T022618_C001.DBL	FOS Predicted Orbit (MPL_ORBPRES) used instead of the DORIS Navigator Orbit (DOR_NAV).
CS_OFFL_SIR_FDM_1B_20190903T022618_20190903T022720_C001.DBL	FOS Predicted Orbit (MPL_ORBPRES) used instead of the DORIS Navigator Orbit (DOR_NAV).
CS_OFFL_SIR_FDM_1B_20190903T222203_20190903T222437_C001.DBL	FOS Predicted Orbit (MPL_ORBPRES) used instead of the DORIS Navigator Orbit (DOR_NAV).
CS_OFFL_SIR_FDM_1B_20190903T235800_20190904T000415_C001.DBL	FOS Predicted Orbit (MPL_ORBPRES) used instead of the DORIS Navigator Orbit (DOR_NAV).
CS_OFFL_SIR_FDM_1B_20190903T055014_20190903T055257_C001.DBL	FOS Predicted Orbit (MPL_ORBPRES) used instead of the DORIS Navigator Orbit (DOR_NAV).
CS_OFFL_SIR_FDM_1B_20190903T055002_20190903T055014_C001.DBL	FOS Predicted Orbit (MPL_ORBPRES) used instead of the DORIS Navigator Orbit (DOR_NAV).

### 6.3 L2 FDM Auxiliary Data File Usage Check

Each product is checked for missing Data Set Descriptors with respect to a pre-determined baseline and also to check the validity of Auxiliary Data Files is correct.

Number of products with errors: 0

### 6.4 L2 FDM Auxiliary Correction Error Check

Each product is checked to detect auxiliary corrections flagged by the ground-station processing chain as missing or containing errors.

Number of products with errors: 43

Product	Test Failed	Description
CS_OFFL_SIR_FDM_2_20190902T233426_20190903T000052_C001	Sea State Bias Correction, Altimetric Wind Speed	There is an error with the Altimetric Wind Speed and Sea State Bias Correction for one or more records
CS_OFFL_SIR_FDM_2_20190903T001725_20190903T004742_C001	Sea State Bias Correction, Altimetric Wind Speed	There is an error with the Altimetric Wind Speed and Sea State Bias Correction for one or more records
CS_OFFL_SIR_FDM_2_20190903T004815_20190903T005510_C001	Sea State Bias Correction, Altimetric Wind Speed	There is an error with the Altimetric Wind Speed and Sea State Bias Correction for one or more records
CS_OFFL_SIR_FDM_2_20190903T010716_20190903T013902_C001	Sea State Bias Correction, Altimetric Wind Speed	There is an error with the Altimetric Wind Speed and Sea State Bias Correction for one or more records
CS_OFFL_SIR_FDM_2_20190903T015641_20190903T020026_C001	Sea State Bias Correction	There is an error with the Sea State Bias Correction for one or more records
CS_OFFL_SIR_FDM_2_20190903T023102_20190903T023108_C001	Sea State Bias Correction, Altimetric Wind Speed	There is an error with the Altimetric Wind Speed and Sea State Bias Correction for one or more records
CS_OFFL_SIR_FDM_2_20190903T024609_20190903T025510_C001	Sea State Bias Correction, Altimetric Wind Speed	There is an error with the Altimetric Wind Speed and Sea State Bias Correction for one or more records
CS_OFFL_SIR_FDM_2_20190903T025754_20190903T031912_C001	Sea State Bias Correction	There is an error with the Sea State Bias Correction for one or more records
CS_OFFL_SIR_FDM_2_20190903T042256_20190903T045757_C001	Sea State Bias Correction, Altimetric Wind Speed	There is an error with the Altimetric Wind Speed and Sea State Bias Correction for one or more records
CS_OFFL_SIR_FDM_2_20190903T051711_20190903T054856_C001	Sea State Bias Correction	There is an error with the Sea State Bias Correction for one or more records
CS_OFFL_SIR_FDM_2_20190903T060125_20190903T061547_C001	Sea State Bias Correction, Altimetric Wind Speed	There is an error with the Altimetric Wind Speed and Sea State Bias Correction for one or more records
CS_OFFL_SIR_FDM_2_20190903T062028_20190903T062240_C001	Sea State Bias Correction, Altimetric Wind Speed	There is an error with the Altimetric Wind Speed and Sea State Bias Correction for one or more records
CS_OFFL_SIR_FDM_2_20190903T062346_20190903T063720_C001	Sea State Bias Correction, Altimetric Wind Speed	There is an error with the Altimetric Wind Speed and Sea State Bias Correction for one or more records
CS_OFFL_SIR_FDM_2_20190903T065526_20190903T070848_C001	Sea State Bias Correction, Altimetric Wind Speed	There is an error with the Altimetric Wind Speed and Sea State Bias Correction for one or more records
CS_OFFL_SIR_FDM_2_20190903T071256_20190903T072820_C001	Sea State Bias Correction, Altimetric Wind Speed	There is an error with the Altimetric Wind Speed and Sea State Bias Correction for one or more records
CS_OFFL_SIR_FDM_2_20190903T075025_20190903T075905_C001	Sea State Bias Correction, Altimetric Wind Speed	There is an error with the Altimetric Wind Speed and Sea State Bias Correction for one or more records
CS_OFFL_SIR_FDM_2_20190903T085011_20190903T085440_C001	Sea State Bias Correction, Altimetric Wind Speed	There is an error with the Altimetric Wind Speed and Sea State Bias Correction for one or more records
CS_OFFL_SIR_FDM_2_20190903T085723_20190903T090312_C001	Sea State Bias Correction, Altimetric Wind Speed	There is an error with the Altimetric Wind Speed and Sea State Bias Correction for one or more records
CS_OFFL_SIR_FDM_2_20190903T090434_20190903T090638_C001	Sea State Bias Correction, Altimetric Wind Speed	There is an error with the Altimetric Wind Speed and Sea State Bias Correction for one or more records
CS_OFFL_SIR_FDM_2_20190903T093421_20190903T095430_C001	Sea State Bias Correction, Altimetric Wind Speed	There is an error with the Altimetric Wind Speed and Sea State Bias Correction for one or more records
CS_OFFL_SIR_FDM_2_20190903T101106_20190903T103401_C001	Sea State Bias Correction	There is an error with the Sea State Bias Correction for one or more records
CS_OFFL_SIR_FDM_2_20190903T105751_20190903T110016_C001	Sea State Bias Correction, Altimetric Wind Speed	There is an error with the Altimetric Wind Speed and Sea State Bias Correction for one or more records
CS_OFFL_SIR_FDM_2_20190903T111030_20190903T113354_C001	Sea State Bias Correction, Altimetric Wind Speed	There is an error with the Altimetric Wind Speed and Sea State Bias Correction for one or more records
CS_OFFL_SIR_FDM_2_20190903T115010_20190903T122237_C001	Sea State Bias Correction, Altimetric Wind Speed	There is an error with the Altimetric Wind Speed and Sea State Bias Correction for one or more records
CS_OFFL_SIR_FDM_2_20190903T133109_20190903T140237_C001	Sea State Bias Correction, Altimetric Wind Speed	There is an error with the Altimetric Wind Speed and Sea State Bias Correction for one or more records
CS_OFFL_SIR_FDM_2_20190903T150937_20190903T153029_C001	Sea State Bias Correction, Altimetric Wind Speed	There is an error with the Altimetric Wind Speed and Sea State Bias Correction for one or more records
CS_OFFL_SIR_FDM_2_20190903T153314_20190903T154440_C001	Sea State Bias Correction, Altimetric Wind Speed	There is an error with the Altimetric Wind Speed and Sea State Bias Correction for one or more records

CS_OFFL_SIR_FDM_2__20190903T155358_20190903T155816_C001	Sea State Bias Correction, Altimetric Wind Speed	There is an error with the Altimetric Wind Speed and Sea State Bias Correction for one or more records
CS_OFFL_SIR_FDM_2__20190903T164844_20190903T171754_C001	Sea State Bias Correction, Altimetric Wind Speed	There is an error with the Altimetric Wind Speed and Sea State Bias Correction for one or more records
CS_OFFL_SIR_FDM_2__20190903T171901_20190903T172438_C001	Sea State Bias Correction, Altimetric Wind Speed	There is an error with the Altimetric Wind Speed and Sea State Bias Correction for one or more records
CS_OFFL_SIR_FDM_2__20190903T173713_20190903T180850_C001	Sea State Bias Correction, Altimetric Wind Speed	There is an error with the Altimetric Wind Speed and Sea State Bias Correction for one or more records
CS_OFFL_SIR_FDM_2__20190903T183137_20190903T185551_C001	Sea State Bias Correction, Altimetric Wind Speed	There is an error with the Altimetric Wind Speed and Sea State Bias Correction for one or more records
CS_OFFL_SIR_FDM_2__20190903T191727_20190903T193327_C001	Sea State Bias Correction, Altimetric Wind Speed	There is an error with the Altimetric Wind Speed and Sea State Bias Correction for one or more records
CS_OFFL_SIR_FDM_2__20190903T200727_20190903T202115_C001	Sea State Bias Correction, Altimetric Wind Speed	There is an error with the Altimetric Wind Speed and Sea State Bias Correction for one or more records
CS_OFFL_SIR_FDM_2__20190903T202254_20190903T202537_C001	Sea State Bias Correction, Altimetric Wind Speed	There is an error with the Altimetric Wind Speed and Sea State Bias Correction for one or more records
CS_OFFL_SIR_FDM_2__20190903T205606_20190903T205821_C001	Sea State Bias Correction	There is an error with the Sea State Bias Correction for one or more records
CS_OFFL_SIR_FDM_2__20190903T205943_20190903T210533_C001	Sea State Bias Correction	There is an error with the Sea State Bias Correction for one or more records
CS_OFFL_SIR_FDM_2__20190903T210816_20190903T213059_C001	Sea State Bias Correction, Altimetric Wind Speed	There is an error with the Altimetric Wind Speed and Sea State Bias Correction for one or more records
CS_OFFL_SIR_FDM_2__20190903T214713_20190903T221044_C001	Sea State Bias Correction, Altimetric Wind Speed	There is an error with the Altimetric Wind Speed and Sea State Bias Correction for one or more records
CS_OFFL_SIR_FDM_2__20190903T222108_20190903T222203_C001	Sea State Bias Correction, Altimetric Wind Speed	There is an error with the Altimetric Wind Speed and Sea State Bias Correction for one or more records
CS_OFFL_SIR_FDM_2__20190903T222203_20190903T222437_C001	Sea State Bias Correction, Altimetric Wind Speed	There is an error with the Altimetric Wind Speed and Sea State Bias Correction for one or more records
CS_OFFL_SIR_FDM_2__20190903T223651_20190903T231027_C001	Sea State Bias Correction, Altimetric Wind Speed	There is an error with the Altimetric Wind Speed and Sea State Bias Correction for one or more records
CS_OFFL_SIR_FDM_2__20190903T232634_20190903T235035_C001	Sea State Bias Correction	There is an error with the Sea State Bias Correction for one or more records

## 6.5 L2 FDM Measurement Confidence Data Check

CryoSat L2 data includes a measurement confidence flag (field 8) for each 20-Hz measurement record. The bit value of this flag indicates any problems when set.

**Number of products with errors:** 8

Product	Test Failed	Description
CS_OFFL_SIR_FDM_2__20190903T022549_20190903T022618_C001	Attitude correction missing	The attitude has not been corrected
CS_OFFL_SIR_FDM_2__20190903T055002_20190903T055014_C001	Attitude correction missing	The attitude has not been corrected
CS_OFFL_SIR_FDM_2__20190903T074025_20190903T074726_C001	Echo error	The Echo Rx1 Error flag is set, indicating a degraded raw echo
CS_OFFL_SIR_FDM_2__20190903T085723_20190903T090312_C001	Echo error	The Echo Rx1 Error flag is set, indicating a degraded raw echo
CS_OFFL_SIR_FDM_2__20190903T101106_20190903T103401_C001	Echo error	The Echo Rx1 Error flag is set, indicating a degraded raw echo
CS_OFFL_SIR_FDM_2__20190903T171901_20190903T172438_C001	Echo error	The Echo Rx1 Error flag is set, indicating a degraded raw echo
CS_OFFL_SIR_FDM_2__20190903T222108_20190903T222203_C001	Attitude correction missing	The attitude has not been corrected
CS_OFFL_SIR_FDM_2__20190903T235459_20190903T235800_C001	Attitude correction missing	The attitude has not been corrected

## 6.6 L2 FDM Range Measurement Check

CryoSat L2 data includes a CFI (field 17) and OCOG (field 22) Range Averaging Status flag for each measurement record. The bit value of this flag indicates any problems when set.

**Number of products with errors:** 31

Product	Test Failed	Description
CS_OFFL_SIR_FDM_2__20190903T001725_20190903T004742_C001	CFI Retracked Range Flag	The master fail flag is set by the CFI call, for one or more records, indicating the values stored in fields #13, #14, #15 and #16 should be ignored for these records.
CS_OFFL_SIR_FDM_2__20190903T004815_20190903T005510_C001	CFI Retracked Range Flag	The master fail flag is set by the CFI call, for one or more records, indicating the values stored in fields #13, #14, #15 and #16 should be ignored for these records.
CS_OFFL_SIR_FDM_2__20190903T010716_20190903T013902_C001	CFI Retracked Range Flag	The master fail flag is set by the CFI call, for one or more records, indicating the values stored in fields #13, #14, #15 and #16 should be ignored for these records.
CS_OFFL_SIR_FDM_2__20190903T024609_20190903T025510_C001	CFI Retracked Range Flag	The master fail flag is set by the CFI call, for one or more records, indicating the values stored in fields #13, #14, #15 and #16 should be ignored for these records.
CS_OFFL_SIR_FDM_2__20190903T042256_20190903T045757_C001	CFI Retracked Range Flag	The master fail flag is set by the CFI call, for one or more records, indicating the values stored in fields #13, #14, #15 and #16 should be ignored for these records.
CS_OFFL_SIR_FDM_2__20190903T062028_20190903T062240_C001	CFI Retracked Range Flag	The master fail flag is set by the CFI call, for one or more records, indicating the values stored in fields #13, #14, #15 and #16 should be ignored for these records.
CS_OFFL_SIR_FDM_2__20190903T062346_20190903T063720_C001	CFI Retracked Range Flag	The master fail flag is set by the CFI call, for one or more records, indicating the values stored in fields #13, #14, #15 and #16 should be ignored for these records.
CS_OFFL_SIR_FDM_2__20190903T065526_20190903T070848_C001	CFI Retracked Range Flag	The master fail flag is set by the CFI call, for one or more records, indicating the values stored in fields #13, #14, #15 and #16 should be ignored for these records.
CS_OFFL_SIR_FDM_2__20190903T071256_20190903T072820_C001	CFI Retracked Range Flag	The master fail flag is set by the CFI call, for one or more records, indicating the values stored in fields #13, #14, #15 and #16 should be ignored for these records.
CS_OFFL_SIR_FDM_2__20190903T075025_20190903T075905_C001	CFI Retracked Range Flag	The master fail flag is set by the CFI call, for one or more records, indicating the values stored in fields #13, #14, #15 and #16 should be ignored for these records.
CS_OFFL_SIR_FDM_2__20190903T085011_20190903T085440_C001	CFI Retracked Range Flag	The master fail flag is set by the CFI call, for one or more records, indicating the values stored in fields #13, #14, #15 and #16 should be ignored for these records.
CS_OFFL_SIR_FDM_2__20190903T085723_20190903T090312_C001	CFI Retracked Range Flag	The master fail flag is set by the CFI call, for one or more records, indicating the values stored in fields #13, #14, #15 and #16 should be ignored for these records.
CS_OFFL_SIR_FDM_2__20190903T090434_20190903T090638_C001	CFI Retracked Range Flag	The master fail flag is set by the CFI call, for one or more records, indicating the values stored in fields #13, #14, #15 and #16 should be ignored for these records.
CS_OFFL_SIR_FDM_2__20190903T093421_20190903T095430_C001	CFI Retracked Range Flag	The master fail flag is set by the CFI call, for one or more records, indicating the values stored in fields #13, #14, #15 and #16 should be ignored for these records.
CS_OFFL_SIR_FDM_2__20190903T105751_20190903T110016_C001	CFI Retracked Range Flag	The master fail flag is set by the CFI call, for one or more records, indicating the values stored in fields #13, #14, #15 and #16 should be ignored for these records.







CS_OFFL_SIR_FDM_2_20190903T150937_20190903T153029_C001	Ocean Retracking Quality Flag	The Ocean Retracking Quality Flag is set indicating the CFI Ocean Retracker was not successfully executed for one or more records.
CS_OFFL_SIR_FDM_2_20190903T153314_20190903T154440_C001	Ocean Retracking Quality Flag	The Ocean Retracking Quality Flag is set indicating the CFI Ocean Retracker was not successfully executed for one or more records.
CS_OFFL_SIR_FDM_2_20190903T161316_20190903T161919_C001	Ocean Retracking Quality Flag	The Ocean Retracking Quality Flag is set indicating the CFI Ocean Retracker was not successfully executed for one or more records.
CS_OFFL_SIR_FDM_2_20190903T164844_20190903T171754_C001	Ocean Retracking Quality Flag	The Ocean Retracking Quality Flag is set indicating the CFI Ocean Retracker was not successfully executed for one or more records.
CS_OFFL_SIR_FDM_2_20190903T171901_20190903T172438_C001	Ocean Retracking Quality Flag	The Ocean Retracking Quality Flag is set indicating the CFI Ocean Retracker was not successfully executed for one or more records.
CS_OFFL_SIR_FDM_2_20190903T173617_20190903T173655_C001	Ocean Retracking Quality Flag	The Ocean Retracking Quality Flag is set indicating the CFI Ocean Retracker was not successfully executed for one or more records.
CS_OFFL_SIR_FDM_2_20190903T173713_20190903T180850_C001	Ocean Retracking Quality Flag	The Ocean Retracking Quality Flag is set indicating the CFI Ocean Retracker was not successfully executed for one or more records.
CS_OFFL_SIR_FDM_2_20190903T183137_20190903T185551_C001	Ocean Retracking Quality Flag	The Ocean Retracking Quality Flag is set indicating the CFI Ocean Retracker was not successfully executed for one or more records.
CS_OFFL_SIR_FDM_2_20190903T191727_20190903T193327_C001	Ocean Retracking Quality Flag	The Ocean Retracking Quality Flag is set indicating the CFI Ocean Retracker was not successfully executed for one or more records.
CS_OFFL_SIR_FDM_2_20190903T200727_20190903T202115_C001	Ocean Retracking Quality Flag	The Ocean Retracking Quality Flag is set indicating the CFI Ocean Retracker was not successfully executed for one or more records.
CS_OFFL_SIR_FDM_2_20190903T202254_20190903T202537_C001	Ocean Retracking Quality Flag	The Ocean Retracking Quality Flag is set indicating the CFI Ocean Retracker was not successfully executed for one or more records.
CS_OFFL_SIR_FDM_2_20190903T205943_20190903T210533_C001	Ocean Retracking Quality Flag	The Ocean Retracking Quality Flag is set indicating the CFI Ocean Retracker was not successfully executed for one or more records.
CS_OFFL_SIR_FDM_2_20190903T210816_20190903T213059_C001	Ocean Retracking Quality Flag	The Ocean Retracking Quality Flag is set indicating the CFI Ocean Retracker was not successfully executed for one or more records.
CS_OFFL_SIR_FDM_2_20190903T214713_20190903T221044_C001	Ocean Retracking Quality Flag	The Ocean Retracking Quality Flag is set indicating the CFI Ocean Retracker was not successfully executed for one or more records.
CS_OFFL_SIR_FDM_2_20190903T222108_20190903T222203_C001	Ocean Retracking Quality Flag	The Ocean Retracking Quality Flag is set indicating the CFI Ocean Retracker was not successfully executed for one or more records.
CS_OFFL_SIR_FDM_2_20190903T222203_20190903T222437_C001	Ocean Retracking Quality Flag	The Ocean Retracking Quality Flag is set indicating the CFI Ocean Retracker was not successfully executed for one or more records.
CS_OFFL_SIR_FDM_2_20190903T223651_20190903T231027_C001	Ocean Retracking Quality Flag	The Ocean Retracking Quality Flag is set indicating the CFI Ocean Retracker was not successfully executed for one or more records.
CS_OFFL_SIR_FDM_2_20190903T232634_20190903T235035_C001	Ocean Retracking Quality Flag	The Ocean Retracking Quality Flag is set indicating the CFI Ocean Retracker was not successfully executed for one or more records.

## 7. QCC Report Analysis

The Quality Control for CryoSat (QCC) facility performs a primary survey of data products immediately after production by the PDS and LTA processing facilities. A list of the tests which raised errors or warnings is provided below.

Product type	Nb. Products	Nb. QCC Reports	Nb. Valid	Nb. Warnings	Nb. Errors
SIR1LRM_0_	146	146	146	0	0
SIR1SAR_0_	143	96	96	0	0
SIR1SIN_0_	104	104	104	0	0
SIR_FDM_1B	146	143	146	0	0
SIR_FDM_2	143	143	143	0	0

### 7.1 QCC Errors

Number of QCC reports with errors: 0

### 7.2 QCC Warnings

Number of QCC reports with warnings: 0

### 7.3 Missing QCC Reports

Number of products with missing QCC reports: 111