

**1. Overview**

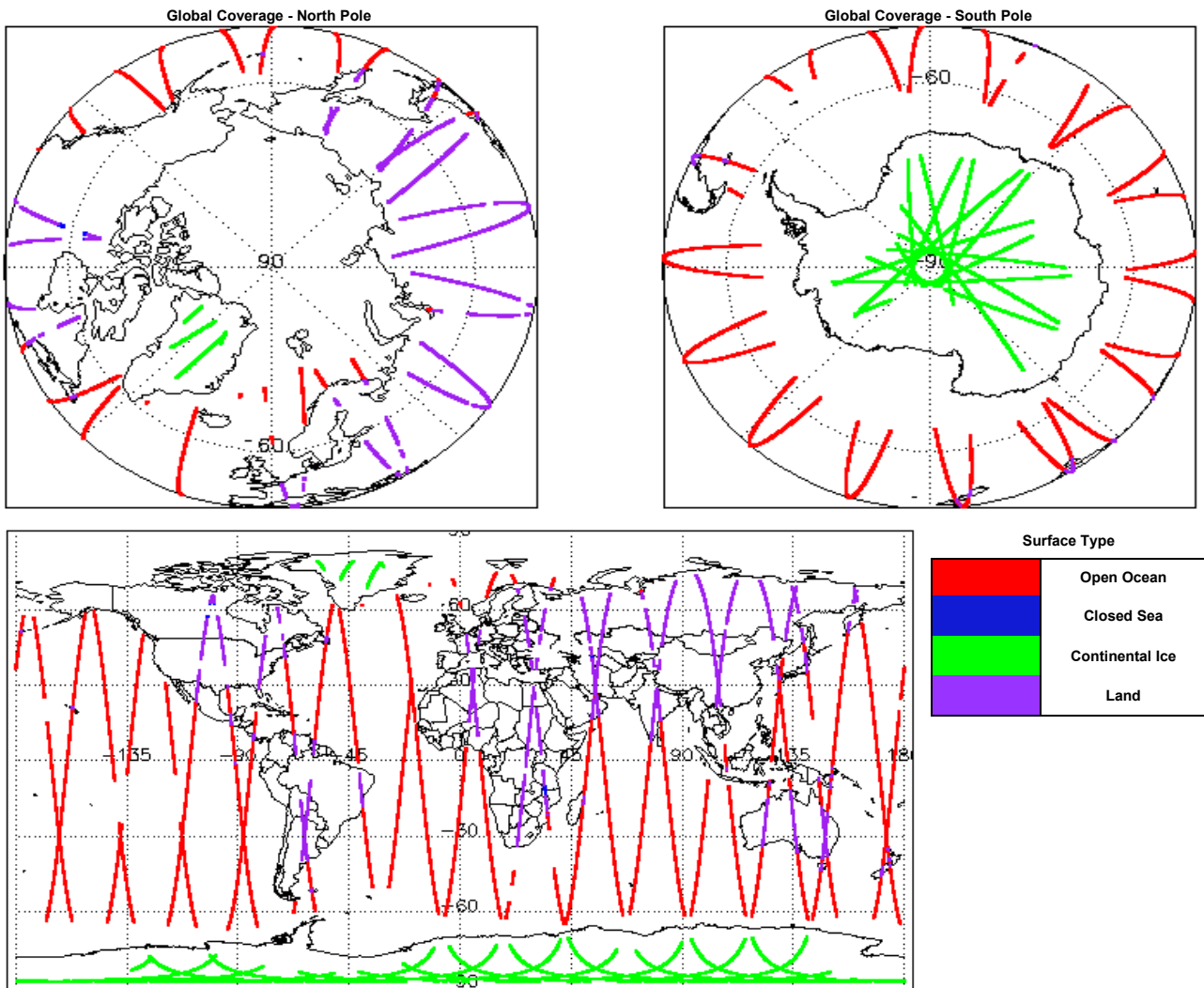
<b>Report Production Date:</b>	20-May-2019
<b>Processor Used:</b>	CryoSat Ice Processor
<b>Data Used:</b>	L1 and L2 Fast Delivery Marine (FDM) Mode and L0 Data

Check	Status
Server check: science-pds.cryosat.esa.int	Nominal
Server check: calval-pds.cryosat.esa.int	Nominal
Product Software Check	Nominal
Product Format Check	Nominal
Product Header Analysis	See Section 4.2
Star Tracker Usage Check	See Section 5.3
Calibration Usage Check	Nominal
Auxiliary Data File Usage Check	See Section 5.5 and 6.3
Auxiliary Correction Error Check	See Section 5.6 and 6.4
Measurement Confidence Data Check	See Section 5.7, 6.5, 6.6, 6.7 and 6.8

**Mission / Instrument News**

16-May-2019	None
17-May-2019	None
18-May-2019	Nothing planned

**2. Global Coverage**



**3. Instrument Configuration**

The SIRAL instrument configuration for the day of acquisition is provided below.

<b>SIRAL instrument(s) in use:</b>	SIRAL - A
<b>Star Tracker(s) in use:</b>	Star Tracker 1

**4. Level 0 Data Quality Check**

**4.1 L0 Product Format Check**

Each product, retrieved and unpacked from the science server, is checked to ensure it consists of both an XML header file (.HDR) and a binary product file (.DBL).

Number of products with errors: 0

## 4.2 L0 Product Header Analysis

For all products, a series of pre-defined checks are carried out on the MPH and SPH in order to identify any inconsistencies and/or errors raised by the processing chain.

Number of products with errors: 6

Product	Test Failed
CS_OPER_SIR1SAR_0_20190517T220237_20190517T220510_0001.HDR	Percentage of processing errors detected greater than minimum acceptable threshold.
CS_OPER_SIR1SAR_0_20190517T164305_20190517T164836_0001.HDR	Percentage of processing errors detected greater than minimum acceptable threshold.
CS_OPER_SIR1SAR_0_20190517T202403_20190517T203546_0001.HDR	Percentage of processing errors detected greater than minimum acceptable threshold.
CS_OPER_SIR1SIN_0_20190517T134953_20190517T135422_0001.HDR	Percentage of processing errors detected greater than minimum acceptable threshold.
CS_OPER_SIR2SIN_0_20190517T065332_20190517T065528_0001.HDR	Percentage of processing errors detected greater than minimum acceptable threshold.
CS_OPER_SIR2SIN_0_20190517T132713_20190517T133222_0001.HDR	Percentage of processing errors detected greater than minimum acceptable threshold.

## 5. Level 1B FDM Data Quality Check

### 5.1 L1B FDM Product Format Check

Each product, retrieved and unpacked from the science server, is checked to ensure it consists of both an XML header file (.HDR) and a binary product file (.DBL).

Number of products with errors: 0

### 5.2 L1B FDM Product Header Analysis

For all products, a series of pre-defined checks are carried out on the MPH and SPH in order to identify any inconsistencies and/or errors raised by the ground-segment processing chain.

Number of products with errors: 0

### 5.3 L1B FDM Star Tracker Usage Check

Each product is checked in order to ensure a valid star tracker file has been used in processing.

Number of products with errors: 4

Product	Test Failed
CS_OFFL_SIR_FDM_1B_20190517T035405_20190517T035446_C001	No Star Tracker file used in the processing of this product
CS_OFFL_SIR_FDM_1B_20190517T052825_20190517T053047_C001	No Star Tracker file used in the processing of this product
CS_OFFL_SIR_FDM_1B_20190517T070709_20190517T070828_C001	No Star Tracker file used in the processing of this product
CS_OFFL_SIR_FDM_1B_20190517T101725_20190517T103015_C001	No Star Tracker file used in the processing of this product

### 5.4 L1B FDM Calibration Usage Check

Each product is checked in order to ensure the necessary calibration files have been used in processing.

Number of products with errors: 0

### 5.5 L1B FDM Auxiliary Data File Usage Check

Each product is checked for missing Data Set Descriptors with respect to a pre-determined baseline and also to check the validity of Auxiliary Data Files is correct.

Number of products with errors: 9

Product	AUX File	Comment
CS_OFFL_SIR_FDM_1B_20190517T085050_20190517T085113_C001	Geocentr. polar tide	There is an error with the Geocentric Polar Tide Correction for one or more records
CS_OFFL_SIR_FDM_1B_20190517T085310_20190517T085346_C001	Geocentr. polar tide	There is an error with the Geocentric Polar Tide Correction for one or more records
CS_OFFL_SIR_FDM_1B_20190517T090732_20190517T091630_C001	Geocentr. polar tide	There is an error with the Geocentric Polar Tide Correction for one or more records
CS_OFFL_SIR_FDM_1B_20190517T091759_20190517T093508_C001	Geocentr. polar tide	There is an error with the Geocentric Polar Tide Correction for one or more records
CS_OFFL_SIR_FDM_1B_20190517T093518_20190517T094038_C001	Geocentr. polar tide	There is an error with the Geocentric Polar Tide Correction for one or more records
CS_OFFL_SIR_FDM_1B_20190517T094638_20190517T094821_C001	Geocentr. polar tide	There is an error with the Geocentric Polar Tide Correction for one or more records
CS_OFFL_SIR_FDM_1B_20190517T094828_20190517T095240_C001	Geocentr. polar tide	There is an error with the Geocentric Polar Tide Correction for one or more records
CS_OFFL_SIR_FDM_1B_20190517T095615_20190517T101653_C001	Geocentr. polar tide	There is an error with the Geocentric Polar Tide Correction for one or more records
CS_OFFL_SIR_FDM_1B_20190517T101725_20190517T103015_C001	Geocentr. polar tide	There is an error with the Geocentric Polar Tide Correction for one or more records

### 5.6 L1B FDM Auxiliary Correction Error Check

CryoSat L1B data includes a correction error flag (field 54) for each measurement record. The bit value of this flag indicates any problems when set.

Number of products with errors: 9

Product	Test Failed	Description
CS_OFFL_SIR_FDM_1B_20190517T085050_20190517T085113_C001	Geocentr. Polar tide	There is an error with the Geocentric Polar Tide Correction for one or more records
CS_OFFL_SIR_FDM_1B_20190517T085310_20190517T085346_C001	Geocentr. Polar tide	There is an error with the Geocentric Polar Tide Correction for one or more records
CS_OFFL_SIR_FDM_1B_20190517T090732_20190517T091630_C001	Geocentr. Polar tide	There is an error with the Geocentric Polar Tide Correction for one or more records

CS_OFFL_SIR_FDM_1B_20190517T091759_20190517T093508_C001	Geocentr. Polar tide	There is an error with the Geocentric Polar Tide Correction for one or more records
CS_OFFL_SIR_FDM_1B_20190517T093518_20190517T094038_C001	Geocentr. Polar tide	There is an error with the Geocentric Polar Tide Correction for one or more records
CS_OFFL_SIR_FDM_1B_20190517T094638_20190517T094821_C001	Geocentr. Polar tide	There is an error with the Geocentric Polar Tide Correction for one or more records
CS_OFFL_SIR_FDM_1B_20190517T094828_20190517T095240_C001	Geocentr. Polar tide	There is an error with the Geocentric Polar Tide Correction for one or more records
CS_OFFL_SIR_FDM_1B_20190517T095615_20190517T101653_C001	Geocentr. Polar tide	There is an error with the Geocentric Polar Tide Correction for one or more records
CS_OFFL_SIR_FDM_1B_20190517T101725_20190517T103015_C001	Geocentr. Polar tide	There is an error with the Geocentric Polar Tide Correction for one or more records

## 5.7 L1B FDM Measurement Confidence Data Check

CryoSat L1B data includes a measurement confidence flag (field 18) for each measurement record. The bit value of this flag indicates any problems when set.

Number of products with errors: 4

Product	Test Failed	Description
CS_OFFL_SIR_FDM_1B_20190517T035405_20190517T035446_C001	Attitude correction missing	The attitude has not been corrected
CS_OFFL_SIR_FDM_1B_20190517T052825_20190517T053047_C001	Attitude correction missing	The attitude has not been corrected
CS_OFFL_SIR_FDM_1B_20190517T070709_20190517T070828_C001	Attitude correction missing	The attitude has not been corrected
CS_OFFL_SIR_FDM_1B_20190517T101725_20190517T103015_C001	Attitude correction missing	The attitude has not been corrected

## 6. Level 2 FDM Data Quality Check

### 6.1 L2 FDM Product Format Check

Each product, retrieved and unpacked from the science server, is checked to ensure it consists of both an XML header file (.HDR) and a binary product file (.DBL).

Number of products with errors: 0

### 6.2 L2 FDM Product Header Analysis

For all products, a series of pre-defined checks are carried out on the MPH and SPH in order to identify any inconsistencies and/or errors raised by the ground-segment processing chain.

Number of products with errors: 0

### 6.3 L2 FDM Auxiliary Data File Usage Check

Each product is checked for missing Data Set Descriptors with respect to a pre-determined baseline and also to check the validity of Auxiliary Data Files is correct.

Number of products with errors: 9

Product	AUX File	Comment
CS_OFFL_SIR_FDM_2_20190517T085050_20190517T085113_C001	Geocentr. Polar tide	There is an error with the Geocentric Polar Tide Correction for one or more records
CS_OFFL_SIR_FDM_2_20190517T085310_20190517T085346_C001	Geocentr. Polar tide	There is an error with the Geocentric Polar Tide Correction for one or more records
CS_OFFL_SIR_FDM_2_20190517T090732_20190517T091630_C001	Geocentr. Polar tide	There is an error with the Geocentric Polar Tide Correction for one or more records
CS_OFFL_SIR_FDM_2_20190517T091759_20190517T093508_C001	Geocentr. Polar tide	There is an error with the Geocentric Polar Tide Correction for one or more records
CS_OFFL_SIR_FDM_2_20190517T093518_20190517T094038_C001	Geocentr. Polar tide	There is an error with the Geocentric Polar Tide Correction for one or more records
CS_OFFL_SIR_FDM_2_20190517T094638_20190517T094821_C001	Geocentr. Polar tide	There is an error with the Geocentric Polar Tide Correction for one or more records
CS_OFFL_SIR_FDM_2_20190517T094828_20190517T095240_C001	Geocentr. Polar tide	There is an error with the Geocentric Polar Tide Correction for one or more records
CS_OFFL_SIR_FDM_2_20190517T095615_20190517T101653_C001	Geocentr. Polar tide	There is an error with the Geocentric Polar Tide Correction for one or more records
CS_OFFL_SIR_FDM_2_20190517T101725_20190517T103015_C001	Geocentr. Polar tide	There is an error with the Geocentric Polar Tide Correction for one or more records

### 6.4 L2 FDM Auxiliary Correction Error Check

Each product is checked to detect auxiliary corrections flagged by the ground-station processing chain as missing or containing errors.

Number of products with errors: 44

Product	Test Failed	Description
CS_OFFL_SIR_FDM_2_20190517T000017_20190517T001545_C001	Sea State Bias Correction, Altimetric Wind Speed	There is an error with the Altimetric Wind Speed and Sea State Bias Correction for one or more records
CS_OFFL_SIR_FDM_2_20190517T001749_20190517T002808_C001	Sea State Bias Correction, Altimetric Wind Speed	There is an error with the Altimetric Wind Speed and Sea State Bias Correction for one or more records
CS_OFFL_SIR_FDM_2_20190517T005007_20190517T005216_C001	Sea State Bias Correction, Altimetric Wind Speed	There is an error with the Altimetric Wind Speed and Sea State Bias Correction for one or more records
CS_OFFL_SIR_FDM_2_20190517T005230_20190517T010624_C001	Sea State Bias Correction, Altimetric Wind Speed	There is an error with the Altimetric Wind Speed and Sea State Bias Correction for one or more records
CS_OFFL_SIR_FDM_2_20190517T013956_20190517T015411_C001	Sea State Bias Correction, Altimetric Wind Speed	There is an error with the Altimetric Wind Speed and Sea State Bias Correction for one or more records
CS_OFFL_SIR_FDM_2_20190517T015551_20190517T015834_C001	Sea State Bias Correction, Altimetric Wind Speed	There is an error with the Altimetric Wind Speed and Sea State Bias Correction for one or more records
CS_OFFL_SIR_FDM_2_20190517T023247_20190517T023830_C001	Sea State Bias Correction, Altimetric Wind Speed	There is an error with the Altimetric Wind Speed and Sea State Bias Correction for one or more records

CS_OFFL_SIR_FDM_2_20190517T024114_20190517T024345_C001	Sea State Bias Correction, Altimetric Wind Speed	There is an error with the Altimetric Wind Speed and Sea State Bias Correction for one or more records
CS_OFFL_SIR_FDM_2_20190517T024349_20190517T030452_C001	Sea State Bias Correction, Altimetric Wind Speed	There is an error with the Altimetric Wind Speed and Sea State Bias Correction for one or more records
CS_OFFL_SIR_FDM_2_20190517T035405_20190517T035446_C001	Sea State Bias Correction	There is an error with the Sea State Bias Correction for one or more records
CS_OFFL_SIR_FDM_2_20190517T045825_20190517T052417_C001	Sea State Bias Correction, Altimetric Wind Speed	There is an error with the Altimetric Wind Speed and Sea State Bias Correction for one or more records
CS_OFFL_SIR_FDM_2_20190517T063644_20190517T064247_C001	Sea State Bias Correction, Altimetric Wind Speed	There is an error with the Altimetric Wind Speed and Sea State Bias Correction for one or more records
CS_OFFL_SIR_FDM_2_20190517T064712_20190517T065332_C001	Sea State Bias Correction, Altimetric Wind Speed	There is an error with the Altimetric Wind Speed and Sea State Bias Correction for one or more records
CS_OFFL_SIR_FDM_2_20190517T072758_20190517T080140_C001	Sea State Bias Correction, Altimetric Wind Speed	There is an error with the Altimetric Wind Speed and Sea State Bias Correction for one or more records
CS_OFFL_SIR_FDM_2_20190517T081633_20190517T081823_C001	Sea State Bias Correction, Altimetric Wind Speed	There is an error with the Altimetric Wind Speed and Sea State Bias Correction for one or more records
CS_OFFL_SIR_FDM_2_20190517T081843_20190517T083444_C001	Sea State Bias Correction, Altimetric Wind Speed	There is an error with the Altimetric Wind Speed and Sea State Bias Correction for one or more records
CS_OFFL_SIR_FDM_2_20190517T085050_20190517T085113_C001	Geocentric pole tide height	There is an error with the Geocentric Polar Tide Correction for one or more records
CS_OFFL_SIR_FDM_2_20190517T085310_20190517T085346_C001	Geocentric pole tide height	There is an error with the Geocentric Polar Tide Correction for one or more records
CS_OFFL_SIR_FDM_2_20190517T090732_20190517T091630_C001	Geocentric pole tide height	There is an error with the Geocentric Polar Tide Correction for one or more records
CS_OFFL_SIR_FDM_2_20190517T091759_20190517T093508_C001	Sea State Bias Correction, mean Sea Surface height, Geocentric pole tide height	There is an error with the Altimetric Wind Speed, Sea State Bias and Geocentric Pole Tide Height Correction for one or more records
CS_OFFL_SIR_FDM_2_20190517T093518_20190517T094038_C001	Sea State Bias Correction, Geocentric pole tide height, Altimetric Wind Speed	There is an error with the Altimetric Wind Speed, Sea State Bias and Geocentric Pole Tide Height Correction for one or more records
CS_OFFL_SIR_FDM_2_20190517T094638_20190517T094821_C001	Geocentric pole tide height	There is an error with the Geocentric Polar Tide Correction for one or more records
CS_OFFL_SIR_FDM_2_20190517T094828_20190517T095240_C001	Geocentric pole tide height	There is an error with the Geocentric Polar Tide Correction for one or more records
CS_OFFL_SIR_FDM_2_20190517T095615_20190517T101653_C001	Geocentric pole tide height	There is an error with the Geocentric Polar Tide Correction for one or more records
CS_OFFL_SIR_FDM_2_20190517T101725_20190517T103015_C001	Sea State Bias Correction, Geocentric pole tide height, Altimetric Wind Speed	There is an error with the Altimetric Wind Speed, Sea State Bias and Geocentric Pole Tide Height Correction for one or more records
CS_OFFL_SIR_FDM_2_20190517T104731_20190517T111958_C001	Sea State Bias Correction, Altimetric Wind Speed	There is an error with the Altimetric Wind Speed and Sea State Bias Correction for one or more records
CS_OFFL_SIR_FDM_2_20190517T123038_20190517T124151_C001	Sea State Bias Correction, Altimetric Wind Speed	There is an error with the Altimetric Wind Speed and Sea State Bias Correction for one or more records
CS_OFFL_SIR_FDM_2_20190517T124354_20190517T125849_C001	Sea State Bias Correction, Altimetric Wind Speed	There is an error with the Altimetric Wind Speed and Sea State Bias Correction for one or more records
CS_OFFL_SIR_FDM_2_20190517T131506_20190517T132025_C001	Sea State Bias Correction, Altimetric Wind Speed	There is an error with the Altimetric Wind Speed and Sea State Bias Correction for one or more records
CS_OFFL_SIR_FDM_2_20190517T132035_20190517T132713_C001	Sea State Bias Correction, Altimetric Wind Speed	There is an error with the Altimetric Wind Speed and Sea State Bias Correction for one or more records
CS_OFFL_SIR_FDM_2_20190517T133242_20190517T134414_C001	Sea State Bias Correction, Altimetric Wind Speed	There is an error with the Altimetric Wind Speed and Sea State Bias Correction for one or more records
CS_OFFL_SIR_FDM_2_20190517T145227_20190517T151459_C001	Sea State Bias Correction	There is an error with the Sea State Bias Correction for one or more records
CS_OFFL_SIR_FDM_2_20190517T151502_20190517T151853_C001	Sea State Bias Correction, Altimetric Wind Speed	There is an error with the Altimetric Wind Speed and Sea State Bias Correction for one or more records
CS_OFFL_SIR_FDM_2_20190517T172114_20190517T175721_C001	Sea State Bias Correction, Altimetric Wind Speed	There is an error with the Altimetric Wind Speed and Sea State Bias Correction for one or more records
CS_OFFL_SIR_FDM_2_20190517T181123_20190517T182218_C001	Sea State Bias Correction, Altimetric Wind Speed	There is an error with the Altimetric Wind Speed and Sea State Bias Correction for one or more records
CS_OFFL_SIR_FDM_2_20190517T182705_20190517T184537_C001	Sea State Bias Correction	There is an error with the Sea State Bias Correction for one or more records
CS_OFFL_SIR_FDM_2_20190517T185840_20190517T185959_C001	Sea State Bias Correction, Altimetric Wind Speed	There is an error with the Altimetric Wind Speed and Sea State Bias Correction for one or more records
CS_OFFL_SIR_FDM_2_20190517T195053_20190517T201234_C001	Sea State Bias Correction, Altimetric Wind Speed	There is an error with the Altimetric Wind Speed and Sea State Bias Correction for one or more records
CS_OFFL_SIR_FDM_2_20190517T205630_20190517T211453_C001	Sea State Bias Correction, Altimetric Wind Speed	There is an error with the Altimetric Wind Speed and Sea State Bias Correction for one or more records
CS_OFFL_SIR_FDM_2_20190517T212944_20190517T220237_C001	Sea State Bias Correction, Altimetric Wind Speed	There is an error with the Altimetric Wind Speed and Sea State Bias Correction for one or more records
CS_OFFL_SIR_FDM_2_20190517T220511_20190517T220631_C001	Sea State Bias Correction, Altimetric Wind Speed	There is an error with the Altimetric Wind Speed and Sea State Bias Correction for one or more records
CS_OFFL_SIR_FDM_2_20190517T222809_20190517T225102_C001	Sea State Bias Correction, Altimetric Wind Speed	There is an error with the Altimetric Wind Speed and Sea State Bias Correction for one or more records
CS_OFFL_SIR_FDM_2_20190517T230942_20190517T232505_C001	Sea State Bias Correction	There is an error with the Sea State Bias Correction for one or more records
CS_OFFL_SIR_FDM_2_20190517T233135_20190517T234116_C001	Sea State Bias Correction, Altimetric Wind Speed	There is an error with the Altimetric Wind Speed and Sea State Bias Correction for one or more records

## 6.5 L2 FDM Measurement Confidence Data Check

CryoSat L2 data includes a measurement confidence flag (field 8) for each 20-Hz measurement record. The bit value of this flag indicates any problems when set.

**Number of products with errors:** 4

Product	Test Failed	Description
CS_OFFL_SIR_FDM_2_20190517T035405_20190517T035446_C001	Attitude correction missing	The attitude has not been corrected
CS_OFFL_SIR_FDM_2_20190517T052825_20190517T053047_C001	Attitude correction missing	The attitude has not been corrected
CS_OFFL_SIR_FDM_2_20190517T070709_20190517T070828_C001	Attitude correction missing	The attitude has not been corrected
CS_OFFL_SIR_FDM_2_20190517T101725_20190517T103015_C001	Attitude correction missing	The attitude has not been corrected

## 6.6 L2 FDM Range Measurement Check

CryoSat L2 data includes a CFI (field 17) and OCOG (field 22) Range Averaging Status flag for each measurement record. The bit value of this flag indicates any problems when set.

**Number of products with errors:** 25

Product	Test Failed	Description
CS_OFFL_SIR_FDM_2_20190517T000017_20190517T001545_C001	CFI Retracked Range Flag	The master fail flag is set by the CFI call, for one or more records, indicating the values stored in fields #13, #14, #15 and #16 should be ignored for these records.
CS_OFFL_SIR_FDM_2_20190517T001749_20190517T002808_C001	CFI Retracked Range Flag	The master fail flag is set by the CFI call, for one or more records, indicating the values stored in fields #13, #14, #15 and #16 should be ignored for these records.
CS_OFFL_SIR_FDM_2_20190517T005230_20190517T010624_C001	CFI Retracked Range Flag	The master fail flag is set by the CFI call, for one or more records, indicating the values stored in fields #13, #14, #15 and #16 should be ignored for these records.







CS_OFFL_SIR_FDM_2__20190517T172114_20190517T175721_C001	Ocean Retracking Quality Flag	The Ocean Retracking Quality Flag is set indicating the CFI Ocean Retracker was not successfully executed for one or more records.
CS_OFFL_SIR_FDM_2__20190517T185840_20190517T185959_C001	Ocean Retracking Quality Flag	The Ocean Retracking Quality Flag is set indicating the CFI Ocean Retracker was not successfully executed for one or more records.
CS_OFFL_SIR_FDM_2__20190517T195053_20190517T201234_C001	Ocean Retracking Quality Flag	The Ocean Retracking Quality Flag is set indicating the CFI Ocean Retracker was not successfully executed for one or more records.
CS_OFFL_SIR_FDM_2__20190517T203717_20190517T203958_C001	Ocean Retracking Quality Flag	The Ocean Retracking Quality Flag is set indicating the CFI Ocean Retracker was not successfully executed for one or more records.
CS_OFFL_SIR_FDM_2__20190517T212944_20190517T220237_C001	Ocean Retracking Quality Flag	The Ocean Retracking Quality Flag is set indicating the CFI Ocean Retracker was not successfully executed for one or more records.
CS_OFFL_SIR_FDM_2__20190517T222809_20190517T225102_C001	Ocean Retracking Quality Flag	The Ocean Retracking Quality Flag is set indicating the CFI Ocean Retracker was not successfully executed for one or more records.
CS_OFFL_SIR_FDM_2__20190517T230942_20190517T232505_C001	Ocean Retracking Quality Flag	The Ocean Retracking Quality Flag is set indicating the CFI Ocean Retracker was not successfully executed for one or more records.
CS_OFFL_SIR_FDM_2__20190517T233135_20190517T234116_C001	Ocean Retracking Quality Flag	The Ocean Retracking Quality Flag is set indicating the CFI Ocean Retracker was not successfully executed for one or more records.

## 7. QCC Report Analysis

The Quality Control for CryoSat (QCC) facility performs a primary survey of data products immediately after production by the PDS and LTA processing facilities. A list of the tests which raised errors or warnings is provided below.

Product type	Nb. Products	Nb. QCC Reports	Nb. Valid	Nb. Warnings	Nb. Errors
SIR1LRM_0_	153	153	153	0	0
SIR1SAR_0_	117	117	117	0	0
SIR1SIN_0_	97	97	97	0	0
SIR2SIN_0_	105	105	105	0	0
SIR_FDM_1B	153	153	153	0	0
SIR_FDM_2	152	152	152	0	0

### 7.1 QCC Errors

Number of QCC reports with errors: 0

### 7.2 QCC Warnings

Number of QCC reports with warnings: 0

### 7.3 Missing QCC Reports

Number of products with missing QCC reports: 1

Product name
CS_OPER_SIR1SIN_0__20190517T205333_20190517T205333_0001