

1. Overview

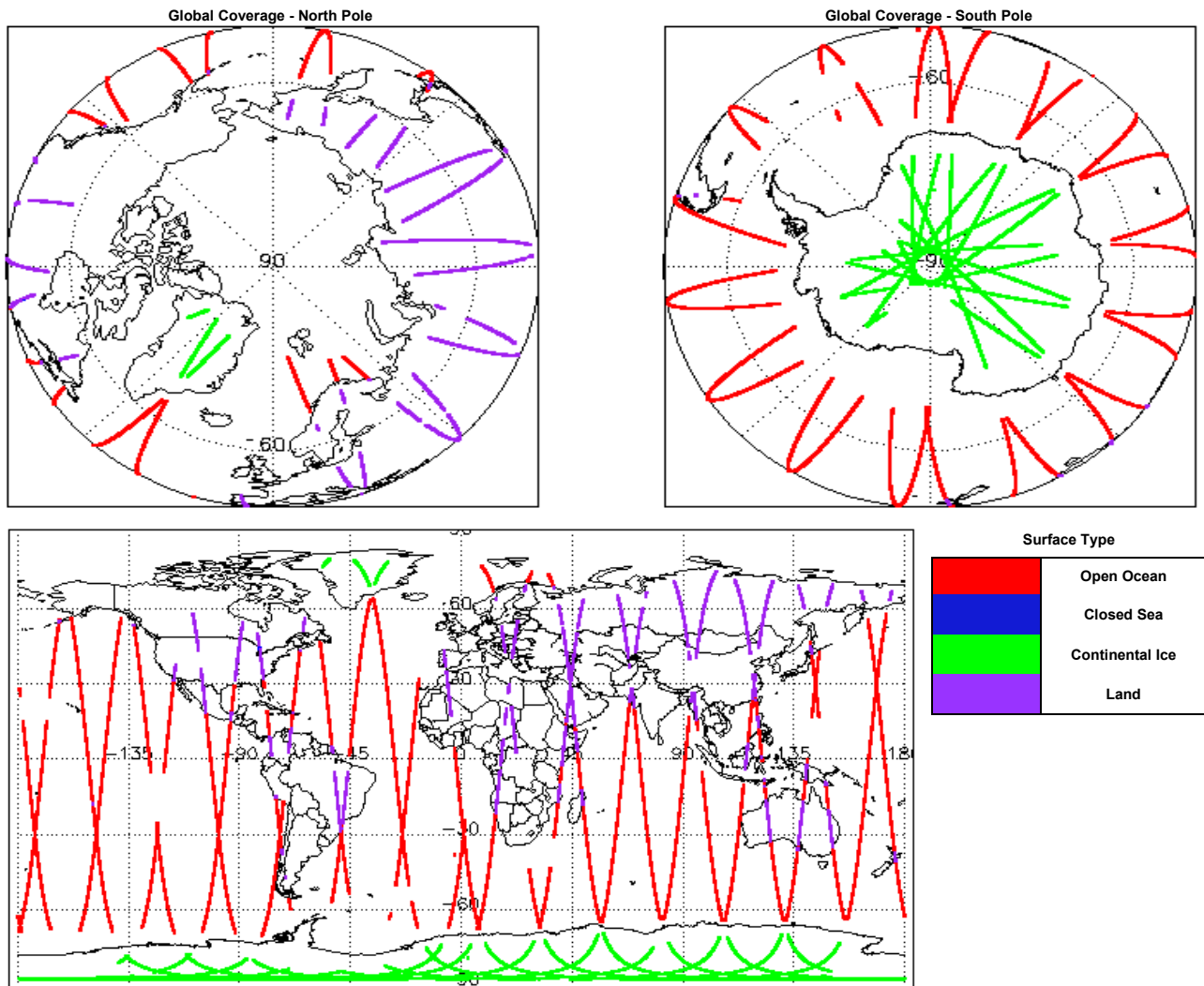
Report Production Date:	18-Mar-2019
Processor Used:	CryoSat Ice Processor
Data Used:	L1 and L2 Fast Delivery Marine (FDM) Mode and L0 Data

Check	Status
Server check: science-pds.cryosat.esa.int	Nominal
Server check: calval-pds.cryosat.esa.int	Nominal
Product Software Check	Nominal
Product Format Check	Nominal
Product Header Analysis	See Section 4.2
Star Tracker Usage Check	See Section 5.3
Calibration Usage Check	Nominal
Auxiliary Data File Usage Check	Nominal
Auxiliary Correction Error Check	See Section 6.4
Measurement Confidence Data Check	See Section 5.7, 6.5, 6.6, 6.7 and 6.8

Mission / Instrument News

16-Mar-2019	None
17-Mar-2019	None
18-Mar-2019	Nothing planned

2. Global Coverage



3. Instrument Configuration

The SIRAL instrument configuration for the day of acquisition is provided below.

SIRAL instrument(s) in use:	SIRAL - A
Star Tracker(s) in use:	Star Tracker 1 & 2

4. Level 0 Data Quality Check

4.1 L0 Product Format Check

Each product, retrieved and unpacked from the science server, is checked to ensure it consists of both an XML header file (.HDR) and a binary product file (.DBL).

Number of products with errors: 0

4.2 L0 Product Header Analysis

For all products, a series of pre-defined checks are carried out on the MPH and SPH in order to identify any inconsistencies and/or errors raised by the processing chain.

Number of products with errors: 5

Product	Test Failed
CS_OPER_SIR1SAR_0_20190317T064841_20190317T064955_0001.HDR	Percentage of processing errors detected greater than minimum acceptable threshold.
CS_OPER_SIR1SAR_0_20190317T005746_20190317T010000_0001.HDR	Percentage of processing errors detected greater than minimum acceptable threshold.
CS_OPER_SIR1SIN_0_20190317T074648_20190317T075834_0001.HDR	Percentage of processing errors detected greater than minimum acceptable threshold.
CS_OPER_SIR1SIN_0_20190317T105531_20190317T105618_0001.HDR	Percentage of processing errors detected greater than minimum acceptable threshold.
CS_OPER_SIR2SIN_0_20190317T074648_20190317T075834_0001.HDR	Percentage of processing errors detected greater than minimum acceptable threshold.

5. Level 1B FDM Data Quality Check

5.1 L1B FDM Product Format Check

Each product, retrieved and unpacked from the science server, is checked to ensure it consists of both an XML header file (.HDR) and a binary product file (.DBL).

Number of products with errors: 0

5.2 L1B FDM Product Header Analysis

For all products, a series of pre-defined checks are carried out on the MPH and SPH in order to identify any inconsistencies and/or errors raised by the ground-segment processing chain.

Number of products with errors: 0

5.3 L1B FDM Star Tracker Usage Check

Each product is checked in order to ensure a valid star tracker file has been used in processing.

Number of products with errors: 3

Product	Test Failed
CS_OFFL_SIR_FDM_1B_20190317T073030_20190317T073624_C001	No Star Tracker file used in the processing of this product
CS_OFFL_SIR_FDM_1B_20190317T105107_20190317T105136_C001	No Star Tracker file used in the processing of this product
CS_OFFL_SIR_FDM_1B_20190317T141519_20190317T141531_C001	No Star Tracker file used in the processing of this product

5.4 L1B FDM Calibration Usage Check

Each product is checked in order to ensure the necessary calibration files have been used in processing.

Number of products with errors: 0

5.5 L1B FDM Auxiliary Data File Usage Check

Each product is checked for missing Data Set Descriptors with respect to a pre-determined baseline and also to check the validity of Auxiliary Data Files is correct.

Number of products with errors: 0

5.6 L1B FDM Auxiliary Correction Error Check

CryoSat L1B data includes a correction error flag (field 54) for each measurement record. The bit value of this flag indicates any problems when set.

Number of products with errors: 0

5.7 L1B FDM Measurement Confidence Data Check

CryoSat L1B data includes a measurement confidence flag (field 18) for each measurement record. The bit value of this flag indicates any problems when set.

Number of products with errors: 3

Product	Test Failed	Description
CS_OFFL_SIR_FDM_1B_20190317T073030_20190317T073624_C001	Attitude correction missing	The attitude has not been corrected
CS_OFFL_SIR_FDM_1B_20190317T105107_20190317T105136_C001	Attitude correction missing	The attitude has not been corrected
CS_OFFL_SIR_FDM_1B_20190317T141519_20190317T141531_C001	Attitude correction missing	The attitude has not been corrected

6. Level 2 FDM Data Quality Check

6.1 L2 FDM Product Format Check

Each product, retrieved and unpacked from the science server, is checked to ensure it consists of both an XML header file (.HDR) and a binary product file (.DBL).

Number of products with errors: 0

6.2 L2 FDM Product Header Analysis

For all products, a series of pre-defined checks are carried out on the MPH and SPH in order to identify any inconsistencies and/or errors raised by the ground-segment processing chain.

Number of products with errors: 0

6.3 L2 FDM Auxiliary Data File Usage Check

Each product is checked for missing Data Set Descriptors with respect to a pre-determined baseline and also to check the validity of Auxiliary Data Files is correct.

Number of products with errors: 0

6.4 L2 FDM Auxiliary Correction Error Check

Each product is checked to detect auxiliary corrections flagged by the ground-station processing chain as missing or containing errors.

Number of products with errors: 32

Product	Test Failed	Description
CS_OFFL_SIR_FDM_2__20190316T235135_20190317T001119_C001	Sea State Bias Correction, Altimetric Wind Speed	There is an error with the Altimetric Wind Speed and Sea State Bias Correction for one or more records
CS_OFFL_SIR_FDM_2__20190317T002330_20190317T005746_C001	Sea State Bias Correction, Altimetric Wind Speed	There is an error with the Altimetric Wind Speed and Sea State Bias Correction for one or more records
CS_OFFL_SIR_FDM_2__20190317T014901_20190317T014933_C001	Sea State Bias Correction, Altimetric Wind Speed	There is an error with the Altimetric Wind Speed and Sea State Bias Correction for one or more records
CS_OFFL_SIR_FDM_2__20190317T020403_20190317T021243_C001	Sea State Bias Correction, Altimetric Wind Speed	There is an error with the Altimetric Wind Speed and Sea State Bias Correction for one or more records
CS_OFFL_SIR_FDM_2__20190317T021246_20190317T021906_C001	Sea State Bias Correction, Altimetric Wind Speed	There is an error with the Altimetric Wind Speed and Sea State Bias Correction for one or more records
CS_OFFL_SIR_FDM_2__20190317T022623_20190317T023433_C001	Sea State Bias Correction, Altimetric Wind Speed	There is an error with the Altimetric Wind Speed and Sea State Bias Correction for one or more records
CS_OFFL_SIR_FDM_2__20190317T031239_20190317T032701_C001	Sea State Bias Correction, Altimetric Wind Speed	There is an error with the Altimetric Wind Speed and Sea State Bias Correction for one or more records
CS_OFFL_SIR_FDM_2__20190317T034312_20190317T035848_C001	Sea State Bias Correction, Altimetric Wind Speed	There is an error with the Altimetric Wind Speed and Sea State Bias Correction for one or more records
CS_OFFL_SIR_FDM_2__20190317T040048_20190317T041010_C001	Sea State Bias Correction, Altimetric Wind Speed	There is an error with the Altimetric Wind Speed and Sea State Bias Correction for one or more records
CS_OFFL_SIR_FDM_2__20190317T043827_20190317T044938_C001	Sea State Bias Correction, Altimetric Wind Speed	There is an error with the Altimetric Wind Speed and Sea State Bias Correction for one or more records
CS_OFFL_SIR_FDM_2__20190317T045508_20190317T050952_C001	Sea State Bias Correction, Altimetric Wind Speed	There is an error with the Altimetric Wind Speed and Sea State Bias Correction for one or more records
CS_OFFL_SIR_FDM_2__20190317T062135_20190317T064841_C001	Sea State Bias Correction	There is an error with the Sea State Bias Correction for one or more records
CS_OFFL_SIR_FDM_2__20190317T070147_20190317T072702_C001	Sea State Bias Correction, Altimetric Wind Speed	There is an error with the Altimetric Wind Speed and Sea State Bias Correction for one or more records
CS_OFFL_SIR_FDM_2__20190317T075834_20190317T081019_C001	Sea State Bias Correction, Altimetric Wind Speed	There is an error with the Altimetric Wind Speed and Sea State Bias Correction for one or more records
CS_OFFL_SIR_FDM_2__20190317T084048_20190317T090849_C001	Sea State Bias Correction, Altimetric Wind Speed	There is an error with the Altimetric Wind Speed and Sea State Bias Correction for one or more records
CS_OFFL_SIR_FDM_2__20190317T091724_20190317T091859_C001	Sea State Bias Correction, Altimetric Wind Speed	There is an error with the Altimetric Wind Speed and Sea State Bias Correction for one or more records
CS_OFFL_SIR_FDM_2__20190317T093234_20190317T100701_C001	Sea State Bias Correction, Altimetric Wind Speed	There is an error with the Altimetric Wind Speed and Sea State Bias Correction for one or more records
CS_OFFL_SIR_FDM_2__20190317T105618_20190317T105625_C001	Sea State Bias Correction, Altimetric Wind Speed	There is an error with the Altimetric Wind Speed and Sea State Bias Correction for one or more records
CS_OFFL_SIR_FDM_2__20190317T111204_20190317T112030_C001	Sea State Bias Correction, Altimetric Wind Speed	There is an error with the Altimetric Wind Speed and Sea State Bias Correction for one or more records
CS_OFFL_SIR_FDM_2__20190317T125037_20190317T132412_C001	Sea State Bias Correction, Altimetric Wind Speed	There is an error with the Altimetric Wind Speed and Sea State Bias Correction for one or more records
CS_OFFL_SIR_FDM_2__20190317T134231_20190317T141352_C001	Sea State Bias Correction, Altimetric Wind Speed	There is an error with the Altimetric Wind Speed and Sea State Bias Correction for one or more records
CS_OFFL_SIR_FDM_2__20190317T142758_20190317T142856_C001	Sea State Bias Correction, Altimetric Wind Speed	There is an error with the Altimetric Wind Speed and Sea State Bias Correction for one or more records
CS_OFFL_SIR_FDM_2__20190317T143402_20190317T144107_C001	Sea State Bias Correction, Altimetric Wind Speed	There is an error with the Altimetric Wind Speed and Sea State Bias Correction for one or more records
CS_OFFL_SIR_FDM_2__20190317T144710_20190317T150335_C001	Sea State Bias Correction, Altimetric Wind Speed	There is an error with the Altimetric Wind Speed and Sea State Bias Correction for one or more records
CS_OFFL_SIR_FDM_2__20190317T161545_20190317T162609_C001	Sea State Bias Correction, Altimetric Wind Speed	There is an error with the Altimetric Wind Speed and Sea State Bias Correction for one or more records
CS_OFFL_SIR_FDM_2__20190317T162749_20190317T164246_C001	Sea State Bias Correction, Altimetric Wind Speed	There is an error with the Altimetric Wind Speed and Sea State Bias Correction for one or more records
CS_OFFL_SIR_FDM_2__20190317T171528_20190317T171958_C001	Sea State Bias Correction, Altimetric Wind Speed	There is an error with the Altimetric Wind Speed and Sea State Bias Correction for one or more records
CS_OFFL_SIR_FDM_2__20190317T175934_20190317T182155_C001	Sea State Bias Correction, Altimetric Wind Speed	There is an error with the Altimetric Wind Speed and Sea State Bias Correction for one or more records
CS_OFFL_SIR_FDM_2__20190317T183453_20190317T190344_C001	Sea State Bias Correction, Altimetric Wind Speed	There is an error with the Altimetric Wind Speed and Sea State Bias Correction for one or more records
CS_OFFL_SIR_FDM_2__20190317T193550_20190317T200124_C001	Sea State Bias Correction, Altimetric Wind Speed	There is an error with the Altimetric Wind Speed and Sea State Bias Correction for one or more records
CS_OFFL_SIR_FDM_2__20190317T211145_20190317T213116_C001	Sea State Bias Correction, Altimetric Wind Speed	There is an error with the Altimetric Wind Speed and Sea State Bias Correction for one or more records
CS_OFFL_SIR_FDM_2__20190317T215330_20190317T222750_C001	Sea State Bias Correction, Altimetric Wind Speed	There is an error with the Altimetric Wind Speed and Sea State Bias Correction for one or more records

6.5 L2 FDM Measurement Confidence Data Check

CryoSat L2 data includes a measurement confidence flag (field 8) for each 20-Hz measurement record. The bit value of this flag indicates any problems when set.

Number of products with errors: 3

Product	Test Failed	Description
CS_OFFL_SIR_FDM_2__20190317T073030_20190317T073624_C001	Attitude correction missing	The attitude has not been corrected
CS_OFFL_SIR_FDM_2__20190317T105107_20190317T105136_C001	Attitude correction missing	The attitude has not been corrected
CS_OFFL_SIR_FDM_2__20190317T141519_20190317T141531_C001	Attitude correction missing	The attitude has not been corrected

6.6 L2 FDM Range Measurement Check

CryoSat L2 data includes a CFI (field 17) and OCOG (field 22) Range Averaging Status flag for each measurement record. The bit value of this flag indicates any problems when set.

Number of products with errors: 23

Product	Test Failed	Description
CS_OFFL_SIR_FDM_2__20190317T002330_20190317T005746_C001	CFI Retracked Range Flag	The master fail flag is set by the CFI call, for one or more records, indicating the values stored in fields #13, #14, #15 and #16 should be ignored for these records.
CS_OFFL_SIR_FDM_2__20190317T020403_20190317T021243_C001	CFI Retracked Range Flag	The master fail flag is set by the CFI call, for one or more records, indicating the values stored in fields #13, #14, #15 and #16 should be ignored for these records.
CS_OFFL_SIR_FDM_2__20190317T021246_20190317T021906_C001	CFI Retracked Range Flag	The master fail flag is set by the CFI call, for one or more records, indicating the values stored in fields #13, #14, #15 and #16 should be ignored for these records.
CS_OFFL_SIR_FDM_2__20190317T022623_20190317T023433_C001	CFI Retracked Range Flag	The master fail flag is set by the CFI call, for one or more records, indicating the values stored in fields #13, #14, #15 and #16 should be ignored for these records.
CS_OFFL_SIR_FDM_2__20190317T031239_20190317T032701_C001	CFI Retracked Range Flag	The master fail flag is set by the CFI call, for one or more records, indicating the values stored in fields #13, #14, #15 and #16 should be ignored for these records.

CS_OFFL_SIR_FDM_2__20190317T183453_20190317T190344_C001	Ocean Retracking Quality Flag	The Ocean Retracking Quality Flag is set indicating the CFI Ocean Retracker was not successfully executed for one or more records.
CS_OFFL_SIR_FDM_2__20190317T193550_20190317T200124_C001	Ocean Retracking Quality Flag	The Ocean Retracking Quality Flag is set indicating the CFI Ocean Retracker was not successfully executed for one or more records.
CS_OFFL_SIR_FDM_2__20190317T201400_20190317T202609_C001	Ocean Retracking Quality Flag	The Ocean Retracking Quality Flag is set indicating the CFI Ocean Retracker was not successfully executed for one or more records.
CS_OFFL_SIR_FDM_2__20190317T203147_20190317T204756_C001	Ocean Retracking Quality Flag	The Ocean Retracking Quality Flag is set indicating the CFI Ocean Retracker was not successfully executed for one or more records.
CS_OFFL_SIR_FDM_2__20190317T211145_20190317T213116_C001	Ocean Retracking Quality Flag	The Ocean Retracking Quality Flag is set indicating the CFI Ocean Retracker was not successfully executed for one or more records.
CS_OFFL_SIR_FDM_2__20190317T215330_20190317T222750_C001	Ocean Retracking Quality Flag	The Ocean Retracking Quality Flag is set indicating the CFI Ocean Retracker was not successfully executed for one or more records.
CS_OFFL_SIR_FDM_2__20190317T230314_20190317T232042_C001	Ocean Retracking Quality Flag	The Ocean Retracking Quality Flag is set indicating the CFI Ocean Retracker was not successfully executed for one or more records.
CS_OFFL_SIR_FDM_2__20190317T233256_20190317T235546_C001	Ocean Retracking Quality Flag	The Ocean Retracking Quality Flag is set indicating the CFI Ocean Retracker was not successfully executed for one or more records.

7. QCC Report Analysis

The Quality Control for CryoSat (QCC) facility performs a primary survey of data products immediately after production by the PDS and LTA processing facilities. A list of the tests which raised errors or warnings is provided below.

Product type	Nb. Products	Nb. QCC Reports	Nb. Valid	Nb. Warnings	Nb. Errors
SIR1LRM_0_	158	158	158	0	0
SIR1SAR_0_	104	104	104	0	0
SIR1SIN_0_	99	99	99	0	0
SIR2SIN_0_	104	104	104	0	0
SIR_FDM_1B	158	158	158	0	0
SIR_FDM_2	153	153	153	0	0

7.1 QCC Errors

Number of QCC reports with errors: 0

7.2 QCC Warnings

Number of QCC reports with warnings: 0

7.3 Missing QCC Reports

Number of products with missing QCC reports: 0