

1. Overview

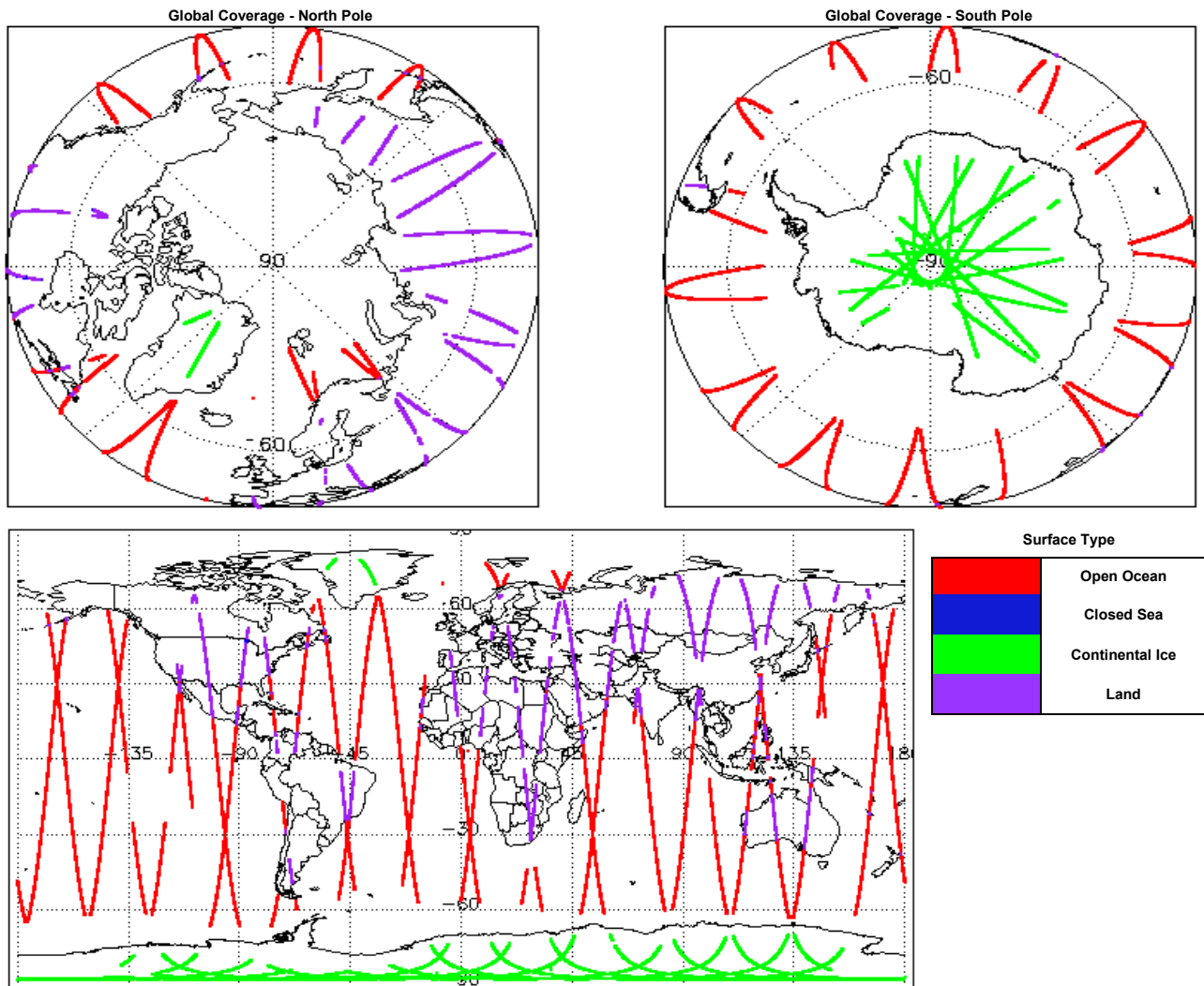
Report Production Date:	17-Dec-2018
Processor Used:	CryoSat Ice Processor
Data Used:	L1 and L2 Fast Delivery Marine (FDM) Mode and L0 Data

Check	Status
Server check: science-pds.cryosat.esa.int	Nominal
Server check: calval-pds.cryosat.esa.int	Nominal
Product Software Check	Nominal
Product Format Check	Nominal
Product Header Analysis	See Section 4.2
Star Tracker Usage Check	See Section 5.3
Calibration Usage Check	Nominal
Auxiliary Data File Usage Check	Nominal
Auxiliary Correction Error Check	See Section 6.4
Measurement Confidence Data Check	See Section 5.7, 6.5, 6.6, 6.7 and 6.8

Mission / Instrument News

15-Dec-2018	None
16-Dec-2018	None
17-Dec-2018	Nothing planned

2. Global Coverage



3. Instrument Configuration

The SIRAL instrument configuration for the day of acquisition is provided below.

SIRAL instrument(s) in use:	SIRAL - A
Star Tracker(s) in use:	Star Tracker 1

4. Level 0 Data Quality Check

4.1 L0 Product Format Check

Each product, retrieved and unpacked from the science server, is checked to ensure it consists of both an XML header file (.HDR) and a binary product file (.DBL).

Number of products with errors: 0

4.2 L0 Product Header Analysis

For all products, a series of pre-defined checks are carried out on the MPH and SPH in order to identify any inconsistencies and/or errors raised by the processing chain.

Number of products with errors: 0

5. Level 1B FDM Data Quality Check

5.1 L1B FDM Product Format Check

Each product, retrieved and unpacked from the science server, is checked to ensure it consists of both an XML header file (.HDR) and a binary product file (.DBL).

Number of products with errors: 0

5.2 L1B FDM Product Header Analysis

For all products, a series of pre-defined checks are carried out on the MPH and SPH in order to identify any inconsistencies and/or errors raised by the ground-segment processing chain.

Number of products with errors: 0

5.3 L1B FDM Star Tracker Usage Check

Each product is checked in order to ensure a valid star tracker file has been used in processing.

Number of products with errors: 2

Product	Test Failed
CS_OFFL_SIR_FDM_1B_20181216T115632_20181216T115636_C001	No Star Tracker file used in the processing of this product
CS_OFFL_SIR_FDM_1B_20181216T151010_20181216T151125_C001	No Star Tracker file used in the processing of this product

5.4 L1B FDM Calibration Usage Check

Each product is checked in order to ensure the necessary calibration files have been used in processing.

Number of products with errors: 0

5.5 L1B FDM Auxiliary Data File Usage Check

Each product is checked for missing Data Set Descriptors with respect to a pre-determined baseline and also to check the validity of Auxiliary Data Files is correct.

Number of products with errors: 0

5.6 L1B FDM Auxiliary Correction Error Check

CryoSat L1B data includes a correction error flag (field 54) for each measurement record. The bit value of this flag indicates any problems when set.

Number of products with errors: 0

5.7 L1B FDM Measurement Confidence Data Check

CryoSat L1B data includes a measurement confidence flag (field 18) for each measurement record. The bit value of this flag indicates any problems when set.

Number of products with errors: 31

Product	Test Failed	Description
CS_OFFL_SIR_FDM_1B_20181215T234616_20181216T001436_C001	Blank block, Block degraded	A blank block has been inserted for record padding
CS_OFFL_SIR_FDM_1B_20181216T001439_20181216T001440_C001	Blank block, Block degraded	A blank block has been inserted for record padding
CS_OFFL_SIR_FDM_1B_20181216T001445_20181216T001501_C001	Blank block, Block degraded	A blank block has been inserted for record padding
CS_OFFL_SIR_FDM_1B_20181216T003702_20181216T004118_C001	Blank block, Block degraded	A blank block has been inserted for record padding
CS_OFFL_SIR_FDM_1B_20181216T004224_20181216T004502_C001	Blank block, Block degraded	A blank block has been inserted for record padding
CS_OFFL_SIR_FDM_1B_20181216T004504_20181216T011108_C001	Blank block, Block degraded	A blank block has been inserted for record padding
CS_OFFL_SIR_FDM_1B_20181216T011344_20181216T011844_C001	Blank block, Block degraded	A blank block has been inserted for record padding
CS_OFFL_SIR_FDM_1B_20181216T011852_20181216T012219_C001	Blank block, Block degraded	A blank block has been inserted for record padding
CS_OFFL_SIR_FDM_1B_20181216T014229_20181216T020008_C001	Blank block, Block degraded	A blank block has been inserted for record padding
CS_OFFL_SIR_FDM_1B_20181216T021254_20181216T021448_C001	Blank block, Block degraded	A blank block has been inserted for record padding
CS_OFFL_SIR_FDM_1B_20181216T021614_20181216T021902_C001	Blank block, Block degraded	A blank block has been inserted for record padding
CS_OFFL_SIR_FDM_1B_20181216T021935_20181216T022015_C001	Blank block, Block degraded	A blank block has been inserted for record padding
CS_OFFL_SIR_FDM_1B_20181216T022214_20181216T022317_C001	Blank block, Block degraded	A blank block has been inserted for record padding
CS_OFFL_SIR_FDM_1B_20181216T022432_20181216T023237_C001	Blank block, Block degraded	A blank block has been inserted for record padding
CS_OFFL_SIR_FDM_1B_20181216T023611_20181216T023742_C001	Blank block, Block degraded	A blank block has been inserted for record padding
CS_OFFL_SIR_FDM_1B_20181216T023746_20181216T024217_C001	Blank block, Block degraded	A blank block has been inserted for record padding
CS_OFFL_SIR_FDM_1B_20181216T024532_20181216T024916_C001	Blank block, Block degraded	A blank block has been inserted for record padding
CS_OFFL_SIR_FDM_1B_20181216T025343_20181216T025916_C001	Blank block, Block degraded	A blank block has been inserted for record padding
CS_OFFL_SIR_FDM_1B_20181216T030557_20181216T033900_C001	Blank block, Block degraded	A blank block has been inserted for record padding
CS_OFFL_SIR_FDM_1B_20181216T035219_20181216T035326_C001	Blank block, Block degraded	A blank block has been inserted for record padding
CS_OFFL_SIR_FDM_1B_20181216T035443_20181216T035454_C001	Blank block, Block degraded	A blank block has been inserted for record padding
CS_OFFL_SIR_FDM_1B_20181216T035804_20181216T035814_C001	Blank block, Block degraded	A blank block has been inserted for record padding
CS_OFFL_SIR_FDM_1B_20181216T035843_20181216T035907_C001	Blank block, Block degraded	A blank block has been inserted for record padding
CS_OFFL_SIR_FDM_1B_20181216T035917_20181216T035930_C001	Blank block, Block degraded	A blank block has been inserted for record padding
CS_OFFL_SIR_FDM_1B_20181216T040257_20181216T040301_C001	Blank block, Block degraded	A blank block has been inserted for record padding
CS_OFFL_SIR_FDM_1B_20181216T040328_20181216T040522_C001	Blank block, Block degraded	A blank block has been inserted for record padding
CS_OFFL_SIR_FDM_1B_20181216T040705_20181216T041003_C001	Blank block, Block degraded	A blank block has been inserted for record padding
CS_OFFL_SIR_FDM_1B_20181216T041146_20181216T042814_C001	Blank block, Block degraded	A blank block has been inserted for record padding
CS_OFFL_SIR_FDM_1B_20181216T043303_20181216T043811_C001	Blank block, Block degraded	A blank block has been inserted for record padding
CS_OFFL_SIR_FDM_1B_20181216T044430_20181216T051820_C001	Blank block, Block degraded	A blank block has been inserted for record padding
CS_OFFL_SIR_FDM_1B_20181216T052002_20181216T052054_C001	Blank block, Block degraded	A blank block has been inserted for record padding

6. Level 2 FDM Data Quality Check

6.1 L2 FDM Product Format Check

Each product, retrieved and unpacked from the science server, is checked to ensure it consists of both an XML header file (.HDR) and a binary product file (.DBL).

Number of products with errors: 0

6.2 L2 FDM Product Header Analysis

For all products, a series of pre-defined checks are carried out on the MPH and SPH in order to identify any inconsistencies and/or errors raised by the ground-segment processing chain.

Number of products with errors: 0

6.3 L2 FDM Auxiliary Data File Usage Check

Each product is checked for missing Data Set Descriptors with respect to a pre-determined baseline and also to check the validity of Auxiliary Data Files is correct.

Number of products with errors: 0

6.4 L2 FDM Auxiliary Correction Error Check

Each product is checked to detect auxiliary corrections flagged by the ground-station processing chain as missing or containing errors.

Number of products with errors: 33

Product	Test Failed	Description
CS_OFFL_SIR_FDM_2_20181215T234616_20181216T001436_C001	Sea State Bias Correction, Altimetric Wind Speed	There is an error with the Altimetric Wind Speed and Sea State Bias Correction for one or more records
CS_OFFL_SIR_FDM_2_20181216T004504_20181216T011108_C001	Sea State Bias Correction, Altimetric Wind Speed	There is an error with the Altimetric Wind Speed and Sea State Bias Correction for one or more records
CS_OFFL_SIR_FDM_2_20181216T014229_20181216T020008_C001	Sea State Bias Correction	There is an error with the Sea State Bias Correction for one or more records
CS_OFFL_SIR_FDM_2_20181216T022432_20181216T023237_C001	Sea State Bias Correction, Altimetric Wind Speed	There is an error with the Altimetric Wind Speed and Sea State Bias Correction for one or more records
CS_OFFL_SIR_FDM_2_20181216T024532_20181216T024916_C001	Sea State Bias Correction, Altimetric Wind Speed	There is an error with the Altimetric Wind Speed and Sea State Bias Correction for one or more records
CS_OFFL_SIR_FDM_2_20181216T030557_20181216T033900_C001	Sea State Bias Correction	There is an error with the Sea State Bias Correction for one or more records
CS_OFFL_SIR_FDM_2_20181216T041146_20181216T042814_C001	Sea State Bias Correction, Altimetric Wind Speed	There is an error with the Altimetric Wind Speed and Sea State Bias Correction for one or more records
CS_OFFL_SIR_FDM_2_20181216T044430_20181216T051820_C001	Sea State Bias Correction, Altimetric Wind Speed	There is an error with the Altimetric Wind Speed and Sea State Bias Correction for one or more records
CS_OFFL_SIR_FDM_2_20181216T054805_20181216T060544_C001	Sea State Bias Correction, Altimetric Wind Speed	There is an error with the Altimetric Wind Speed and Sea State Bias Correction for one or more records
CS_OFFL_SIR_FDM_2_20181216T071316_20181216T073102_C001	Sea State Bias Correction, Altimetric Wind Speed	There is an error with the Altimetric Wind Speed and Sea State Bias Correction for one or more records
CS_OFFL_SIR_FDM_2_20181216T080322_20181216T081841_C001	Sea State Bias Correction, Altimetric Wind Speed	There is an error with the Altimetric Wind Speed and Sea State Bias Correction for one or more records
CS_OFFL_SIR_FDM_2_20181216T082042_20181216T083005_C001	Sea State Bias Correction, Altimetric Wind Speed	There is an error with the Altimetric Wind Speed and Sea State Bias Correction for one or more records
CS_OFFL_SIR_FDM_2_20181216T085321_20181216T085414_C001	Sea State Bias Correction, Altimetric Wind Speed	There is an error with the Altimetric Wind Speed and Sea State Bias Correction for one or more records
CS_OFFL_SIR_FDM_2_20181216T085704_20181216T090911_C001	Sea State Bias Correction, Altimetric Wind Speed	There is an error with the Altimetric Wind Speed and Sea State Bias Correction for one or more records
CS_OFFL_SIR_FDM_2_20181216T094307_20181216T095748_C001	Sea State Bias Correction, Altimetric Wind Speed	There is an error with the Altimetric Wind Speed and Sea State Bias Correction for one or more records
CS_OFFL_SIR_FDM_2_20181216T103509_20181216T110758_C001	Sea State Bias Correction, Altimetric Wind Speed	There is an error with the Altimetric Wind Speed and Sea State Bias Correction for one or more records
CS_OFFL_SIR_FDM_2_20181216T112232_20181216T114657_C001	Sea State Bias Correction, Altimetric Wind Speed	There is an error with the Altimetric Wind Speed and Sea State Bias Correction for one or more records
CS_OFFL_SIR_FDM_2_20181216T121916_20181216T123012_C001	Sea State Bias Correction	There is an error with the Sea State Bias Correction for one or more records
CS_OFFL_SIR_FDM_2_20181216T123549_20181216T124557_C001	Sea State Bias Correction	There is an error with the Sea State Bias Correction for one or more records
CS_OFFL_SIR_FDM_2_20181216T130129_20181216T132125_C001	Sea State Bias Correction, Altimetric Wind Speed	There is an error with the Altimetric Wind Speed and Sea State Bias Correction for one or more records
CS_OFFL_SIR_FDM_2_20181216T133704_20181216T133907_C001	Sea State Bias Correction, Altimetric Wind Speed	There is an error with the Altimetric Wind Speed and Sea State Bias Correction for one or more records
CS_OFFL_SIR_FDM_2_20181216T135248_20181216T142510_C001	Sea State Bias Correction	There is an error with the Sea State Bias Correction for one or more records
CS_OFFL_SIR_FDM_2_20181216T144104_20181216T144539_C001	Sea State Bias Correction, Altimetric Wind Speed	There is an error with the Altimetric Wind Speed and Sea State Bias Correction for one or more records
CS_OFFL_SIR_FDM_2_20181216T153145_20181216T160504_C001	Sea State Bias Correction, Altimetric Wind Speed	There is an error with the Altimetric Wind Speed and Sea State Bias Correction for one or more records
CS_OFFL_SIR_FDM_2_20181216T170958_20181216T174337_C001	Sea State Bias Correction, Altimetric Wind Speed	There is an error with the Altimetric Wind Speed and Sea State Bias Correction for one or more records
CS_OFFL_SIR_FDM_2_20181216T182651_20181216T183359_C001	Sea State Bias Correction, Altimetric Wind Speed	There is an error with the Altimetric Wind Speed and Sea State Bias Correction for one or more records
CS_OFFL_SIR_FDM_2_20181216T190542_20181216T192306_C001	Sea State Bias Correction, Altimetric Wind Speed	There is an error with the Altimetric Wind Speed and Sea State Bias Correction for one or more records
CS_OFFL_SIR_FDM_2_20181216T195611_20181216T200938_C001	Sea State Bias Correction, Altimetric Wind Speed	There is an error with the Altimetric Wind Speed and Sea State Bias Correction for one or more records
CS_OFFL_SIR_FDM_2_20181216T203535_20181216T204602_C001	Sea State Bias Correction, Altimetric Wind Speed	There is an error with the Altimetric Wind Speed and Sea State Bias Correction for one or more records
CS_OFFL_SIR_FDM_2_20181216T204741_20181216T210149_C001	Sea State Bias Correction, Altimetric Wind Speed	There is an error with the Altimetric Wind Speed and Sea State Bias Correction for one or more records
CS_OFFL_SIR_FDM_2_20181216T214111_20181216T214757_C001	Sea State Bias Correction, Altimetric Wind Speed	There is an error with the Altimetric Wind Speed and Sea State Bias Correction for one or more records
CS_OFFL_SIR_FDM_2_20181216T222002_20181216T222214_C001	Sea State Bias Correction	There is an error with the Sea State Bias Correction for one or more records
CS_OFFL_SIR_FDM_2_20181216T222224_20181216T224037_C001	Sea State Bias Correction	There is an error with the Sea State Bias Correction for one or more records

6.5 L2 FDM Measurement Confidence Data Check

CryoSat L2 data includes a measurement confidence flag (field 8) for each 20-Hz measurement record. The bit value of this flag indicates any problems when set.

Number of products with errors: 2

Product	Test Failed	Description
CS_OFFL_SIR_FDM_2_20181216T115632_20181216T115636_C001	Attitude correction missing	The attitude has not been corrected
CS_OFFL_SIR_FDM_2_20181216T151010_20181216T151125_C001	Attitude correction missing	The attitude has not been corrected

7. QCC Report Analysis

The Quality Control for CryoSat (QCC) facility performs a primary survey of data products immediately after production by the PDS and LTA processing facilities. A list of the tests which raised errors or warnings is provided below.

Product type	Nb. Products	Nb. QCC Reports	Nb. Valid	Nb. Warnings	Nb. Errors
SIR1LRM_0_	166	166	166	0	0
SIR1SAR_0_	115	115	115	0	0
SIR1SIN_0_	98	98	98	0	0
SIR2SIN_0_	104	104	104	0	0
SIR_FDM_1B	166	166	166	0	0
SIR_FDM_2	162	162	162	0	0

7.1 QCC Errors

Number of QCC reports with errors: 0

7.2 QCC Warnings

Number of QCC reports with warnings: 0

7.3 Missing QCC Reports

Number of products with missing QCC reports: 0