

1. Overview

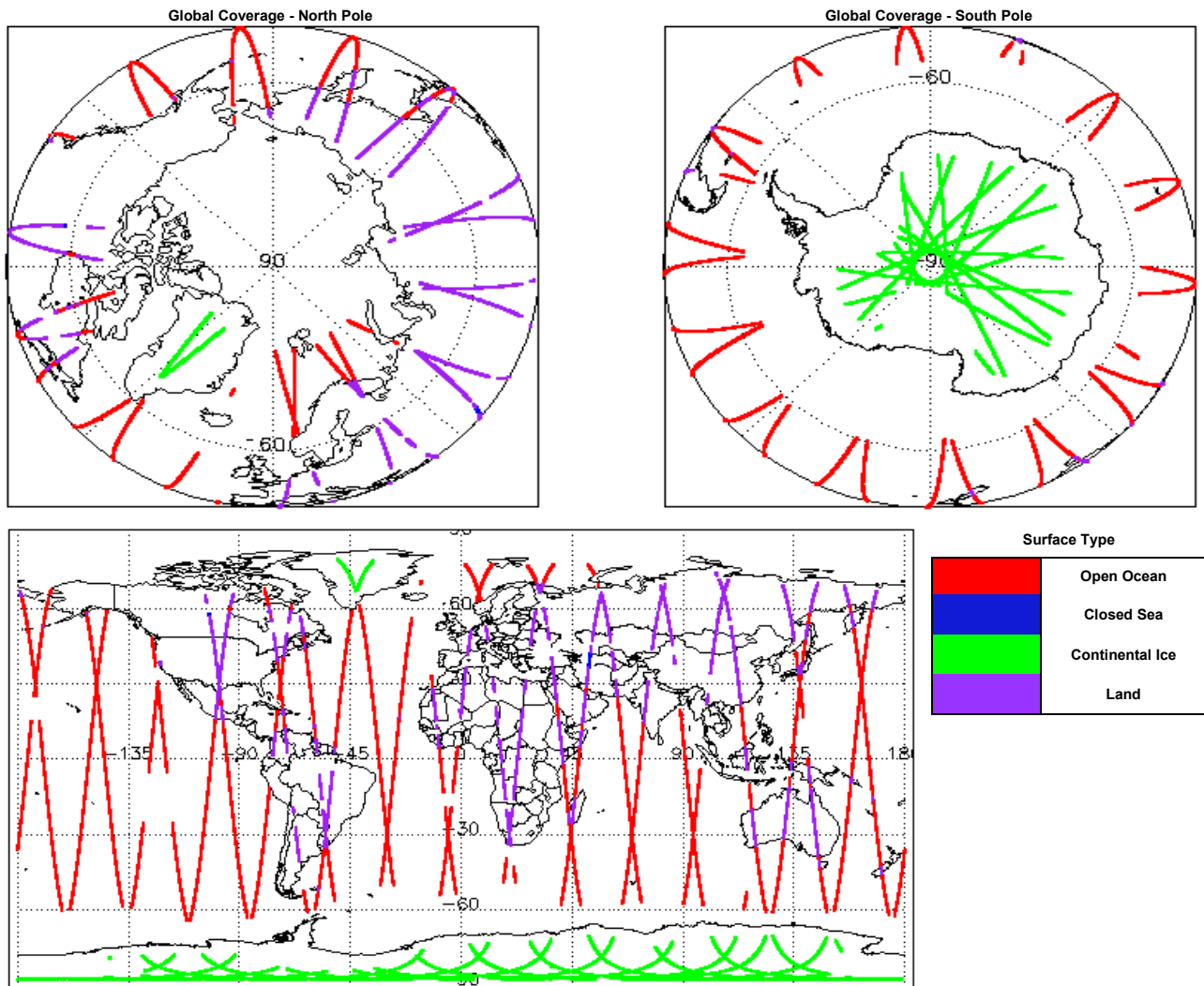
Report Production Date:	15-Oct-2018
Processor Used:	CryoSat Ice Processor
Data Used:	L1 and L2 Fast Delivery Marine (FDM) Mode and L0 Data

Check	Status
Server check: science-pds.cryosat.esa.int	Nominal
Server check: calval-pds.cryosat.esa.int	Nominal
Product Software Check	Nominal
Product Format Check	Nominal
Product Header Analysis	See Section 4.2
Star Tracker Usage Check	See Section 5.3
Calibration Usage Check	Nominal
Auxiliary Data File Usage Check	Nominal
Auxiliary Correction Error Check	See Section 6.4
Measurement Confidence Data Check	See Section 5.7, 6.5, 6.6, 6.7 and 6.8

Mission / Instrument News

11-Oct-2018	None
12-Oct-2018	None
13-Oct-2018	Nothing planned

2. Global Coverage



3. Instrument Configuration

The SIRAL instrument configuration for the day of acquisition is provided below.

SIRAL instrument(s) in use:	SIRAL - A
Star Tracker(s) in use:	Star Tracker 2

4. Level 0 Data Quality Check

4.1 L0 Product Format Check

Each product, retrieved and unpacked from the science server, is checked to ensure it consists of both an XML header file (.HDR) and a binary product file (.DBL).

Number of products with errors: 0

4.2 L0 Product Header Analysis

For all products, a series of pre-defined checks are carried out on the MPH and SPH in order to identify any inconsistencies and/or errors raised by the processing chain.

Number of products with errors: 11

Product	Test Failed
CS_OPER_SIR1SAR_0_20181012T041227_20181012T042127_0001.HDR	Percentage of processing errors detected greater than minimum acceptable threshold.
CS_OPER_SIR1SAR_0_20181012T105500_20181012T105610_0001.HDR	Percentage of processing errors detected greater than minimum acceptable threshold.
CS_OPER_SIR1SAR_0_20181012T011940_20181012T012225_0001.HDR	Percentage of processing errors detected greater than minimum acceptable threshold.
CS_OPER_SIR1SAR_0_20181012T090946_20181012T091614_0001.HDR	Percentage of processing errors detected greater than minimum acceptable threshold.
CS_OPER_SIR1SAR_0_20181012T133041_20181012T133214_0001.HDR	Percentage of processing errors detected greater than minimum acceptable threshold.
CS_OPER_SIR1SAR_0_20181012T051150_20181012T051557_0001.HDR	Percentage of processing errors detected greater than minimum acceptable threshold.
CS_OPER_SIR1SIN_0_20181012T015032_20181012T015349_0001.HDR	Percentage of processing errors detected greater than minimum acceptable threshold.
CS_OPER_SIR1SIN_0_20181012T011441_20181012T011658_0001.HDR	Percentage of processing errors detected greater than minimum acceptable threshold.
CS_OPER_SIR2SIN_0_20181012T182552_20181012T182707_0001.HDR	Percentage of processing errors detected greater than minimum acceptable threshold.
CS_OPER_SIR2SIN_0_20181012T005314_20181012T005713_0001.HDR	Percentage of processing errors detected greater than minimum acceptable threshold.
CS_OPER_SIR2SIN_0_20181012T025112_20181012T025442_0001.HDR	Percentage of processing errors detected greater than minimum acceptable threshold.

5. Level 1B FDM Data Quality Check

5.1 L1B FDM Product Format Check

Each product, retrieved and unpacked from the science server, is checked to ensure it consists of both an XML header file (.HDR) and a binary product file (.DBL).

Number of products with errors: 0

5.2 L1B FDM Product Header Analysis

For all products, a series of pre-defined checks are carried out on the MPH and SPH in order to identify any inconsistencies and/or errors raised by the ground-segment processing chain.

Number of products with errors: 0

5.3 L1B FDM Star Tracker Usage Check

Each product is checked in order to ensure a valid star tracker file has been used in processing.

Number of products with errors: 4

Product	Test Failed
CS_OFFL_SIR_FDM_1B_20181012T154028_20181012T154348_C001	No Star Tracker file used in the processing of this product
CS_OFFL_SIR_FDM_1B_20181012T172002_20181012T172054_C001	No Star Tracker file used in the processing of this product
CS_OFFL_SIR_FDM_1B_20181012T185928_20181012T185955_C001	No Star Tracker file used in the processing of this product
CS_OFFL_SIR_FDM_1B_20181012T222256_20181012T222528_C001	No Star Tracker file used in the processing of this product

5.4 L1B FDM Calibration Usage Check

Each product is checked in order to ensure the necessary calibration files have been used in processing.

Number of products with errors: 0

5.5 L1B FDM Auxiliary Data File Usage Check

Each product is checked for missing Data Set Descriptors with respect to a pre-determined baseline and also to check the validity of Auxiliary Data Files is correct.

Number of products with errors: 0

5.6 L1B FDM Auxiliary Correction Error Check

CryoSat L1B data includes a correction error flag (field 54) for each measurement record. The bit value of this flag indicates any problems when set.

Number of products with errors: 0

5.7 L1B FDM Measurement Confidence Data Check

CryoSat L1B data includes a measurement confidence flag (field 18) for each measurement record. The bit value of this flag indicates any problems when set.

Number of products with errors: 6

Product	Test Failed	Description
CS_OFFL_SIR_FDM_1B_20181012T060525_20181012T060913_C001	Echo error, TRK echo error	The tracking echo has returned an error and the Rx1 Echo Error flag is set, indicating a degraded echo
CS_OFFL_SIR_FDM_1B_20181012T154028_20181012T154348_C001	Attitude correction missing	The attitude has not been corrected
CS_OFFL_SIR_FDM_1B_20181012T172002_20181012T172054_C001	Attitude correction missing	The attitude has not been corrected
CS_OFFL_SIR_FDM_1B_20181012T172143_20181012T172321_C001	Echo error, TRK echo error	The tracking echo has returned an error and the Rx1 Echo Error flag is set, indicating a degraded echo
CS_OFFL_SIR_FDM_1B_20181012T185928_20181012T185955_C001	Attitude correction missing	The attitude has not been corrected
CS_OFFL_SIR_FDM_1B_20181012T222256_20181012T222528_C001	Attitude correction missing	The attitude has not been corrected

6. Level 2 FDM Data Quality Check

6.1 L2 FDM Product Format Check

Each product, retrieved and unpacked from the science server, is checked to ensure it consists of both an XML header file (.HDR) and a binary product file (.DBL).

Number of products with errors: 0

6.2 L2 FDM Product Header Analysis

For all products, a series of pre-defined checks are carried out on the MPH and SPH in order to identify any inconsistencies and/or errors raised by the ground-segment processing chain.

Number of products with errors: 0

6.3 L2 FDM Auxiliary Data File Usage Check

Each product is checked for missing Data Set Descriptors with respect to a pre-determined baseline and also to check the validity of Auxiliary Data Files is correct.

Number of products with errors: 0

6.4 L2 FDM Auxiliary Correction Error Check

Each product is checked to detect auxiliary corrections flagged by the ground-station processing chain as missing or containing errors.

Number of products with errors: 32

Product	Test Failed	Description
CS_OFFL_SIR_FDM_2_20181012T003659_20181012T004819_C001	Sea State Bias Correction, Altimetric Wind Speed	There is an error with the Altimetric Wind Speed and Sea State Bias Correction for one or more records
CS_OFFL_SIR_FDM_2_20181012T004942_20181012T005214_C001	Sea State Bias Correction, Altimetric Wind Speed	There is an error with the Altimetric Wind Speed and Sea State Bias Correction for one or more records
CS_OFFL_SIR_FDM_2_20181012T015616_20181012T022939_C001	Sea State Bias Correction, Altimetric Wind Speed	There is an error with the Altimetric Wind Speed and Sea State Bias Correction for one or more records
CS_OFFL_SIR_FDM_2_20181012T025442_20181012T031902_C001	Sea State Bias Correction, Altimetric Wind Speed	There is an error with the Altimetric Wind Speed and Sea State Bias Correction for one or more records
CS_OFFL_SIR_FDM_2_20181012T033509_20181012T034558_C001	Sea State Bias Correction	There is an error with the Sea State Bias Correction for one or more records
CS_OFFL_SIR_FDM_2_20181012T043236_20181012T045827_C001	Sea State Bias Correction, Altimetric Wind Speed	There is an error with the Altimetric Wind Speed and Sea State Bias Correction for one or more records
CS_OFFL_SIR_FDM_2_20181012T051557_20181012T054821_C001	Sea State Bias Correction, Altimetric Wind Speed	There is an error with the Altimetric Wind Speed and Sea State Bias Correction for one or more records
CS_OFFL_SIR_FDM_2_20181012T060013_20181012T060326_C001	Sea State Bias Correction, Altimetric Wind Speed	There is an error with the Altimetric Wind Speed and Sea State Bias Correction for one or more records
CS_OFFL_SIR_FDM_2_20181012T065446_20181012T071533_C001	Sea State Bias Correction	There is an error with the Sea State Bias Correction for one or more records
CS_OFFL_SIR_FDM_2_20181012T071819_20181012T072957_C001	Sea State Bias Correction, Altimetric Wind Speed	There is an error with the Altimetric Wind Speed and Sea State Bias Correction for one or more records
CS_OFFL_SIR_FDM_2_20181012T083329_20181012T083835_C001	Sea State Bias Correction, Altimetric Wind Speed	There is an error with the Altimetric Wind Speed and Sea State Bias Correction for one or more records
CS_OFFL_SIR_FDM_2_20181012T083845_20181012T090946_C001	Sea State Bias Correction, Altimetric Wind Speed	There is an error with the Altimetric Wind Speed and Sea State Bias Correction for one or more records
CS_OFFL_SIR_FDM_2_20181012T092441_20181012T095400_C001	Sea State Bias Correction, Altimetric Wind Speed	There is an error with the Altimetric Wind Speed and Sea State Bias Correction for one or more records
CS_OFFL_SIR_FDM_2_20181012T101303_20181012T102951_C001	Sea State Bias Correction, Altimetric Wind Speed	There is an error with the Altimetric Wind Speed and Sea State Bias Correction for one or more records
CS_OFFL_SIR_FDM_2_20181012T103433_20181012T104143_C001	Sea State Bias Correction, Altimetric Wind Speed	There is an error with the Altimetric Wind Speed and Sea State Bias Correction for one or more records
CS_OFFL_SIR_FDM_2_20181012T110303_20181012T111833_C001	Sea State Bias Correction, Altimetric Wind Speed	There is an error with the Altimetric Wind Speed and Sea State Bias Correction for one or more records
CS_OFFL_SIR_FDM_2_20181012T115221_20181012T120619_C001	Sea State Bias Correction, Altimetric Wind Speed	There is an error with the Altimetric Wind Speed and Sea State Bias Correction for one or more records
CS_OFFL_SIR_FDM_2_20181012T120759_20181012T122341_C001	Sea State Bias Correction, Altimetric Wind Speed	There is an error with the Altimetric Wind Speed and Sea State Bias Correction for one or more records
CS_OFFL_SIR_FDM_2_20181012T124141_20181012T124334_C001	Sea State Bias Correction, Altimetric Wind Speed	There is an error with the Altimetric Wind Speed and Sea State Bias Correction for one or more records
CS_OFFL_SIR_FDM_2_20181012T124453_20181012T125201_C001	Sea State Bias Correction, Altimetric Wind Speed	There is an error with the Altimetric Wind Speed and Sea State Bias Correction for one or more records
CS_OFFL_SIR_FDM_2_20181012T125323_20181012T125633_C001	Sea State Bias Correction, Altimetric Wind Speed	There is an error with the Altimetric Wind Speed and Sea State Bias Correction for one or more records
CS_OFFL_SIR_FDM_2_20181012T141939_20181012T145537_C001	Sea State Bias Correction, Altimetric Wind Speed	There is an error with the Altimetric Wind Speed and Sea State Bias Correction for one or more records
CS_OFFL_SIR_FDM_2_20181012T162405_20181012T163325_C001	Sea State Bias Correction, Altimetric Wind Speed	There is an error with the Altimetric Wind Speed and Sea State Bias Correction for one or more records
CS_OFFL_SIR_FDM_2_20181012T165047_20181012T170818_C001	Sea State Bias Correction, Altimetric Wind Speed	There is an error with the Altimetric Wind Speed and Sea State Bias Correction for one or more records
CS_OFFL_SIR_FDM_2_20181012T174000_20181012T181246_C001	Sea State Bias Correction, Altimetric Wind Speed	There is an error with the Altimetric Wind Speed and Sea State Bias Correction for one or more records
CS_OFFL_SIR_FDM_2_20181012T191753_20181012T192837_C001	Sea State Bias Correction, Altimetric Wind Speed	There is an error with the Altimetric Wind Speed and Sea State Bias Correction for one or more records
CS_OFFL_SIR_FDM_2_20181012T193122_20181012T195241_C001	Sea State Bias Correction, Altimetric Wind Speed	There is an error with the Altimetric Wind Speed and Sea State Bias Correction for one or more records
CS_OFFL_SIR_FDM_2_20181012T202936_20181012T203418_C001	Sea State Bias Correction, Altimetric Wind Speed	There is an error with the Altimetric Wind Speed and Sea State Bias Correction for one or more records
CS_OFFL_SIR_FDM_2_20181012T205620_20181012T213122_C001	Sea State Bias Correction, Altimetric Wind Speed	There is an error with the Altimetric Wind Speed and Sea State Bias Correction for one or more records
CS_OFFL_SIR_FDM_2_20181012T215033_20181012T222121_C001	Sea State Bias Correction, Altimetric Wind Speed	There is an error with the Altimetric Wind Speed and Sea State Bias Correction for one or more records
CS_OFFL_SIR_FDM_2_20181012T223657_20181012T225457_C001	Sea State Bias Correction, Altimetric Wind Speed	There is an error with the Altimetric Wind Speed and Sea State Bias Correction for one or more records
CS_OFFL_SIR_FDM_2_20181012T234430_20181013T000023_C001	Sea State Bias Correction, Altimetric Wind Speed	There is an error with the Altimetric Wind Speed and Sea State Bias Correction for one or more records

6.5 L2 FDM Measurement Confidence Data Check

CryoSat L2 data includes a measurement confidence flag (field 8) for each 20-Hz measurement record. The bit value of this flag indicates any problems when set.

Number of products with errors: 6

Product	Test Failed	Description
CS_OFFL_SIR_FDM_2_20181012T060525_20181012T060913_C001	Echo error	The Echo Rx1 Error flag is set, indicating a degraded raw echo
CS_OFFL_SIR_FDM_2_20181012T154028_20181012T154348_C001	Attitude correction missing	The attitude has not been corrected
CS_OFFL_SIR_FDM_2_20181012T172002_20181012T172054_C001	Attitude correction missing	The attitude has not been corrected
CS_OFFL_SIR_FDM_2_20181012T172143_20181012T172321_C001	Echo error	The Echo Rx1 Error flag is set, indicating a degraded raw echo

CS_OFFL_SIR_FDM_2__20181012T110303_20181012T111833_C001	Ocean Retracking Quality Flag	The Ocean Retracking Quality Flag is set indicating the CFI Ocean Retracker was not successfully executed for one or more records.
CS_OFFL_SIR_FDM_2__20181012T112047_20181012T113552_C001	Ocean Retracking Quality Flag	The Ocean Retracking Quality Flag is set indicating the CFI Ocean Retracker was not successfully executed for one or more records.
CS_OFFL_SIR_FDM_2__20181012T115221_20181012T120619_C001	Ocean Retracking Quality Flag	The Ocean Retracking Quality Flag is set indicating the CFI Ocean Retracker was not successfully executed for one or more records.
CS_OFFL_SIR_FDM_2__20181012T120759_20181012T122341_C001	Ocean Retracking Quality Flag	The Ocean Retracking Quality Flag is set indicating the CFI Ocean Retracker was not successfully executed for one or more records.
CS_OFFL_SIR_FDM_2__20181012T124141_20181012T124334_C001	Ocean Retracking Quality Flag	The Ocean Retracking Quality Flag is set indicating the CFI Ocean Retracker was not successfully executed for one or more records.
CS_OFFL_SIR_FDM_2__20181012T124453_20181012T125201_C001	Ocean Retracking Quality Flag	The Ocean Retracking Quality Flag is set indicating the CFI Ocean Retracker was not successfully executed for one or more records.
CS_OFFL_SIR_FDM_2__20181012T125323_20181012T125633_C001	Ocean Retracking Quality Flag	The Ocean Retracking Quality Flag is set indicating the CFI Ocean Retracker was not successfully executed for one or more records.
CS_OFFL_SIR_FDM_2__20181012T141939_20181012T145537_C001	Ocean Retracking Quality Flag	The Ocean Retracking Quality Flag is set indicating the CFI Ocean Retracker was not successfully executed for one or more records.
CS_OFFL_SIR_FDM_2__20181012T151147_20181012T153615_C001	Ocean Retracking Quality Flag	The Ocean Retracking Quality Flag is set indicating the CFI Ocean Retracker was not successfully executed for one or more records.
CS_OFFL_SIR_FDM_2__20181012T160834_20181012T161828_C001	Ocean Retracking Quality Flag	The Ocean Retracking Quality Flag is set indicating the CFI Ocean Retracker was not successfully executed for one or more records.
CS_OFFL_SIR_FDM_2__20181012T165047_20181012T170818_C001	Ocean Retracking Quality Flag	The Ocean Retracking Quality Flag is set indicating the CFI Ocean Retracker was not successfully executed for one or more records.
CS_OFFL_SIR_FDM_2__20181012T171054_20181012T171757_C001	Ocean Retracking Quality Flag	The Ocean Retracking Quality Flag is set indicating the CFI Ocean Retracker was not successfully executed for one or more records.
CS_OFFL_SIR_FDM_2__20181012T172504_20181012T172605_C001	Ocean Retracking Quality Flag	The Ocean Retracking Quality Flag is set indicating the CFI Ocean Retracker was not successfully executed for one or more records.
CS_OFFL_SIR_FDM_2__20181012T174000_20181012T181246_C001	Ocean Retracking Quality Flag	The Ocean Retracking Quality Flag is set indicating the CFI Ocean Retracker was not successfully executed for one or more records.
CS_OFFL_SIR_FDM_2__20181012T190330_20181012T190732_C001	Ocean Retracking Quality Flag	The Ocean Retracking Quality Flag is set indicating the CFI Ocean Retracker was not successfully executed for one or more records.
CS_OFFL_SIR_FDM_2__20181012T191753_20181012T192837_C001	Ocean Retracking Quality Flag	The Ocean Retracking Quality Flag is set indicating the CFI Ocean Retracker was not successfully executed for one or more records.
CS_OFFL_SIR_FDM_2__20181012T193122_20181012T195241_C001	Ocean Retracking Quality Flag	The Ocean Retracking Quality Flag is set indicating the CFI Ocean Retracker was not successfully executed for one or more records.
CS_OFFL_SIR_FDM_2__20181012T202936_20181012T203418_C001	Ocean Retracking Quality Flag	The Ocean Retracking Quality Flag is set indicating the CFI Ocean Retracker was not successfully executed for one or more records.
CS_OFFL_SIR_FDM_2__20181012T205620_20181012T213122_C001	Ocean Retracking Quality Flag	The Ocean Retracking Quality Flag is set indicating the CFI Ocean Retracker was not successfully executed for one or more records.
CS_OFFL_SIR_FDM_2__20181012T215033_20181012T222121_C001	Ocean Retracking Quality Flag	The Ocean Retracking Quality Flag is set indicating the CFI Ocean Retracker was not successfully executed for one or more records.
CS_OFFL_SIR_FDM_2__20181012T223657_20181012T225457_C001	Ocean Retracking Quality Flag	The Ocean Retracking Quality Flag is set indicating the CFI Ocean Retracker was not successfully executed for one or more records.
CS_OFFL_SIR_FDM_2__20181012T225556_20181012T231048_C001	Ocean Retracking Quality Flag	The Ocean Retracking Quality Flag is set indicating the CFI Ocean Retracker was not successfully executed for one or more records.
CS_OFFL_SIR_FDM_2__20181012T232803_20181012T233810_C001	Ocean Retracking Quality Flag	The Ocean Retracking Quality Flag is set indicating the CFI Ocean Retracker was not successfully executed for one or more records.
CS_OFFL_SIR_FDM_2__20181012T234430_20181013T000023_C001	Ocean Retracking Quality Flag	The Ocean Retracking Quality Flag is set indicating the CFI Ocean Retracker was not successfully executed for one or more records.

7. QCC Report Analysis

The Quality Control for CryoSat (QCC) facility performs a primary survey of data products immediately after production by the PDS and LTA processing facilities. A list of the tests which raised errors or warnings is provided below.

Product type	Nb. Products	Nb. QCC Reports	Nb. Valid	Nb. Warnings	Nb. Errors
SIR_FDM_1B	152	152	152	0	0
SIR_FDM_2	152	152	152	0	0

7.1 QCC Errors

Number of QCC reports with errors: 0

7.2 QCC Warnings

Number of QCC reports with warnings: 0

7.3 Missing QCC Reports

Number of products with missing QCC reports: 0