

### 1. Overview

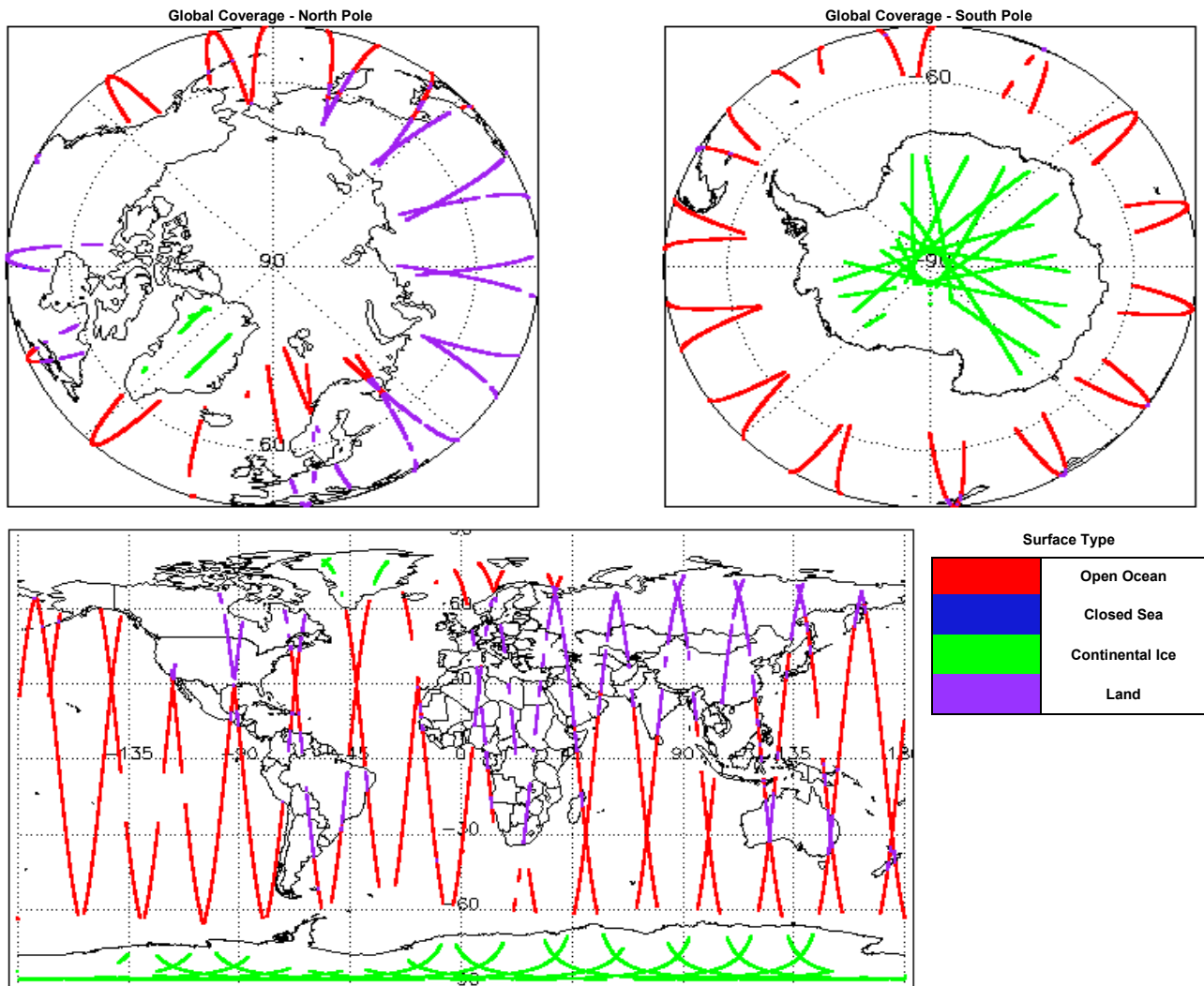
Report Production Date:	06-Jul-2018
Processor Used:	CryoSat Ice Processor
Data Used:	L1 and L2 Fast Delivery Marine (FDM) Mode and L0 Data

Check	Status
Server check: science-pds.cryosat.esa.int	Nominal
Server check: calval-pds.cryosat.esa.int	Nominal
Product Software Check	Nominal
Product Format Check	Nominal
Product Header Analysis	See Section 4.2
Star Tracker Usage Check	See Section 5.3
Calibration Usage Check	Nominal
Auxiliary Data File Usage Check	Nominal
Auxiliary Correction Error Check	See Section 6.4
Measurement Confidence Data Check	See Section 5.7, 6.5, 6.6, 6.7 and 6.8

#### Mission / Instrument News

04-Jul-2018	None
05-Jul-2018	None
06-Jul-2018	Nothing planned

### 2. Global Coverage



### 3. Instrument Configuration

The SIRAL instrument configuration for the day of acquisition is provided below.

SIRAL instrument(s) in use:	SIRAL - A
Star Tracker(s) in use:	Star Tracker 1 & 2

### 4. Level 0 Data Quality Check

#### 4.1 L0 Product Format Check

Each product, retrieved and unpacked from the science server, is checked to ensure it consists of both an XML header file (.HDR) and a binary product file (.DBL).

Number of products with errors: 0

## 4.2 L0 Product Header Analysis

For all products, a series of pre-defined checks are carried out on the MPH and SPH in order to identify any inconsistencies and/or errors raised by the processing chain.

Number of products with errors: 0

## 5. Level 1B FDM Data Quality Check

### 5.1 L1B FDM Product Format Check

Each product, retrieved and unpacked from the science server, is checked to ensure it consists of both an XML header file (.HDR) and a binary product file (.DBL).

Number of products with errors: 0

### 5.2 L1B FDM Product Header Analysis

For all products, a series of pre-defined checks are carried out on the MPH and SPH in order to identify any inconsistencies and/or errors raised by the ground-segment processing chain.

Number of products with errors: 0

### 5.3 L1B FDM Star Tracker Usage Check

Each product is checked in order to ensure a valid star tracker file has been used in processing.

Number of products with errors: 3

Product	Test Failed
CS_OFFL_SIR_FDM_1B_20180705T015832_20180705T020210_C001	No Star Tracker file used in the processing of this product
CS_OFFL_SIR_FDM_1B_20180705T200753_20180705T201351_C001	No Star Tracker file used in the processing of this product
CS_OFFL_SIR_FDM_1B_20180705T232836_20180705T232904_C001	No Star Tracker file used in the processing of this product

### 5.4 L1B FDM Calibration Usage Check

Each product is checked in order to ensure the necessary calibration files have been used in processing.

Number of products with errors: 0

### 5.5 L1B FDM Auxiliary Data File Usage Check

Each product is checked for missing Data Set Descriptors with respect to a pre-determined baseline and also to check the validity of Auxiliary Data Files is correct.

Number of products with errors: 0

### 5.6 L1B FDM Auxiliary Correction Error Check

CryoSat L1B data includes a correction error flag (field 54) for each measurement record. The bit value of this flag indicates any problems when set.

Number of products with errors: 0

### 5.7 L1B FDM Measurement Confidence Data Check

CryoSat L1B data includes a measurement confidence flag (field 18) for each measurement record. The bit value of this flag indicates any problems when set.

Number of products with errors: 6

Product	Test Failed	Description
CS_OFFL_SIR_FDM_1B_20180705T001845_20180705T002013_C001	Echo error, TRK echo error	The tracking echo has returned an error and the Rx1 Echo Error flag is set, indicating a degraded echo
CS_OFFL_SIR_FDM_1B_20180705T015832_20180705T020210_C001	Attitude correction missing	The attitude has not been corrected
CS_OFFL_SIR_FDM_1B_20180705T051719_20180705T051731_C001	Echo error, TRK echo error	The tracking echo has returned an error and the Rx1 Echo Error flag is set, indicating a degraded echo
CS_OFFL_SIR_FDM_1B_20180705T200753_20180705T201351_C001	Attitude correction missing	The attitude has not been corrected
CS_OFFL_SIR_FDM_1B_20180705T215101_20180705T215623_C001	Echo error, TRK echo error	The tracking echo has returned an error and the Rx1 Echo Error flag is set, indicating a degraded echo
CS_OFFL_SIR_FDM_1B_20180705T232836_20180705T232904_C001	Attitude correction missing	The attitude has not been corrected

## 6. Level 2 FDM Data Quality Check

### 6.1 L2 FDM Product Format Check

Each product, retrieved and unpacked from the science server, is checked to ensure it consists of both an XML header file (.HDR) and a binary product file (.DBL).

Number of products with errors: 0

### 6.2 L2 FDM Product Header Analysis

For all products, a series of pre-defined checks are carried out on the MPH and SPH in order to identify any inconsistencies and/or errors raised by the ground-segment processing chain.

Number of products with errors: 0

### 6.3 L2 FDM Auxiliary Data File Usage Check

Each product is checked for missing Data Set Descriptors with respect to a pre-determined baseline and also to check the validity of Auxiliary Data Files is correct.

Number of products with errors: 0

### 6.4 L2 FDM Auxiliary Correction Error Check

Each product is checked to detect auxiliary corrections flagged by the ground-station processing chain as missing or containing errors.

Number of products with errors: 36

Product	Test Failed	Description
CS_OFFL_SIR_FDM_2_20180704T235706_20180705T000657_C001	Sea State Bias Correction, Altimetric Wind Speed	There is an error with the Altimetric Wind Speed and Sea State Bias Correction for one or more records
CS_OFFL_SIR_FDM_2_20180705T002310_20180705T002701_C001	Sea State Bias Correction, Altimetric Wind Speed	There is an error with the Altimetric Wind Speed and Sea State Bias Correction for one or more records

CS_OFFL_SIR_FDM_2__20180705T003758_20180705T004843_C001	Sea State Bias Correction, Altimetric Wind Speed	There is an error with the Altimetric Wind Speed and Sea State Bias Correction for one or more records
CS_OFFL_SIR_FDM_2__20180705T005129_20180705T011235_C001	Sea State Bias Correction, Altimetric Wind Speed	There is an error with the Altimetric Wind Speed and Sea State Bias Correction for one or more records
CS_OFFL_SIR_FDM_2__20180705T012933_20180705T014908_C001	Sea State Bias Correction, Altimetric Wind Speed	There is an error with the Altimetric Wind Speed and Sea State Bias Correction for one or more records
CS_OFFL_SIR_FDM_2__20180705T015003_20180705T015423_C001	Sea State Bias Correction, Altimetric Wind Speed	There is an error with the Altimetric Wind Speed and Sea State Bias Correction for one or more records
CS_OFFL_SIR_FDM_2__20180705T021944_20180705T025145_C001	Sea State Bias Correction, Altimetric Wind Speed	There is an error with the Altimetric Wind Speed and Sea State Bias Correction for one or more records
CS_OFFL_SIR_FDM_2__20180705T040235_20180705T041403_C001	Sea State Bias Correction, Altimetric Wind Speed	There is an error with the Altimetric Wind Speed and Sea State Bias Correction for one or more records
CS_OFFL_SIR_FDM_2__20180705T041606_20180705T043043_C001	Sea State Bias Correction, Altimetric Wind Speed	There is an error with the Altimetric Wind Speed and Sea State Bias Correction for one or more records
CS_OFFL_SIR_FDM_2__20180705T050437_20180705T051610_C001	Sea State Bias Correction, Altimetric Wind Speed	There is an error with the Altimetric Wind Speed and Sea State Bias Correction for one or more records
CS_OFFL_SIR_FDM_2__20180705T055528_20180705T060953_C001	Sea State Bias Correction	There is an error with the Sea State Bias Correction for one or more records
CS_OFFL_SIR_FDM_2__20180705T072501_20180705T074853_C001	Sea State Bias Correction, Altimetric Wind Speed	There is an error with the Altimetric Wind Speed and Sea State Bias Correction for one or more records
CS_OFFL_SIR_FDM_2__20180705T080411_20180705T081722_C001	Sea State Bias Correction, Altimetric Wind Speed	There is an error with the Altimetric Wind Speed and Sea State Bias Correction for one or more records
CS_OFFL_SIR_FDM_2__20180705T082052_20180705T083202_C001	Sea State Bias Correction	There is an error with the Sea State Bias Correction for one or more records
CS_OFFL_SIR_FDM_2__20180705T090406_20180705T092846_C001	Sea State Bias Correction, Altimetric Wind Speed	There is an error with the Altimetric Wind Speed and Sea State Bias Correction for one or more records
CS_OFFL_SIR_FDM_2__20180705T103058_20180705T103359_C001	Sea State Bias Correction, Altimetric Wind Speed	There is an error with the Altimetric Wind Speed and Sea State Bias Correction for one or more records
CS_OFFL_SIR_FDM_2__20180705T110303_20180705T110425_C001	Sea State Bias Correction, Altimetric Wind Speed	There is an error with the Altimetric Wind Speed and Sea State Bias Correction for one or more records
CS_OFFL_SIR_FDM_2__20180705T121136_20180705T121141_C001	Sea State Bias Correction, Altimetric Wind Speed	There is an error with the Altimetric Wind Speed and Sea State Bias Correction for one or more records
CS_OFFL_SIR_FDM_2__20180705T130220_20180705T133829_C001	Sea State Bias Correction, Altimetric Wind Speed	There is an error with the Altimetric Wind Speed and Sea State Bias Correction for one or more records
CS_OFFL_SIR_FDM_2__20180705T140036_20180705T142316_C001	Sea State Bias Correction	There is an error with the Sea State Bias Correction for one or more records
CS_OFFL_SIR_FDM_2__20180705T145017_20180705T145908_C001	Sea State Bias Correction, Altimetric Wind Speed	There is an error with the Altimetric Wind Speed and Sea State Bias Correction for one or more records
CS_OFFL_SIR_FDM_2__20180705T150350_20180705T151814_C001	Sea State Bias Correction, Altimetric Wind Speed	There is an error with the Altimetric Wind Speed and Sea State Bias Correction for one or more records
CS_OFFL_SIR_FDM_2__20180705T155005_20180705T160425_C001	Sea State Bias Correction, Altimetric Wind Speed	There is an error with the Altimetric Wind Speed and Sea State Bias Correction for one or more records
CS_OFFL_SIR_FDM_2__20180705T162110_20180705T163614_C001	Sea State Bias Correction, Altimetric Wind Speed	There is an error with the Altimetric Wind Speed and Sea State Bias Correction for one or more records
CS_OFFL_SIR_FDM_2__20180705T163815_20180705T164738_C001	Sea State Bias Correction, Altimetric Wind Speed	There is an error with the Altimetric Wind Speed and Sea State Bias Correction for one or more records
CS_OFFL_SIR_FDM_2__20180705T171435_20180705T172702_C001	Sea State Bias Correction, Altimetric Wind Speed	There is an error with the Altimetric Wind Speed and Sea State Bias Correction for one or more records
CS_OFFL_SIR_FDM_2__20180705T173229_20180705T174512_C001	Sea State Bias Correction, Altimetric Wind Speed	There is an error with the Altimetric Wind Speed and Sea State Bias Correction for one or more records
CS_OFFL_SIR_FDM_2__20180705T182015_20180705T182453_C001	Sea State Bias Correction	There is an error with the Sea State Bias Correction for one or more records
CS_OFFL_SIR_FDM_2__20180705T185900_20180705T192507_C001	Sea State Bias Correction, Altimetric Wind Speed	There is an error with the Altimetric Wind Speed and Sea State Bias Correction for one or more records
CS_OFFL_SIR_FDM_2__20180705T194040_20180705T200429_C001	Sea State Bias Correction, Altimetric Wind Speed	There is an error with the Altimetric Wind Speed and Sea State Bias Correction for one or more records
CS_OFFL_SIR_FDM_2__20180705T205321_20180705T210350_C001	Sea State Bias Correction	There is an error with the Sea State Bias Correction for one or more records
CS_OFFL_SIR_FDM_2__20180705T211913_20180705T214734_C001	Sea State Bias Correction, Altimetric Wind Speed	There is an error with the Altimetric Wind Speed and Sea State Bias Correction for one or more records
CS_OFFL_SIR_FDM_2__20180705T215101_20180705T215623_C001	Sea State Bias Correction, Altimetric Wind Speed	There is an error with the Altimetric Wind Speed and Sea State Bias Correction for one or more records
CS_OFFL_SIR_FDM_2__20180705T220959_20180705T224230_C001	Sea State Bias Correction, Altimetric Wind Speed	There is an error with the Altimetric Wind Speed and Sea State Bias Correction for one or more records
CS_OFFL_SIR_FDM_2__20180705T233403_20180705T233656_C001	Sea State Bias Correction, Altimetric Wind Speed	There is an error with the Altimetric Wind Speed and Sea State Bias Correction for one or more records
CS_OFFL_SIR_FDM_2__20180705T234853_20180705T235755_C001	Sea State Bias Correction, Altimetric Wind Speed	There is an error with the Altimetric Wind Speed and Sea State Bias Correction for one or more records

## 6.5 L2 FDM Measurement Confidence Data Check

CryoSat L2 data includes a measurement confidence flag (field 8) for each 20-Hz measurement record. The bit value of this flag indicates any problems when set.

**Number of products with errors:** 6

Product	Test Failed	Description
CS_OFFL_SIR_FDM_2__20180705T001845_20180705T002013_C001	Echo error	The Echo Rx1 Error flag is set, indicating a degraded raw echo
CS_OFFL_SIR_FDM_2__20180705T015832_20180705T020210_C001	Attitude correction missing	The attitude has not been corrected
CS_OFFL_SIR_FDM_2__20180705T051719_20180705T051731_C001	Echo error	The Echo Rx1 Error flag is set, indicating a degraded raw echo
CS_OFFL_SIR_FDM_2__20180705T200753_20180705T201351_C001	Attitude correction missing	The attitude has not been corrected
CS_OFFL_SIR_FDM_2__20180705T215101_20180705T215623_C001	Echo error	The Echo Rx1 Error flag is set, indicating a degraded raw echo
CS_OFFL_SIR_FDM_2__20180705T232836_20180705T232904_C001	Attitude correction missing	The attitude has not been corrected

## 6.6 L2 FDM Range Measurement Check

CryoSat L2 data includes a CFI (field 17) and OCOG (field 22) Range Averaging Status flag for each measurement record. The bit value of this flag indicates any problems when set.

**Number of products with errors:** 26

Product	Test Failed	Description
CS_OFFL_SIR_FDM_2__20180704T235706_20180705T000657_C001	CFI Retracked Range Flag	The master fail flag is set by the CFI call, for one or more records, indicating the values stored in fields #13, #14, #15 and #16 should be ignored for these records.
CS_OFFL_SIR_FDM_2__20180705T003758_20180705T004843_C001	CFI Retracked Range Flag	The master fail flag is set by the CFI call, for one or more records, indicating the values stored in fields #13, #14, #15 and #16 should be ignored for these records.
CS_OFFL_SIR_FDM_2__20180705T005129_20180705T011235_C001	CFI Retracked Range Flag	The master fail flag is set by the CFI call, for one or more records, indicating the values stored in fields #13, #14, #15 and #16 should be ignored for these records.
CS_OFFL_SIR_FDM_2__20180705T012933_20180705T014908_C001	CFI Retracked Range Flag	The master fail flag is set by the CFI call, for one or more records, indicating the values stored in fields #13, #14, #15 and #16 should be ignored for these records.





CS_OFFL_SIR_FDM_2__20180705T130220_20180705T133829_C001	Ocean Retracking Quality Flag	The Ocean Retracking Quality Flag is set indicating the CFI Ocean Retracker was not successfully executed for one or more records.
CS_OFFL_SIR_FDM_2__20180705T140036_20180705T142316_C001	Ocean Retracking Quality Flag	The Ocean Retracking Quality Flag is set indicating the CFI Ocean Retracker was not successfully executed for one or more records.
CS_OFFL_SIR_FDM_2__20180705T145017_20180705T145908_C001	Ocean Retracking Quality Flag	The Ocean Retracking Quality Flag is set indicating the CFI Ocean Retracker was not successfully executed for one or more records.
CS_OFFL_SIR_FDM_2__20180705T150350_20180705T151814_C001	Ocean Retracking Quality Flag	The Ocean Retracking Quality Flag is set indicating the CFI Ocean Retracker was not successfully executed for one or more records.
CS_OFFL_SIR_FDM_2__20180705T153116_20180705T154805_C001	Ocean Retracking Quality Flag	The Ocean Retracking Quality Flag is set indicating the CFI Ocean Retracker was not successfully executed for one or more records.
CS_OFFL_SIR_FDM_2__20180705T155005_20180705T160425_C001	Ocean Retracking Quality Flag	The Ocean Retracking Quality Flag is set indicating the CFI Ocean Retracker was not successfully executed for one or more records.
CS_OFFL_SIR_FDM_2__20180705T162110_20180705T163614_C001	Ocean Retracking Quality Flag	The Ocean Retracking Quality Flag is set indicating the CFI Ocean Retracker was not successfully executed for one or more records.
CS_OFFL_SIR_FDM_2__20180705T163815_20180705T164738_C001	Ocean Retracking Quality Flag	The Ocean Retracking Quality Flag is set indicating the CFI Ocean Retracker was not successfully executed for one or more records.
CS_OFFL_SIR_FDM_2__20180705T171435_20180705T172702_C001	Ocean Retracking Quality Flag	The Ocean Retracking Quality Flag is set indicating the CFI Ocean Retracker was not successfully executed for one or more records.
CS_OFFL_SIR_FDM_2__20180705T173229_20180705T174512_C001	Ocean Retracking Quality Flag	The Ocean Retracking Quality Flag is set indicating the CFI Ocean Retracker was not successfully executed for one or more records.
CS_OFFL_SIR_FDM_2__20180705T182015_20180705T182453_C001	Ocean Retracking Quality Flag	The Ocean Retracking Quality Flag is set indicating the CFI Ocean Retracker was not successfully executed for one or more records.
CS_OFFL_SIR_FDM_2__20180705T185900_20180705T192507_C001	Ocean Retracking Quality Flag	The Ocean Retracking Quality Flag is set indicating the CFI Ocean Retracker was not successfully executed for one or more records.
CS_OFFL_SIR_FDM_2__20180705T194040_20180705T200429_C001	Ocean Retracking Quality Flag	The Ocean Retracking Quality Flag is set indicating the CFI Ocean Retracker was not successfully executed for one or more records.
CS_OFFL_SIR_FDM_2__20180705T211913_20180705T214734_C001	Ocean Retracking Quality Flag	The Ocean Retracking Quality Flag is set indicating the CFI Ocean Retracker was not successfully executed for one or more records.
CS_OFFL_SIR_FDM_2__20180705T215101_20180705T215623_C001	Ocean Retracking Quality Flag	The Ocean Retracking Quality Flag is set indicating the CFI Ocean Retracker was not successfully executed for one or more records.
CS_OFFL_SIR_FDM_2__20180705T220959_20180705T224230_C001	Ocean Retracking Quality Flag	The Ocean Retracking Quality Flag is set indicating the CFI Ocean Retracker was not successfully executed for one or more records.
CS_OFFL_SIR_FDM_2__20180705T233344_20180705T233353_C001	Ocean Retracking Quality Flag	The Ocean Retracking Quality Flag is set indicating the CFI Ocean Retracker was not successfully executed for one or more records.
CS_OFFL_SIR_FDM_2__20180705T233403_20180705T233656_C001	Ocean Retracking Quality Flag	The Ocean Retracking Quality Flag is set indicating the CFI Ocean Retracker was not successfully executed for one or more records.
CS_OFFL_SIR_FDM_2__20180705T234853_20180705T235755_C001	Ocean Retracking Quality Flag	The Ocean Retracking Quality Flag is set indicating the CFI Ocean Retracker was not successfully executed for one or more records.

## 7. QCC Report Analysis

The Quality Control for CryoSat (QCC) facility performs a primary survey of data products immediately after production by the PDS and LTA processing facilities. A list of the tests which raised errors or warnings is provided below.

Product type	Nb. Products	Nb. QCC Reports	Nb. Valid	Nb. Warnings	Nb. Errors
SIR_FDM_1B	143	143	143	0	0
SIR_FDM_2	141	141	141	0	0

### 7.1 QCC Errors

Number of QCC reports with errors: 0

### 7.2 QCC Warnings

Number of QCC reports with warnings: 0

### 7.3 Missing QCC Reports

Number of products with missing QCC reports: 0