

1. Overview

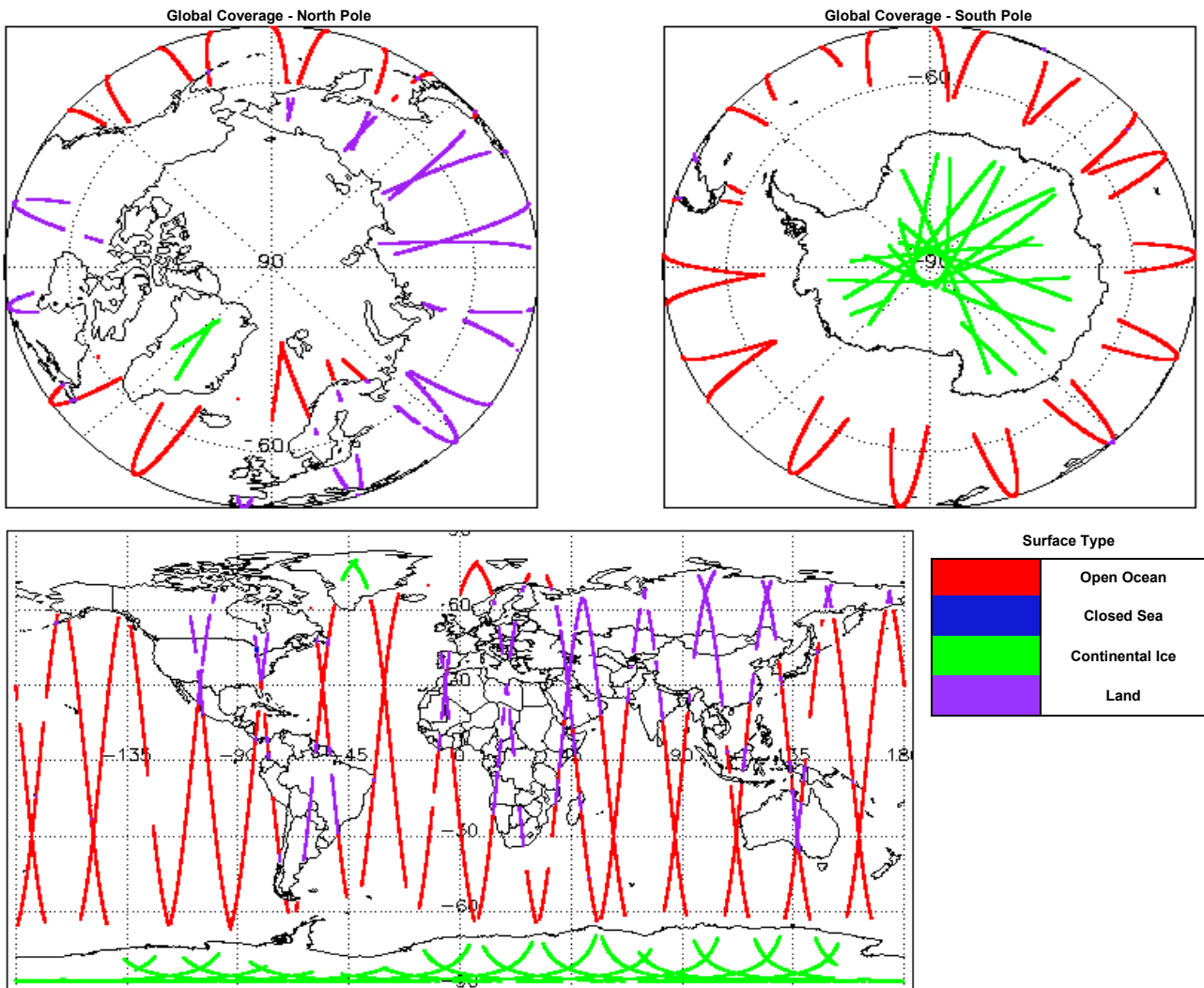
Report Production Date:	14-May-2018
Processor Used:	CryoSat Ice Processor
Data Used:	L1 and L2 Fast Delivery Marine (FDM) Mode and L0 Data

Check	Status
Server check: science-pds.cryosat.esa.int	Nominal
Server check: calval-pds.cryosat.esa.int	Nominal
Product Software Check	Nominal
Product Format Check	Nominal
Product Header Analysis	See Section 4.2
Star Tracker Usage Check	See Section 5.3
Calibration Usage Check	Nominal
Auxiliary Data File Usage Check	Nominal
Auxiliary Correction Error Check	See Section 6.4
Measurement Confidence Data Check	See Section 5.7, 6.5, 6.6, 6.7 and 6.8

Mission / Instrument News

10-May-2018	None
11-May-2018	None
12-May-2018	Nothing planned

2. Global Coverage



3. Instrument Configuration

The SIRAL instrument configuration for the day of acquisition is provided below.

SIRAL instrument(s) in use:	SIRAL - A
Star Tracker(s) in use:	Star Tracker 1

4. Level 0 Data Quality Check

4.1 L0 Product Format Check

Each product, retrieved and unpacked from the science server, is checked to ensure it consists of both an XML header file (.HDR) and a binary product file (.DBL).

Number of products with errors: 0

4.2 L0 Product Header Analysis

For all products, a series of pre-defined checks are carried out on the MPH and SPH in order to identify any inconsistencies and/or errors raised by the processing chain.

Number of products with errors: 10

Product	Test Failed
CS_OPER_SIR1SAR_0__20180511T154746_20180511T155412_0001.HDR	Percentage of processing errors detected greater than minimum acceptable threshold.
CS_OPER_SIR1SAR_0__20180511T221208_20180511T221540_0001.HDR	Percentage of processing errors detected greater than minimum acceptable threshold.
CS_OPER_SIR1SIN_0__20180511T081609_20180511T082303_0001.HDR	Percentage of processing errors detected greater than minimum acceptable threshold.
CS_OPER_SIR1SIN_0__20180511T220420_20180511T220540_0001.HDR	Percentage of processing errors detected greater than minimum acceptable threshold.
CS_OPER_SIR1SIN_0__20180511T054307_20180511T054411_0001.HDR	Percentage of processing errors detected greater than minimum acceptable threshold.
CS_OPER_SIR1SIN_0__20180511T194104_20180511T194713_0001.HDR	Percentage of processing errors detected greater than minimum acceptable threshold.
CS_OPER_SIR2SIN_0__20180511T072110_20180511T072326_0001.HDR	Percentage of processing errors detected greater than minimum acceptable threshold.
CS_OPER_SIR2SIN_0__20180511T102842_20180511T103050_0001.HDR	Percentage of processing errors detected greater than minimum acceptable threshold.
CS_OPER_SIR2SIN_0__20180511T140855_20180511T141018_0001.HDR	Percentage of processing errors detected greater than minimum acceptable threshold.
CS_OPER_SIR2SIN_0__20180511T222004_20180511T222449_0001.HDR	Percentage of processing errors detected greater than minimum acceptable threshold.

5. Level 1B FDM Data Quality Check

5.1 L1B FDM Product Format Check

Each product, retrieved and unpacked from the science server, is checked to ensure it consists of both an XML header file (.HDR) and a binary product file (.DBL).

Number of products with errors: 0

5.2 L1B FDM Product Header Analysis

For all products, a series of pre-defined checks are carried out on the MPH and SPH in order to identify any inconsistencies and/or errors raised by the ground-segment processing chain.

Number of products with errors: 0

5.3 L1B FDM Star Tracker Usage Check

Each product is checked in order to ensure a valid star tracker file has been used in processing.

Number of products with errors: 4

Product	Test Failed
CS_OFFL_SIR_FDM_1B_20180511T021600_20180511T021627_C001	No Star Tracker file used in the processing of this product
CS_OFFL_SIR_FDM_1B_20180511T054008_20180511T054028_C001	No Star Tracker file used in the processing of this product
CS_OFFL_SIR_FDM_1B_20180511T221117_20180511T221203_C001	No Star Tracker file used in the processing of this product
CS_OFFL_SIR_FDM_1B_20180511T234511_20180511T234804_C001	No Star Tracker file used in the processing of this product

5.4 L1B FDM Calibration Usage Check

Each product is checked in order to ensure the necessary calibration files have been used in processing.

Number of products with errors: 0

5.5 L1B FDM Auxiliary Data File Usage Check

Each product is checked for missing Data Set Descriptors with respect to a pre-determined baseline and also to check the validity of Auxiliary Data Files is correct.

Number of products with errors: 0

5.6 L1B FDM Auxiliary Correction Error Check

CryoSat L1B data includes a correction error flag (field 54) for each measurement record. The bit value of this flag indicates any problems when set.

Number of products with errors: 0

5.7 L1B FDM Measurement Confidence Data Check

CryoSat L1B data includes a measurement confidence flag (field 18) for each measurement record. The bit value of this flag indicates any problems when set.

Number of products with errors: 4

Product	Test Failed	Description
CS_OFFL_SIR_FDM_1B_20180511T021600_20180511T021627_C001	Attitude correction missing	The attitude has not been corrected
CS_OFFL_SIR_FDM_1B_20180511T054008_20180511T054028_C001	Attitude correction missing	The attitude has not been corrected
CS_OFFL_SIR_FDM_1B_20180511T221117_20180511T221203_C001	Attitude correction missing	The attitude has not been corrected
CS_OFFL_SIR_FDM_1B_20180511T234511_20180511T234804_C001	Attitude correction missing	The attitude has not been corrected

6. Level 2 FDM Data Quality Check

6.1 L2 FDM Product Format Check

Each product, retrieved and unpacked from the science server, is checked to ensure it consists of both an XML header file (.HDR) and a binary product file (.DBL).

Number of products with errors: 0

6.2 L2 FDM Product Header Analysis

For all products, a series of pre-defined checks are carried out on the MPH and SPH in order to identify any inconsistencies and/or errors raised by the ground-segment processing chain.

Number of products with errors: 0

6.3 L2 FDM Auxiliary Data File Usage Check

Each product is checked for missing Data Set Descriptors with respect to a pre-determined baseline and also to check the validity of Auxiliary Data Files is correct.

Number of products with errors: 0

6.4 L2 FDM Auxiliary Correction Error Check

Each product is checked to detect auxiliary corrections flagged by the ground-station processing chain as missing or containing errors.

Product	Test Failed	Description
CS_OFFL_SIR_FDM_2__20180511T000600_20180511T003456_C001	Sea State Bias Correction, Altimetric Wind Speed	There is an error with the Altimetric Wind Speed and Sea State Bias Correction for one or more records
CS_OFFL_SIR_FDM_2__20180511T004217_20180511T004350_C001	Sea State Bias Correction, Altimetric Wind Speed	There is an error with the Altimetric Wind Speed and Sea State Bias Correction for one or more records
CS_OFFL_SIR_FDM_2__20180511T005722_20180511T013036_C001	Sea State Bias Correction	There is an error with the Sea State Bias Correction for one or more records
CS_OFFL_SIR_FDM_2__20180511T023617_20180511T024522_C001	Sea State Bias Correction, Altimetric Wind Speed	There is an error with the Altimetric Wind Speed and Sea State Bias Correction for one or more records
CS_OFFL_SIR_FDM_2__20180511T024807_20180511T031021_C001	Sea State Bias Correction, Altimetric Wind Speed	There is an error with the Altimetric Wind Speed and Sea State Bias Correction for one or more records
CS_OFFL_SIR_FDM_2__20180511T040114_20180511T040116_C001	Sea State Bias Correction, Altimetric Wind Speed	There is an error with the Altimetric Wind Speed and Sea State Bias Correction for one or more records
CS_OFFL_SIR_FDM_2__20180511T041507_20180511T044836_C001	Sea State Bias Correction, Altimetric Wind Speed	There is an error with the Altimetric Wind Speed and Sea State Bias Correction for one or more records
CS_OFFL_SIR_FDM_2__20180511T050721_20180511T053843_C001	Sea State Bias Correction	There is an error with the Sea State Bias Correction for one or more records
CS_OFFL_SIR_FDM_2__20180511T061202_20180511T062807_C001	Sea State Bias Correction, Altimetric Wind Speed	There is an error with the Altimetric Wind Speed and Sea State Bias Correction for one or more records
CS_OFFL_SIR_FDM_2__20180511T070111_20180511T071350_C001	Sea State Bias Correction, Altimetric Wind Speed	There is an error with the Altimetric Wind Speed and Sea State Bias Correction for one or more records
CS_OFFL_SIR_FDM_2__20180511T071708_20180511T071712_C001	Sea State Bias Correction, Altimetric Wind Speed	There is an error with the Altimetric Wind Speed and Sea State Bias Correction for one or more records
CS_OFFL_SIR_FDM_2__20180511T074038_20180511T075102_C001	Sea State Bias Correction, Altimetric Wind Speed	There is an error with the Altimetric Wind Speed and Sea State Bias Correction for one or more records
CS_OFFL_SIR_FDM_2__20180511T082303_20180511T082414_C001	Sea State Bias Correction, Altimetric Wind Speed	There is an error with the Altimetric Wind Speed and Sea State Bias Correction for one or more records
CS_OFFL_SIR_FDM_2__20180511T082841_20180511T083536_C001	Sea State Bias Correction, Altimetric Wind Speed	There is an error with the Altimetric Wind Speed and Sea State Bias Correction for one or more records
CS_OFFL_SIR_FDM_2__20180511T084000_20180511T084449_C001	Sea State Bias Correction, Altimetric Wind Speed	There is an error with the Altimetric Wind Speed and Sea State Bias Correction for one or more records
CS_OFFL_SIR_FDM_2__20180511T092358_20180511T094540_C001	Sea State Bias Correction	There is an error with the Sea State Bias Correction for one or more records
CS_OFFL_SIR_FDM_2__20180511T110039_20180511T112549_C001	Sea State Bias Correction, Altimetric Wind Speed	There is an error with the Altimetric Wind Speed and Sea State Bias Correction for one or more records
CS_OFFL_SIR_FDM_2__20180511T115638_20180511T121253_C001	Sea State Bias Correction, Altimetric Wind Speed	There is an error with the Altimetric Wind Speed and Sea State Bias Correction for one or more records
CS_OFFL_SIR_FDM_2__20180511T123726_20180511T125552_C001	Sea State Bias Correction, Altimetric Wind Speed	There is an error with the Altimetric Wind Speed and Sea State Bias Correction for one or more records
CS_OFFL_SIR_FDM_2__20180511T140619_20180511T140710_C001	Sea State Bias Correction, Altimetric Wind Speed	There is an error with the Altimetric Wind Speed and Sea State Bias Correction for one or more records
CS_OFFL_SIR_FDM_2__20180511T142812_20180511T144415_C001	Sea State Bias Correction, Altimetric Wind Speed	There is an error with the Altimetric Wind Speed and Sea State Bias Correction for one or more records
CS_OFFL_SIR_FDM_2__20180511T155618_20180511T160128_C001	Sea State Bias Correction, Altimetric Wind Speed	There is an error with the Altimetric Wind Speed and Sea State Bias Correction for one or more records
CS_OFFL_SIR_FDM_2__20180511T163830_20180511T171115_C001	Sea State Bias Correction, Altimetric Wind Speed	There is an error with the Altimetric Wind Speed and Sea State Bias Correction for one or more records
CS_OFFL_SIR_FDM_2__20180511T172701_20180511T175903_C001	Sea State Bias Correction, Altimetric Wind Speed	There is an error with the Altimetric Wind Speed and Sea State Bias Correction for one or more records
CS_OFFL_SIR_FDM_2__20180511T181734_20180511T183259_C001	Sea State Bias Correction, Altimetric Wind Speed	There is an error with the Altimetric Wind Speed and Sea State Bias Correction for one or more records
CS_OFFL_SIR_FDM_2__20180511T183353_20180511T183437_C001	Sea State Bias Correction, Altimetric Wind Speed	There is an error with the Altimetric Wind Speed and Sea State Bias Correction for one or more records
CS_OFFL_SIR_FDM_2__20180511T183447_20180511T184547_C001	Sea State Bias Correction, Altimetric Wind Speed	There is an error with the Altimetric Wind Speed and Sea State Bias Correction for one or more records
CS_OFFL_SIR_FDM_2__20180511T190733_20180511T192341_C001	Sea State Bias Correction, Altimetric Wind Speed	There is an error with the Altimetric Wind Speed and Sea State Bias Correction for one or more records
CS_OFFL_SIR_FDM_2__20180511T201304_20180511T201547_C001	Sea State Bias Correction, Altimetric Wind Speed	There is an error with the Altimetric Wind Speed and Sea State Bias Correction for one or more records
CS_OFFL_SIR_FDM_2__20180511T204955_20180511T205545_C001	Sea State Bias Correction, Altimetric Wind Speed	There is an error with the Altimetric Wind Speed and Sea State Bias Correction for one or more records
CS_OFFL_SIR_FDM_2__20180511T213630_20180511T220101_C001	Sea State Bias Correction	There is an error with the Sea State Bias Correction for one or more records
CS_OFFL_SIR_FDM_2__20180511T221117_20180511T221203_C001	Sea State Bias Correction	There is an error with the Sea State Bias Correction for one or more records
CS_OFFL_SIR_FDM_2__20180511T223305_20180511T230058_C001	Sea State Bias Correction, Altimetric Wind Speed	There is an error with the Altimetric Wind Speed and Sea State Bias Correction for one or more records
CS_OFFL_SIR_FDM_2__20180511T231543_20180511T233917_C001	Sea State Bias Correction, Altimetric Wind Speed	There is an error with the Altimetric Wind Speed and Sea State Bias Correction for one or more records
CS_OFFL_SIR_FDM_2__20180511T233921_20180511T234245_C001	Sea State Bias Correction, Altimetric Wind Speed	There is an error with the Altimetric Wind Speed and Sea State Bias Correction for one or more records

6.5 L2 FDM Measurement Confidence Data Check

CryoSat L2 data includes a measurement confidence flag (field 8) for each 20-Hz measurement record. The bit value of this flag indicates any problems when set.

Number of products with errors:

4

Product	Test Failed	Description
CS_OFFL_SIR_FDM_2__20180511T021600_20180511T021627_C001	Attitude correction missing	The attitude has not been corrected
CS_OFFL_SIR_FDM_2__20180511T054008_20180511T054028_C001	Attitude correction missing	The attitude has not been corrected
CS_OFFL_SIR_FDM_2__20180511T221117_20180511T221203_C001	Attitude correction missing	The attitude has not been corrected
CS_OFFL_SIR_FDM_2__20180511T234511_20180511T234804_C001	Attitude correction missing	The attitude has not been corrected

6.6 L2 FDM Range Measurement Check

CryoSat L2 data includes a CFI (field 17) and OCOG (field 22) Range Averaging Status flag for each measurement record. The bit value of this flag indicates any problems when set.

Number of products with errors:

23

Product	Test Failed	Description
CS_OFFL_SIR_FDM_2__20180511T000600_20180511T003456_C001	CFI Retracked Range Flag	The master fail flag is set by the CFI call, for one or more records, indicating the values stored in fields #13, #14, #15 and #16 should be ignored for these records.
CS_OFFL_SIR_FDM_2__20180511T004217_20180511T004350_C001	CFI Retracked Range Flag	The master fail flag is set by the CFI call, for one or more records, indicating the values stored in fields #13, #14, #15 and #16 should be ignored for these records.
CS_OFFL_SIR_FDM_2__20180511T023617_20180511T024522_C001	CFI Retracked Range Flag	The master fail flag is set by the CFI call, for one or more records, indicating the values stored in fields #13, #14, #15 and #16 should be ignored for these records.

CS_OFFL_SIR_FDM_2__20180511T172701_20180511T175903_C001	Ocean Retracking Quality Flag	The Ocean Retracking Quality Flag is set indicating the CFI Ocean Retracker was not successfully executed for one or more records.
CS_OFFL_SIR_FDM_2__20180511T181734_20180511T183259_C001	Ocean Retracking Quality Flag	The Ocean Retracking Quality Flag is set indicating the CFI Ocean Retracker was not successfully executed for one or more records.
CS_OFFL_SIR_FDM_2__20180511T183353_20180511T183437_C001	Ocean Retracking Quality Flag	The Ocean Retracking Quality Flag is set indicating the CFI Ocean Retracker was not successfully executed for one or more records.
CS_OFFL_SIR_FDM_2__20180511T183447_20180511T184547_C001	Ocean Retracking Quality Flag	The Ocean Retracking Quality Flag is set indicating the CFI Ocean Retracker was not successfully executed for one or more records.
CS_OFFL_SIR_FDM_2__20180511T190733_20180511T192341_C001	Ocean Retracking Quality Flag	The Ocean Retracking Quality Flag is set indicating the CFI Ocean Retracker was not successfully executed for one or more records.
CS_OFFL_SIR_FDM_2__20180511T195711_20180511T201124_C001	Ocean Retracking Quality Flag	The Ocean Retracking Quality Flag is set indicating the CFI Ocean Retracker was not successfully executed for one or more records.
CS_OFFL_SIR_FDM_2__20180511T201304_20180511T201547_C001	Ocean Retracking Quality Flag	The Ocean Retracking Quality Flag is set indicating the CFI Ocean Retracker was not successfully executed for one or more records.
CS_OFFL_SIR_FDM_2__20180511T204955_20180511T205545_C001	Ocean Retracking Quality Flag	The Ocean Retracking Quality Flag is set indicating the CFI Ocean Retracker was not successfully executed for one or more records.
CS_OFFL_SIR_FDM_2__20180511T205829_20180511T212209_C001	Ocean Retracking Quality Flag	The Ocean Retracking Quality Flag is set indicating the CFI Ocean Retracker was not successfully executed for one or more records.
CS_OFFL_SIR_FDM_2__20180511T213630_20180511T220101_C001	Ocean Retracking Quality Flag	The Ocean Retracking Quality Flag is set indicating the CFI Ocean Retracker was not successfully executed for one or more records.
CS_OFFL_SIR_FDM_2__20180511T221117_20180511T221203_C001	Ocean Retracking Quality Flag	The Ocean Retracking Quality Flag is set indicating the CFI Ocean Retracker was not successfully executed for one or more records.
CS_OFFL_SIR_FDM_2__20180511T223305_20180511T230058_C001	Ocean Retracking Quality Flag	The Ocean Retracking Quality Flag is set indicating the CFI Ocean Retracker was not successfully executed for one or more records.
CS_OFFL_SIR_FDM_2__20180511T231543_20180511T233917_C001	Ocean Retracking Quality Flag	The Ocean Retracking Quality Flag is set indicating the CFI Ocean Retracker was not successfully executed for one or more records.
CS_OFFL_SIR_FDM_2__20180511T233921_20180511T234245_C001	Ocean Retracking Quality Flag	The Ocean Retracking Quality Flag is set indicating the CFI Ocean Retracker was not successfully executed for one or more records.

7. QCC Report Analysis

The Quality Control for CryoSat (QCC) facility performs a primary survey of data products immediately after production by the PDS and LTA processing facilities. A list of the tests which raised errors or warnings is provided below.

Product type	No. Products	No. QCC Reports	No. Valid	No. Warnings	No. Errors
SIR1LRM_0_	147	147	147	0	0
SIR1SAR_0_	111	111	111	0	0
SIR1SIN_0_	103	103	103	0	0
SIR2SIN_0_	110	110	110	0	0
SIR_FDM_1B	147	147	147	0	0
SIR_FDM_2	144	144	144	0	0

7.1 QCC Errors

Number of QCC reports with errors: 0

7.2 QCC Warnings

Number of QCC reports with warnings: 0

7.3 Missing QCC Reports

Number of products with missing QCC reports: 0