

1. Overview

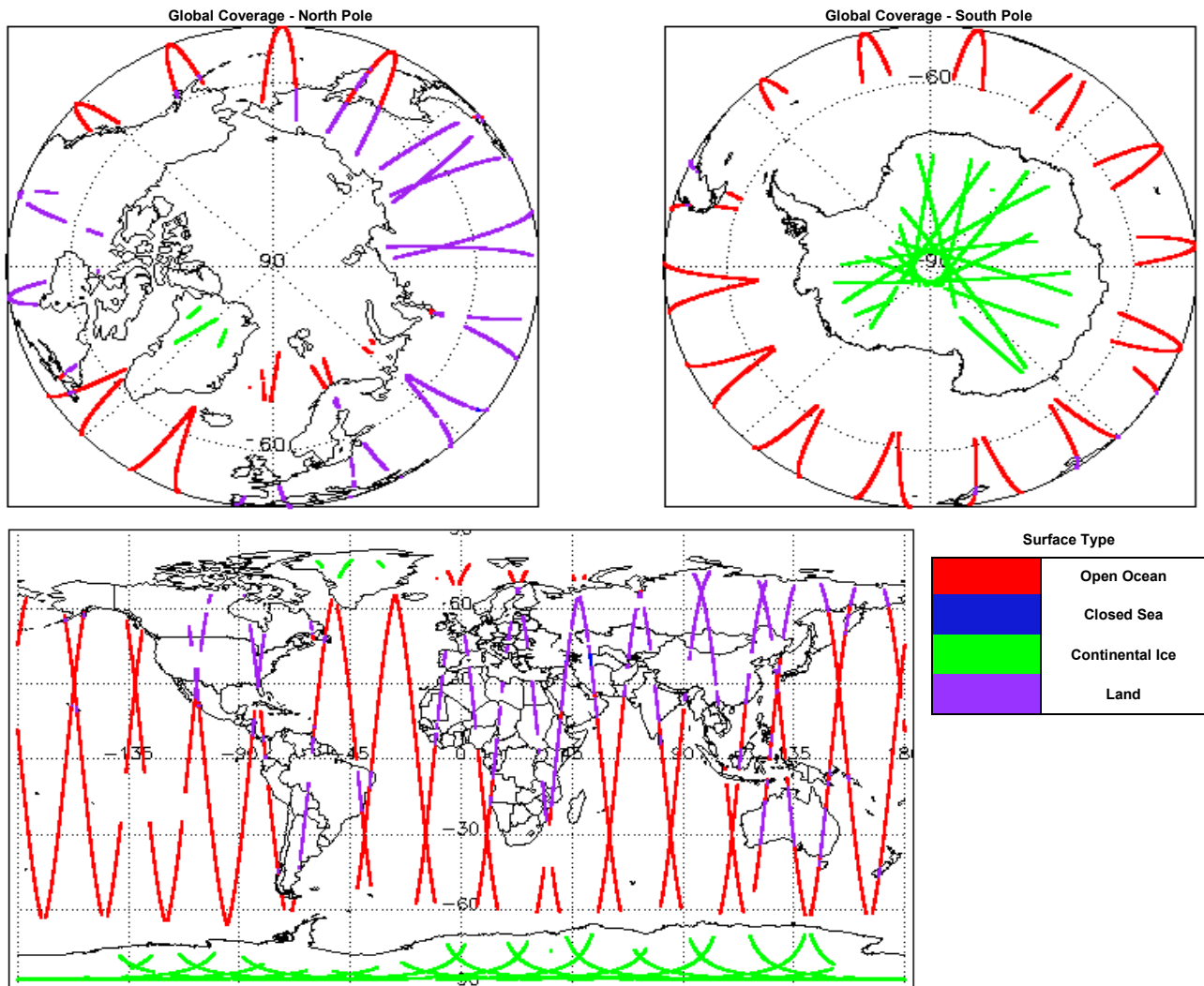
Report Production Date:	12-Jun-2017
Processor Used:	CryoSat Ice Processor
Data Used:	L1 and L2 Fast Delivery Marine (FDM) Mode and L0 Data

Check	Status
Server check: science-pds.cryosat.esa.int	Nominal
Server check: calval-pds.cryosat.esa.int	Nominal
Product Software Check	Nominal
Product Format Check	Nominal
Product Header Analysis	See Section 4.2
Star Tracker Usage Check	See Section 5.3
Calibration Usage Check	Nominal
Auxiliary Data File Usage Check	Nominal
Auxiliary Correction Error Check	See Section 6.4
Measurement Confidence Data Check	See Section 5.7, 6.5, 6.6, 6.7 and 6.8

Mission / Instrument News

09-Jun-2017	None
10-Jun-2017	None
11-Jun-2017	Nothing planned

2. Global Coverage



3. Instrument Configuration

The SIRAL instrument configuration for the day of acquisition is provided below.

SIRAL instrument(s) in use:	SIRAL - A
Star Tracker(s) in use:	Star Tracker 1 & 2

4. Level 0 Data Quality Check

4.1 L0 Product Format Check

Each product, retrieved and unpacked from the science server, is checked to ensure it consists of both an XML header file (.HDR) and a binary product file (.DBL).

Number of products with errors: 0

4.2 L0 Product Header Analysis

For all products, a series of pre-defined checks are carried out on the MPH and SPH in order to identify any inconsistencies and/or errors raised by the processing chain.

Number of products with errors: 5

Product	Test Failed
CS_OPER_SIR1SAR_0__20170610T114026_20170610T114526_0001.HDR	Percentage of processing errors detected greater than minimum acceptable threshold.
CS_OPER_SIR1SIN_0__20170610T020355_20170610T020756_0001.HDR	Percentage of processing errors detected greater than minimum acceptable threshold.
CS_OPER_SIR1SIN_0__20170610T122656_20170610T123258_0001.HDR	Percentage of processing errors detected greater than minimum acceptable threshold.
CS_OPER_SIR2SIN_0__20170610T110130_20170610T110259_0001.HDR	Percentage of processing errors detected greater than minimum acceptable threshold.
CS_OPER_SIR2SIN_0__20170610T045909_20170610T050313_0001.HDR	Percentage of processing errors detected greater than minimum acceptable threshold.

5. Level 1B FDM Data Quality Check

5.1 L1B FDM Product Format Check

Each product, retrieved and unpacked from the science server, is checked to ensure it consists of both an XML header file (.HDR) and a binary product file (.DBL).

Number of products with errors: 0

5.2 L1B FDM Product Header Analysis

For all products, a series of pre-defined checks are carried out on the MPH and SPH in order to identify any inconsistencies and/or errors raised by the ground-segment processing chain.

Number of products with errors: 0

5.3 L1B FDM Star Tracker Usage Check

Each product is checked in order to ensure a valid star tracker file has been used in processing.

Number of products with errors: 4

Product	Test Failed
CS_OFFL_SIR_FDM_1B_20170610T145709_20170610T145731_C001	No Star Tracker file used in the processing of this product
CS_OFFL_SIR_FDM_1B_20170610T163129_20170610T163337_C001	No Star Tracker file used in the processing of this product
CS_OFFL_SIR_FDM_1B_20170610T181004_20170610T181123_C001	No Star Tracker file used in the processing of this product
CS_OFFL_SIR_FDM_1B_20170610T210027_20170610T213322_C001	No Star Tracker file used in the processing of this product

5.4 L1B FDM Calibration Usage Check

Each product is checked in order to ensure the necessary calibration files have been used in processing.

Number of products with errors: 0

5.5 L1B FDM Auxiliary Data File Usage Check

Each product is checked for missing Data Set Descriptors with respect to a pre-determined baseline and also to check the validity of Auxiliary Data Files is correct.

Number of products with errors: 0

5.6 L1B FDM Auxiliary Correction Error Check

CryoSat L1B data includes a correction error flag (field 54) for each measurement record. The bit value of this flag indicates any problems when set.

Number of products with errors: 0

5.7 L1B FDM Measurement Confidence Data Check

CryoSat L1B data includes a measurement confidence flag (field 18) for each measurement record. The bit value of this flag indicates any problems when set.

Number of products with errors: 4

Product	Test Failed	Description
CS_OFFL_SIR_FDM_1B_20170610T145709_20170610T145731_C001	Attitude correction missing	The attitude has not been corrected
CS_OFFL_SIR_FDM_1B_20170610T163129_20170610T163337_C001	Attitude correction missing	The attitude has not been corrected
CS_OFFL_SIR_FDM_1B_20170610T181004_20170610T181123_C001	Attitude correction missing	The attitude has not been corrected
CS_OFFL_SIR_FDM_1B_20170610T210027_20170610T213322_C001	Attitude correction missing	The attitude has not been corrected

6. Level 2 FDM Data Quality Check

6.1 L2 FDM Product Format Check

Each product, retrieved and unpacked from the science server, is checked to ensure it consists of both an XML header file (.HDR) and a binary product file (.DBL).

Number of products with errors: 0

6.2 L2 FDM Product Header Analysis

For all products, a series of pre-defined checks are carried out on the MPH and SPH in order to identify any inconsistencies and/or errors raised by the ground-segment processing chain.

Number of products with errors: 0

6.3 L2 FDM Auxiliary Data File Usage Check

Each product is checked for missing Data Set Descriptors with respect to a pre-determined baseline and also to check the validity of Auxiliary Data Files is correct.

Number of products with errors: 0

CS_OFFL_SIR_FDM_2_20170610T181004_20170610T181123_C001	Attitude correction missing	The attitude has not been corrected
CS_OFFL_SIR_FDM_2_20170610T210027_20170610T213322_C001	Attitude correction missing	The attitude has not been corrected

6.6 L2 FDM Range Measurement Check

CryoSat L2 data includes a CFI (field 17) and OCOG (field 22) Range Averaging Status flag for each measurement record. The bit value of this flag indicates any problems when set.

Number of products with errors: 27

Product	Test Failed	Description
CS_OFFL_SIR_FDM_2_20170610T011254_20170610T012236_C001	CFI Retracked Range Flag	The master fail flag is set by the CFI call, for one or more records, indicating the values stored in fields #13, #14, #15 and #16 should be ignored for these records.
CS_OFFL_SIR_FDM_2_20170610T012540_20170610T013042_C001	CFI Retracked Range Flag	The master fail flag is set by the CFI call, for one or more records, indicating the values stored in fields #13, #14, #15 and #16 should be ignored for these records.
CS_OFFL_SIR_FDM_2_20170610T020930_20170610T023108_C001	CFI Retracked Range Flag	The master fail flag is set by the CFI call, for one or more records, indicating the values stored in fields #13, #14, #15 and #16 should be ignored for these records.
CS_OFFL_SIR_FDM_2_20170610T033540_20170610T033619_C001	CFI Retracked Range Flag	The master fail flag is set by the CFI call, for one or more records, indicating the values stored in fields #13, #14, #15 and #16 should be ignored for these records.
CS_OFFL_SIR_FDM_2_20170610T034609_20170610T041102_C001	CFI Retracked Range Flag	The master fail flag is set by the CFI call, for one or more records, indicating the values stored in fields #13, #14, #15 and #16 should be ignored for these records.
CS_OFFL_SIR_FDM_2_20170610T052746_20170610T053136_C001	CFI Retracked Range Flag	The master fail flag is set by the CFI call, for one or more records, indicating the values stored in fields #13, #14, #15 and #16 should be ignored for these records.
CS_OFFL_SIR_FDM_2_20170610T053139_20170610T054038_C001	CFI Retracked Range Flag	The master fail flag is set by the CFI call, for one or more records, indicating the values stored in fields #13, #14, #15 and #16 should be ignored for these records.
CS_OFFL_SIR_FDM_2_20170610T060601_20170610T063854_C001	CFI Retracked Range Flag	The master fail flag is set by the CFI call, for one or more records, indicating the values stored in fields #13, #14, #15 and #16 should be ignored for these records.
CS_OFFL_SIR_FDM_2_20170610T071422_20170610T072855_C001	CFI Retracked Range Flag	The master fail flag is set by the CFI call, for one or more records, indicating the values stored in fields #13, #14, #15 and #16 should be ignored for these records.
CS_OFFL_SIR_FDM_2_20170610T084909_20170610T090745_C001	CFI Retracked Range Flag	The master fail flag is set by the CFI call, for one or more records, indicating the values stored in fields #13, #14, #15 and #16 should be ignored for these records.
CS_OFFL_SIR_FDM_2_20170610T092442_20170610T100050_C001	CFI Retracked Range Flag	The master fail flag is set by the CFI call, for one or more records, indicating the values stored in fields #13, #14, #15 and #16 should be ignored for these records.
CS_OFFL_SIR_FDM_2_20170610T101302_20170610T103213_C001	CFI Retracked Range Flag	The master fail flag is set by the CFI call, for one or more records, indicating the values stored in fields #13, #14, #15 and #16 should be ignored for these records.
CS_OFFL_SIR_FDM_2_20170610T110345_20170610T111851_C001	CFI Retracked Range Flag	The master fail flag is set by the CFI call, for one or more records, indicating the values stored in fields #13, #14, #15 and #16 should be ignored for these records.
CS_OFFL_SIR_FDM_2_20170610T112054_20170610T113036_C001	CFI Retracked Range Flag	The master fail flag is set by the CFI call, for one or more records, indicating the values stored in fields #13, #14, #15 and #16 should be ignored for these records.
CS_OFFL_SIR_FDM_2_20170610T115250_20170610T120931_C001	CFI Retracked Range Flag	The master fail flag is set by the CFI call, for one or more records, indicating the values stored in fields #13, #14, #15 and #16 should be ignored for these records.
CS_OFFL_SIR_FDM_2_20170610T134420_20170610T140746_C001	CFI Retracked Range Flag	The master fail flag is set by the CFI call, for one or more records, indicating the values stored in fields #13, #14, #15 and #16 should be ignored for these records.
CS_OFFL_SIR_FDM_2_20170610T142256_20170610T144720_C001	CFI Retracked Range Flag	The master fail flag is set by the CFI call, for one or more records, indicating the values stored in fields #13, #14, #15 and #16 should be ignored for these records.
CS_OFFL_SIR_FDM_2_20170610T145731_20170610T145745_C001	CFI Retracked Range Flag	The master fail flag is set by the CFI call, for one or more records, indicating the values stored in fields #13, #14, #15 and #16 should be ignored for these records.
CS_OFFL_SIR_FDM_2_20170610T160151_20170610T162819_C001	CFI Retracked Range Flag	The master fail flag is set by the CFI call, for one or more records, indicating the values stored in fields #13, #14, #15 and #16 should be ignored for these records.
CS_OFFL_SIR_FDM_2_20170610T171457_20170610T172515_C001	CFI Retracked Range Flag	The master fail flag is set by the CFI call, for one or more records, indicating the values stored in fields #13, #14, #15 and #16 should be ignored for these records.
CS_OFFL_SIR_FDM_2_20170610T183109_20170610T190441_C001	CFI Retracked Range Flag	The master fail flag is set by the CFI call, for one or more records, indicating the values stored in fields #13, #14, #15 and #16 should be ignored for these records.
CS_OFFL_SIR_FDM_2_20170610T200847_20170610T203827_C001	CFI Retracked Range Flag	The master fail flag is set by the CFI call, for one or more records, indicating the values stored in fields #13, #14, #15 and #16 should be ignored for these records.
CS_OFFL_SIR_FDM_2_20170610T214653_20170610T220531_C001	CFI Retracked Range Flag	The master fail flag is set by the CFI call, for one or more records, indicating the values stored in fields #13, #14, #15 and #16 should be ignored for these records.
CS_OFFL_SIR_FDM_2_20170610T220542_20170610T220820_C001	CFI Retracked Range Flag	The master fail flag is set by the CFI call, for one or more records, indicating the values stored in fields #13, #14, #15 and #16 should be ignored for these records.
CS_OFFL_SIR_FDM_2_20170610T220825_20170610T222246_C001	CFI Retracked Range Flag	The master fail flag is set by the CFI call, for one or more records, indicating the values stored in fields #13, #14, #15 and #16 should be ignored for these records.
CS_OFFL_SIR_FDM_2_20170610T233353_20170610T234459_C001	CFI Retracked Range Flag	The master fail flag is set by the CFI call, for one or more records, indicating the values stored in fields #13, #14, #15 and #16 should be ignored for these records.
CS_OFFL_SIR_FDM_2_20170610T234702_20170611T000142_C001	CFI Retracked Range Flag	The master fail flag is set by the CFI call, for one or more records, indicating the values stored in fields #13, #14, #15 and #16 should be ignored for these records.

6.7 L2 FDM SWH and Backscatter Measurement Check

CryoSat L2 data includes a SWH-Squared Averaging Status flag (field 39) and an CFI (field 45) and OCOG (field 51) Backscatter Averaging Status flag for each measurement record. The bit value of this flag indicates any problems when set.

Number of products with errors: 27

Product	Test Failed	Description
CS_OFFL_SIR_FDM_2_20170610T011254_20170610T012236_C001	CFI Backscatter Status Flag, SWH Squared Averaging Status Flag	The master fail flag is set by the CFI call, for one or more records, indicating the values stored in fields #41, #42, #43 and #44 should be ignored for these records.

CS_OFFL_SIR_FDM_2__20170610T053139_20170610T054038_C001	Ocean Retracking Quality Flag	The Ocean Retracking Quality Flag is set indicating the CFI Ocean Retracker was not successfully executed for one or more records.
CS_OFFL_SIR_FDM_2__20170610T060601_20170610T063854_C001	Ocean Retracking Quality Flag	The Ocean Retracking Quality Flag is set indicating the CFI Ocean Retracker was not successfully executed for one or more records.
CS_OFFL_SIR_FDM_2__20170610T071422_20170610T072855_C001	Ocean Retracking Quality Flag	The Ocean Retracking Quality Flag is set indicating the CFI Ocean Retracker was not successfully executed for one or more records.
CS_OFFL_SIR_FDM_2__20170610T080914_20170610T082054_C001	Ocean Retracking Quality Flag	The Ocean Retracking Quality Flag is set indicating the CFI Ocean Retracker was not successfully executed for one or more records.
CS_OFFL_SIR_FDM_2__20170610T084909_20170610T090745_C001	Ocean Retracking Quality Flag	The Ocean Retracking Quality Flag is set indicating the CFI Ocean Retracker was not successfully executed for one or more records.
CS_OFFL_SIR_FDM_2__20170610T092442_20170610T100050_C001	Ocean Retracking Quality Flag	The Ocean Retracking Quality Flag is set indicating the CFI Ocean Retracker was not successfully executed for one or more records.
CS_OFFL_SIR_FDM_2__20170610T101302_20170610T103213_C001	Ocean Retracking Quality Flag	The Ocean Retracking Quality Flag is set indicating the CFI Ocean Retracker was not successfully executed for one or more records.
CS_OFFL_SIR_FDM_2__20170610T103230_20170610T104519_C001	Ocean Retracking Quality Flag	The Ocean Retracking Quality Flag is set indicating the CFI Ocean Retracker was not successfully executed for one or more records.
CS_OFFL_SIR_FDM_2__20170610T110345_20170610T111851_C001	Ocean Retracking Quality Flag	The Ocean Retracking Quality Flag is set indicating the CFI Ocean Retracker was not successfully executed for one or more records.
CS_OFFL_SIR_FDM_2__20170610T112054_20170610T113036_C001	Ocean Retracking Quality Flag	The Ocean Retracking Quality Flag is set indicating the CFI Ocean Retracker was not successfully executed for one or more records.
CS_OFFL_SIR_FDM_2__20170610T115250_20170610T120931_C001	Ocean Retracking Quality Flag	The Ocean Retracking Quality Flag is set indicating the CFI Ocean Retracker was not successfully executed for one or more records.
CS_OFFL_SIR_FDM_2__20170610T124317_20170610T125718_C001	Ocean Retracking Quality Flag	The Ocean Retracking Quality Flag is set indicating the CFI Ocean Retracker was not successfully executed for one or more records.
CS_OFFL_SIR_FDM_2__20170610T134420_20170610T140746_C001	Ocean Retracking Quality Flag	The Ocean Retracking Quality Flag is set indicating the CFI Ocean Retracker was not successfully executed for one or more records.
CS_OFFL_SIR_FDM_2__20170610T142256_20170610T144720_C001	Ocean Retracking Quality Flag	The Ocean Retracking Quality Flag is set indicating the CFI Ocean Retracker was not successfully executed for one or more records.
CS_OFFL_SIR_FDM_2__20170610T145731_20170610T145745_C001	Ocean Retracking Quality Flag	The Ocean Retracking Quality Flag is set indicating the CFI Ocean Retracker was not successfully executed for one or more records.
CS_OFFL_SIR_FDM_2__20170610T152104_20170610T153222_C001	Ocean Retracking Quality Flag	The Ocean Retracking Quality Flag is set indicating the CFI Ocean Retracker was not successfully executed for one or more records.
CS_OFFL_SIR_FDM_2__20170610T160151_20170610T162819_C001	Ocean Retracking Quality Flag	The Ocean Retracking Quality Flag is set indicating the CFI Ocean Retracker was not successfully executed for one or more records.
CS_OFFL_SIR_FDM_2__20170610T165356_20170610T170925_C001	Ocean Retracking Quality Flag	The Ocean Retracking Quality Flag is set indicating the CFI Ocean Retracker was not successfully executed for one or more records.
CS_OFFL_SIR_FDM_2__20170610T171457_20170610T172515_C001	Ocean Retracking Quality Flag	The Ocean Retracking Quality Flag is set indicating the CFI Ocean Retracker was not successfully executed for one or more records.
CS_OFFL_SIR_FDM_2__20170610T183109_20170610T190441_C001	Ocean Retracking Quality Flag	The Ocean Retracking Quality Flag is set indicating the CFI Ocean Retracker was not successfully executed for one or more records.
CS_OFFL_SIR_FDM_2__20170610T200847_20170610T203827_C001	Ocean Retracking Quality Flag	The Ocean Retracking Quality Flag is set indicating the CFI Ocean Retracker was not successfully executed for one or more records.
CS_OFFL_SIR_FDM_2__20170610T203838_20170610T204328_C001	Ocean Retracking Quality Flag	The Ocean Retracking Quality Flag is set indicating the CFI Ocean Retracker was not successfully executed for one or more records.
CS_OFFL_SIR_FDM_2__20170610T210027_20170610T213322_C001	Ocean Retracking Quality Flag	The Ocean Retracking Quality Flag is set indicating the CFI Ocean Retracker was not successfully executed for one or more records.
CS_OFFL_SIR_FDM_2__20170610T214653_20170610T220531_C001	Ocean Retracking Quality Flag	The Ocean Retracking Quality Flag is set indicating the CFI Ocean Retracker was not successfully executed for one or more records.
CS_OFFL_SIR_FDM_2__20170610T220542_20170610T220820_C001	Ocean Retracking Quality Flag	The Ocean Retracking Quality Flag is set indicating the CFI Ocean Retracker was not successfully executed for one or more records.
CS_OFFL_SIR_FDM_2__20170610T220825_20170610T222246_C001	Ocean Retracking Quality Flag	The Ocean Retracking Quality Flag is set indicating the CFI Ocean Retracker was not successfully executed for one or more records.
CS_OFFL_SIR_FDM_2__20170610T224136_20170610T225401_C001	Ocean Retracking Quality Flag	The Ocean Retracking Quality Flag is set indicating the CFI Ocean Retracker was not successfully executed for one or more records.
CS_OFFL_SIR_FDM_2__20170610T233353_20170610T234459_C001	Ocean Retracking Quality Flag	The Ocean Retracking Quality Flag is set indicating the CFI Ocean Retracker was not successfully executed for one or more records.
CS_OFFL_SIR_FDM_2__20170610T234702_20170611T000142_C001	Ocean Retracking Quality Flag	The Ocean Retracking Quality Flag is set indicating the CFI Ocean Retracker was not successfully executed for one or more records.

7. QCC Report Analysis

The Quality Control for CryoSat (QCC) facility performs a primary survey of data products immediately after production by the PDS and LTA processing facilities. A list of the tests which raised errors or warnings is provided below.

Product type	Nb. Products	Nb. QCC Reports	Nb. Valid	Nb. Warnings	Nb. Errors
SIR1LRM_0_	139	139	139	0	0
SIR1SAR_0_	112	112	112	0	0
SIR1SIN_0_	110	110	110	0	0
SIR2SIN_0_	116	116	116	0	0
SIR_FDM_1B	139	139	139	0	0
SIR_FDM_2	139	139	139	0	0

7.1 QCC Errors

Number of QCC reports with errors: 0

7.2 QCC Warnings

Number of QCC reports with warnings: 0

7.3 Missing QCC Reports

Number of products with missing QCC reports: 0