

**1. Overview**

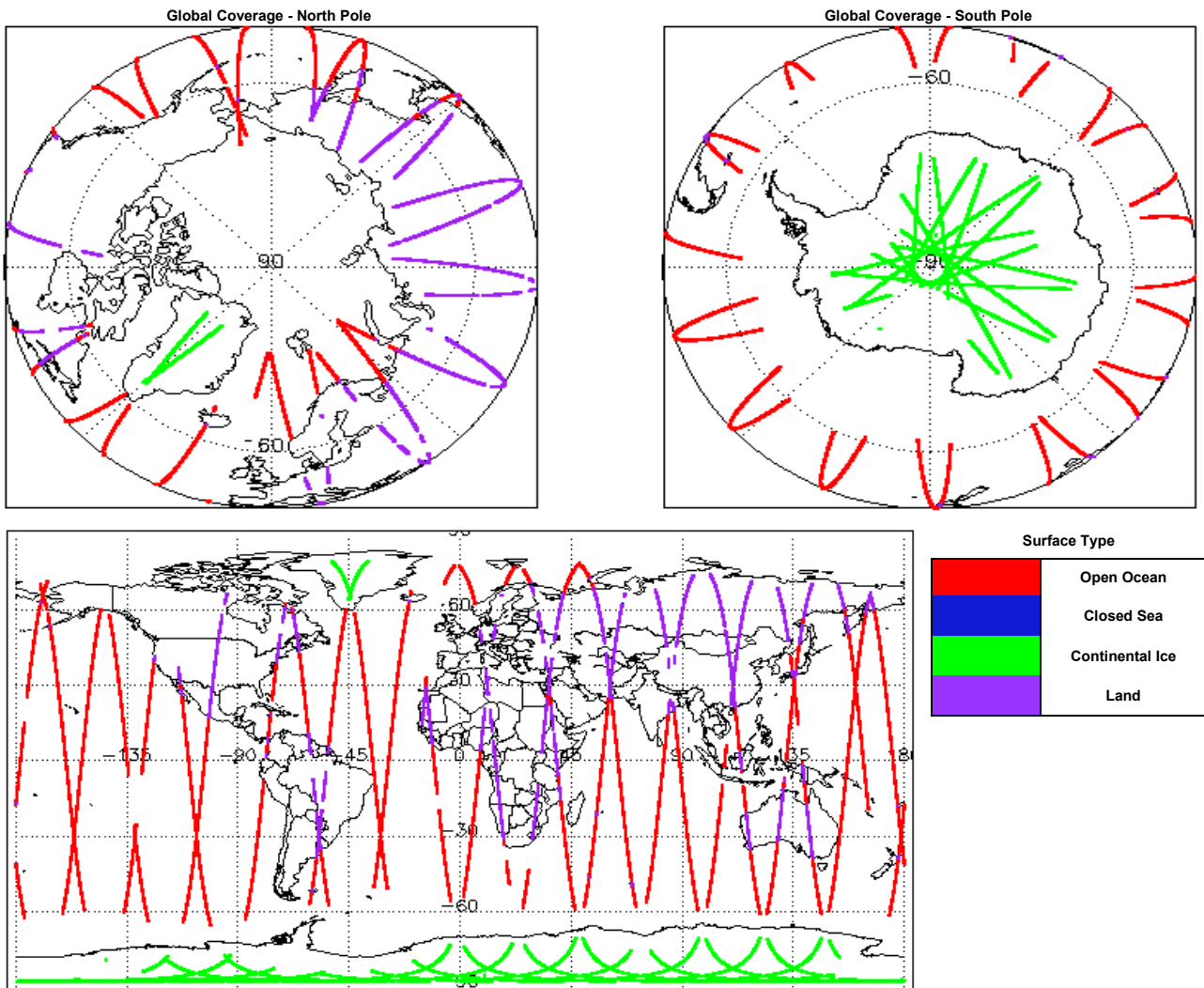
<b>Report Production Date:</b>	17-Aug-2016
<b>Processor Used:</b>	CryoSat Ice Processor
<b>Data Used:</b>	L1 and L2 Fast Delivery Marine (FDM) Mode and L0 Data

Check	Status
Server check: science-pds.cryosat.esa.int	Nominal
Server check: calval-pds.cryosat.esa.int	Nominal
Product Software Check	Nominal
Product Format Check	Nominal
Product Header Analysis	See Section 4.2
Star Tracker Usage Check	See Section 5.3
Calibration Usage Check	Nominal
Auxiliary Data File Usage Check	Nominal
Auxiliary Correction Error Check	See Section 6.4
Measurement Confidence Data Check	See Section 5.7, 6.5, 6.6, 6.7 and 6.8

**Mission / Instrument News**

14-Aug-2016	None
15-Aug-2016	HKTM and STR data missing between 115738 and 182623
16-Aug-2016	Nothing planned

**2. Global Coverage**



**3. Instrument Configuration**

The SIRAL instrument configuration for the day of acquisition is provided below.

<b>SIRAL instrument(s) in use:</b>	SIRAL - A
<b>Star Tracker(s) in use:</b>	Star Tracker 1 & 2

**4. Level 0 Data Quality Check**

**4.1 L0 Product Format Check**

Each product, retrieved and unpacked from the science server, is checked to ensure it consists of both an XML header file (.HDR) and a binary product file (.DBL).

Number of products with errors: 0

**4.2 L0 Product Header Analysis**

For all products, a series of pre-defined checks are carried out on the MPH and SPH in order to identify any inconsistencies and/or errors raised by the processing chain.

Number of products with errors: 5

Product	Test Failed
CS_OPER_SIR1LRM_0_20160815T184835_20160815T192146_0002.DBL	Percentage of processing errors detected greater than minimum acceptable threshold.
CS_OPER_SIR1SAR_0_20160815T192146_20160815T192336_0001.HDR	Percentage of processing errors detected greater than minimum acceptable threshold.
CS_OPER_SIR1SAR_0_20160815T010801_20160815T011500_0001.HDR	Percentage of processing errors detected greater than minimum acceptable threshold.
CS_OPER_SIR1SIN_0_20160815T151822_20160815T152035_0001.HDR	Percentage of processing errors detected greater than minimum acceptable threshold.
CS_OPER_SIR1SIN_0_20160815T070332_20160815T070348_0001.HDR	Percentage of processing errors detected greater than minimum acceptable threshold.

## 5. Level 1B FDM Data Quality Check

### 5.1 L1B FDM Product Format Check

Each product, retrieved and unpacked from the science server, is checked to ensure it consists of both an XML header file (.HDR) and a binary product file (.DBL).

Number of products with errors: 0

### 5.2 L1B FDM Product Header Analysis

For all products, a series of pre-defined checks are carried out on the MPH and SPH in order to identify any inconsistencies and/or errors raised by the ground-segment processing chain.

Number of products with errors: 0

### 5.3 L1B FDM Star Tracker Usage Check

Each product is checked in order to ensure a valid star tracker file has been used in processing.

Number of products with errors: 39

Product	Test Failed
CS_OFFL_SIR_FDM_1B_20160815T065424_20160815T065728_C001	No Star Tracker file used in the processing of this product
CS_OFFL_SIR_FDM_1B_20160815T083350_20160815T083444_C001	No Star Tracker file used in the processing of this product
CS_OFFL_SIR_FDM_1B_20160815T101300_20160815T101356_C001	No Star Tracker file used in the processing of this product
CS_OFFL_SIR_FDM_1B_20160815T115738_20160815T115751_C001	No Star Tracker file used in the processing of this product
CS_OFFL_SIR_FDM_1B_20160815T121022_20160815T124524_C001	No Star Tracker file used in the processing of this product
CS_OFFL_SIR_FDM_1B_20160815T124815_20160815T125333_C001	No Star Tracker file used in the processing of this product
CS_OFFL_SIR_FDM_1B_20160815T125339_20160815T125345_C001	No Star Tracker file used in the processing of this product
CS_OFFL_SIR_FDM_1B_20160815T125353_20160815T125636_C001	No Star Tracker file used in the processing of this product
CS_OFFL_SIR_FDM_1B_20160815T130433_20160815T133440_C001	No Star Tracker file used in the processing of this product
CS_OFFL_SIR_FDM_1B_20160815T133618_20160815T134026_C001	No Star Tracker file used in the processing of this product
CS_OFFL_SIR_FDM_1B_20160815T134840_20160815T135510_C001	No Star Tracker file used in the processing of this product
CS_OFFL_SIR_FDM_1B_20160815T135533_20160815T140754_C001	No Star Tracker file used in the processing of this product
CS_OFFL_SIR_FDM_1B_20160815T140959_20160815T142448_C001	No Star Tracker file used in the processing of this product
CS_OFFL_SIR_FDM_1B_20160815T142730_20160815T143230_C001	No Star Tracker file used in the processing of this product
CS_OFFL_SIR_FDM_1B_20160815T143237_20160815T143244_C001	No Star Tracker file used in the processing of this product
CS_OFFL_SIR_FDM_1B_20160815T143250_20160815T143302_C001	No Star Tracker file used in the processing of this product
CS_OFFL_SIR_FDM_1B_20160815T143309_20160815T143432_C001	No Star Tracker file used in the processing of this product
CS_OFFL_SIR_FDM_1B_20160815T144156_20160815T145208_C001	No Star Tracker file used in the processing of this product
CS_OFFL_SIR_FDM_1B_20160815T145315_20160815T145538_C001	No Star Tracker file used in the processing of this product
CS_OFFL_SIR_FDM_1B_20160815T145827_20160815T151432_C001	No Star Tracker file used in the processing of this product
CS_OFFL_SIR_FDM_1B_20160815T152734_20160815T154110_C001	No Star Tracker file used in the processing of this product
CS_OFFL_SIR_FDM_1B_20160815T154535_20160815T154755_C001	No Star Tracker file used in the processing of this product
CS_OFFL_SIR_FDM_1B_20160815T154957_20160815T160321_C001	No Star Tracker file used in the processing of this product
CS_OFFL_SIR_FDM_1B_20160815T160642_20160815T161141_C001	No Star Tracker file used in the processing of this product
CS_OFFL_SIR_FDM_1B_20160815T161148_20160815T161200_C001	No Star Tracker file used in the processing of this product
CS_OFFL_SIR_FDM_1B_20160815T161206_20160815T161215_C001	No Star Tracker file used in the processing of this product
CS_OFFL_SIR_FDM_1B_20160815T161223_20160815T161329_C001	No Star Tracker file used in the processing of this product
CS_OFFL_SIR_FDM_1B_20160815T161939_20160815T164105_C001	No Star Tracker file used in the processing of this product
CS_OFFL_SIR_FDM_1B_20160815T164107_20160815T165504_C001	No Star Tracker file used in the processing of this product
CS_OFFL_SIR_FDM_1B_20160815T170606_20160815T171354_C001	No Star Tracker file used in the processing of this product
CS_OFFL_SIR_FDM_1B_20160815T171504_20160815T171551_C001	No Star Tracker file used in the processing of this product
CS_OFFL_SIR_FDM_1B_20160815T171955_20160815T174203_C001	No Star Tracker file used in the processing of this product
CS_OFFL_SIR_FDM_1B_20160815T174727_20160815T175057_C001	No Star Tracker file used in the processing of this product
CS_OFFL_SIR_FDM_1B_20160815T175105_20160815T175114_C001	No Star Tracker file used in the processing of this product
CS_OFFL_SIR_FDM_1B_20160815T175120_20160815T175448_C001	No Star Tracker file used in the processing of this product
CS_OFFL_SIR_FDM_1B_20160815T175811_20160815T182344_C001	No Star Tracker file used in the processing of this product
CS_OFFL_SIR_FDM_1B_20160815T182347_20160815T182349_C001	No Star Tracker file used in the processing of this product
CS_OFFL_SIR_FDM_1B_20160815T182355_20160815T182541_C001	No Star Tracker file used in the processing of this product
CS_OFFL_SIR_FDM_1B_20160815T182548_20160815T182623_C001	No Star Tracker file used in the processing of this product

### 5.4 L1B FDM Calibration Usage Check

Each product is checked in order to ensure the necessary calibration files have been used in processing.

Number of products with errors: 0

## 5.5 L1B FDM Auxiliary Data File Usage Check

Each product is checked for missing Data Set Descriptors with respect to a pre-determined baseline and also to check the validity of Auxiliary Data Files is correct.

Number of products with errors: 0

## 5.6 L1B FDM Auxiliary Correction Error Check

CryoSat L1B data includes a correction error flag (field 54) for each measurement record. The bit value of this flag indicates any problems when set.

Number of products with errors: 0

## 5.7 L1B FDM Measurement Confidence Data Check

CryoSat L1B data includes a measurement confidence flag (field 18) for each measurement record. The bit value of this flag indicates any problems when set.

Number of products with errors: 41

Product	Test Failed	Description
CS_OFFL_SIR_FDM_1B_20160815T053600_20160815T060939_C001	Echo error, TRK echo error	The tracking echo has returned an error and the Rx1 Echo Error flag is set, indicating a degraded echo
CS_OFFL_SIR_FDM_1B_20160815T065424_20160815T065728_C001	Attitude correction missing	The attitude has not been corrected
CS_OFFL_SIR_FDM_1B_20160815T083350_20160815T083444_C001	Attitude correction missing	The attitude has not been corrected
CS_OFFL_SIR_FDM_1B_20160815T101300_20160815T101356_C001	Attitude correction missing	The attitude has not been corrected
CS_OFFL_SIR_FDM_1B_20160815T115738_20160815T115751_C001	Attitude correction missing	The attitude has not been corrected
CS_OFFL_SIR_FDM_1B_20160815T121022_20160815T124524_C001	Attitude correction missing	The attitude has not been corrected
CS_OFFL_SIR_FDM_1B_20160815T124815_20160815T125333_C001	Attitude correction missing	The attitude has not been corrected
CS_OFFL_SIR_FDM_1B_20160815T125339_20160815T125345_C001	Attitude correction missing	The attitude has not been corrected
CS_OFFL_SIR_FDM_1B_20160815T125353_20160815T125636_C001	Attitude correction missing	The attitude has not been corrected
CS_OFFL_SIR_FDM_1B_20160815T130433_20160815T133440_C001	Attitude correction missing	The attitude has not been corrected
CS_OFFL_SIR_FDM_1B_20160815T133618_20160815T134026_C001	Attitude correction missing	The attitude has not been corrected
CS_OFFL_SIR_FDM_1B_20160815T134840_20160815T135510_C001	Attitude correction missing	The attitude has not been corrected
CS_OFFL_SIR_FDM_1B_20160815T135533_20160815T140754_C001	Attitude correction missing	The attitude has not been corrected
CS_OFFL_SIR_FDM_1B_20160815T140959_20160815T142448_C001	Attitude correction missing	The attitude has not been corrected
CS_OFFL_SIR_FDM_1B_20160815T142730_20160815T143230_C001	Attitude correction missing	The attitude has not been corrected
CS_OFFL_SIR_FDM_1B_20160815T143237_20160815T143244_C001	Attitude correction missing	The attitude has not been corrected
CS_OFFL_SIR_FDM_1B_20160815T143250_20160815T143302_C001	Attitude correction missing	The attitude has not been corrected
CS_OFFL_SIR_FDM_1B_20160815T143309_20160815T143432_C001	Attitude correction missing	The attitude has not been corrected
CS_OFFL_SIR_FDM_1B_20160815T144156_20160815T145208_C001	Attitude correction missing	The attitude has not been corrected
CS_OFFL_SIR_FDM_1B_20160815T145315_20160815T145538_C001	Attitude correction missing	The attitude has not been corrected
CS_OFFL_SIR_FDM_1B_20160815T145827_20160815T151432_C001	Attitude correction missing	The attitude has not been corrected
CS_OFFL_SIR_FDM_1B_20160815T152734_20160815T154110_C001	Attitude correction missing	The attitude has not been corrected
CS_OFFL_SIR_FDM_1B_20160815T154535_20160815T154755_C001	Attitude correction missing	The attitude has not been corrected
CS_OFFL_SIR_FDM_1B_20160815T154957_20160815T160321_C001	Attitude correction missing	The attitude has not been corrected
CS_OFFL_SIR_FDM_1B_20160815T160642_20160815T161141_C001	Attitude correction missing	The attitude has not been corrected
CS_OFFL_SIR_FDM_1B_20160815T161148_20160815T161200_C001	Attitude correction missing	The attitude has not been corrected
CS_OFFL_SIR_FDM_1B_20160815T161206_20160815T161215_C001	Attitude correction missing	The attitude has not been corrected
CS_OFFL_SIR_FDM_1B_20160815T161223_20160815T161329_C001	Attitude correction missing	The attitude has not been corrected
CS_OFFL_SIR_FDM_1B_20160815T161939_20160815T164105_C001	Attitude correction missing	The attitude has not been corrected
CS_OFFL_SIR_FDM_1B_20160815T164107_20160815T165504_C001	Attitude correction missing	The attitude has not been corrected
CS_OFFL_SIR_FDM_1B_20160815T170606_20160815T171354_C001	Attitude correction missing	The attitude has not been corrected
CS_OFFL_SIR_FDM_1B_20160815T171504_20160815T171551_C001	Attitude correction missing	The attitude has not been corrected
CS_OFFL_SIR_FDM_1B_20160815T171955_20160815T174203_C001	Attitude correction missing	The attitude has not been corrected
CS_OFFL_SIR_FDM_1B_20160815T174727_20160815T175057_C001	Attitude correction missing	The attitude has not been corrected
CS_OFFL_SIR_FDM_1B_20160815T175105_20160815T175114_C001	Attitude correction missing	The attitude has not been corrected
CS_OFFL_SIR_FDM_1B_20160815T175120_20160815T175448_C001	Attitude correction missing	The attitude has not been corrected
CS_OFFL_SIR_FDM_1B_20160815T175811_20160815T182344_C001	Attitude correction missing	The attitude has not been corrected
CS_OFFL_SIR_FDM_1B_20160815T182347_20160815T182349_C001	Attitude correction missing	The attitude has not been corrected
CS_OFFL_SIR_FDM_1B_20160815T182355_20160815T182541_C001	Attitude correction missing	The attitude has not been corrected
CS_OFFL_SIR_FDM_1B_20160815T182548_20160815T182623_C001	Attitude correction missing	The attitude has not been corrected
CS_OFFL_SIR_FDM_1B_20160815T184835_20160815T192146_C002	Echo error, TRK echo error	The tracking echo has returned an error and the Rx1 Echo Error flag is set, indicating a degraded echo

## 6. Level 2 FDM Data Quality Check

### 6.1 L2 FDM Product Format Check

Each product, retrieved and unpacked from the science server, is checked to ensure it consists of both an XML header file (.HDR) and a binary product file (.DBL).

Number of products with errors: 0

### 6.2 L2 FDM Product Header Analysis

For all products, a series of pre-defined checks are carried out on the MPH and SPH in order to identify any inconsistencies and/or errors raised by the ground-segment processing chain.

Number of products with errors: 0

### 6.3 L2 FDM Auxiliary Data File Usage Check

Each product is checked for missing Data Set Descriptors with respect to a pre-determined baseline and also to check the validity of Auxiliary Data Files is correct.

Number of products with errors: 0

### 6.4 L2 FDM Auxiliary Correction Error Check

Each product is checked to detect auxiliary corrections flagged by the ground-station processing chain as missing or containing errors.

Number of products with errors: 39

Product	Test Failed	Description
CS_OFFL_SIR_FDM_2__20160814T235227_20160815T002402_C001	Sea State Bias Correction, Altimetric Wind Speed	There is an error with the Altimetric Wind Speed and Sea State Bias Correction for one or more records
CS_OFFL_SIR_FDM_2__20160815T003642_20160815T004342_C001	Sea State Bias Correction, Altimetric Wind Speed	There is an error with the Altimetric Wind Speed and Sea State Bias Correction for one or more records
CS_OFFL_SIR_FDM_2__20160815T012705_20160815T014349_C001	Sea State Bias Correction, Altimetric Wind Speed	There is an error with the Altimetric Wind Speed and Sea State Bias Correction for one or more records
CS_OFFL_SIR_FDM_2__20160815T014753_20160815T015523_C001	Sea State Bias Correction, Altimetric Wind Speed	There is an error with the Altimetric Wind Speed and Sea State Bias Correction for one or more records
CS_OFFL_SIR_FDM_2__20160815T021655_20160815T023234_C001	Sea State Bias Correction, Mean Sea Surface height, Altimetric Wind Speed	There is an error with the Altimetric Wind Speed, the Sea State Bias Correction and the Mean Sea Surface Height for one or more records
CS_OFFL_SIR_FDM_2__20160815T023853_20160815T024909_C001	Sea State Bias Correction, Altimetric Wind Speed	There is an error with the Altimetric Wind Speed and Sea State Bias Correction for one or more records
CS_OFFL_SIR_FDM_2__20160815T030625_20160815T032017_C001	Sea State Bias Correction	There is an error with the Sea State Bias Correction for one or more records
CS_OFFL_SIR_FDM_2__20160815T032157_20160815T033257_C001	Sea State Bias Correction	There is an error with the Sea State Bias Correction for one or more records
CS_OFFL_SIR_FDM_2__20160815T035850_20160815T040600_C001	Sea State Bias Correction, Altimetric Wind Speed	There is an error with the Altimetric Wind Speed and Sea State Bias Correction for one or more records
CS_OFFL_SIR_FDM_2__20160815T040723_20160815T041211_C001	Sea State Bias Correction, Altimetric Wind Speed	There is an error with the Altimetric Wind Speed and Sea State Bias Correction for one or more records
CS_OFFL_SIR_FDM_2__20160815T044608_20160815T050842_C001	Sea State Bias Correction	There is an error with the Sea State Bias Correction for one or more records
CS_OFFL_SIR_FDM_2__20160815T053600_20160815T060939_C001	Sea State Bias Correction, Altimetric Wind Speed	There is an error with the Altimetric Wind Speed and Sea State Bias Correction for one or more records
CS_OFFL_SIR_FDM_2__20160815T062539_20160815T065318_C001	Sea State Bias Correction, Altimetric Wind Speed	There is an error with the Altimetric Wind Speed and Sea State Bias Correction for one or more records
CS_OFFL_SIR_FDM_2__20160815T065728_20160815T070058_C001	Sea State Bias Correction, Altimetric Wind Speed	There is an error with the Altimetric Wind Speed and Sea State Bias Correction for one or more records
CS_OFFL_SIR_FDM_2__20160815T080431_20160815T082348_C002	Sea State Bias Correction, Altimetric Wind Speed	There is an error with the Altimetric Wind Speed and Sea State Bias Correction for one or more records
CS_OFFL_SIR_FDM_2__20160815T082413_20160815T082951_C002	Sea State Bias Correction, Altimetric Wind Speed	There is an error with the Altimetric Wind Speed and Sea State Bias Correction for one or more records
CS_OFFL_SIR_FDM_2__20160815T085346_20160815T092713_C002	Sea State Bias Correction, Altimetric Wind Speed	There is an error with the Altimetric Wind Speed and Sea State Bias Correction for one or more records
CS_OFFL_SIR_FDM_2__20160815T103042_20160815T103129_C002	Sea State Bias Correction, Altimetric Wind Speed	There is an error with the Altimetric Wind Speed and Sea State Bias Correction for one or more records
CS_OFFL_SIR_FDM_2__20160815T104523_20160815T110631_C002	Sea State Bias Correction, Altimetric Wind Speed	There is an error with the Altimetric Wind Speed and Sea State Bias Correction for one or more records
CS_OFFL_SIR_FDM_2__20160815T112358_20160815T113353_C002	Sea State Bias Correction, Altimetric Wind Speed	There is an error with the Altimetric Wind Speed and Sea State Bias Correction for one or more records
CS_OFFL_SIR_FDM_2__20160815T113541_20160815T114815_C002	Sea State Bias Correction, Altimetric Wind Speed	There is an error with the Altimetric Wind Speed and Sea State Bias Correction for one or more records
CS_OFFL_SIR_FDM_2__20160815T115738_20160815T115751_C001	Sea State Bias Correction, Altimetric Wind Speed	There is an error with the Altimetric Wind Speed and Sea State Bias Correction for one or more records
CS_OFFL_SIR_FDM_2__20160815T121022_20160815T124524_C001	Sea State Bias Correction, Altimetric Wind Speed	There is an error with the Altimetric Wind Speed and Sea State Bias Correction for one or more records
CS_OFFL_SIR_FDM_2__20160815T130433_20160815T133440_C001	Sea State Bias Correction, Altimetric Wind Speed	There is an error with the Altimetric Wind Speed and Sea State Bias Correction for one or more records
CS_OFFL_SIR_FDM_2__20160815T134840_20160815T135510_C001	Sea State Bias Correction	There is an error with the Sea State Bias Correction for one or more records
CS_OFFL_SIR_FDM_2__20160815T135533_20160815T140754_C001	Sea State Bias Correction, Altimetric Wind Speed	There is an error with the Altimetric Wind Speed and Sea State Bias Correction for one or more records
CS_OFFL_SIR_FDM_2__20160815T140959_20160815T142448_C001	Sea State Bias Correction, Altimetric Wind Speed	There is an error with the Altimetric Wind Speed and Sea State Bias Correction for one or more records
CS_OFFL_SIR_FDM_2__20160815T145827_20160815T151432_C001	Sea State Bias Correction, Altimetric Wind Speed	There is an error with the Altimetric Wind Speed and Sea State Bias Correction for one or more records
CS_OFFL_SIR_FDM_2__20160815T154535_20160815T154755_C001	Sea State Bias Correction, Altimetric Wind Speed	There is an error with the Altimetric Wind Speed and Sea State Bias Correction for one or more records
CS_OFFL_SIR_FDM_2__20160815T154957_20160815T160321_C001	Sea State Bias Correction	There is an error with the Sea State Bias Correction for one or more records
CS_OFFL_SIR_FDM_2__20160815T175811_20160815T182344_C001	Sea State Bias Correction	There is an error with the Sea State Bias Correction for one or more records
CS_OFFL_SIR_FDM_2__20160815T182355_20160815T182541_C001	Sea State Bias Correction, Altimetric Wind Speed	There is an error with the Altimetric Wind Speed and Sea State Bias Correction for one or more records
CS_OFFL_SIR_FDM_2__20160815T184835_20160815T192146_C002	Sea State Bias Correction	There is an error with the Sea State Bias Correction for one or more records
CS_OFFL_SIR_FDM_2__20160815T202314_20160815T203028_C002	Sea State Bias Correction, Altimetric Wind Speed	There is an error with the Altimetric Wind Speed and Sea State Bias Correction for one or more records
CS_OFFL_SIR_FDM_2__20160815T211817_20160815T215047_C002	Sea State Bias Correction, Altimetric Wind Speed	There is an error with the Altimetric Wind Speed and Sea State Bias Correction for one or more records
CS_OFFL_SIR_FDM_2__20160815T221830_20160815T223906_C002	Sea State Bias Correction, Altimetric Wind Speed	There is an error with the Altimetric Wind Speed and Sea State Bias Correction for one or more records
CS_OFFL_SIR_FDM_2__20160815T225639_20160815T233207_C002	Sea State Bias Correction, Altimetric Wind Speed	There is an error with the Altimetric Wind Speed and Sea State Bias Correction for one or more records
CS_OFFL_SIR_FDM_2__20160815T234155_20160815T234358_C002	Sea State Bias Correction, Altimetric Wind Speed	There is an error with the Altimetric Wind Speed and Sea State Bias Correction for one or more records
CS_OFFL_SIR_FDM_2__20160815T235415_20160816T001709_C002	Sea State Bias Correction	There is an error with the Sea State Bias Correction for one or more records

## 6.5 L2 FDM Measurement Confidence Data Check

CryoSat L2 data includes a measurement confidence flag (field 8) for each 20-Hz measurement record. The bit value of this flag indicates any problems when set.

Number of products with errors: 39

Product	Test Failed	Description
CS_OFFL_SIR_FDM_2__20160815T053600_20160815T060939_C001	Echo error	The Echo Rx1 Error flag is set, indicating a degraded raw echo
CS_OFFL_SIR_FDM_2__20160815T065424_20160815T065728_C001	Attitude correction missing	The attitude has not been corrected
CS_OFFL_SIR_FDM_2__20160815T083350_20160815T083444_C001	Attitude correction missing	The attitude has not been corrected
CS_OFFL_SIR_FDM_2__20160815T101300_20160815T101356_C001	Attitude correction missing	The attitude has not been corrected
CS_OFFL_SIR_FDM_2__20160815T115738_20160815T115751_C001	Attitude correction missing	The attitude has not been corrected
CS_OFFL_SIR_FDM_2__20160815T121022_20160815T124524_C001	Attitude correction missing	The attitude has not been corrected
CS_OFFL_SIR_FDM_2__20160815T124815_20160815T125333_C001	Attitude correction missing	The attitude has not been corrected
CS_OFFL_SIR_FDM_2__20160815T125339_20160815T125345_C001	Attitude correction missing	The attitude has not been corrected
CS_OFFL_SIR_FDM_2__20160815T125353_20160815T125636_C001	Attitude correction missing	The attitude has not been corrected
CS_OFFL_SIR_FDM_2__20160815T130433_20160815T133440_C001	Attitude correction missing	The attitude has not been corrected
CS_OFFL_SIR_FDM_2__20160815T133618_20160815T134026_C001	Attitude correction missing	The attitude has not been corrected
CS_OFFL_SIR_FDM_2__20160815T134840_20160815T135510_C001	Attitude correction missing	The attitude has not been corrected
CS_OFFL_SIR_FDM_2__20160815T135533_20160815T140754_C001	Attitude correction missing	The attitude has not been corrected
CS_OFFL_SIR_FDM_2__20160815T140959_20160815T142448_C001	Attitude correction missing	The attitude has not been corrected
CS_OFFL_SIR_FDM_2__20160815T142730_20160815T143230_C001	Attitude correction missing	The attitude has not been corrected
CS_OFFL_SIR_FDM_2__20160815T143237_20160815T143244_C001	Attitude correction missing	The attitude has not been corrected
CS_OFFL_SIR_FDM_2__20160815T143250_20160815T143302_C001	Attitude correction missing	The attitude has not been corrected
CS_OFFL_SIR_FDM_2__20160815T143309_20160815T143432_C001	Attitude correction missing	The attitude has not been corrected
CS_OFFL_SIR_FDM_2__20160815T144156_20160815T145208_C001	Attitude correction missing	The attitude has not been corrected
CS_OFFL_SIR_FDM_2__20160815T145315_20160815T145538_C001	Attitude correction missing	The attitude has not been corrected
CS_OFFL_SIR_FDM_2__20160815T145827_20160815T151432_C001	Attitude correction missing	The attitude has not been corrected
CS_OFFL_SIR_FDM_2__20160815T152734_20160815T154110_C001	Attitude correction missing	The attitude has not been corrected
CS_OFFL_SIR_FDM_2__20160815T154535_20160815T154755_C001	Attitude correction missing	The attitude has not been corrected
CS_OFFL_SIR_FDM_2__20160815T154957_20160815T160321_C001	Attitude correction missing	The attitude has not been corrected
CS_OFFL_SIR_FDM_2__20160815T160642_20160815T161141_C001	Attitude correction missing	The attitude has not been corrected
CS_OFFL_SIR_FDM_2__20160815T161148_20160815T161200_C001	Attitude correction missing	The attitude has not been corrected
CS_OFFL_SIR_FDM_2__20160815T161206_20160815T161215_C001	Attitude correction missing	The attitude has not been corrected
CS_OFFL_SIR_FDM_2__20160815T161223_20160815T161329_C001	Attitude correction missing	The attitude has not been corrected
CS_OFFL_SIR_FDM_2__20160815T170606_20160815T171354_C001	Attitude correction missing	The attitude has not been corrected
CS_OFFL_SIR_FDM_2__20160815T171504_20160815T171551_C001	Attitude correction missing	The attitude has not been corrected
CS_OFFL_SIR_FDM_2__20160815T171955_20160815T174203_C001	Attitude correction missing	The attitude has not been corrected
CS_OFFL_SIR_FDM_2__20160815T174727_20160815T175057_C001	Attitude correction missing	The attitude has not been corrected
CS_OFFL_SIR_FDM_2__20160815T175105_20160815T175114_C001	Attitude correction missing	The attitude has not been corrected
CS_OFFL_SIR_FDM_2__20160815T175120_20160815T175448_C001	Attitude correction missing	The attitude has not been corrected
CS_OFFL_SIR_FDM_2__20160815T175811_20160815T182344_C001	Attitude correction missing	The attitude has not been corrected
CS_OFFL_SIR_FDM_2__20160815T182347_20160815T182349_C001	Attitude correction missing	The attitude has not been corrected
CS_OFFL_SIR_FDM_2__20160815T182355_20160815T182541_C001	Attitude correction missing	The attitude has not been corrected
CS_OFFL_SIR_FDM_2__20160815T182548_20160815T182623_C001	Attitude correction missing	The attitude has not been corrected
CS_OFFL_SIR_FDM_2__20160815T184835_20160815T192146_C002	Echo error	The Echo Rx1 Error flag is set, indicating a degraded raw echo

## 6.6 L2 FDM Range Measurement Check

CryoSat L2 data includes a CFI (field 17) and OCOG (field 22) Range Averaging Status flag for each measurement record. The bit value of this flag indicates any problems when set.

Number of products with errors: 26

Product	Test Failed	Description
CS_OFFL_SIR_FDM_2__20160814T235227_20160815T002402_C001	CFI Retracked Range Flag	The master fail flag is set by the CFI call, for one or more records, indicating the values stored in fields #13, #14, #15 and #16 should be ignored for these records.
CS_OFFL_SIR_FDM_2__20160815T012705_20160815T014349_C001	CFI Retracked Range Flag	The master fail flag is set by the CFI call, for one or more records, indicating the values stored in fields #13, #14, #15 and #16 should be ignored for these records.
CS_OFFL_SIR_FDM_2__20160815T021655_20160815T023234_C001	CFI Retracked Range Flag	The master fail flag is set by the CFI call, for one or more records, indicating the values stored in fields #13, #14, #15 and #16 should be ignored for these records.
CS_OFFL_SIR_FDM_2__20160815T023853_20160815T024909_C001	CFI Retracked Range Flag	The master fail flag is set by the CFI call, for one or more records, indicating the values stored in fields #13, #14, #15 and #16 should be ignored for these records.
CS_OFFL_SIR_FDM_2__20160815T035850_20160815T040600_C001	CFI Retracked Range Flag	The master fail flag is set by the CFI call, for one or more records, indicating the values stored in fields #13, #14, #15 and #16 should be ignored for these records.
CS_OFFL_SIR_FDM_2__20160815T040723_20160815T041211_C001	CFI Retracked Range Flag	The master fail flag is set by the CFI call, for one or more records, indicating the values stored in fields #13, #14, #15 and #16 should be ignored for these records.
CS_OFFL_SIR_FDM_2__20160815T053600_20160815T060939_C001	CFI Retracked Range Flag	The master fail flag is set by the CFI call, for one or more records, indicating the values stored in fields #13, #14, #15 and #16 should be ignored for these records.
CS_OFFL_SIR_FDM_2__20160815T062539_20160815T065318_C001	CFI Retracked Range Flag	The master fail flag is set by the CFI call, for one or more records, indicating the values stored in fields #13, #14, #15 and #16 should be ignored for these records.
CS_OFFL_SIR_FDM_2__20160815T065728_20160815T070058_C001	CFI Retracked Range Flag	The master fail flag is set by the CFI call, for one or more records, indicating the values stored in fields #13, #14, #15 and #16 should be ignored for these records.





