

1. Overview

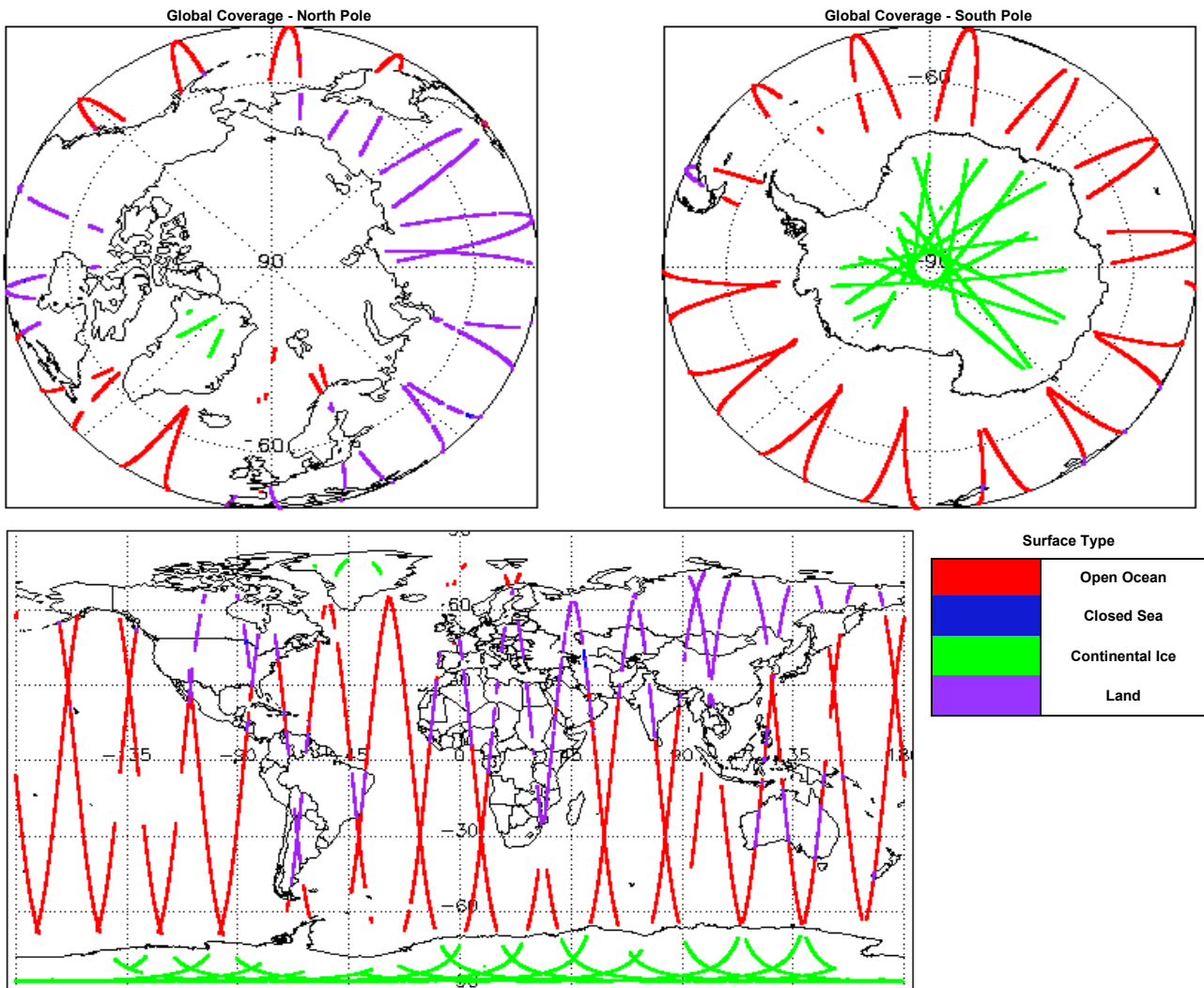
Report Production Date:	21-Mar-2016
Processor Used:	CryoSat Ice Processor
Data Used:	L1 and L2 Fast Delivery Marine (FDM) Mode and L0 Data

Check	Status
Server check: science-pds.cryosat.esa.int	Nominal
Server check: calval-pds.cryosat.esa.int	Nominal
Product Software Check	Nominal
Product Format Check	Nominal
Product Header Analysis	See Section 4.2
Star Tracker Usage Check	See Section 5.3
Calibration Usage Check	Nominal
Auxiliary Data File Usage Check	Nominal
Auxiliary Correction Error Check	See Section 6.4
Measurement Confidence Data Check	See Section 5.7, 6.5, 6.6, 6.7 and 6.8

Mission / Instrument News

17-Mar-2016	None
18-Mar-2016	None
19-Mar-2016	Nothing planned

2. Global Coverage



3. Instrument Configuration

The SIRAL instrument configuration for the day of acquisition is provided below.

SIRAL instrument(s) in use:	SIRAL - A
Star Tracker(s) in use:	Star Tracker 1

4. Level 0 Data Quality Check

4.1 L0 Product Format Check

Each product, retrieved and unpacked from the science server, is checked to ensure it consists of both an XML header file (.HDR) and a binary product file (.DBL).

Number of products with errors: 0

4.2 L0 Product Header Analysis

For all products, a series of pre-defined checks are carried out on the MPH and SPH in order to identify any inconsistencies and/or errors raised by the processing chain.

Number of products with errors: 5

Product	Test Failed
CS_OPER_SIR1SAR_0__20160318T200258_20160318T201021_0001.HDR	Percentage of processing errors detected greater than minimum acceptable threshold.
CS_OPER_SIR1SAR_0__20160318T205814_20160318T210125_0001.HDR	Percentage of processing errors detected greater than minimum acceptable threshold.
CS_OPER_SIR1SIN_0__20160318T213638_20160318T214027_0001.HDR	Percentage of processing errors detected greater than minimum acceptable threshold.
CS_OPER_SIR2SIN_0__20160318T225303_20160318T225905_0001.HDR	Percentage of processing errors detected greater than minimum acceptable threshold.
CS_OPER_SIR2SIN_0__20160318T215503_20160318T215908_0001.HDR	Percentage of processing errors detected greater than minimum acceptable threshold.

5. Level 1B FDM Data Quality Check

5.1 L1B FDM Product Format Check

Each product, retrieved and unpacked from the science server, is checked to ensure it consists of both an XML header file (.HDR) and a binary product file (.DBL).

Number of products with errors: 0

5.2 L1B FDM Product Header Analysis

For all products, a series of pre-defined checks are carried out on the MPH and SPH in order to identify any inconsistencies and/or errors raised by the ground-segment processing chain.

Number of products with errors: 0

5.3 L1B FDM Star Tracker Usage Check

Each product is checked in order to ensure a valid star tracker file has been used in processing.

Number of products with errors: 22

Product	Test Failed
CS_OFFL_SIR_FDM_1B_20160317T235704_20160318T000403_C001	No Star Tracker file used in the processing of this product
CS_OFFL_SIR_FDM_1B_20160318T000655_20160318T000717_C001	No Star Tracker file used in the processing of this product
CS_OFFL_SIR_FDM_1B_20160318T001803_20160318T002224_C001	No Star Tracker file used in the processing of this product
CS_OFFL_SIR_FDM_1B_20160318T002227_20160318T002342_C001	No Star Tracker file used in the processing of this product
CS_OFFL_SIR_FDM_1B_20160318T002345_20160318T002405_C001	No Star Tracker file used in the processing of this product
CS_OFFL_SIR_FDM_1B_20160318T002407_20160318T002410_C001	No Star Tracker file used in the processing of this product
CS_OFFL_SIR_FDM_1B_20160318T002413_20160318T002537_C001	No Star Tracker file used in the processing of this product
CS_OFFL_SIR_FDM_1B_20160318T002540_20160318T002553_C001	No Star Tracker file used in the processing of this product
CS_OFFL_SIR_FDM_1B_20160318T002600_20160318T002615_C001	No Star Tracker file used in the processing of this product
CS_OFFL_SIR_FDM_1B_20160318T002657_20160318T002739_C001	No Star Tracker file used in the processing of this product
CS_OFFL_SIR_FDM_1B_20160318T003125_20160318T003144_C001	No Star Tracker file used in the processing of this product
CS_OFFL_SIR_FDM_1B_20160318T003206_20160318T003224_C001	No Star Tracker file used in the processing of this product
CS_OFFL_SIR_FDM_1B_20160318T003258_20160318T005620_C001	No Star Tracker file used in the processing of this product
CS_OFFL_SIR_FDM_1B_20160318T005933_20160318T010311_C001	No Star Tracker file used in the processing of this product
CS_OFFL_SIR_FDM_1B_20160318T010318_20160318T010327_C001	No Star Tracker file used in the processing of this product
CS_OFFL_SIR_FDM_1B_20160318T010333_20160318T010639_C001	No Star Tracker file used in the processing of this product
CS_OFFL_SIR_FDM_1B_20160318T010914_20160318T013556_C001	No Star Tracker file used in the processing of this product
CS_OFFL_SIR_FDM_1B_20160318T013558_20160318T013816_C001	No Star Tracker file used in the processing of this product
CS_OFFL_SIR_FDM_1B_20160318T132048_20160318T132102_C001	No Star Tracker file used in the processing of this product
CS_OFFL_SIR_FDM_1B_20160318T145700_20160318T145715_C001	No Star Tracker file used in the processing of this product
CS_OFFL_SIR_FDM_1B_20160318T163333_20160318T163510_C001	No Star Tracker file used in the processing of this product
CS_OFFL_SIR_FDM_1B_20160318T192128_20160318T195730_C001	No Star Tracker file used in the processing of this product

5.4 L1B FDM Calibration Usage Check

Each product is checked in order to ensure the necessary calibration files have been used in processing.

Number of products with errors: 0

5.5 L1B FDM Auxiliary Data File Usage Check

Each product is checked for missing Data Set Descriptors with respect to a pre-determined baseline and also to check the validity of Auxiliary Data Files is correct.

Number of products with errors: 0

5.6 L1B FDM Auxiliary Correction Error Check

CryoSat L1B data includes a correction error flag (field 54) for each measurement record. The bit value of this flag indicates any problems when set.

Number of products with errors: 0

5.7 L1B FDM Measurement Confidence Data Check

CryoSat L1B data includes a measurement confidence flag (field 18) for each measurement record. The bit value of this flag indicates any problems when set.

Number of products with errors: 22

Product	Test Failed	Description
CS_OFFL_SIR_FDM_1B_20160317T235704_20160318T000403_C001	Attitude correction missing	The attitude has not been corrected
CS_OFFL_SIR_FDM_1B_20160318T000655_20160318T000717_C001	Attitude correction missing	The attitude has not been corrected
CS_OFFL_SIR_FDM_1B_20160318T001803_20160318T002224_C001	Attitude correction missing	The attitude has not been corrected
CS_OFFL_SIR_FDM_1B_20160318T002227_20160318T002342_C001	Attitude correction missing	The attitude has not been corrected
CS_OFFL_SIR_FDM_1B_20160318T002345_20160318T002405_C001	Attitude correction missing	The attitude has not been corrected
CS_OFFL_SIR_FDM_1B_20160318T002407_20160318T002410_C001	Attitude correction missing	The attitude has not been corrected
CS_OFFL_SIR_FDM_1B_20160318T002413_20160318T002537_C001	Attitude correction missing	The attitude has not been corrected

CS_OFFL_SIR_FDM_1B_20160318T002540_20160318T002553_C001	Attitude correction missing	The attitude has not been corrected
CS_OFFL_SIR_FDM_1B_20160318T002600_20160318T002615_C001	Attitude correction missing	The attitude has not been corrected
CS_OFFL_SIR_FDM_1B_20160318T002657_20160318T002739_C001	Attitude correction missing	The attitude has not been corrected
CS_OFFL_SIR_FDM_1B_20160318T003125_20160318T003144_C001	Attitude correction missing	The attitude has not been corrected
CS_OFFL_SIR_FDM_1B_20160318T003206_20160318T003224_C001	Attitude correction missing	The attitude has not been corrected
CS_OFFL_SIR_FDM_1B_20160318T003258_20160318T005620_C001	Attitude correction missing	The attitude has not been corrected
CS_OFFL_SIR_FDM_1B_20160318T005933_20160318T010311_C001	Attitude correction missing	The attitude has not been corrected
CS_OFFL_SIR_FDM_1B_20160318T010318_20160318T010327_C001	Attitude correction missing	The attitude has not been corrected
CS_OFFL_SIR_FDM_1B_20160318T010333_20160318T010639_C001	Attitude correction missing	The attitude has not been corrected
CS_OFFL_SIR_FDM_1B_20160318T010914_20160318T013556_C001	Attitude correction missing	The attitude has not been corrected
CS_OFFL_SIR_FDM_1B_20160318T013558_20160318T013816_C001	Attitude correction missing	The attitude has not been corrected
CS_OFFL_SIR_FDM_1B_20160318T132048_20160318T132102_C001	Attitude correction missing	The attitude has not been corrected
CS_OFFL_SIR_FDM_1B_20160318T145700_20160318T145715_C001	Attitude correction missing	The attitude has not been corrected
CS_OFFL_SIR_FDM_1B_20160318T163333_20160318T163510_C001	Attitude correction missing	The attitude has not been corrected
CS_OFFL_SIR_FDM_1B_20160318T192128_20160318T195730_C001	Attitude correction missing	The attitude has not been corrected

6. Level 2 FDM Data Quality Check

6.1 L2 FDM Product Format Check

Each product, retrieved and unpacked from the science server, is checked to ensure it consists of both an XML header file (.HDR) and a binary product file (.DBL).

Number of products with errors: 0

6.2 L2 FDM Product Header Analysis

For all products, a series of pre-defined checks are carried out on the MPH and SPH in order to identify any inconsistencies and/or errors raised by the ground-segment processing chain.

Number of products with errors: 0

6.3 L2 FDM Auxiliary Data File Usage Check

Each product is checked for missing Data Set Descriptors with respect to a pre-determined baseline and also to check the validity of Auxiliary Data Files is correct.

Number of products with errors: 0

6.4 L2 FDM Auxiliary Correction Error Check

Each product is checked to detect auxiliary corrections flagged by the ground-station processing chain as missing or containing errors.

Number of products with errors: 33

Product	Test Failed	Description
CS_OFFL_SIR_FDM_2_20160318T003258_20160318T005620_C001	Sea State Bias Correction, Altimetric Wind Speed	There is an error with the Altimetric Wind Speed and Sea State Bias Correction for one or more records
CS_OFFL_SIR_FDM_2_20160318T024837_20160318T030031_C001	Sea State Bias Correction	There is an error with the Sea State Bias Correction for one or more records
CS_OFFL_SIR_FDM_2_20160318T030609_20160318T032306_C001	Sea State Bias Correction, Altimetric Wind Speed	There is an error with the Altimetric Wind Speed and Sea State Bias Correction for one or more records
CS_OFFL_SIR_FDM_2_20160318T034632_20160318T035231_C001	Sea State Bias Correction, Altimetric Wind Speed	There is an error with the Altimetric Wind Speed and Sea State Bias Correction for one or more records
CS_OFFL_SIR_FDM_2_20160318T042757_20160318T050202_C001	Sea State Bias Correction	There is an error with the Sea State Bias Correction for one or more records
CS_OFFL_SIR_FDM_2_20160318T051551_20160318T051645_C001	Sea State Bias Correction, Altimetric Wind Speed	There is an error with the Altimetric Wind Speed and Sea State Bias Correction for one or more records
CS_OFFL_SIR_FDM_2_20160318T060709_20160318T064155_C001	Sea State Bias Correction, Altimetric Wind Speed	There is an error with the Altimetric Wind Speed and Sea State Bias Correction for one or more records
CS_OFFL_SIR_FDM_2_20160318T070626_20160318T073107_C001	Sea State Bias Correction, Altimetric Wind Speed	There is an error with the Altimetric Wind Speed and Sea State Bias Correction for one or more records
CS_OFFL_SIR_FDM_2_20160318T074750_20160318T081734_C001	Sea State Bias Correction, Altimetric Wind Speed	There is an error with the Altimetric Wind Speed and Sea State Bias Correction for one or more records
CS_OFFL_SIR_FDM_2_20160318T085606_20160318T090916_C001	Sea State Bias Correction, Altimetric Wind Speed	There is an error with the Altimetric Wind Speed and Sea State Bias Correction for one or more records
CS_OFFL_SIR_FDM_2_20160318T092639_20160318T094227_C001	Sea State Bias Correction, Altimetric Wind Speed	There is an error with the Altimetric Wind Speed and Sea State Bias Correction for one or more records
CS_OFFL_SIR_FDM_2_20160318T094429_20160318T095351_C001	Sea State Bias Correction, Altimetric Wind Speed	There is an error with the Altimetric Wind Speed and Sea State Bias Correction for one or more records
CS_OFFL_SIR_FDM_2_20160318T102105_20160318T103307_C001	Sea State Bias Correction	There is an error with the Sea State Bias Correction for one or more records
CS_OFFL_SIR_FDM_2_20160318T104927_20160318T105030_C001	Sea State Bias Correction, Altimetric Wind Speed	There is an error with the Altimetric Wind Speed and Sea State Bias Correction for one or more records
CS_OFFL_SIR_FDM_2_20160318T115925_20160318T120513_C001	Sea State Bias Correction, Altimetric Wind Speed	There is an error with the Altimetric Wind Speed and Sea State Bias Correction for one or more records
CS_OFFL_SIR_FDM_2_20160318T120758_20160318T123214_C001	Sea State Bias Correction, Altimetric Wind Speed	There is an error with the Altimetric Wind Speed and Sea State Bias Correction for one or more records
CS_OFFL_SIR_FDM_2_20160318T134352_20160318T135346_C001	Sea State Bias Correction, Altimetric Wind Speed	There is an error with the Altimetric Wind Speed and Sea State Bias Correction for one or more records
CS_OFFL_SIR_FDM_2_20160318T135920_20160318T141118_C001	Sea State Bias Correction, Altimetric Wind Speed	There is an error with the Altimetric Wind Speed and Sea State Bias Correction for one or more records
CS_OFFL_SIR_FDM_2_20160318T142407_20160318T145206_C001	Sea State Bias Correction, Altimetric Wind Speed	There is an error with the Altimetric Wind Speed and Sea State Bias Correction for one or more records
CS_OFFL_SIR_FDM_2_20160318T151714_20160318T153300_C001	Sea State Bias Correction, Altimetric Wind Speed	There is an error with the Altimetric Wind Speed and Sea State Bias Correction for one or more records
CS_OFFL_SIR_FDM_2_20160318T165501_20160318T172943_C001	Sea State Bias Correction	There is an error with the Sea State Bias Correction for one or more records
CS_OFFL_SIR_FDM_2_20160318T181251_20160318T181402_C001	Sea State Bias Correction, Altimetric Wind Speed	There is an error with the Altimetric Wind Speed and Sea State Bias Correction for one or more records
CS_OFFL_SIR_FDM_2_20160318T183354_20160318T190218_C001	Sea State Bias Correction, Altimetric Wind Speed	There is an error with the Altimetric Wind Speed and Sea State Bias Correction for one or more records
CS_OFFL_SIR_FDM_2_20160318T192128_20160318T195730_C001	Sea State Bias Correction, Altimetric Wind Speed	There is an error with the Altimetric Wind Speed and Sea State Bias Correction for one or more records
CS_OFFL_SIR_FDM_2_20160318T201538_20160318T202438_C001	Sea State Bias Correction, Altimetric Wind Speed	There is an error with the Altimetric Wind Speed and Sea State Bias Correction for one or more records
CS_OFFL_SIR_FDM_2_20160318T202918_20160318T204708_C001	Sea State Bias Correction, Altimetric Wind Speed	There is an error with the Altimetric Wind Speed and Sea State Bias Correction for one or more records
CS_OFFL_SIR_FDM_2_20160318T210126_20160318T210147_C001	Sea State Bias Correction, Altimetric Wind Speed	There is an error with the Altimetric Wind Speed and Sea State Bias Correction for one or more records

CS_OFFL_SIR_FDM_2__20160318T213339_20160318T213613_C001	Sea State Bias Correction, Altimetric Wind Speed	There is an error with the Altimetric Wind Speed and Sea State Bias Correction for one or more records
CS_OFFL_SIR_FDM_2__20160318T215908_20160318T220837_C001	Sea State Bias Correction, Altimetric Wind Speed	There is an error with the Altimetric Wind Speed and Sea State Bias Correction for one or more records
CS_OFFL_SIR_FDM_2__20160318T221040_20160318T222618_C001	Sea State Bias Correction, Altimetric Wind Speed	There is an error with the Altimetric Wind Speed and Sea State Bias Correction for one or more records
CS_OFFL_SIR_FDM_2__20160318T224109_20160318T224436_C001	Sea State Bias Correction, Altimetric Wind Speed	There is an error with the Altimetric Wind Speed and Sea State Bias Correction for one or more records
CS_OFFL_SIR_FDM_2__20160318T225906_20160318T231203_C001	Sea State Bias Correction, Altimetric Wind Speed	There is an error with the Altimetric Wind Speed and Sea State Bias Correction for one or more records
CS_OFFL_SIR_FDM_2__20160318T234910_20160319T000524_C001	Sea State Bias Correction	There is an error with the Sea State Bias Correction for one or more records

6.5 L2 FDM Measurement Confidence Data Check

CryoSat L2 data includes a measurement confidence flag (field 8) for each 20-Hz measurement record. The bit value of this flag indicates any problems when set.

Number of products with errors: 22

Product	Test Failed	Description
CS_OFFL_SIR_FDM_2__20160317T235704_20160318T000403_C001	Attitude correction missing	The attitude has not been corrected
CS_OFFL_SIR_FDM_2__20160318T000655_20160318T000717_C001	Attitude correction missing	The attitude has not been corrected
CS_OFFL_SIR_FDM_2__20160318T001803_20160318T002224_C001	Attitude correction missing	The attitude has not been corrected
CS_OFFL_SIR_FDM_2__20160318T002227_20160318T002342_C001	Attitude correction missing	The attitude has not been corrected
CS_OFFL_SIR_FDM_2__20160318T002345_20160318T002405_C001	Attitude correction missing	The attitude has not been corrected
CS_OFFL_SIR_FDM_2__20160318T002407_20160318T002410_C001	Attitude correction missing	The attitude has not been corrected
CS_OFFL_SIR_FDM_2__20160318T002413_20160318T002537_C001	Attitude correction missing	The attitude has not been corrected
CS_OFFL_SIR_FDM_2__20160318T002540_20160318T002553_C001	Attitude correction missing	The attitude has not been corrected
CS_OFFL_SIR_FDM_2__20160318T002600_20160318T002615_C001	Attitude correction missing	The attitude has not been corrected
CS_OFFL_SIR_FDM_2__20160318T002657_20160318T002739_C001	Attitude correction missing	The attitude has not been corrected
CS_OFFL_SIR_FDM_2__20160318T003125_20160318T003144_C001	Attitude correction missing	The attitude has not been corrected
CS_OFFL_SIR_FDM_2__20160318T003206_20160318T003224_C001	Attitude correction missing	The attitude has not been corrected
CS_OFFL_SIR_FDM_2__20160318T003258_20160318T005620_C001	Attitude correction missing	The attitude has not been corrected
CS_OFFL_SIR_FDM_2__20160318T005933_20160318T010311_C001	Attitude correction missing	The attitude has not been corrected
CS_OFFL_SIR_FDM_2__20160318T010318_20160318T010327_C001	Attitude correction missing	The attitude has not been corrected
CS_OFFL_SIR_FDM_2__20160318T010333_20160318T010639_C001	Attitude correction missing	The attitude has not been corrected
CS_OFFL_SIR_FDM_2__20160318T010914_20160318T013556_C001	Attitude correction missing	The attitude has not been corrected
CS_OFFL_SIR_FDM_2__20160318T013558_20160318T013816_C001	Attitude correction missing	The attitude has not been corrected
CS_OFFL_SIR_FDM_2__20160318T132048_20160318T132102_C001	Attitude correction missing	The attitude has not been corrected
CS_OFFL_SIR_FDM_2__20160318T145700_20160318T145715_C001	Attitude correction missing	The attitude has not been corrected
CS_OFFL_SIR_FDM_2__20160318T163333_20160318T163510_C001	Attitude correction missing	The attitude has not been corrected
CS_OFFL_SIR_FDM_2__20160318T192128_20160318T195730_C001	Attitude correction missing	The attitude has not been corrected

6.6 L2 FDM Range Measurement Check

CryoSat L2 data includes a CFI (field 17) and OCOG (field 22) Range Averaging Status flag for each measurement record. The bit value of this flag indicates any problems when set.

Number of products with errors: 19

Product	Test Failed	Description
CS_OFFL_SIR_FDM_2__20160318T003258_20160318T005620_C001	CFI Retracked Range Flag	The master fail flag is set by the CFI call, for one or more records, indicating the values stored in fields #13, #14, #15 and #16 should be ignored for these records.
CS_OFFL_SIR_FDM_2__20160318T030609_20160318T032306_C001	CFI Retracked Range Flag	The master fail flag is set by the CFI call, for one or more records, indicating the values stored in fields #13, #14, #15 and #16 should be ignored for these records.
CS_OFFL_SIR_FDM_2__20160318T034632_20160318T035231_C001	CFI Retracked Range Flag	The master fail flag is set by the CFI call, for one or more records, indicating the values stored in fields #13, #14, #15 and #16 should be ignored for these records.
CS_OFFL_SIR_FDM_2__20160318T060709_20160318T064155_C001	CFI Retracked Range Flag	The master fail flag is set by the CFI call, for one or more records, indicating the values stored in fields #13, #14, #15 and #16 should be ignored for these records.
CS_OFFL_SIR_FDM_2__20160318T074750_20160318T081734_C001	CFI Retracked Range Flag	The master fail flag is set by the CFI call, for one or more records, indicating the values stored in fields #13, #14, #15 and #16 should be ignored for these records.
CS_OFFL_SIR_FDM_2__20160318T092639_20160318T094227_C001	CFI Retracked Range Flag	The master fail flag is set by the CFI call, for one or more records, indicating the values stored in fields #13, #14, #15 and #16 should be ignored for these records.
CS_OFFL_SIR_FDM_2__20160318T094429_20160318T095351_C001	CFI Retracked Range Flag	The master fail flag is set by the CFI call, for one or more records, indicating the values stored in fields #13, #14, #15 and #16 should be ignored for these records.
CS_OFFL_SIR_FDM_2__20160318T115925_20160318T120513_C001	CFI Retracked Range Flag	The master fail flag is set by the CFI call, for one or more records, indicating the values stored in fields #13, #14, #15 and #16 should be ignored for these records.
CS_OFFL_SIR_FDM_2__20160318T120758_20160318T123214_C001	CFI Retracked Range Flag	The master fail flag is set by the CFI call, for one or more records, indicating the values stored in fields #13, #14, #15 and #16 should be ignored for these records.
CS_OFFL_SIR_FDM_2__20160318T134352_20160318T135346_C001	CFI Retracked Range Flag	The master fail flag is set by the CFI call, for one or more records, indicating the values stored in fields #13, #14, #15 and #16 should be ignored for these records.
CS_OFFL_SIR_FDM_2__20160318T142407_20160318T145206_C001	CFI Retracked Range Flag	The master fail flag is set by the CFI call, for one or more records, indicating the values stored in fields #13, #14, #15 and #16 should be ignored for these records.
CS_OFFL_SIR_FDM_2__20160318T151714_20160318T153300_C001	CFI Retracked Range Flag	The master fail flag is set by the CFI call, for one or more records, indicating the values stored in fields #13, #14, #15 and #16 should be ignored for these records.
CS_OFFL_SIR_FDM_2__20160318T181251_20160318T181402_C001	CFI Retracked Range Flag	The master fail flag is set by the CFI call, for one or more records, indicating the values stored in fields #13, #14, #15 and #16 should be ignored for these records.
CS_OFFL_SIR_FDM_2__20160318T183354_20160318T190218_C001	CFI Retracked Range Flag	The master fail flag is set by the CFI call, for one or more records, indicating the values stored in fields #13, #14, #15 and #16 should be ignored for these records.

