

**1. Overview**

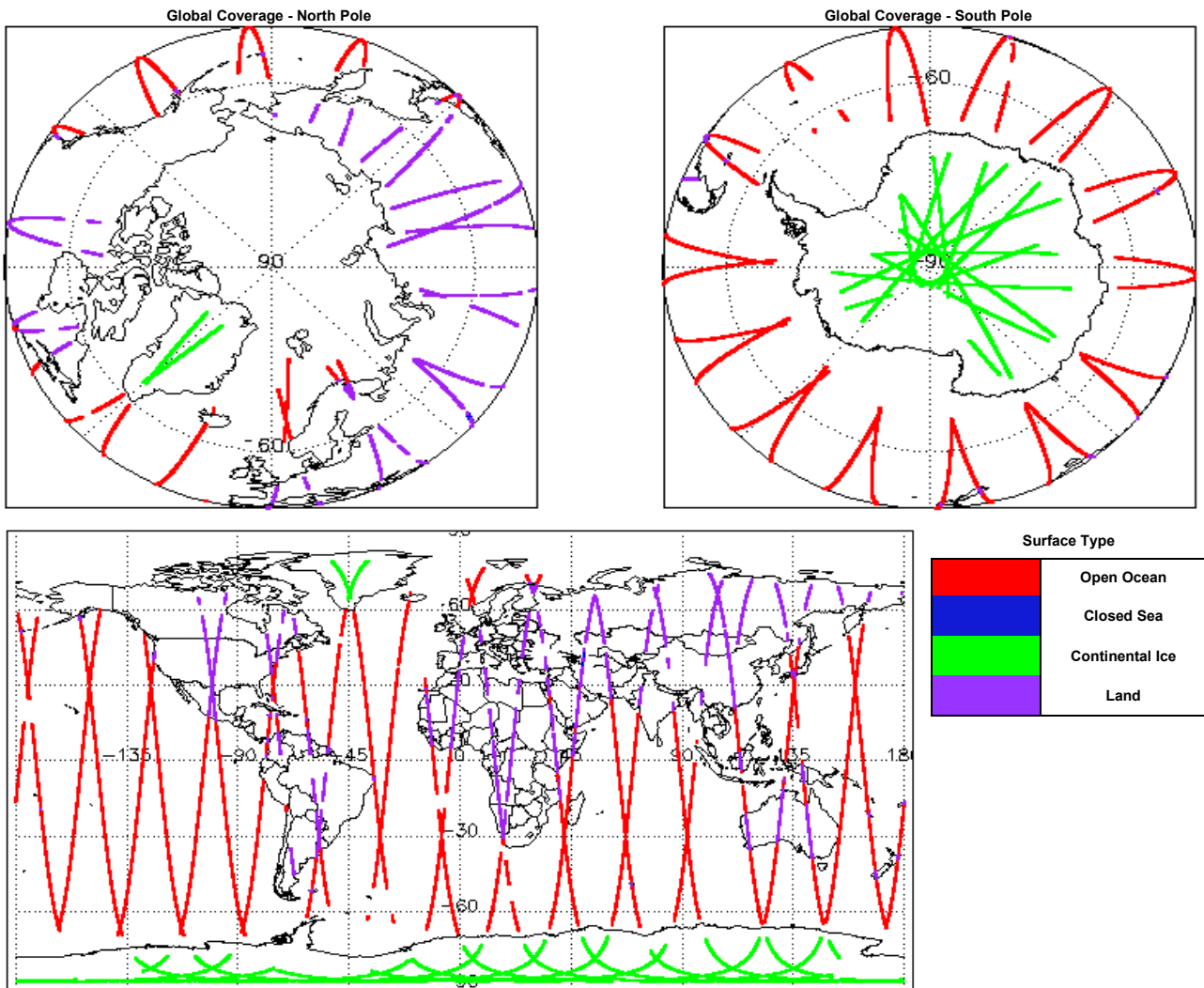
|                                |   |
|--------------------------------|---|
| <b>Report Production Date:</b> | 29-Feb-2016   |
| <b>Processor Used:</b>         | CryoSat Ice Processor                                 |
| <b>Data Used:</b>              | L1 and L2 Fast Delivery Marine (FDM) Mode and L0 Data |

| Check                                     | Status                                 |
|---|--|
| Server check: science-pds.cryosat.esa.int | Nominal                                |
| Server check: calval-pds.cryosat.esa.int  | Nominal                                |
| Product Software Check                    | Nominal                                |
| Product Format Check                      | Nominal                                |
| Product Header Analysis                   | See Section 4.2                        |
| Star Tracker Usage Check                  | See Section 5.3                        |
| Calibration Usage Check                   | Nominal                                |
| Auxiliary Data File Usage Check           | Nominal                                |
| Auxiliary Correction Error Check          | See Section 6.4                        |
| Measurement Confidence Data Check         | See Section 5.7, 6.5, 6.6, 6.7 and 6.8 |

**Mission / Instrument News**

|             |                 |
|-------------|-----------------|
| 26-Feb-2016 | None            |
| 27-Feb-2016 | None            |
| 28-Feb-2016 | Nothing planned |

**2. Global Coverage**



**3. Instrument Configuration**

The SIRAL instrument configuration for the day of acquisition is provided below.

|                                    |                |
|------------------------------------|----------------|
| <b>SIRAL instrument(s) in use:</b> | SIRAL - A      |
| <b>Star Tracker(s) in use:</b>     | Star Tracker 1 |

**4. Level 0 Data Quality Check**

**4.1 L0 Product Format Check**

Each product, retrieved and unpacked from the science server, is checked to ensure it consists of both an XML header file (.HDR) and a binary product file (.DBL).

Number of products with errors: 0

## 4.2 L0 Product Header Analysis

For all products, a series of pre-defined checks are carried out on the MPH and SPH in order to identify any inconsistencies and/or errors raised by the processing chain.

Number of products with errors: 3

| Product  | Test Failed   |
|--|---|
| CS_OPER_SIR1SAR_0_20160227T102822_20160227T103358_0001.HDR | Percentage of processing errors detected greater than minimum acceptable threshold. |
| CS_OPER_SIR1SIN_0_20160227T111532_20160227T112120_0001.HDR | Percentage of processing errors detected greater than minimum acceptable threshold. |
| CS_OPER_SIR1SIN_0_20160227T073517_20160227T073525_0001.HDR | Percentage of processing errors detected greater than minimum acceptable threshold. |

## 5. Level 1B FDM Data Quality Check

### 5.1 L1B FDM Product Format Check

Each product, retrieved and unpacked from the science server, is checked to ensure it consists of both an XML header file (.HDR) and a binary product file (.DBL).

Number of products with errors: 0

### 5.2 L1B FDM Product Header Analysis

For all products, a series of pre-defined checks are carried out on the MPH and SPH in order to identify any inconsistencies and/or errors raised by the ground-segment processing chain.

Number of products with errors: 0

### 5.3 L1B FDM Star Tracker Usage Check

Each product is checked in order to ensure a valid star tracker file has been used in processing.

Number of products with errors: 3

| Product   | Test Failed   |
|---|---|
| CS_OFFL_SIR_FDM_1B_20160227T151930_20160227T152233_C001 | No Star Tracker file used in the processing of this product |
| CS_OFFL_SIR_FDM_1B_20160227T165854_20160227T165948_C001 | No Star Tracker file used in the processing of this product |
| CS_OFFL_SIR_FDM_1B_20160227T183805_20160227T183901_C001 | No Star Tracker file used in the processing of this product |

### 5.4 L1B FDM Calibration Usage Check

Each product is checked in order to ensure the necessary calibration files have been used in processing.

Number of products with errors: 0

### 5.5 L1B FDM Auxiliary Data File Usage Check

Each product is checked for missing Data Set Descriptors with respect to a pre-determined baseline and also to check the validity of Auxiliary Data Files is correct.

Number of products with errors: 0

### 5.6 L1B FDM Auxiliary Correction Error Check

CryoSat L1B data includes a correction error flag (field 54) for each measurement record. The bit value of this flag indicates any problems when set.

Number of products with errors: 0

### 5.7 L1B FDM Measurement Confidence Data Check

CryoSat L1B data includes a measurement confidence flag (field 18) for each measurement record. The bit value of this flag indicates any problems when set.

Number of products with errors: 4

| Product   | Test Failed                 | Description  |
|---|-----------------------------|--|
| CS_OFFL_SIR_FDM_1B_20160227T140104_20160227T143553_C001 | Echo error, TRK echo error  | The tracking echo has returned an error and the Rx1 Echo Error flag is set, indicating a degraded echo |
| CS_OFFL_SIR_FDM_1B_20160227T151930_20160227T152233_C001 | Attitude correction missing | The attitude has not been corrected  |
| CS_OFFL_SIR_FDM_1B_20160227T165854_20160227T165948_C001 | Attitude correction missing | The attitude has not been corrected  |
| CS_OFFL_SIR_FDM_1B_20160227T183805_20160227T183901_C001 | Attitude correction missing | The attitude has not been corrected  |

## 6. Level 2 FDM Data Quality Check

### 6.1 L2 FDM Product Format Check

Each product, retrieved and unpacked from the science server, is checked to ensure it consists of both an XML header file (.HDR) and a binary product file (.DBL).

Number of products with errors: 0

### 6.2 L2 FDM Product Header Analysis

For all products, a series of pre-defined checks are carried out on the MPH and SPH in order to identify any inconsistencies and/or errors raised by the ground-segment processing chain.

Number of products with errors: 0

### 6.3 L2 FDM Auxiliary Data File Usage Check

Each product is checked for missing Data Set Descriptors with respect to a pre-determined baseline and also to check the validity of Auxiliary Data Files is correct.

Number of products with errors: 0

### 6.4 L2 FDM Auxiliary Correction Error Check

Each product is checked to detect auxiliary corrections flagged by the ground-station processing chain as missing or containing errors.

Number of products with errors: 37

| Product  | Test Failed                                      | Description  |
|--|--|--|
| CS_OFFL_SIR_FDM_2_20160227T001547_20160227T001846_C001 | Sea State Bias Correction, Altimetric Wind Speed | There is an error with the Altimetric Wind Speed and Sea State Bias Correction for one or more records |

|   |  |  |
|---|--|--|
| CS_OFFL_SIR_FDM_2__20160227T002009_20160227T002721_C001 | Sea State Bias Correction, Altimetric Wind Speed | There is an error with the Altimetric Wind Speed and Sea State Bias Correction for one or more records |
| CS_OFFL_SIR_FDM_2__20160227T010326_20160227T012040_C001 | Sea State Bias Correction, Altimetric Wind Speed | There is an error with the Altimetric Wind Speed and Sea State Bias Correction for one or more records |
| CS_OFFL_SIR_FDM_2__20160227T023719_20160227T030021_C001 | Sea State Bias Correction                        | There is an error with the Sea State Bias Correction for one or more records                           |
| CS_OFFL_SIR_FDM_2__20160227T040925_20160227T043952_C001 | Sea State Bias Correction, Altimetric Wind Speed | There is an error with the Altimetric Wind Speed and Sea State Bias Correction for one or more records |
| CS_OFFL_SIR_FDM_2__20160227T045203_20160227T052711_C001 | Sea State Bias Correction, Altimetric Wind Speed | There is an error with the Altimetric Wind Speed and Sea State Bias Correction for one or more records |
| CS_OFFL_SIR_FDM_2__20160227T054127_20160227T054215_C001 | Sea State Bias Correction, Altimetric Wind Speed | There is an error with the Altimetric Wind Speed and Sea State Bias Correction for one or more records |
| CS_OFFL_SIR_FDM_2__20160227T063152_20160227T065435_C001 | Sea State Bias Correction, Altimetric Wind Speed | There is an error with the Altimetric Wind Speed and Sea State Bias Correction for one or more records |
| CS_OFFL_SIR_FDM_2__20160227T071855_20160227T072256_C001 | Sea State Bias Correction, Altimetric Wind Speed | There is an error with the Altimetric Wind Speed and Sea State Bias Correction for one or more records |
| CS_OFFL_SIR_FDM_2__20160227T074515_20160227T075832_C001 | Sea State Bias Correction, Altimetric Wind Speed | There is an error with the Altimetric Wind Speed and Sea State Bias Correction for one or more records |
| CS_OFFL_SIR_FDM_2__20160227T081117_20160227T081719_C001 | Sea State Bias Correction                        | There is an error with the Sea State Bias Correction for one or more records                           |
| CS_OFFL_SIR_FDM_2__20160227T081729_20160227T084325_C001 | Sea State Bias Correction                        | There is an error with the Sea State Bias Correction for one or more records                           |
| CS_OFFL_SIR_FDM_2__20160227T090909_20160227T093301_C001 | Sea State Bias Correction, Altimetric Wind Speed | There is an error with the Altimetric Wind Speed and Sea State Bias Correction for one or more records |
| CS_OFFL_SIR_FDM_2__20160227T093626_20160227T093639_C001 | Sea State Bias Correction, Altimetric Wind Speed | There is an error with the Altimetric Wind Speed and Sea State Bias Correction for one or more records |
| CS_OFFL_SIR_FDM_2__20160227T095102_20160227T100853_C001 | Sea State Bias Correction, Altimetric Wind Speed | There is an error with the Altimetric Wind Speed and Sea State Bias Correction for one or more records |
| CS_OFFL_SIR_FDM_2__20160227T101237_20160227T102028_C001 | Sea State Bias Correction, Altimetric Wind Speed | There is an error with the Altimetric Wind Speed and Sea State Bias Correction for one or more records |
| CS_OFFL_SIR_FDM_2__20160227T104201_20160227T104447_C001 | Sea State Bias Correction                        | There is an error with the Sea State Bias Correction for one or more records                           |
| CS_OFFL_SIR_FDM_2__20160227T104552_20160227T105735_C001 | Sea State Bias Correction, Altimetric Wind Speed | There is an error with the Altimetric Wind Speed and Sea State Bias Correction for one or more records |
| CS_OFFL_SIR_FDM_2__20160227T110354_20160227T111532_C001 | Sea State Bias Correction, Altimetric Wind Speed | There is an error with the Altimetric Wind Speed and Sea State Bias Correction for one or more records |
| CS_OFFL_SIR_FDM_2__20160227T113016_20160227T114521_C001 | Sea State Bias Correction, Altimetric Wind Speed | There is an error with the Altimetric Wind Speed and Sea State Bias Correction for one or more records |
| CS_OFFL_SIR_FDM_2__20160227T122354_20160227T123103_C001 | Sea State Bias Correction, Altimetric Wind Speed | There is an error with the Altimetric Wind Speed and Sea State Bias Correction for one or more records |
| CS_OFFL_SIR_FDM_2__20160227T123225_20160227T123712_C001 | Sea State Bias Correction, Altimetric Wind Speed | There is an error with the Altimetric Wind Speed and Sea State Bias Correction for one or more records |
| CS_OFFL_SIR_FDM_2__20160227T123949_20160227T125634_C001 | Sea State Bias Correction, Altimetric Wind Speed | There is an error with the Altimetric Wind Speed and Sea State Bias Correction for one or more records |
| CS_OFFL_SIR_FDM_2__20160227T131005_20160227T133241_C001 | Sea State Bias Correction, Altimetric Wind Speed | There is an error with the Altimetric Wind Speed and Sea State Bias Correction for one or more records |
| CS_OFFL_SIR_FDM_2__20160227T144822_20160227T151621_C001 | Sea State Bias Correction, Altimetric Wind Speed | There is an error with the Altimetric Wind Speed and Sea State Bias Correction for one or more records |
| CS_OFFL_SIR_FDM_2__20160227T154419_20160227T161515_C001 | Sea State Bias Correction                        | There is an error with the Sea State Bias Correction for one or more records                           |
| CS_OFFL_SIR_FDM_2__20160227T162746_20160227T164852_C001 | Sea State Bias Correction, Altimetric Wind Speed | There is an error with the Altimetric Wind Speed and Sea State Bias Correction for one or more records |
| CS_OFFL_SIR_FDM_2__20160227T165053_20160227T165453_C001 | Sea State Bias Correction, Altimetric Wind Speed | There is an error with the Altimetric Wind Speed and Sea State Bias Correction for one or more records |
| CS_OFFL_SIR_FDM_2__20160227T170525_20160227T170611_C001 | Sea State Bias Correction                        | There is an error with the Sea State Bias Correction for one or more records                           |
| CS_OFFL_SIR_FDM_2__20160227T171850_20160227T175352_C001 | Sea State Bias Correction, Altimetric Wind Speed | There is an error with the Altimetric Wind Speed and Sea State Bias Correction for one or more records |
| CS_OFFL_SIR_FDM_2__20160227T181131_20160227T181405_C001 | Sea State Bias Correction                        | There is an error with the Sea State Bias Correction for one or more records                           |
| CS_OFFL_SIR_FDM_2__20160227T194520_20160227T195857_C001 | Sea State Bias Correction, Altimetric Wind Speed | There is an error with the Altimetric Wind Speed and Sea State Bias Correction for one or more records |
| CS_OFFL_SIR_FDM_2__20160227T203901_20160227T211134_C001 | Sea State Bias Correction, Altimetric Wind Speed | There is an error with the Altimetric Wind Speed and Sea State Bias Correction for one or more records |
| CS_OFFL_SIR_FDM_2__20160227T212935_20160227T215946_C001 | Sea State Bias Correction, Altimetric Wind Speed | There is an error with the Altimetric Wind Speed and Sea State Bias Correction for one or more records |
| CS_OFFL_SIR_FDM_2__20160227T222040_20160227T223256_C001 | Sea State Bias Correction, Altimetric Wind Speed | There is an error with the Altimetric Wind Speed and Sea State Bias Correction for one or more records |
| CS_OFFL_SIR_FDM_2__20160227T223500_20160227T225047_C001 | Sea State Bias Correction, Altimetric Wind Speed | There is an error with the Altimetric Wind Speed and Sea State Bias Correction for one or more records |
| CS_OFFL_SIR_FDM_2__20160227T232331_20160227T233443_C001 | Sea State Bias Correction, Altimetric Wind Speed | There is an error with the Altimetric Wind Speed and Sea State Bias Correction for one or more records |

## 6.5 L2 FDM Measurement Confidence Data Check

CryoSat L2 data includes a measurement confidence flag (field 8) for each 20-Hz measurement record. The bit value of this flag indicates any problems when set.

**Number of products with errors:** 4

| Product   | Test Failed                 | Description  |
|---|-----------------------------|--|
| CS_OFFL_SIR_FDM_2__20160227T140104_20160227T143553_C001 | Echo error                  | The Echo Rx1 Error flag is set, indicating a degraded raw echo |
| CS_OFFL_SIR_FDM_2__20160227T151930_20160227T152233_C001 | Attitude correction missing | The attitude has not been corrected                            |
| CS_OFFL_SIR_FDM_2__20160227T165854_20160227T165948_C001 | Attitude correction missing | The attitude has not been corrected                            |
| CS_OFFL_SIR_FDM_2__20160227T183805_20160227T183901_C001 | Attitude correction missing | The attitude has not been corrected                            |

## 6.6 L2 FDM Range Measurement Check

CryoSat L2 data includes a CFI (field 17) and OCOG (field 22) Range Averaging Status flag for each measurement record. The bit value of this flag indicates any problems when set.

**Number of products with errors:** 23

| Product   | Test Failed              | Description   |
|---|--------------------------|---|
| CS_OFFL_SIR_FDM_2__20160227T001547_20160227T001846_C001 | CFI Retracked Range Flag | The master fail flag is set by the CFI call, for one or more records, indicating the values stored in fields #13, #14, #15 and #16 should be ignored for these records. |
| CS_OFFL_SIR_FDM_2__20160227T002009_20160227T002721_C001 | CFI Retracked Range Flag | The master fail flag is set by the CFI call, for one or more records, indicating the values stored in fields #13, #14, #15 and #16 should be ignored for these records. |
| CS_OFFL_SIR_FDM_2__20160227T010326_20160227T012040_C001 | CFI Retracked Range Flag | The master fail flag is set by the CFI call, for one or more records, indicating the values stored in fields #13, #14, #15 and #16 should be ignored for these records. |
| CS_OFFL_SIR_FDM_2__20160227T040925_20160227T043952_C001 | CFI Retracked Range Flag | The master fail flag is set by the CFI call, for one or more records, indicating the values stored in fields #13, #14, #15 and #16 should be ignored for these records. |







|   |                               |  |
|---|-------------------------------|--|
| CS_OFFL_SIR_FDM_2__20160227T203901_20160227T211134_C001 | Ocean Retracking Quality Flag | The Ocean Retracking Quality Flag is set indicating the CFI Ocean Retracker was not successfully executed for one or more records. |
| CS_OFFL_SIR_FDM_2__20160227T212935_20160227T215946_C001 | Ocean Retracking Quality Flag | The Ocean Retracking Quality Flag is set indicating the CFI Ocean Retracker was not successfully executed for one or more records. |
| CS_OFFL_SIR_FDM_2__20160227T222040_20160227T223256_C001 | Ocean Retracking Quality Flag | The Ocean Retracking Quality Flag is set indicating the CFI Ocean Retracker was not successfully executed for one or more records. |
| CS_OFFL_SIR_FDM_2__20160227T223500_20160227T225047_C001 | Ocean Retracking Quality Flag | The Ocean Retracking Quality Flag is set indicating the CFI Ocean Retracker was not successfully executed for one or more records. |
| CS_OFFL_SIR_FDM_2__20160227T232331_20160227T233443_C001 | Ocean Retracking Quality Flag | The Ocean Retracking Quality Flag is set indicating the CFI Ocean Retracker was not successfully executed for one or more records. |

---