

1. Overview

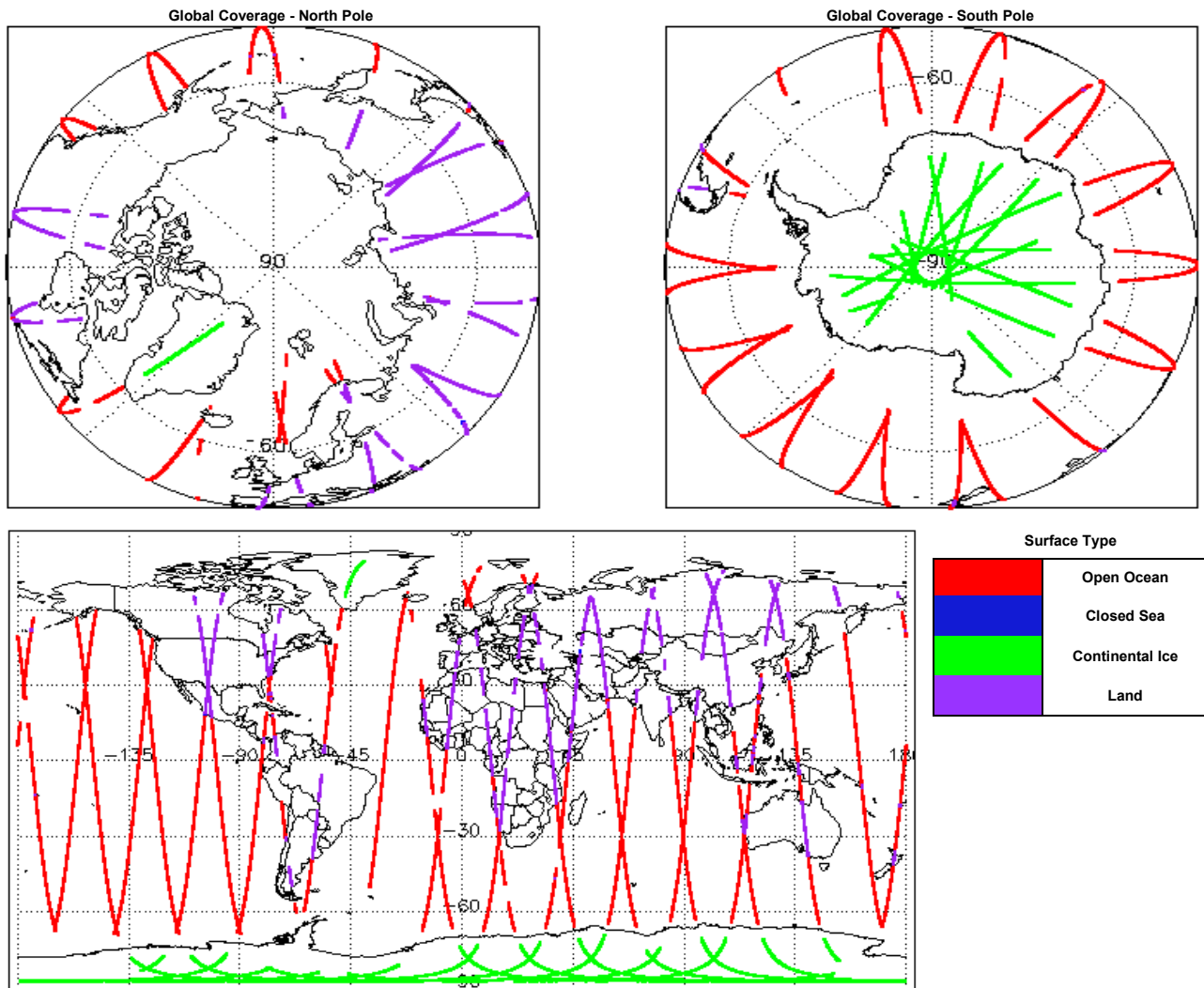
Report Production Date:	05-Feb-2016
Processor Used:	CryoSat Ice Processor
Data Used:	L1 and L2 Fast Delivery Marine (FDM) Mode and L0 Data

Check	Status
Server check: science-pds.cryosat.esa.int	Nominal
Server check: calval-pds.cryosat.esa.int	Nominal
Product Software Check	Nominal
Product Format Check	Nominal
Product Header Analysis	See Section 4.2
Star Tracker Usage Check	See Section 5.3
Calibration Usage Check	Nominal
Auxiliary Data File Usage Check	Nominal
Auxiliary Correction Error Check	See Section 6.4
Measurement Confidence Data Check	See Section 5.7, 6.5, 6.6, 6.7 and 6.8

Mission / Instrument News

03-Feb-2016	None
04-Feb-2016	None
05-Feb-2016	Nothing planned

2. Global Coverage



3. Instrument Configuration

The SIRAL instrument configuration for the day of acquisition is provided below.

SIRAL instrument(s) in use:	SIRAL - A
Star Tracker(s) in use:	Star Tracker 1

4. Level 0 Data Quality Check

4.1 L0 Product Format Check

Each product, retrieved and unpacked from the science server, is checked to ensure it consists of both an XML header file (.HDR) and a binary product file (.DBL).

Number of products with errors: 0

4.2 L0 Product Header Analysis

For all products, a series of pre-defined checks are carried out on the MPH and SPH in order to identify any inconsistencies and/or errors raised by the processing chain.

Number of products with errors: 4

Product	Test Failed
CS_OPER_SIR1SAR_0_20160204T051715_20160204T051829_0001.HDR	Percentage of processing errors detected greater than minimum acceptable threshold.
CS_OPER_SIR1SAR_0_20160204T101253_20160204T101415_0001.HDR	Percentage of processing errors detected greater than minimum acceptable threshold.
CS_OPER_SIR1SAR_0_20160204T205029_20160204T205127_0001.HDR	Percentage of processing errors detected greater than minimum acceptable threshold.
CS_OPER_SIR1SIN_0_20160204T060718_20160204T060829_0001.HDR	Percentage of processing errors detected greater than minimum acceptable threshold.

5. Level 1B FDM Data Quality Check

5.1 L1B FDM Product Format Check

Each product, retrieved and unpacked from the science server, is checked to ensure it consists of both an XML header file (.HDR) and a binary product file (.DBL).

Number of products with errors: 0

5.2 L1B FDM Product Header Analysis

For all products, a series of pre-defined checks are carried out on the MPH and SPH in order to identify any inconsistencies and/or errors raised by the ground-segment processing chain.

Number of products with errors: 0

5.3 L1B FDM Star Tracker Usage Check

Each product is checked in order to ensure a valid star tracker file has been used in processing.

Number of products with errors: 4

Product	Test Failed
CS_OFFL_SIR_FDM_1B_20160204T163453_20160204T163958_C001	No Star Tracker file used in the processing of this product
CS_OFFL_SIR_FDM_1B_20160204T181624_20160204T181724_C001	No Star Tracker file used in the processing of this product
CS_OFFL_SIR_FDM_1B_20160204T195534_20160204T195649_C001	No Star Tracker file used in the processing of this product
CS_OFFL_SIR_FDM_1B_20160204T213726_20160204T213831_C001	No Star Tracker file used in the processing of this product

5.4 L1B FDM Calibration Usage Check

Each product is checked in order to ensure the necessary calibration files have been used in processing.

Number of products with errors: 0

5.5 L1B FDM Auxiliary Data File Usage Check

Each product is checked for missing Data Set Descriptors with respect to a pre-determined baseline and also to check the validity of Auxiliary Data Files is correct.

Number of products with errors: 0

5.6 L1B FDM Auxiliary Correction Error Check

CryoSat L1B data includes a correction error flag (field 54) for each measurement record. The bit value of this flag indicates any problems when set.

Number of products with errors: 0

5.7 L1B FDM Measurement Confidence Data Check

CryoSat L1B data includes a measurement confidence flag (field 18) for each measurement record. The bit value of this flag indicates any problems when set.

Number of products with errors: 4

Product	Test Failed	Description
CS_OFFL_SIR_FDM_1B_20160204T163453_20160204T163958_C001	Attitude correction missing	The attitude has not been corrected
CS_OFFL_SIR_FDM_1B_20160204T181624_20160204T181724_C001	Attitude correction missing	The attitude has not been corrected
CS_OFFL_SIR_FDM_1B_20160204T195534_20160204T195649_C001	Attitude correction missing	The attitude has not been corrected
CS_OFFL_SIR_FDM_1B_20160204T213726_20160204T213831_C001	Attitude correction missing	The attitude has not been corrected

6. Level 2 FDM Data Quality Check

6.1 L2 FDM Product Format Check

Each product, retrieved and unpacked from the science server, is checked to ensure it consists of both an XML header file (.HDR) and a binary product file (.DBL).

Number of products with errors: 0

6.2 L2 FDM Product Header Analysis

For all products, a series of pre-defined checks are carried out on the MPH and SPH in order to identify any inconsistencies and/or errors raised by the ground-segment processing chain.

Number of products with errors: 0

6.3 L2 FDM Auxiliary Data File Usage Check

Each product is checked for missing Data Set Descriptors with respect to a pre-determined baseline and also to check the validity of Auxiliary Data Files is correct.

Number of products with errors: 0

6.4 L2 FDM Auxiliary Correction Error Check

Each product is checked to detect auxiliary corrections flagged by the ground-station processing chain as missing or containing errors.

Number of products with errors: 29

Product	Test Failed	Description
CS_OFFL_SIR_FDM_2__20160204T003215_20160204T004240_C001	Sea State Bias Correction, Altimetric Wind Speed	There is an error with the Altimetric Wind Speed and Sea State Bias Correction for one or more records
CS_OFFL_SIR_FDM_2__20160204T004420_20160204T005918_C001	Sea State Bias Correction, Altimetric Wind Speed	There is an error with the Altimetric Wind Speed and Sea State Bias Correction for one or more records
CS_OFFL_SIR_FDM_2__20160204T012233_20160204T012643_C001	Sea State Bias Correction	There is an error with the Sea State Bias Correction for one or more records
CS_OFFL_SIR_FDM_2__20160204T013751_20160204T014501_C001	Sea State Bias Correction, Altimetric Wind Speed	There is an error with the Altimetric Wind Speed and Sea State Bias Correction for one or more records
CS_OFFL_SIR_FDM_2__20160204T052913_20160204T054846_C001	Sea State Bias Correction	There is an error with the Sea State Bias Correction for one or more records
CS_OFFL_SIR_FDM_2__20160204T060945_20160204T064435_C001	Sea State Bias Correction, Altimetric Wind Speed	There is an error with the Altimetric Wind Speed and Sea State Bias Correction for one or more records
CS_OFFL_SIR_FDM_2__20160204T065806_20160204T065856_C001	Sea State Bias Correction, Altimetric Wind Speed	There is an error with the Altimetric Wind Speed and Sea State Bias Correction for one or more records
CS_OFFL_SIR_FDM_2__20160204T065914_20160204T065959_C001	Sea State Bias Correction, Altimetric Wind Speed	There is an error with the Altimetric Wind Speed and Sea State Bias Correction for one or more records
CS_OFFL_SIR_FDM_2__20160204T072747_20160204T073715_C001	Sea State Bias Correction, Altimetric Wind Speed	There is an error with the Altimetric Wind Speed and Sea State Bias Correction for one or more records
CS_OFFL_SIR_FDM_2__20160204T074930_20160204T081217_C001	Sea State Bias Correction, Altimetric Wind Speed	There is an error with the Altimetric Wind Speed and Sea State Bias Correction for one or more records
CS_OFFL_SIR_FDM_2__20160204T081502_20160204T082432_C001	Sea State Bias Correction, Altimetric Wind Speed	There is an error with the Altimetric Wind Speed and Sea State Bias Correction for one or more records
CS_OFFL_SIR_FDM_2__20160204T092909_20160204T100125_C001	Sea State Bias Correction, Altimetric Wind Speed	There is an error with the Altimetric Wind Speed and Sea State Bias Correction for one or more records
CS_OFFL_SIR_FDM_2__20160204T101830_20160204T101835_C001	Sea State Bias Correction, Altimetric Wind Speed	There is an error with the Altimetric Wind Speed and Sea State Bias Correction for one or more records
CS_OFFL_SIR_FDM_2__20160204T110842_20160204T113753_C001	Sea State Bias Correction, Altimetric Wind Speed	There is an error with the Altimetric Wind Speed and Sea State Bias Correction for one or more records
CS_OFFL_SIR_FDM_2__20160204T115934_20160204T120145_C001	Sea State Bias Correction, Altimetric Wind Speed	There is an error with the Altimetric Wind Speed and Sea State Bias Correction for one or more records
CS_OFFL_SIR_FDM_2__20160204T120333_20160204T121520_C001	Sea State Bias Correction, Altimetric Wind Speed	There is an error with the Altimetric Wind Speed and Sea State Bias Correction for one or more records
CS_OFFL_SIR_FDM_2__20160204T124153_20160204T124618_C001	Sea State Bias Correction, Altimetric Wind Speed	There is an error with the Altimetric Wind Speed and Sea State Bias Correction for one or more records
CS_OFFL_SIR_FDM_2__20160204T124758_20160204T130302_C001	Sea State Bias Correction, Altimetric Wind Speed	There is an error with the Altimetric Wind Speed and Sea State Bias Correction for one or more records
CS_OFFL_SIR_FDM_2__20160204T130442_20160204T130853_C001	Sea State Bias Correction, Altimetric Wind Speed	There is an error with the Altimetric Wind Speed and Sea State Bias Correction for one or more records
CS_OFFL_SIR_FDM_2__20160204T134136_20160204T134846_C001	Sea State Bias Correction, Altimetric Wind Speed	There is an error with the Altimetric Wind Speed and Sea State Bias Correction for one or more records
CS_OFFL_SIR_FDM_2__20160204T135009_20160204T141418_C001	Sea State Bias Correction, Altimetric Wind Speed	There is an error with the Altimetric Wind Speed and Sea State Bias Correction for one or more records
CS_OFFL_SIR_FDM_2__20160204T160610_20160204T163448_C001	Sea State Bias Correction, Altimetric Wind Speed	There is an error with the Altimetric Wind Speed and Sea State Bias Correction for one or more records
CS_OFFL_SIR_FDM_2__20160204T170031_20160204T173252_C001	Sea State Bias Correction	There is an error with the Sea State Bias Correction for one or more records
CS_OFFL_SIR_FDM_2__20160204T174525_20160204T181157_C001	Sea State Bias Correction, Altimetric Wind Speed	There is an error with the Altimetric Wind Speed and Sea State Bias Correction for one or more records
CS_OFFL_SIR_FDM_2__20160204T182308_20160204T182351_C001	Sea State Bias Correction, Altimetric Wind Speed	There is an error with the Altimetric Wind Speed and Sea State Bias Correction for one or more records
CS_OFFL_SIR_FDM_2__20160204T183640_20160204T191142_C001	Sea State Bias Correction, Altimetric Wind Speed	There is an error with the Altimetric Wind Speed and Sea State Bias Correction for one or more records
CS_OFFL_SIR_FDM_2__20160204T192915_20160204T193255_C001	Sea State Bias Correction, Altimetric Wind Speed	There is an error with the Altimetric Wind Speed and Sea State Bias Correction for one or more records
CS_OFFL_SIR_FDM_2__20160204T193341_20160204T194057_C001	Sea State Bias Correction, Altimetric Wind Speed	There is an error with the Altimetric Wind Speed and Sea State Bias Correction for one or more records
CS_OFFL_SIR_FDM_2__20160204T202810_20160204T205029_C001	Sea State Bias Correction, Altimetric Wind Speed	There is an error with the Altimetric Wind Speed and Sea State Bias Correction for one or more records

6.5 L2 FDM Measurement Confidence Data Check

CryoSat L2 data includes a measurement confidence flag (field 8) for each 20-Hz measurement record. The bit value of this flag indicates any problems when set.

Number of products with errors: 4

Product	Test Failed	Description
CS_OFFL_SIR_FDM_2__20160204T163453_20160204T163958_C001	Attitude correction missing	The attitude has not been corrected
CS_OFFL_SIR_FDM_2__20160204T181624_20160204T181724_C001	Attitude correction missing	The attitude has not been corrected
CS_OFFL_SIR_FDM_2__20160204T195534_20160204T195649_C001	Attitude correction missing	The attitude has not been corrected
CS_OFFL_SIR_FDM_2__20160204T213726_20160204T213831_C001	Attitude correction missing	The attitude has not been corrected

6.6 L2 FDM Range Measurement Check

CryoSat L2 data includes a CFI (field 17) and OCOG (field 22) Range Averaging Status flag for each measurement record. The bit value of this flag indicates any problems when set.

Number of products with errors: 17

Product	Test Failed	Description
CS_OFFL_SIR_FDM_2__20160204T003215_20160204T004240_C001	CFI Retracked Range Flag	The master fail flag is set by the CFI call, for one or more records, indicating the values stored in fields #13, #14, #15 and #16 should be ignored for these records.
CS_OFFL_SIR_FDM_2__20160204T004420_20160204T005918_C001	CFI Retracked Range Flag	The master fail flag is set by the CFI call, for one or more records, indicating the values stored in fields #13, #14, #15 and #16 should be ignored for these records.
CS_OFFL_SIR_FDM_2__20160204T013751_20160204T014501_C001	CFI Retracked Range Flag	The master fail flag is set by the CFI call, for one or more records, indicating the values stored in fields #13, #14, #15 and #16 should be ignored for these records.
CS_OFFL_SIR_FDM_2__20160204T060945_20160204T064435_C001	CFI Retracked Range Flag	The master fail flag is set by the CFI call, for one or more records, indicating the values stored in fields #13, #14, #15 and #16 should be ignored for these records.
CS_OFFL_SIR_FDM_2__20160204T065914_20160204T065959_C001	CFI Retracked Range Flag	The master fail flag is set by the CFI call, for one or more records, indicating the values stored in fields #13, #14, #15 and #16 should be ignored for these records.
CS_OFFL_SIR_FDM_2__20160204T074930_20160204T081217_C001	CFI Retracked Range Flag	The master fail flag is set by the CFI call, for one or more records, indicating the values stored in fields #13, #14, #15 and #16 should be ignored for these records.
CS_OFFL_SIR_FDM_2__20160204T092909_20160204T100125_C001	CFI Retracked Range Flag	The master fail flag is set by the CFI call, for one or more records, indicating the values stored in fields #13, #14, #15 and #16 should be ignored for these records.
CS_OFFL_SIR_FDM_2__20160204T110842_20160204T113753_C001	CFI Retracked Range Flag	The master fail flag is set by the CFI call, for one or more records, indicating the values stored in fields #13, #14, #15 and #16 should be ignored for these records.

