

1. Overview

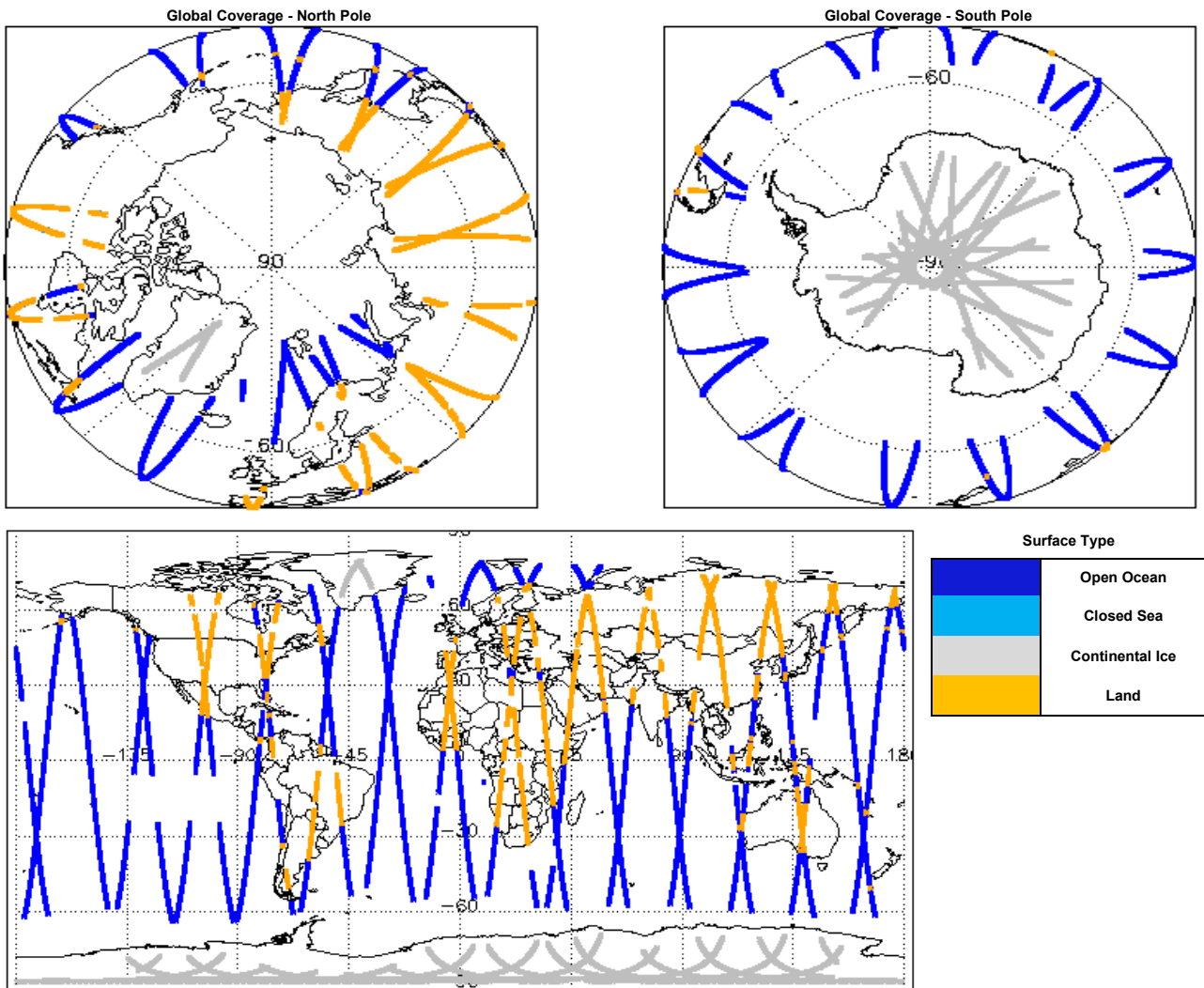
| | |
|-------------------------|---|
| Report Production Date: | 16-Oct-2015 |
| Processor Used: | CryoSat Ice Processor |
| Data Used: | L1 and L2 Fast Delivery Marine (FDM) Mode and L0 Data |

| Check | Status |
|---|-----------------------------------|
| Server check: science-pds.cryosat.esa.int | Nominal |
| Server check: calval-pds.cryosat.esa.int | Nominal |
| Product Software Check | Nominal |
| Product Format Check | Nominal |
| Product Header Analysis | See Section 4.2 |
| Star Tracker Usage Check | See Section 5.3 |
| Calibration Usage Check | Nominal |
| Auxiliary Data File Usage Check | Nominal |
| Auxiliary Correction Error Check | See Section 6.4 |
| Measurement Confidence Data Check | See Section 5.7, 6.6, 6.7 and 6.8 |

Mission / Instrument News

| | |
|-------------|-----------------|
| 14-Oct-2015 | None |
| 15-Oct-2015 | None |
| 16-Oct-2015 | Nothing planned |

2. Global Coverage



3. Instrument Configuration

The SIRAL instrument configuration for the day of acquisition is provided below.

| | |
|-----------------------------|----------------|
| SIRAL instrument(s) in use: | SIRAL - A |
| Star Tracker(s) in use: | Star Tracker 1 |

4. Level 0 Data Quality Check

4.1 L0 Product Format Check

Each product, retrieved and unpacked from the science server, is checked to ensure it consists of both an XML header file (.HDR) and a binary product file (.DBL).

Number of products with errors: 0

4.2 L0 Product Header Analysis

For all products, a series of pre-defined checks are carried out on the MPH and SPH in order to identify any inconsistencies and/or errors raised by the processing chain.

Number of products with errors: 0

5. Level 1B FDM Data Quality Check

5.1 L1B FDM Product Format Check

Each product, retrieved and unpacked from the science server, is checked to ensure it consists of both an XML header file (.HDR) and a binary product file (.DBL).

Number of products with errors: 0

5.2 L1B FDM Product Header Analysis

For all products, a series of pre-defined checks are carried out on the MPH and SPH in order to identify any inconsistencies and/or errors raised by the ground-segment processing chain.

Number of products with errors: 0

5.3 L1B FDM Star Tracker Usage Check

Each product is checked in order to ensure a valid star tracker file has been used in processing.

Number of products with errors: 4

| Product | Test Failed |
|---|---|
| CS_OFFL_SIR_FDM_1B_20151015T004222_20151015T004251_C001 | No Star Tracker file used in the processing of this product |
| CS_OFFL_SIR_FDM_1B_20151015T220827_20151015T221442_C001 | No Star Tracker file used in the processing of this product |
| CS_OFFL_SIR_FDM_1B_20151015T235109_20151015T235211_C001 | No Star Tracker file used in the processing of this product |
| CS_OFFL_SIR_FDM_1B_20151015T235212_20151015T235212_C001 | No Star Tracker file used in the processing of this product |

5.4 L1B FDM Calibration Usage Check

Each product is checked in order to ensure the necessary calibration files have been used in processing.

Number of products with errors: 0

5.5 L1B FDM Auxiliary Data File Usage Check

Each product is checked for missing Data Set Descriptors with respect to a pre-determined baseline and also to check the validity of Auxiliary Data Files is correct.

Number of products with errors: 0

5.6 L1B FDM Auxiliary Correction Error Check

CryoSat L1B data includes a correction error flag (field 54) for each measurement record. The bit value of this flag indicates any problems when set.

Number of products with errors: 0

5.7 L1B FDM Measurement Confidence Data Check

CryoSat L1B data includes a measurement confidence flag (field 18) for each measurement record. The bit value of this flag indicates any problems when set.

Number of products with errors: 6

| Product | Test Failed | Description |
|---|-----------------------------|--|
| CS_OFFL_SIR_FDM_1B_20151015T004222_20151015T004251_C001 | Attitude correction missing | The attitude has not been corrected |
| CS_OFFL_SIR_FDM_1B_20151015T060705_20151015T061729_C001 | Echo error, TRK echo error | The tracking echo has returned an error and the Rx1 Echo Error flag is set, indicating a degraded echo |
| CS_OFFL_SIR_FDM_1B_20151015T220827_20151015T221442_C001 | Attitude correction missing | The attitude has not been corrected |
| CS_OFFL_SIR_FDM_1B_20151015T235109_20151015T235211_C001 | Attitude correction missing | The attitude has not been corrected |
| CS_OFFL_SIR_FDM_1B_20151015T235212_20151015T235212_C001 | Attitude correction missing | The attitude has not been corrected |
| CS_OFFL_SIR_FDM_1B_20151015T235245_20151015T235426_C001 | Echo error, TRK echo error | The tracking echo has returned an error and the Rx1 Echo Error flag is set, indicating a degraded echo |

6. Level 2 FDM Data Quality Check

6.1 L2 FDM Product Format Check

Each product, retrieved and unpacked from the science server, is checked to ensure it consists of both an XML header file (.HDR) and a binary product file (.DBL).

Number of products with errors: 0

6.2 L2 FDM Product Header Analysis

For all products, a series of pre-defined checks are carried out on the MPH and SPH in order to identify any inconsistencies and/or errors raised by the ground-segment processing chain.

Number of products with errors: 0

6.3 L2 FDM Auxiliary Data File Usage Check

Each product is checked for missing Data Set Descriptors with respect to a pre-determined baseline and also to check the validity of Auxiliary Data Files is correct.

Number of products with errors: 0

6.4 L2 FDM Auxiliary Correction Error Check

Each product is checked to detect auxiliary corrections flagged by the ground-station processing chain as missing or containing errors.

Number of products with errors: 32

| Product | Test Failed | Description |
|--|--|--|
| CS_OFFL_SIR_FDM_2_20151015T010254_20151015T013553_C001 | Sea State Bias Correction, Altimetric Wind Speed | There is an error with the Altimetric Wind Speed and Sea State Bias Correction for one or more records |
| CS_OFFL_SIR_FDM_2_20151015T023914_20151015T031436_C001 | Sea State Bias Correction, Altimetric Wind Speed | There is an error with the Altimetric Wind Speed and Sea State Bias Correction for one or more records |
| CS_OFFL_SIR_FDM_2_20151015T041754_20151015T043228_C001 | Sea State Bias Correction, Altimetric Wind Speed | There is an error with the Altimetric Wind Speed and Sea State Bias Correction for one or more records |
| CS_OFFL_SIR_FDM_2_20151015T043710_20151015T045357_C001 | Sea State Bias Correction, Altimetric Wind Speed | There is an error with the Altimetric Wind Speed and Sea State Bias Correction for one or more records |
| CS_OFFL_SIR_FDM_2_20151015T051215_20151015T052523_C001 | Sea State Bias Correction, Altimetric Wind Speed | There is an error with the Altimetric Wind Speed and Sea State Bias Correction for one or more records |

