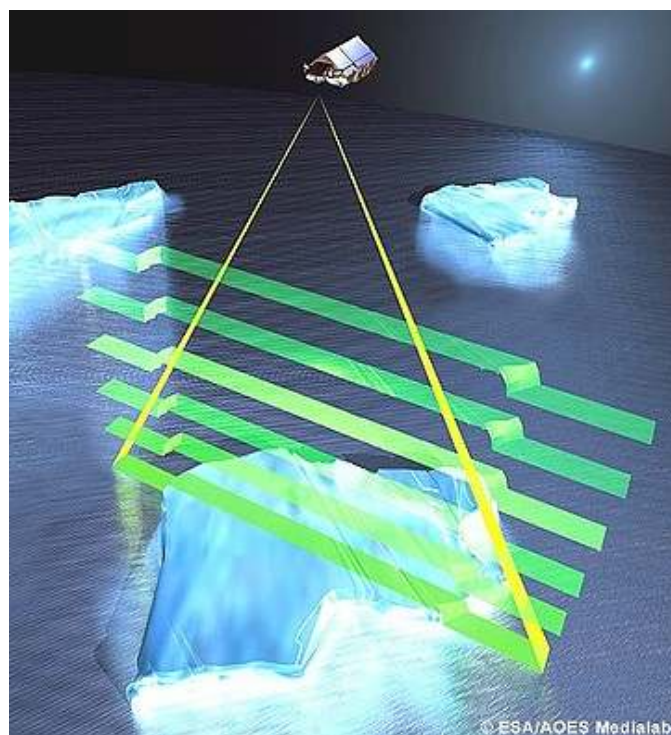


# **CRYOSAT**

## **CYCLIC REPORT**



### **CYCLE #24**

## **7<sup>TH</sup> SEPTEMBER 2012 – 6<sup>TH</sup> OCTOBER 2012**

---

Prepared by / préparé par	CryoSat IDEAS Team
Reference / référence	
Issue / édition	2
Revision / révision	0
Date of issue / date d'édition	19 August 2013
Document type / type de document	Technical Note

**A P P R O V A L**

Title <i>titre</i>	CryoSat Cyclic Report – Cycle 24	Issue 2 <i>issue</i>	Revision 0 <i>revision</i>
-----------------------	----------------------------------	-------------------------	-------------------------------

Author <i>auteur</i>	IDEAS CryoSat QC Team	Date <i>date</i>	19 August 2013
-------------------------	-----------------------	---------------------	-------------------

**C H A N G E L O G**

Reason for change <i>raison du changement</i>	Issue <i>issue</i>	Revision <i>revision</i>	Date <i>date</i>
		0	

**C H A N G E R E C O R D**

ISSUE: 2 REVISION: 0

Reason for change <i>raison du changement</i>	Page(s) <i>page(s)</i>	Paragraph(s)/ <i>paragraph(s)</i>

## T A B L E O F C O N T E N T S

<b>1 INTRODUCTION .....</b>	<b>1</b>
1.1 Acronyms and Abbreviations .....	2
1.2 Referenced Documents .....	2
<b>2 CYCLE OVERVIEW .....</b>	<b>3</b>
<b>3 SOFTWARE &amp; AUX FILE VERSION CONFIGURATION .....</b>	<b>4</b>
3.1 IPF Software Version .....	4
3.2 Processor Versions for IPF1 and IPF2.....	4
3.3 Auxiliary Files.....	5
3.3.1 Static Auxiliary Files .....	5
3.3.2 Dynamic Auxiliary Files .....	6
3.3.3 Changes of Auxiliary Files during the cycle.....	6
<b>4 PDS STATUS .....</b>	<b>7</b>
4.1 SIRAL Instrument Unavailability .....	7
4.2 SIRAL Level 0 Data Availability .....	7
4.3 SIRAL Level 1B and Level 2 Data Availability.....	8
<b>5 SIRAL HEALTH MONITORING .....</b>	<b>9</b>
5.1 Loss of Track .....	9
5.2 Acquisition Analysis .....	10
<b>6 DATA QUALITY CONTROL.....</b>	<b>11</b>
6.1 Product Format Checks .....	11
6.2 Software Version Checks.....	11
6.3 Auxiliary Data File Usage Checks.....	11
6.4 Product Parameters.....	12
6.4.1 Monitoring of SIRAL Mode Changes .....	12
6.4.2 Surface Type.....	14
6.4.3 Backscatter (Sigma0).....	15
6.4.4 Waveform Peakiness .....	18
6.4.5 Freeboard.....	21
6.4.6 Snow Depth.....	21
6.4.7 Sea Ice Concentration.....	22
6.4.8 Snow Density .....	22
6.4.9 Surface Height .....	22
6.5 Quality Flags.....	24
6.6 Crossover Analysis .....	25
6.6.1 CrossOver Statistics.....	25
6.6.2 Elevation Maps.....	26
6.6.3 Backscatter (sigma0) Maps.....	28
6.7 External Auxiliary Corrections.....	30
6.7.1 Dry Tropospheric Correction .....	30
6.7.2 Wet Tropospheric Correction .....	31

6.7.3 Inverse Barometric correction .....	33
6.7.4 Dynamic Atmosphere correction .....	34
6.7.5 Ionospheric Correction .....	36
<b>7 ANOMALY REPORTS .....</b>	<b>38</b>
<b>8 README DOCUMENTS ON PERFORMANCE AND QUALITY.....</b>	<b>39</b>

# 1 INTRODUCTION

CryoSat is an altimetry satellite built by the European Space Agency and dedicated to polar observation. It embarks on a three-and-a-half-year mission to determine variations in the thickness of the Earth's continental ice sheets and marine ice cover, and to test the prediction of thinning Arctic ice due to climate change.

CryoSat is designed to acquire continuously, switching automatically between its three measurement modes according to a Geographical Mode Mask:

- Synthetic Aperture Radar (SAR) is operated over sea-ice and over some ocean basins and coastal zones.
- SAR Interferometric (SARIn) mode is used over steeply sloping ice-sheet margins, small ice caps and areas of mountain glaciers. It is also used over some major hydrological river basins and some ocean areas with important mesoscale variability.
- Low Resolution Mode (LRM) is operated over the areas of the continental ice sheets, over oceans and over land not covered by other modes.

This CryoSat Cyclic Report is distributed by the IDEAS team to keep the CryoSat community informed of the overall mission performance and the status of the SIRAL instrument.

The report is based on a 30-day reporting period, which has been defined by UCL/MSSL since the Transfer to Operations, as part of the routine QA monitoring activity. This 30-day cycle has been defined purely for the purpose of statistic reporting and does not correspond to an official 30-day sub cycle. The actual repeat cycle for CryoSat is 369 days, which consists of 5344 orbits.

This document is available online at: <http://earth.eo.esa.int/missions/cryosat/reports/cyclic/>.

## 1.1 *Acronyms and Abbreviations*

AR	Anomaly Report
CPOM	Centre for Polar Observation Modelling
ESOC	European Space Operation Centre
FDM	Fast Delivery Mode
IDEAS	Instrument Data quality Evaluation and Analysis Service
IPF	Instrument Processing Facilities
L1B/L2	Level 1B / Level 2
LRM	Low Resolution Mode
LTA	Long Term Archive
MF	Monitoring Facility
MSSL	Mullard Space Science Laboratory
NRT	Near Real Time
OCM	Orbit Control Manoeuvre
PDS	Payload Data System
QA	Quality Assurance
QCC	Quality Control for CryoSat
SAR	Synthetic Aperture Radar mode
SARIn	SAR Interferometric mode
SIRAL	SAR /Interferometric Radar Altimeter
SPR	Software Problem Report
SW	Software
TTO	Transfer to Operations
UCL	University College London

## 1.2 *Referenced Documents*

RD.1	CRYOSAT Ground Segment Instrument Processing Facility L1b Products Format Specification, CS-RS-ACS-GS-5106, 4.9
RD.2	CRYOSAT Ground Segment Instrument Processing Facility L2 Products Format Specification, CS-RS-ACS-GS-5123, 2.8
RD.3	Updated List of CryoSat IPF Anomalies. Latest version is available online at: <a href="http://earth.eo.esa.int/missions/cryosat/data_status/">http://earth.eo.esa.int/missions/cryosat/data_status/</a>

## 2 CYCLE OVERVIEW

**Cyclic Number:** 24  
**Cycle Start:** 7<sup>th</sup> September 2012  
**Cycle End:** 6<sup>th</sup> October 2012

There were no major activities affecting CryoSat data during this reporting period.

The health of the SIRAL instrument and the quality of all Level 1B and Level 2 data products was nominal throughout this cycle.

## 3 SOFTWARE & AUX FILE VERSION CONFIGURATION

### 3.1 IPF Software Version

The current versions of the IPF software installed within the PDS and LTA are listed below:

CryoSat IPF for Level 1 (IPF1): Version **Vk1.0**

CryoSat IPF for Level 2 (IPF2): Version **Vj1.2**

### 3.2 Processor Versions for IPF1 and IPF2

The current versions of each processor versions within IPF1 and IPF2 are listed below:

L1B Products	Processor Version
L1B LRM	SIR1LRM/4.0
L1B SAR	SIR1SAR/4.0
L1B SARIN	SARIN/4.0
L1B FDM	SIR1FDM/2.3
CAL1 LRM	SIR1LRC1/3.9
CAL1 SAR	SIR1SAC1/3.9
CAL1 SARIN	SIR_SIC1/3.9
CAL2 SAR	SIR1SAC2/4.0
CAL2 SARIN (RX1 and RX2)	SIR1SIC2/3.9

**Table 3-1 IPF1 Processor Versions.**

L2 Products	Processor Version
L2 FDM	IPF2FDM/2.1
L2 LRM	IPF2LRM/2.4
L2 SAR	IPF2SAR_A/2.4
L2 SARIN	IPF2SRN/2.4
L2 GDR	IPF2GDR_A/2.4

**Table 3-2 IPF2 Processor Versions.**

The complete historic IPF baseline is available online at:

[http://earth.eo.esa.int/missions/cryosat/ipf\\_baseline/](http://earth.eo.esa.int/missions/cryosat/ipf_baseline/).



### 3.3 Auxiliary Files

#### 3.3.1 STATIC AUXILIARY FILES

CryoSat processing for this reporting period used the following static auxiliary files:

Static Auxiliary File	Current ADF in use
Cartwright Table (Solid Earth Tide)	CS_OPER_AUX_CARTWR_0000000T000000_9999999T999999_0002
Digital Surface Model	CS_OPER_AUX_DEMMSL_0000000T000000_9999999T999999_0005
Bent Modified Dip Map Model	CS_OPER_AUX_DIPMAP_0000000T000000_9999999T999999_0002
Geoid	CS_OPER_AUX_GEOID__0000000T000000_9999999T999999_0002
Surface Identification Grid	CS_OPER_AUX_LS_MAP_0000000T000000_9999999T999999_0001
Bent Ionospheric Correction File	CS_OPER_AUX_MICOEF_0000000T000000_9999999T999999_0002
Mean Sea Surface	CS_OPER_AUX_MSSURF_0000000T000000_9999999T999999_0005
Ocean Tides	CS_OPER_AUX_OCTIDE_0000000T000000_9999999T999999_0003
Ocean Depth/Land Elevation Grid	CS_OPER_AUX_ODLE___0000000T000000_9999999T999999_0002
Climatology pressure grids for each month at 00h	CS_OPER_AUX_PRSS00_0000000T000000_9999999T999999_0001
Climatology pressure grids for each month at 06h	CS_OPER_AUX_PRSS06_0000000T000000_9999999T999999_0001
Climatology pressure grids for each month at 12h	CS_OPER_AUX_PRSS12_0000000T000000_9999999T999999_0001
Climatology pressure grids for each month at 18h	CS_OPER_AUX_PRSS18_0000000T000000_9999999T999999_0001
S1 tide grid of monthly mean of global amplitude	CS_OPER_AUX_S1AMPL_0000000T000000_9999999T999999_0001
S2 tide grid of monthly mean of global amplitude	CS_OPER_AUX_S2AMPL_0000000T000000_9999999T999999_0001
S1 tide grid of monthly mean of global phase	CS_OPER_AUX_S1PHAS_0000000T000000_9999999T999999_0001
S2 tide grid of monthly mean of global phase	CS_OPER_AUX_S2PHAS_0000000T000000_9999999T999999_0001
Snow Depth Climatology File for September	CS_OPER_AUX_SDC_09_0000000T000000_9999999T999999_0005
Snow Depth Climatology File for October	CS_OPER_AUX_SDC_10_0000000T000000_9999999T999999_0005
Sea Ice Concentration Climatology for September	CS_OPER_AUX_SICC09_0000000T000000_9999999T999999_0005
Sea Ice Concentration Climatology for October	CS_OPER_AUX_SICC10_0000000T000000_9999999T999999_0005
Sea State Bias	CS_OPER_AUX_SSBIAAS_0000000T000000_9999999T999999_0003
Tidal Loading	CS_OPER_AUX_TDLOAD_0000000T000000_9999999T999999_0003
Altimeter Wind Speed table (Abdalla2007 Model)	CS_OPER_AUX_WNDCHE_0000000T000000_9999999T999999_0001

**Table 3-3 List of current static auxiliary files in use.**

### 3.3.2 DYNAMIC AUXILIARY FILES

CryoSat processing for this reporting period also used the following dynamic auxiliary files:

Dynamic Auxiliary File	Current ADF in use
Solar Activity Index	CS_OPER_AUX_SUNACT_19910101T000000_20131001T000000_0001; CS_OPER_AUX_SUNACT_19910101T000000_20131101T000000_0001
Gaussian Altimetric Grid	CS_OPER_AUX_ALTGRD_20110504T100000_20301231T235959_0002
GPS Ionospheric Map	CS_OPER_AUX_IONGIM_YYYYMMDDT000000_YYYYMMDDT235959 <i>Updated daily</i>
Polar Location	CS_OPER_AUX_POLLOC_19870101T000000_YYYYMMDDT000000 <i>Updated twice a week</i>
Wet Troposphere	CS_OPER_AUX_WETTRP_YYYYMMDDTxx0000_YYYYMMDDTxx0000 <i>Meteo File *</i>
Wind U-component	CS_OPER_AUX_U_WIND_YYYYMMDDTxx0000_YYYYMMDDTxx0000 <i>Meteo File *</i>
Wind V-component	CS_OPER_AUX_V_WIND_YYYYMMDDTxx0000_YYYYMMDDTxx0000 <i>Meteo File *</i>
Surface Pressure	CS_OPER_AUX_SURFP_YYYYMMDDTxx0000_YYYYMMDDTxx0000 <i>Meteo File *</i>
Sea Mean Pressure	CS_OPER_AUX_SEAMPS_YYYYMMDDTxx0000_YYYYMMDDTxx0000 <i>Meteo File *</i>
Dynamic Atmospheric Correction	CS_OPER_AUX_MOG_2D_YYYYMMDDTxx0000_YYYYMMDDTxx0000 <i>Meteo File *</i>
Dynamic Sea Ice Concentration	CS_OPER_AUX_SEA_IC_YYYYMMDDT000000_YYYYMMDDT235959 <i>Updated every 3 days</i>

**Table 3-4 List of dynamic auxiliary files in use.**

\*Meteo files are provided daily for each 6 hour grid (00h, 06h, 12h and 18h). Each product requires at least two, or sometimes three, of each Meteo file from the two grids between which the product validity lies.

### 3.3.3 CHANGES OF AUXILIARY FILES DURING THE CYCLE

During the reporting period, there was no static auxiliary file updates.

## 4 PDS STATUS

### 4.1 SIRAL Instrument Unavailability

The following unavailability periods have been noted for SIRAL data during this cycle:

UTC Start	UTC Stop	Reason	Planned
11/09/2012 03:04:00	11/09/2012 04:15:01	Roll Manoeuvre	Yes
11/09/2012 04:25:01	11/09/2012 05:14:00	Roll Manoeuvre	Yes
11/09/2012 05:24:01	11/09/2012 05:54:01	Roll Manoeuvre	Yes
11/09/2012 06:04:01	11/09/2012 06:52:00	Roll Manoeuvre	Yes
12/09/2012 15:34:00	12/09/2012 15:58:00	Roll Manoeuvre	Yes
12/09/2012 16:08:00	12/09/2012 16:39:00	Roll Manoeuvre	Yes
12/09/2012 16:49:00	12/09/2012 17:37:00	Roll Manoeuvre	Yes
12/09/2012 17:47:00	12/09/2012 18:23:00	Roll Manoeuvre	Yes
20/09/2012 07:09:18	20/09/2012 01:44:51	Orbit Manoeuvre	Yes

Table 4-1 SIRAL instrument unavailability periods for the reporting cycle.

The historic list of all SIRAL data unavailability periods is available online at:  
[http://earth.eo.esa.int/missions/cryosat/unavailability\\_periods/](http://earth.eo.esa.int/missions/cryosat/unavailability_periods/).

### 4.2 SIRAL Level 0 Data Availability

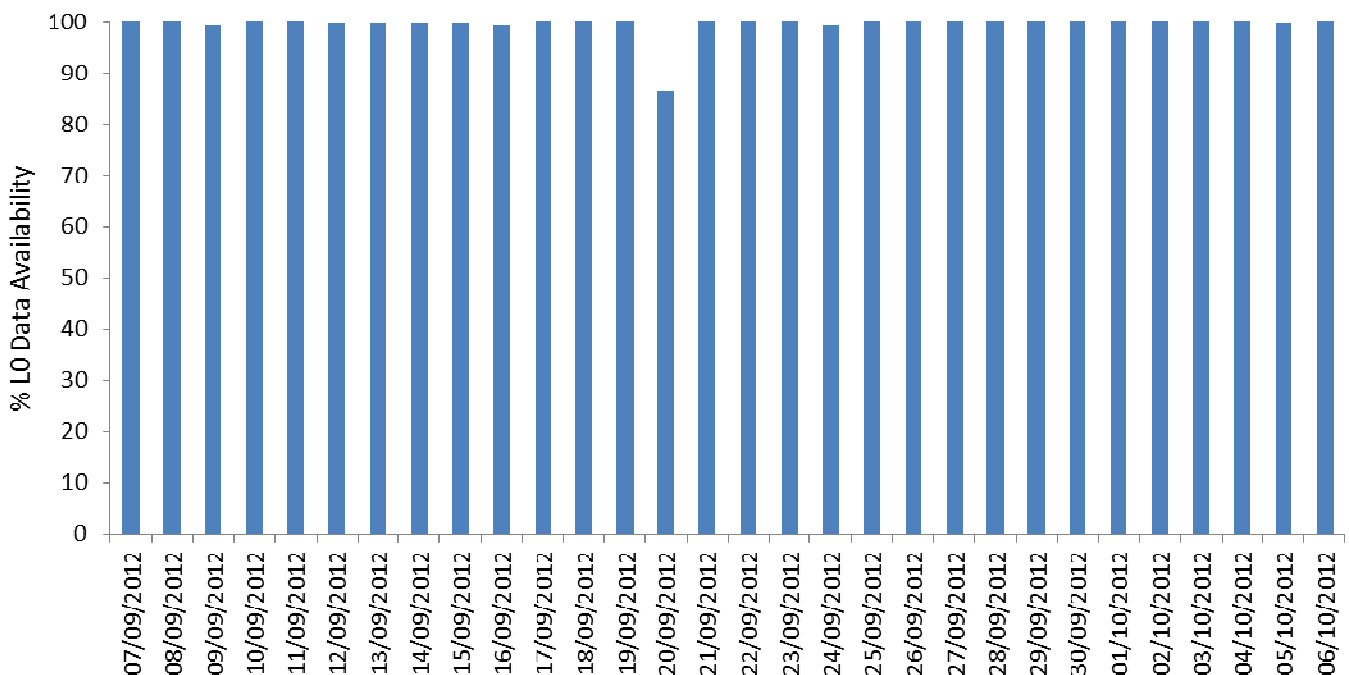


Figure 4-1 SIRAL Level 0 Data Availability for cycle 24.

SIRAL Level 0 data was available at all times throughout this cycle, except for those periods listed in Table 4-1 when the instrument was unavailable due to planned or unplanned activities.

### 4.3 SIRAL Level 1B and Level 2 Data Availability

The availability of all Level 1B and Level 2 data products for each day throughout this cycle is provided in Figure 4-2.

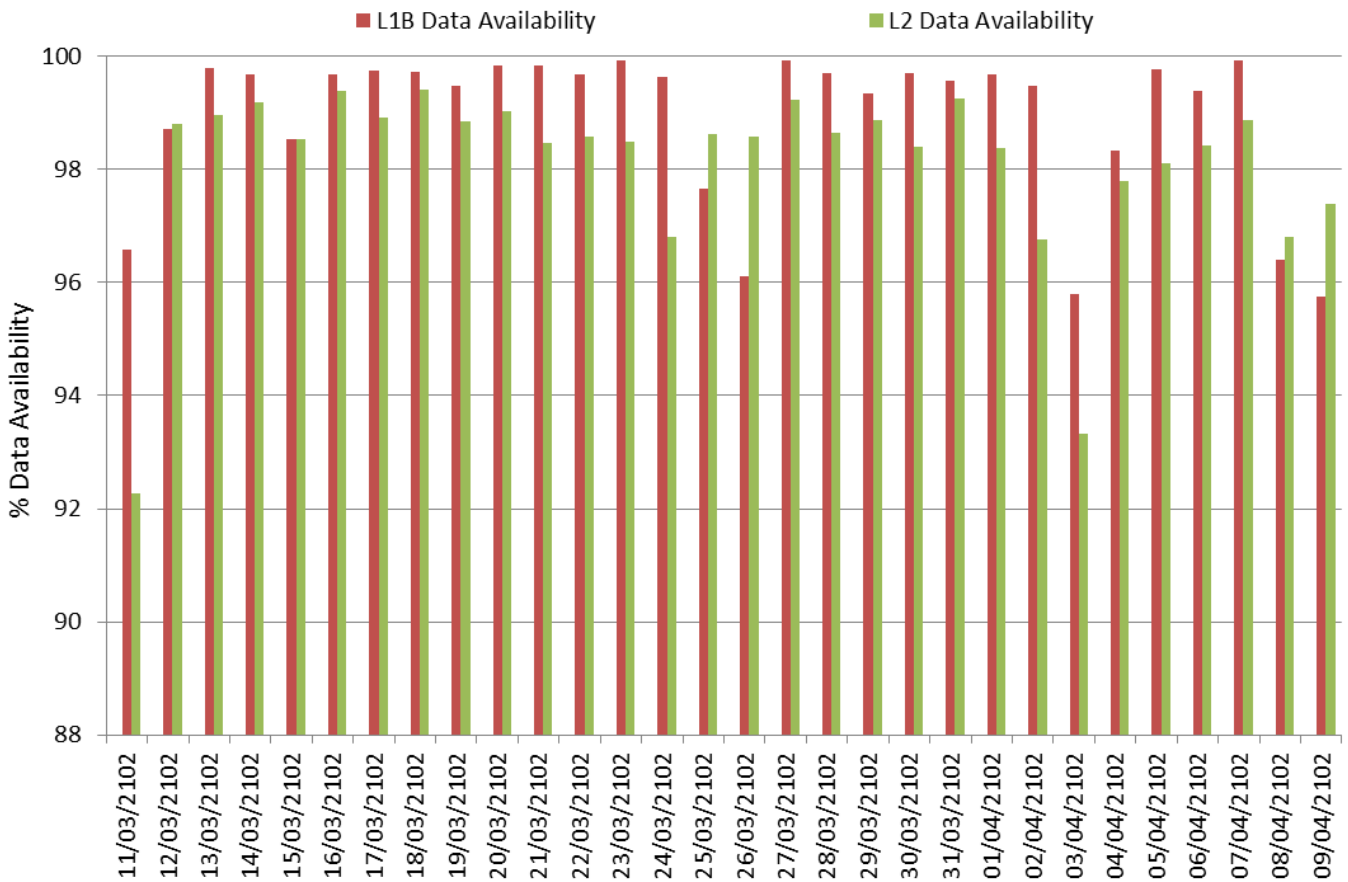


Figure 4-2 SIRAL Level 1B and Level 2 Data Availability for cycle 24.

The information in Figure 4-1 and Figure 4-2 is extracted daily from the CryoSat Monitoring Facility and forms part of the routine data quality checks which are carried out to monitor data production. The availability of each level of data is calculated with respect to the available data from the preceding processing level.

## 5 SIRAL HEALTH MONITORING

Various SIRAL parameters extracted from the Level 0 and the Monitoring Data Products are monitored on a daily basis in order to check the health and status of the SIRAL instrument.

### 5.1 Loss of Track

It is expected that SIRAL can lose track over land areas and this is a nominal feature of the instrument. However, this tracking is monitored to ensure there is no loss of track over large areas of ocean as this could indicate a potential problem with the instrument.

Figure 5-1 shows a global plot from September 2012, presenting areas of loss of track. This information is extracted from the Level 0 data products and is monitored routinely for each of the different SIRAL modes. During this reporting period, the loss of SIRAL track was nominal for all three SIRAL modes.

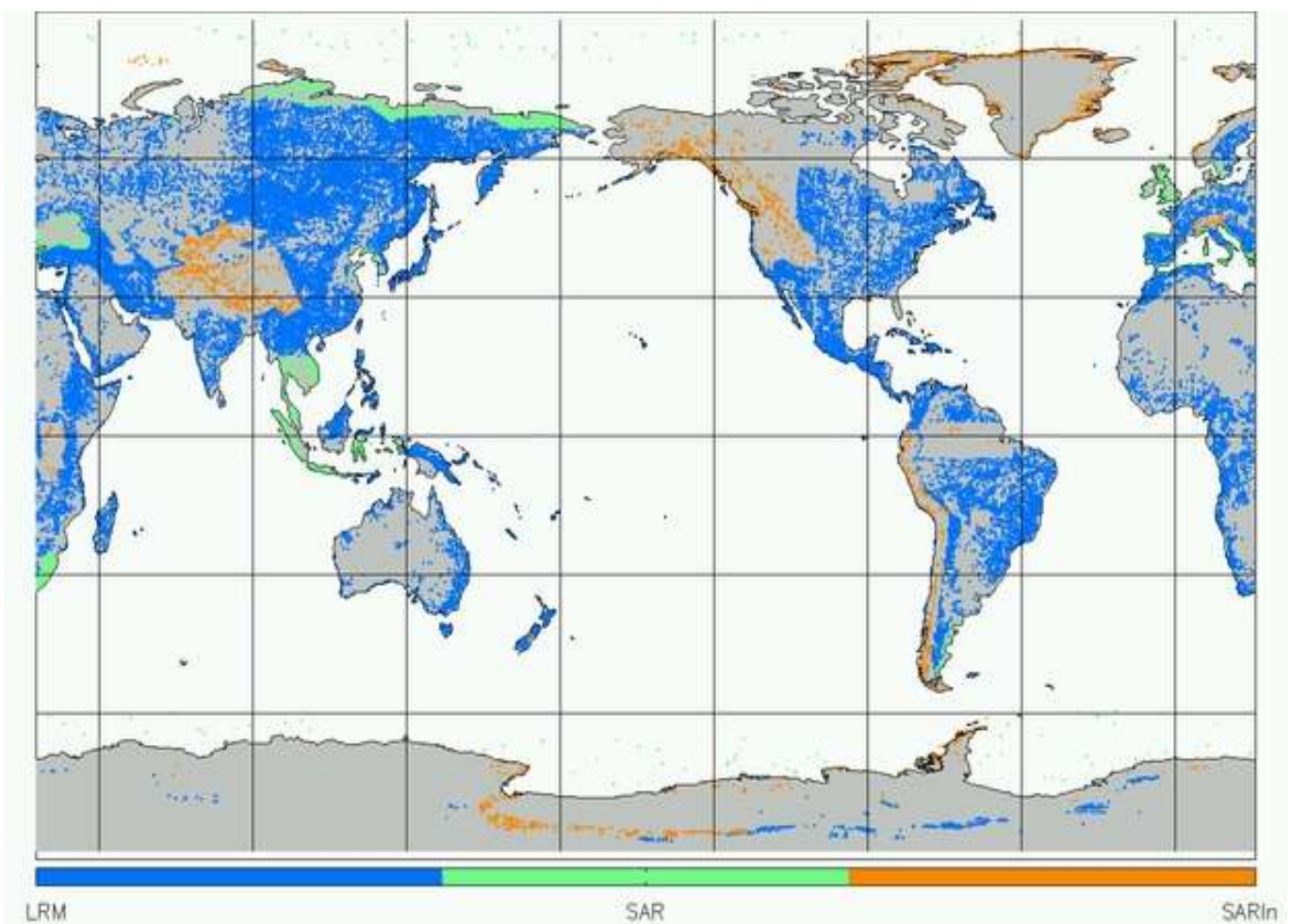


Figure 5-1 Plot showing areas of loss of track in all SIRAL modes Level 0 data during September 2012.

## 5.2 Acquisition Analysis

The location and duration of SIRAL acquisition packets are also monitored on a routine basis to check the health and status of the instrument.

The plots showing Acquisition are generated by extracting the value of the parameter H0\_Stop (altitude instruction H0 when scanning stopped) from within the SIRAL Research\_Phase\_Report provided in the L0 Acquisition products SIR1ACQ\_0\_ and SIR2ACQ\_0\_. The value extracted from the product is then converted to km.

Figure 5-2 shows the location of SIRAL acquisition packets during June 2012. As shown there are no long periods of acquisition over ocean areas indicating that the instrument acquisition was nominal during the reporting period.

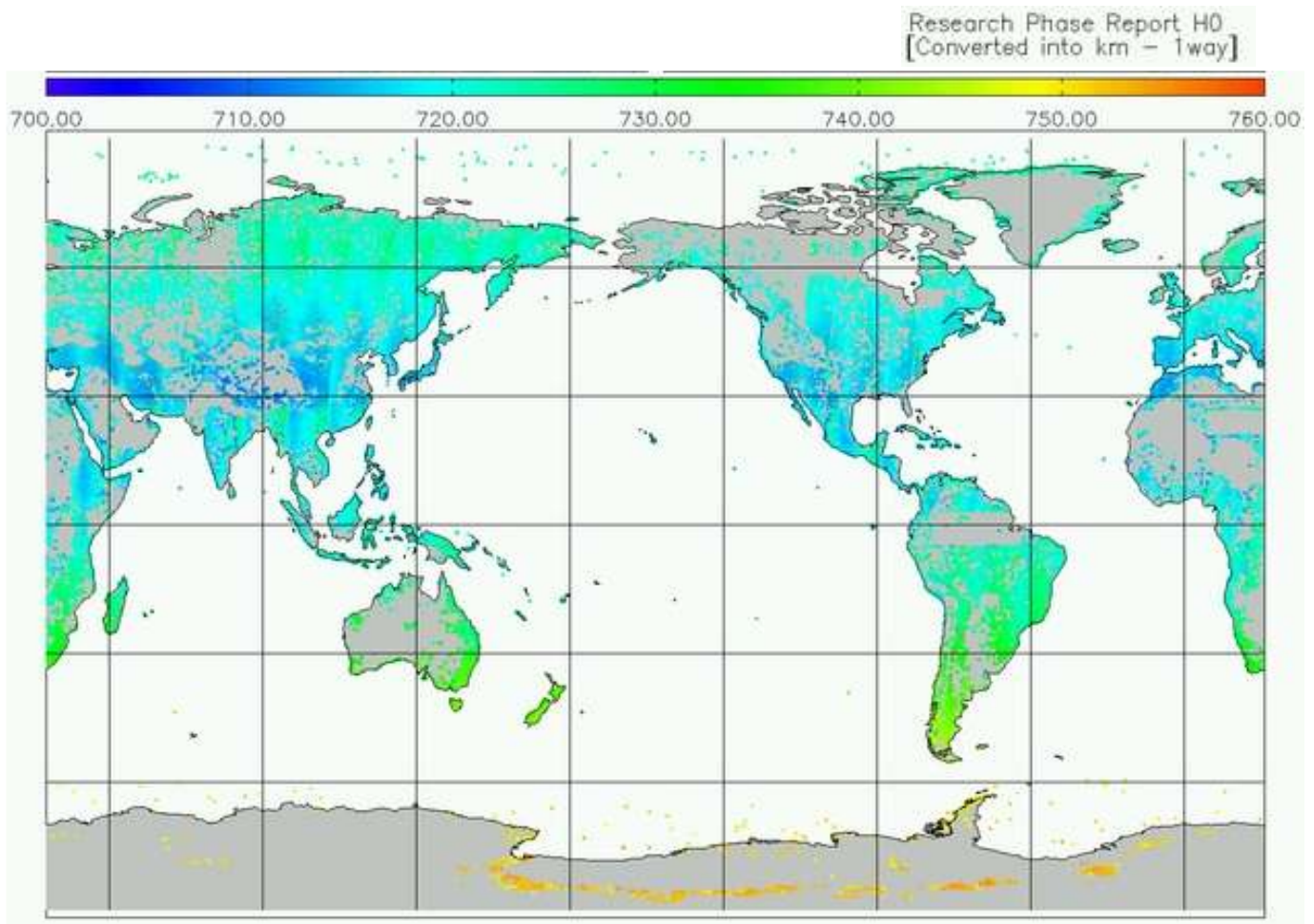


Figure 5-2 Global plot showing the location of SIRAL Acquisition packets during September 2012.



## 6 DATA QUALITY CONTROL

### 6.1 Product Format Checks

As part of the Quality Control activities, a check is conducted to ensure that all expected Level 1B and Level 2 data products have been generated with the correct format and that each CryoSat product is composed of two files; XML Header (.HDR) and Product File (.DBL)

Product Filename	Format Check Discrepancy
None	N/A

During cycle 24, there were no product format errors detected through this check.

### 6.2 Software Version Checks

As part of the Quality Control activities, a check is conducted to ensure that all CryoSat products have been generated with the correct software version, listed in Table 3-1 and Table 3-2.

Product Filename	Incorrect SW version detected
None	N/A

During cycle 24, there were no software version errors detected through this check.

### 6.3 Auxiliary Data File Usage Checks

All Level 1B and Level 2 data products are routinely checked to ensure the process has used all the relevant auxiliary data files in order to provide all the necessary geophysical corrections.

Product Filename	Missing ADF
None	N/A

During cycle 24, there were no data products flagged through this check.

## 6.4 Product Parameters

### 6.4.1 MONITORING OF SIRAL MODE CHANGES

CryoSat is designed to acquire continuously whilst switching automatically between its three nominal measurement modes, LRM, SAR and SARIn, according to a Geographical Mode Mask. Additionally, if one SIRAL receiver chain should fail then the instrument can operate in SARIn mode with one channel and this is referred to as SARIn Degraded (SID) mode. As the mode mask is updated regularly primarily to account for changes in sea-ice extent, between the different CryoSat cycles changes are expected in the SAR and LRM mode extents in areas of sea-ice.

Figure 6-1 shows the daily percentages of each SIRAL mode for cycle 24.

Further trends on both a cyclic and weekly basis are available on the MSSL Quality Monitoring website [http://cryosat.mssl.ucl.ac.uk/qa/view\\_mode\\_trend.php?dtlength=7](http://cryosat.mssl.ucl.ac.uk/qa/view_mode_trend.php?dtlength=7).

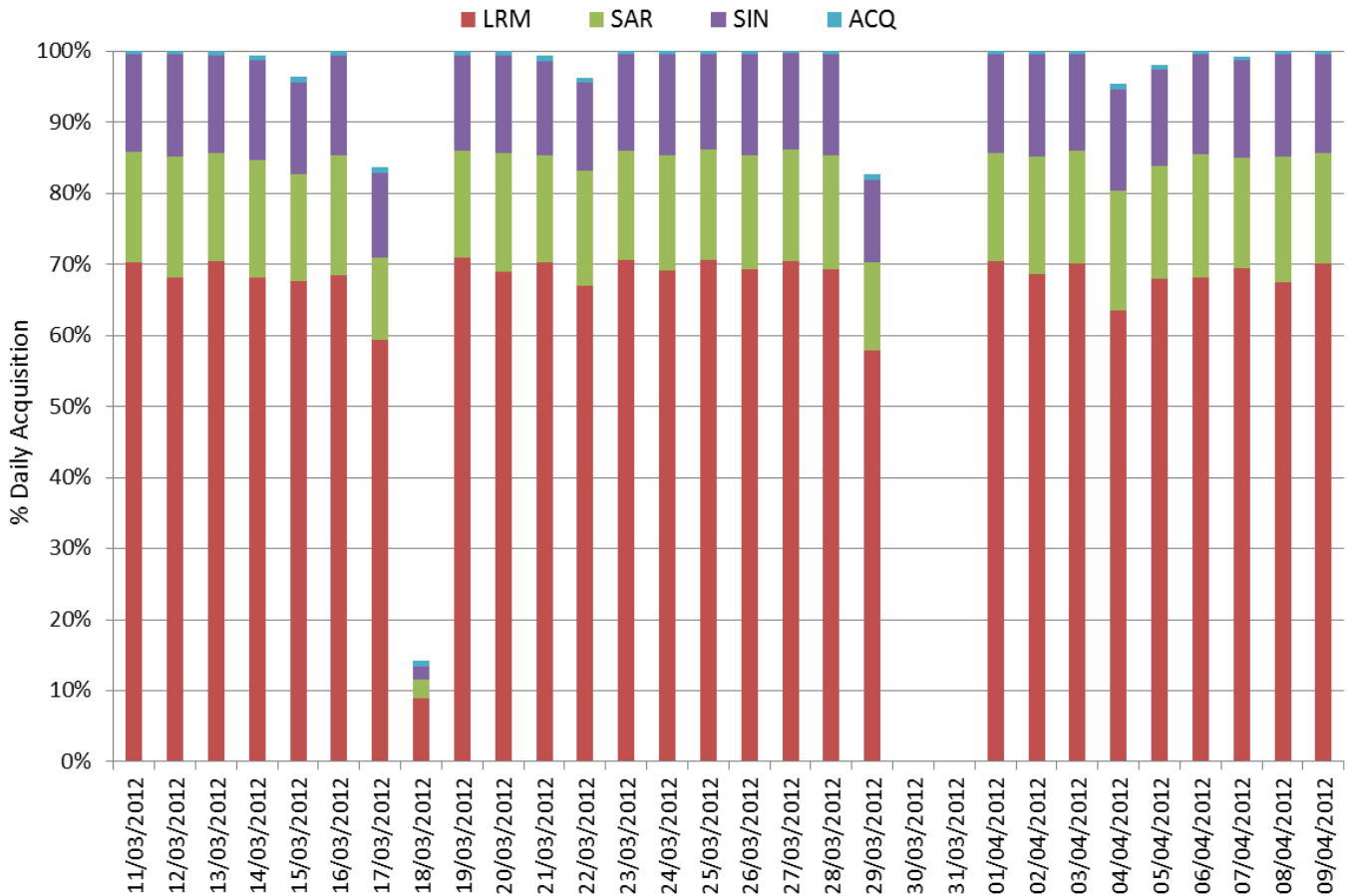


Figure 6-1 Daily percentages of SIRAL modes for cycle 24.



Figure 6-2 shows global and polar plots of the SIRAL Modes acquired during cycle 24. These plots are generated from Level 2 GDR data, which includes a SIRAL Mode indicator for each 20 Hz record.

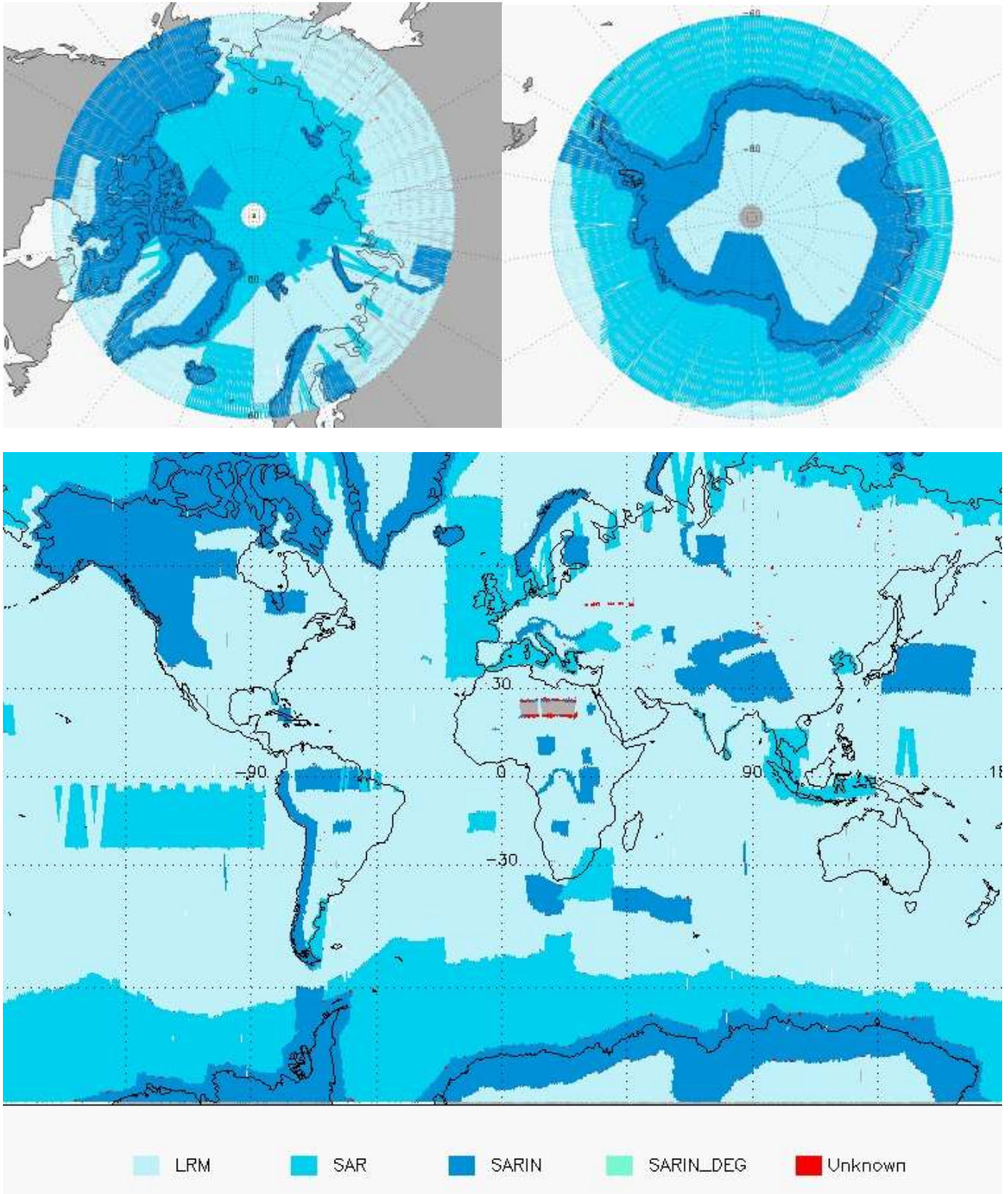


Figure 6-2 Global and Polar plots of SIRAL Modes for cycle 24.



### 6.4.2 SURFACE TYPE

Figure 6-3 shows the surface type for cycle 24 over a global plot. The data is extracted from the Level 2 data products, which includes a surface type flag. The bit values of this flag provide a classification for the different surface type at nadir for the corresponding measurement location.

The classification originates from a model provided by the ESA Geophysical CFI library.

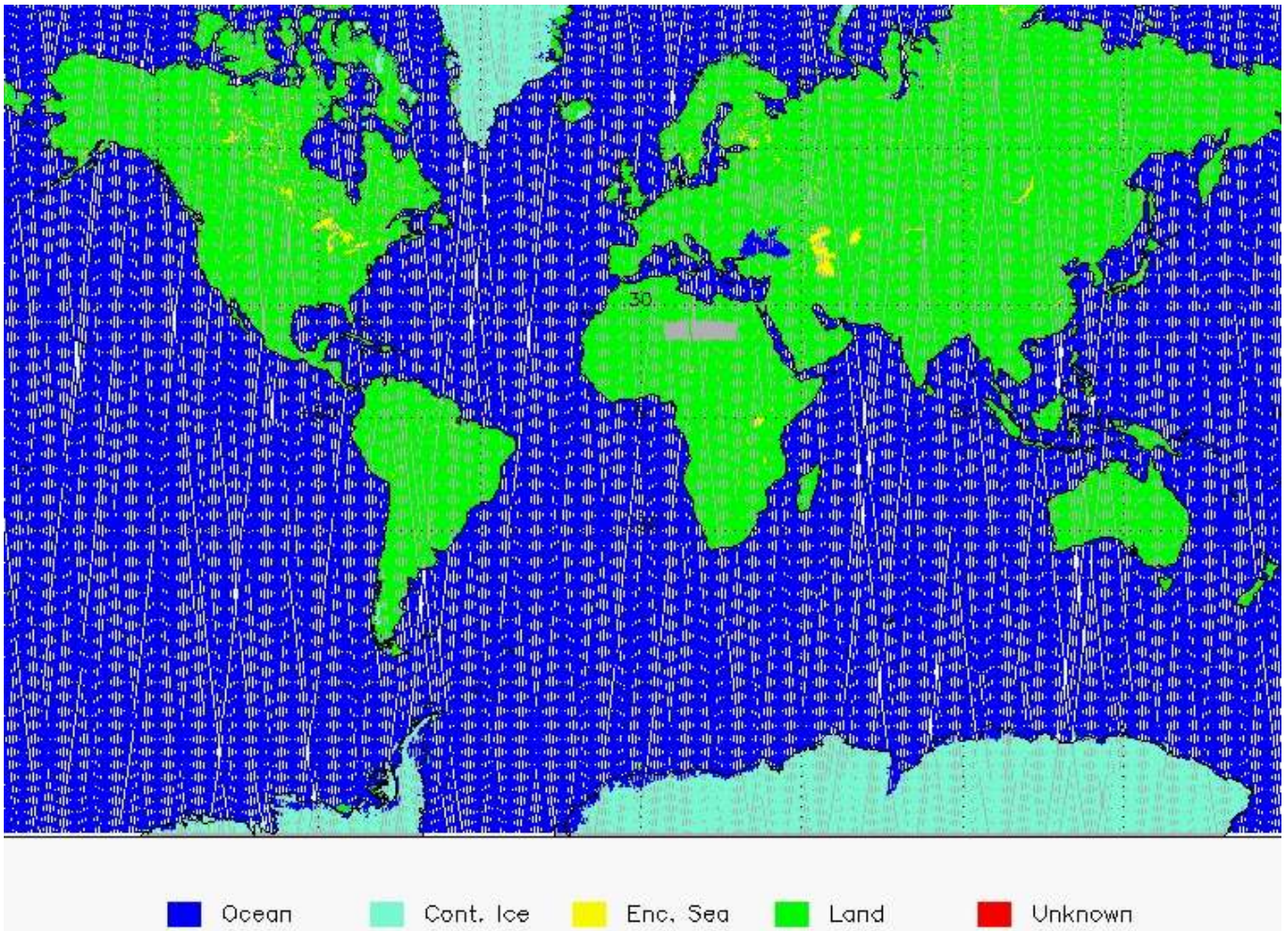


Figure 6-3 Global plot showing the surface type for cycle 24.

% Open Ocean	% Land	% Continental Ice	% Enclosed Sea	% Unknown
67.6	21.42	10.61	0.35	0.00

Table 6-1 Surface Type statistics for cycle 24.

There is currently an Anomaly Report open to investigate occurrences of the ‘Surface Type’ flag incorrectly flagging ocean. This investigation is on-going and is due to be closed with the next IPF update.



### 6.4.3 BACKSCATTER (SIGMA0)

Each 20Hz measurement record includes a radar backscatter ( $\sigma_0$ ) value which provides information about the observed surface. It is a function of the radar frequency, polarisation and incidence angle and the target surface roughness, geometric shape and dielectric properties.

Figure 6-4 shows global and polar plots of this parameter for cycle 24, for all three SIRAL modes. At Level 2, the backscatter coefficient is fully corrected, including instrument gain corrections and bias.

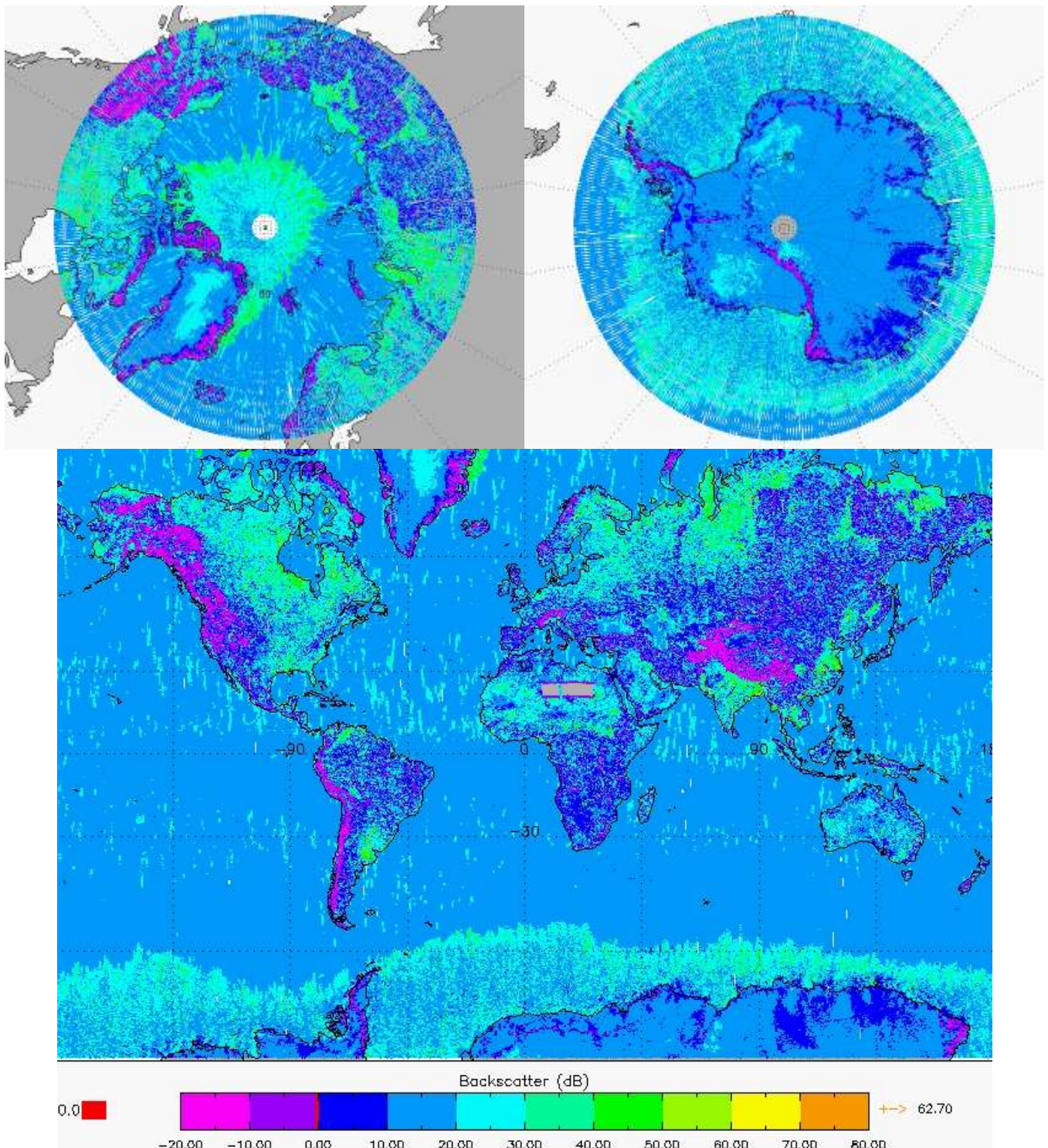
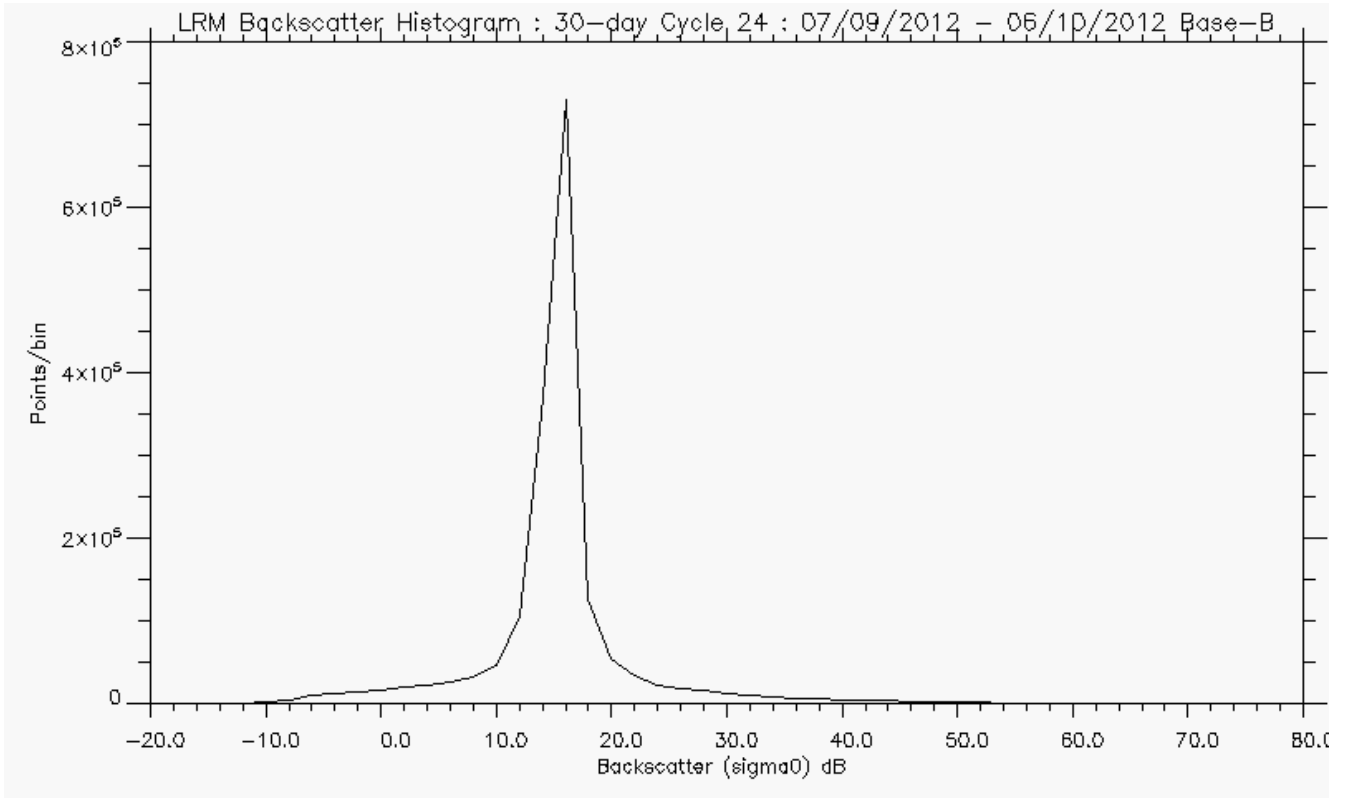
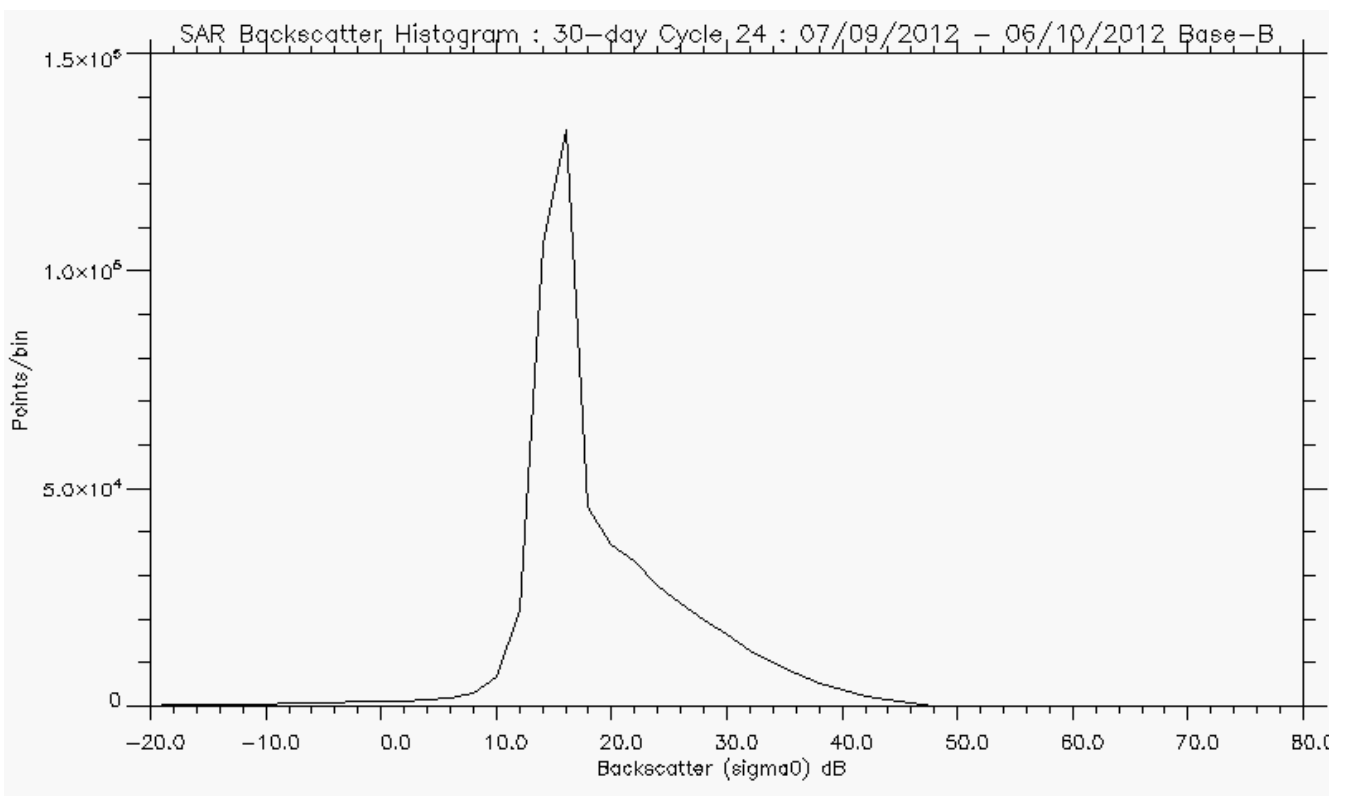


Figure 6-4 Global and Polar plots of Backscatter for cycle 24.

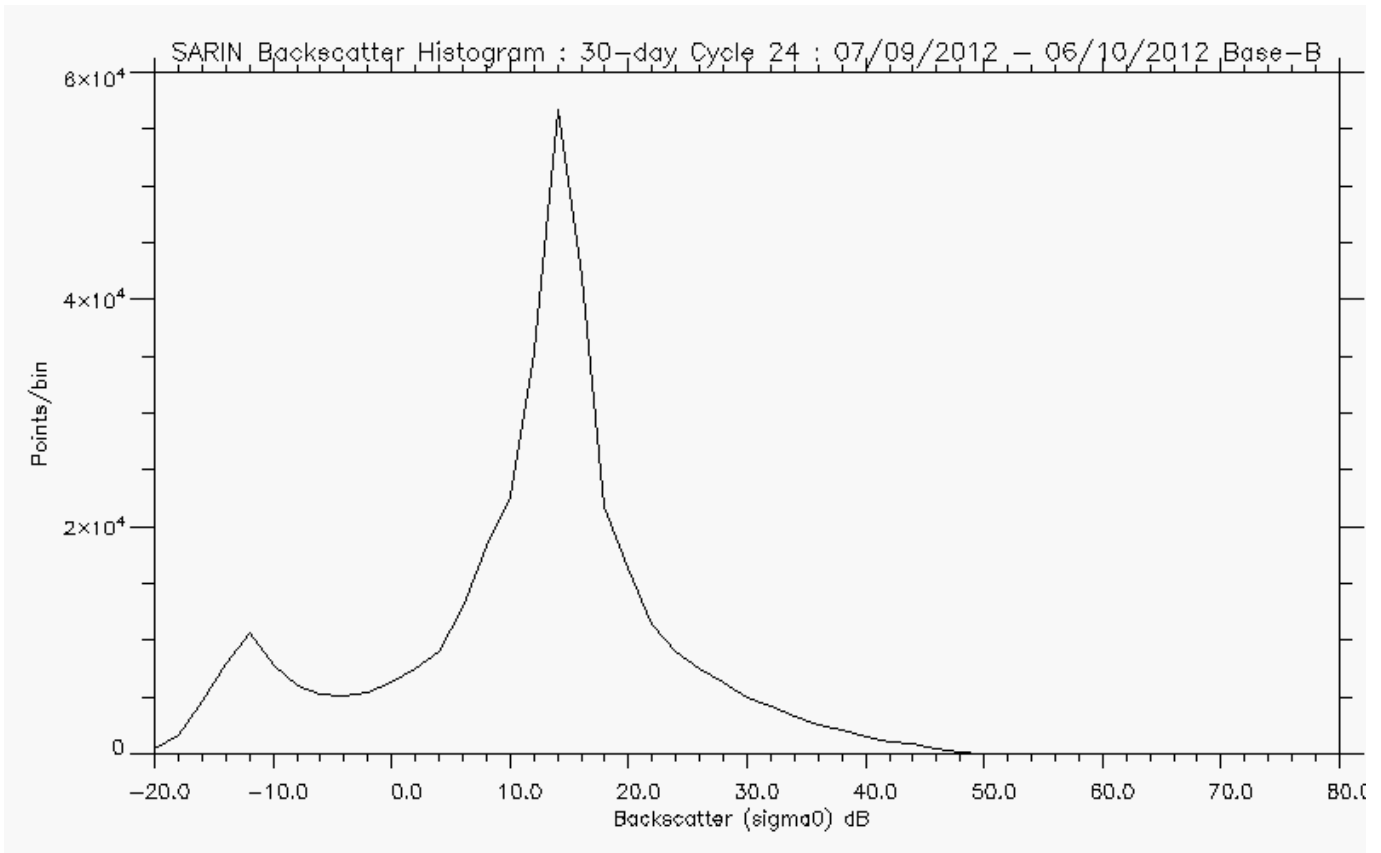
Figure 6-5, Figure 6-6 and Figure 6-7 below provide histograms for the Backscatter ( $\sigma_0$ ) parameter, for each of the SIRAL modes.



**Figure 6-5 Backscatter Histogram for LRM, cycle 24.**



**Figure 6-6 Backscatter Histogram for SAR, cycle 24.**



**Figure 6-7 Backscatter Histogram for SARIn, cycle 24.**

It has been noted that in recent months backscatter values have been declining by ~0.1 dB per month. The power level transmitted by SIRAL has also been declining by a few 100ths of a dB per month. Nominally the CAL1 mode detects this and provides a correction to the sigma-0 values, however there is currently an Anomaly Report open on this issue as this CAL1 correction is currently being applied with the wrong sign, hence the apparent drop in power. This problem is currently under investigation but CryoSat data users should be aware as this can in turn affect wind speed and sea state bias correction values.

#### 6.4.4 WAVEFORM PEAKINESS

CryoSat Level 2 data includes a Waveform Peakiness value (field 39) for each 20Hz measurement record. Peakiness is a ratio of the maximum waveform sample (bin) value to the mean value of the bins to the right of the tracking point. It is used to discriminate specular returns from diffuse returns and is used to estimate sea ice thickness.

Figure 6-8, Figure 6-9 and Figure 6-10 below provide global Peakiness histograms for each of the SIRAL modes.

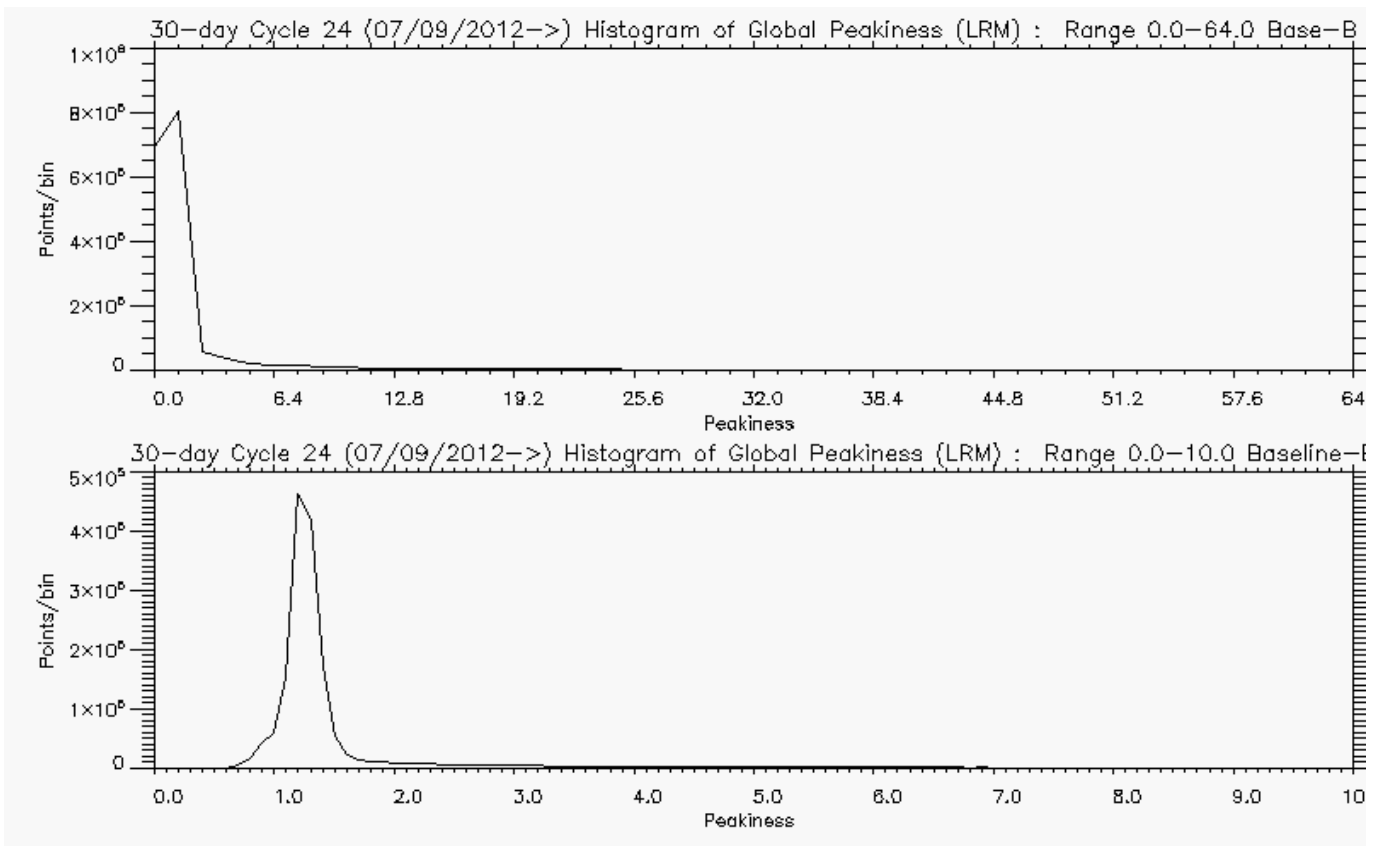
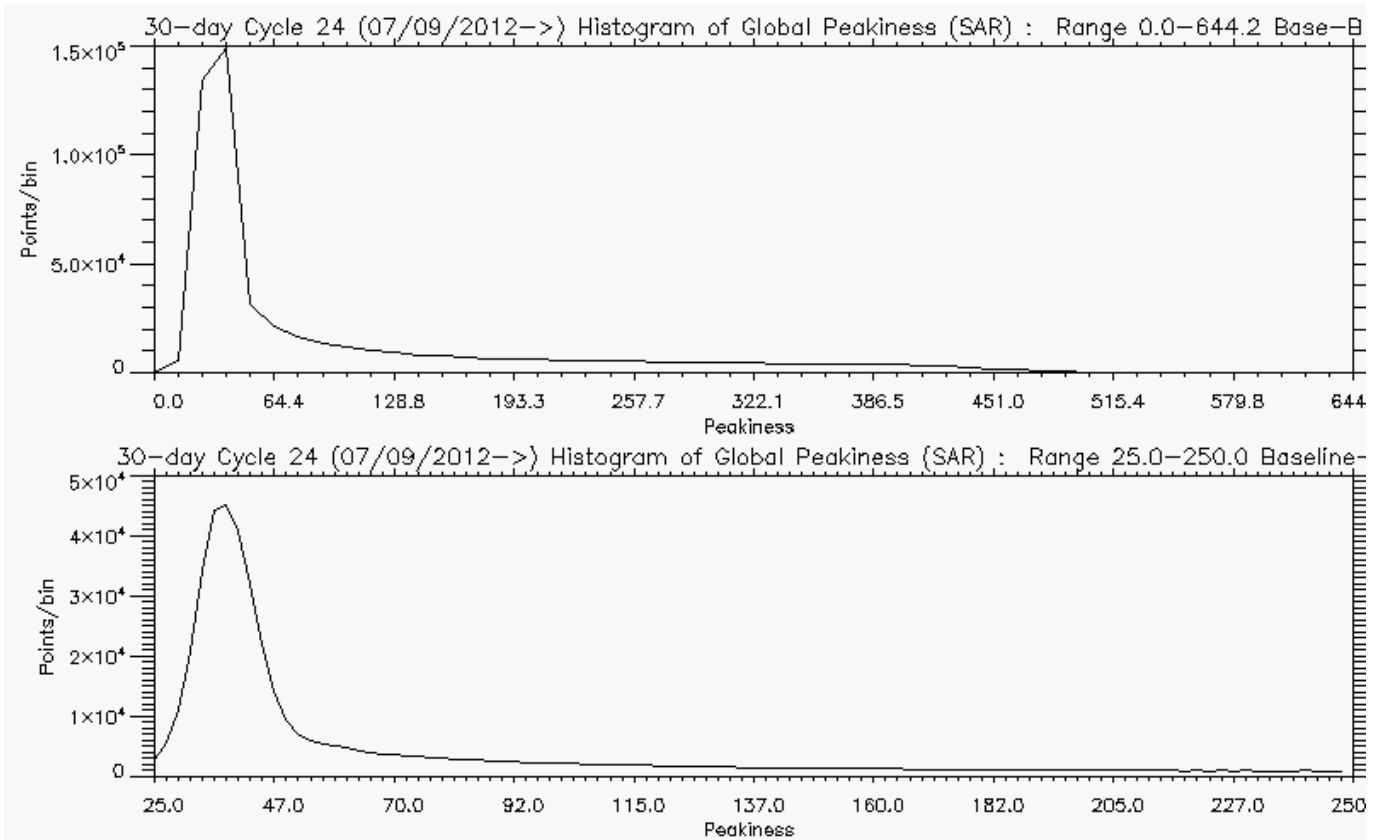
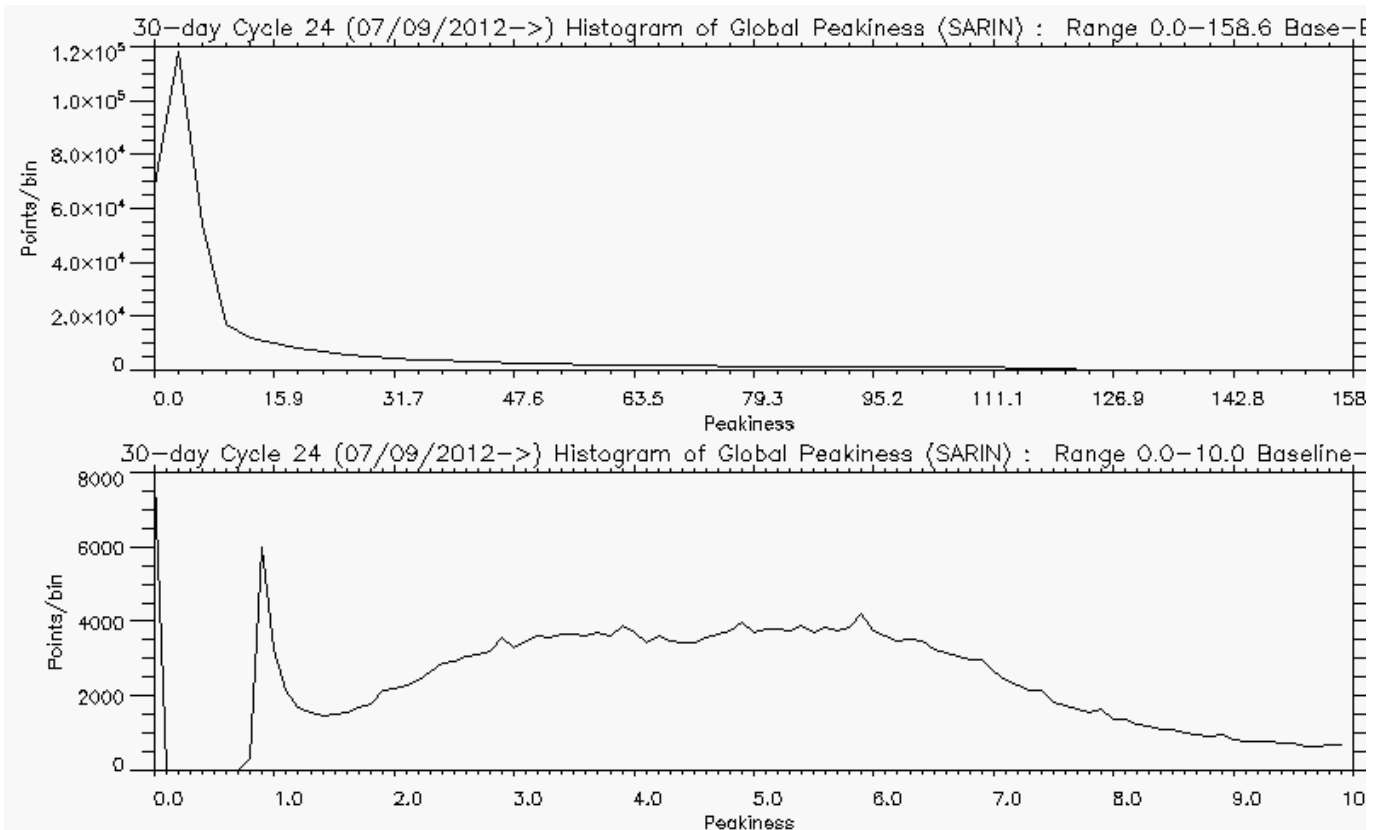


Figure 6-8 Histogram of global Peakiness for LRM, for cycle 24.



**Figure 6-9 Histogram of global Peakiness for SAR, for cycle 24.**



**Figure 6-10 Histogram of global Peakiness for SARIn, for cycle 24.**



Figure 6-11 shows the Waveform Peakiness for cycle 24, plotted over global and polar plots.

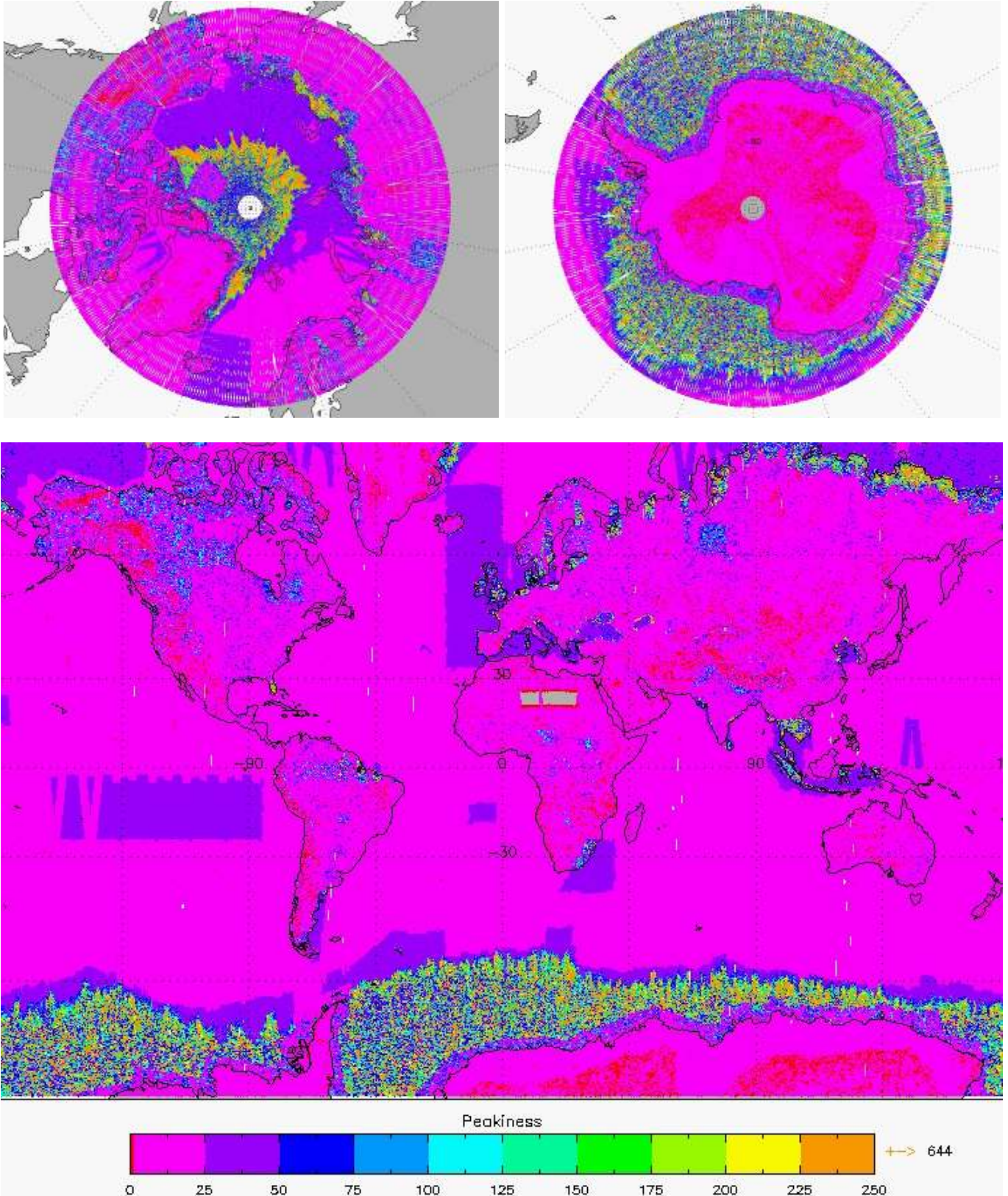


Figure 6-11 Global and polar plots showing Waveform Peakiness for cycle 24.



### 6.4.5 FREEBOARD

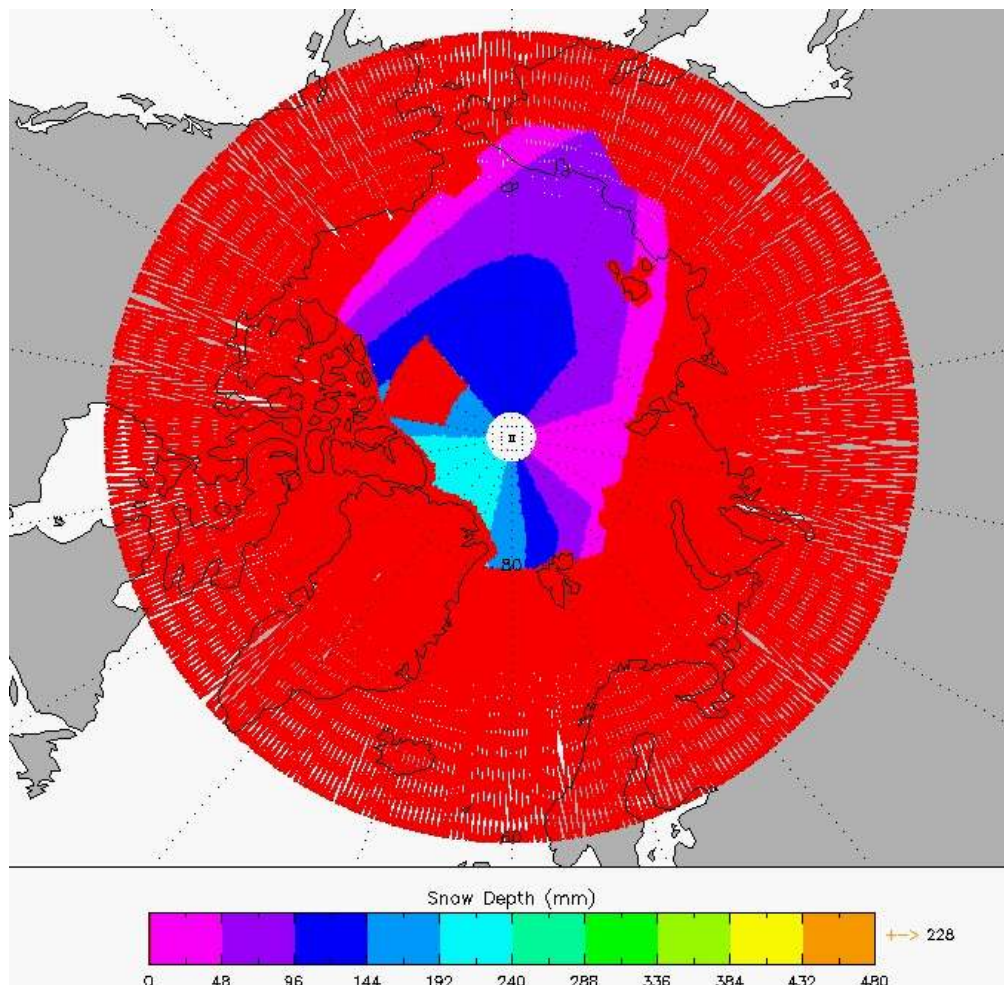
CryoSat Level 2 data also includes a calculation for the Sea Ice Freeboard, which is the height by which an ice floe extends above the mean sea surface. This value can possibly be negative if there is heavy snow load on thin ice. At Level 2 it is calculated using UCL04 model values for snow depth and density.

Presently, the freeboard values are not computed and a default value of -9999 is provided in the products by specification. The freeboard will be computed in the Level 2 products when there is a greater confidence in the knowledge of the Arctic Mean Sea Surface with the launch of the SIR\_SAR\_2B and SIR\_GDR\_2B products.

### 6.4.6 SNOW DEPTH

CryoSat Level 2 data includes a snow depth field (field 24) for each 1Hz record. The snow depth values (in mm) are extracted from a climatology model, UCL04, and can be used to adjust the freeboard estimate to account for snow-loading. Currently Level 2 products only include snow depth values for the Arctic Region as a climate model for the Antarctic Region is not available.

Figure 6-12 shows a plot of the Snow Depth values, for the Arctic region, extracted from Level 2 products from cycle 24.

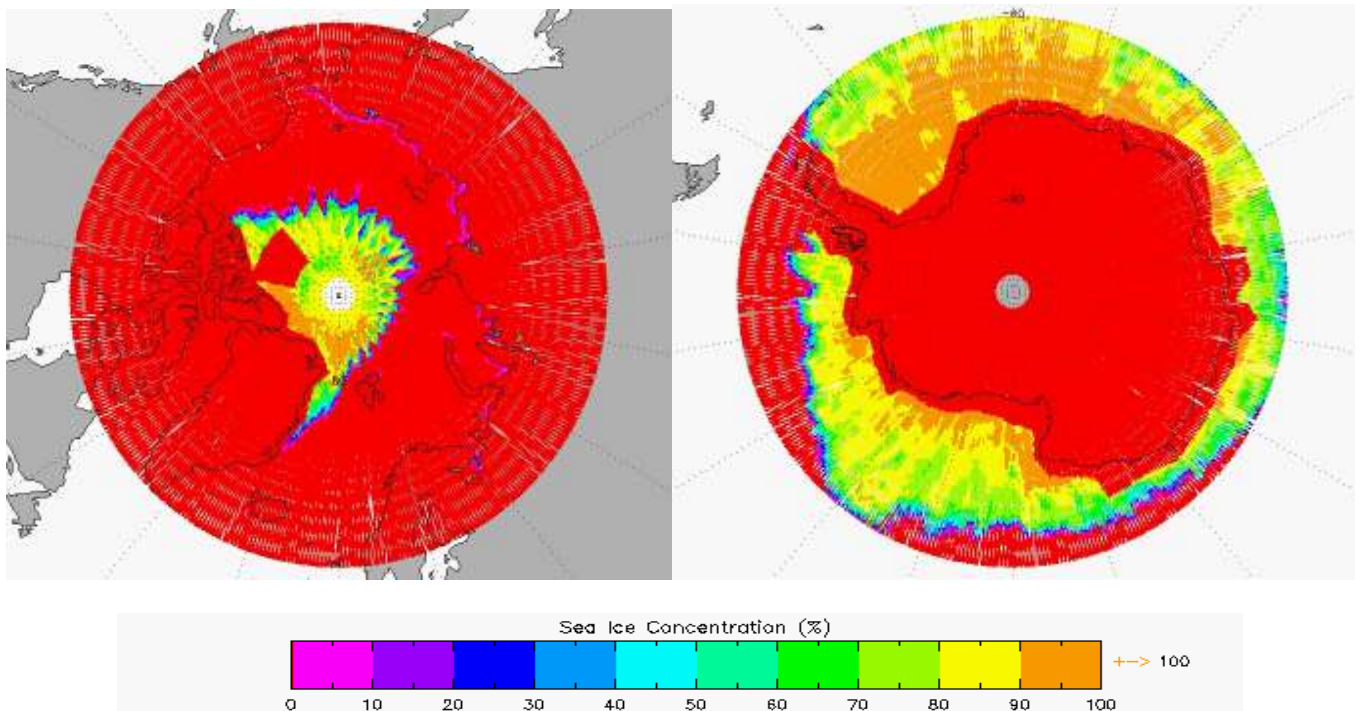


**Figure 6-12 Snow Depth (mm) for cycle 24.**

### 6.4.7 SEA ICE CONCENTRATION

CryoSat Level 2 data includes a percentage value for the sea ice concentration field (field 23) for each 1Hz record.

Figure 6-13 shows the Sea Ice Concentration values extracted from the Level 2 products from cycle 24.



**Figure 6-13 Sea Ice Concentration (%) for cycle 24.**

### 6.4.8 SNOW DENSITY

CryoSat Level 2 data also includes a snow density field (field 25) for each 1Hz record. The snow density value is a constant value which is extracted by the processor from a Parameter Configuration File (PCONF) and this value can be used to adjust the freeboard estimate to account for snow-loading.

The current snow density value used in the CryoSat Level 2 products is  $400 \text{ kg/m}^3$ .

### 6.4.9 SURFACE HEIGHT

CryoSat Level 2 data provides the calculated Surface Height (Level 2 field 34) w.r.t. the ellipsoid WGS84 for each 20Hz measurement record. Figure 6-14 shows polar plots of the Surface Height values extracted from the Level 2 products, over land and ocean areas, for cycle 24.



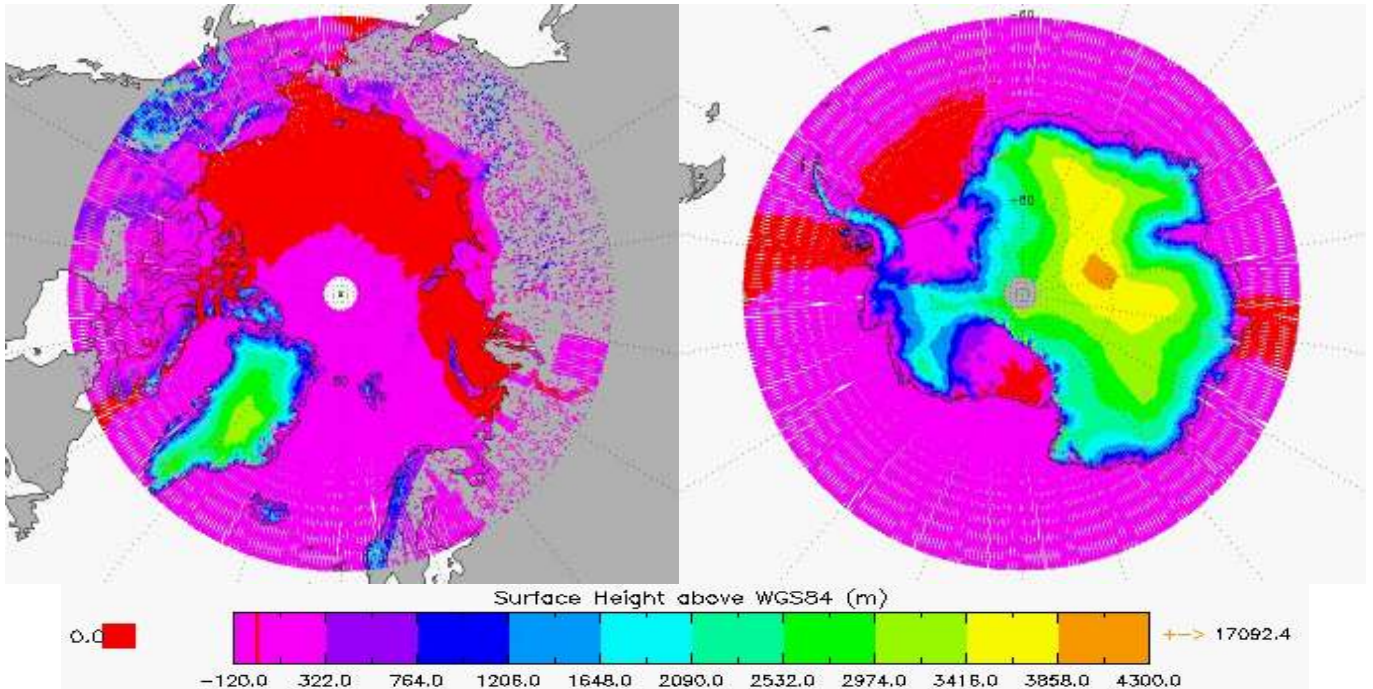


Figure 6-14 Polar plots showing the Surface Height over land and ocean areas for cycle 24.

Figure 6-15 shows a global plot of the Sea Surface Height values extracted from the Level 2 products over ocean areas for cycle 24.

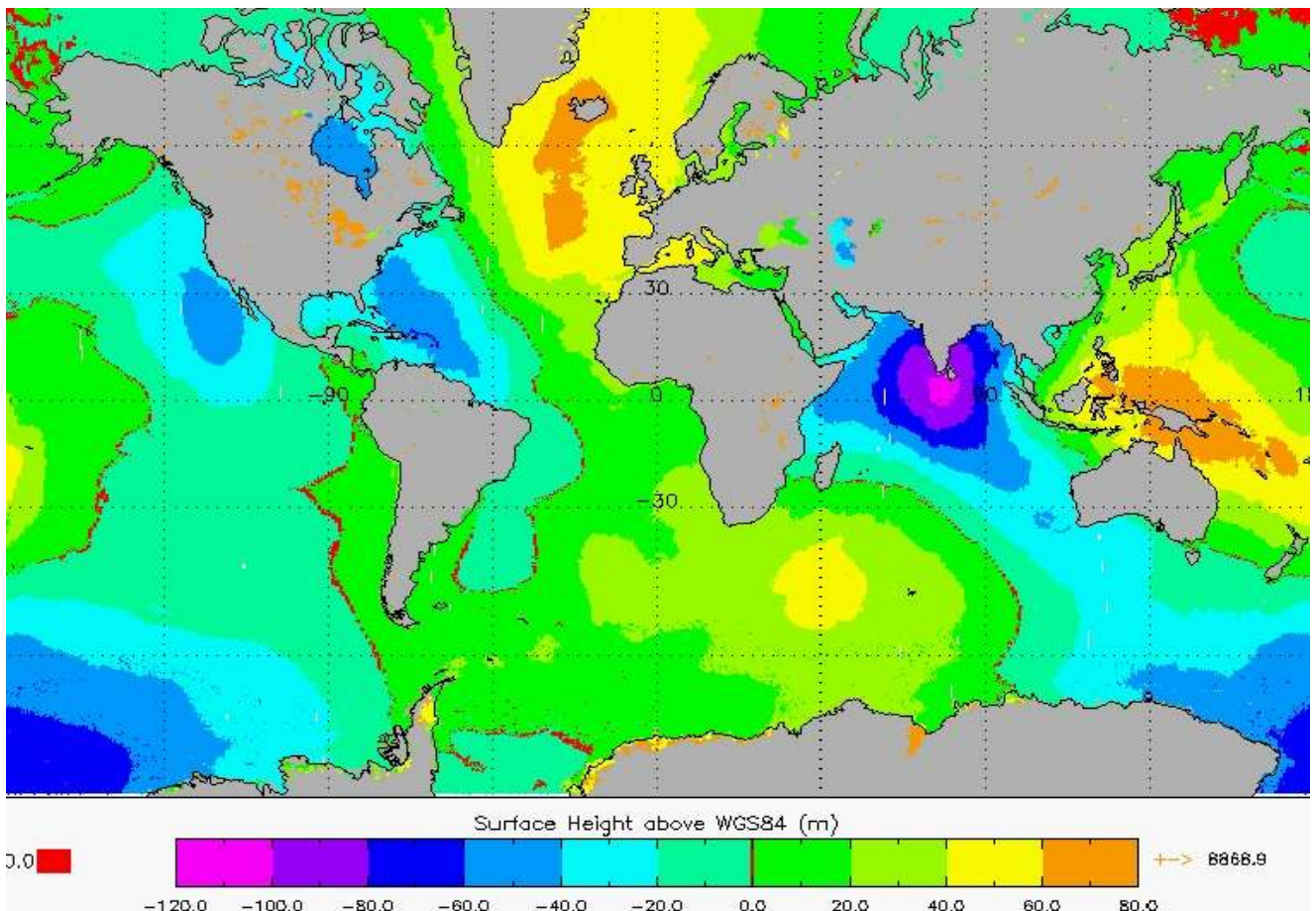


Figure 6-15 Global plot showing the Sea Surface Height over ocean areas only, for cycle 24.

## 6.5 Quality Flags

The CryoSat Level 2 data products include a quality flag word (field 43) for each 20Hz measurement record. The bit values of this flag indicate an assessment of the measurement quality by the PDS processing chains.

Table 6-2 provides the statistics for each Quality Flag, from Field 43, for each mode during cycle 24. The results are provided for each mode and surface type. For SARIn mode the Quality Flag results are provided for Ice and Land. Although SARIn mode is predominantly used over steeply sloping ice-sheet margins, small ice caps and areas of mountain glaciers, there are also additional areas where this mode is also operated over land areas such as over Africa and along the Chilean coast.

Quality Flag	LRM – Ice	LRM – Land	LRM – Ocean	SARIn – Ice	SARIn – Land	SAR - Ocean
BLOCK DEGRADED	0%	0%	0%	0%	0%	0%
ORBIT ERROR	0%	0%	0%	0%	0%	0%
ORBIT DISCONTINUITY	0%	0%	0%	0%	0%	0%
HEIGHT ERROR	18.88%	82.43%	0.44%	9.36%	23.72%	0.01%
SSHA INTERP ERROR	0%	0%	0%	0%	0%	0%
CALIBRATION WARNING	0%	0%	0%	0%	0%	0%
BACKSCATTER ERROR	17.33%	80.42%	0.43%	0%	0%	0.01%
PEAKINESS ERROR	0%	0%	0%	0%	0%	0%
FREEBOARD ERROR	100%	100%	100%	100%	100%	100%
SAR DISCRIM = OCEAN	0%	0%	0%	0%	0%	24.2%
SAR DISCRIM = LEAD	0%	0%	0%	0%	0%	9.53%
SAR DISCRIM = ICE	0%	0%	0%	0%	0%	20.3%
SAR DISCRIM=UNKNOWN	0%	0%	0%	0%	0%	45.96%
SARIN XTRACK ERROR	0%	0%	0%	70.06%	98.87%	0%
SARIN RX1 ERROR	0%	0%	0%	0%	0%	0%
SARIN RX2 ERROR	0%	0%	0%	0%	0%	0%
SIRAL IDENTIFIER	0%	0%	0%	0%	0%	0%
SURFACE MODEL UNAVAILABLE	0%	0%	0%	0%	0%	0%
MISPOINTING _ERROR	0%	0%	0%	0%	0%	0%
DELTA _TIME _ERROR	0%	0%	0%	0%	0%	0%

Table 6-2 Quality Flag Results for cycle 24.

Currently the Quality Flag for ‘Freeboard Error’ is set in all products as this parameter is currently not provided in the Level 2 products and the value is presently set to the default value of -9999 (please refer to section 6.4.5 for more details).

It has been noted that the number of errors arising from the ‘Backscatter Error’ and ‘Height Error’ Quality Flag is much higher than expected over land-ice areas and this is currently part of an on-going investigation by expert teams.

The SARIn Xtrack Error flag is used to indicate records flagged as ambiguous. In Level 2I SARIn products, an Ambiguity Flag (field 73) is used to indicate ambiguity and is also used to indicate why the record has been flagged as ambiguous. Within the corresponding Level 2 SARIn products, there is only one bit available within the record structure to show this, so it is currently set if the difference between the computed surface elevation and the DEM is > 50m or if there isn't a DEM at the current location to check.

As the DEM is only available for Greenland and Antarctica, the SARIn Xtrack flag can be ignored in all other regions. Currently there is an on-going investigation into the high number of errors from the ‘SARIn X-track Error’ Quality Flag over Antarctica.

## 6.6 Crossover Analysis

This section provides results from crossover processing of Level 2 data from cycle 24.

### 6.6.1 CROSSOVER STATISTICS

The crossover statistics for cycle 24, from each mode, is provided in Table 6-3 for Antarctica, Greenland and the Global Oceans.

Location	Mode	No of xovers	RMS	Mean	XTT Mean
Antarctica	LRM	36067 (91.2%) < 10.0m	<b>0.42 m</b>	-0.02 m	4.85 ms
	SARIn	9851 (85.6%) < 10.0m	<b>1.97 m</b>	0.03 m	-0.89 ms
Greenland	LRM	314 (94.9%) < 1.0m	<b>0.36 m</b>	0.19 m	4.52 ms
	SARIn	1605 (77.8 %) < 1.0m	<b>1.95 m</b>	-0.04 m	-0.51 ms
Global Oceans	LRM	9058 (99.5%) < 1.0m	<b>0.24 m</b>	-0.14 m	4.46 ms

Table 6-3 Cycle 24 Crossover Statistics.



### 6.6.2 ELEVATION MAPS

Figure 6-16 and Figure 6-17 show spatial polar maps of elevation differences at crossover per 10km<sup>2</sup> grid cells for Level 2 products from cycle 24.

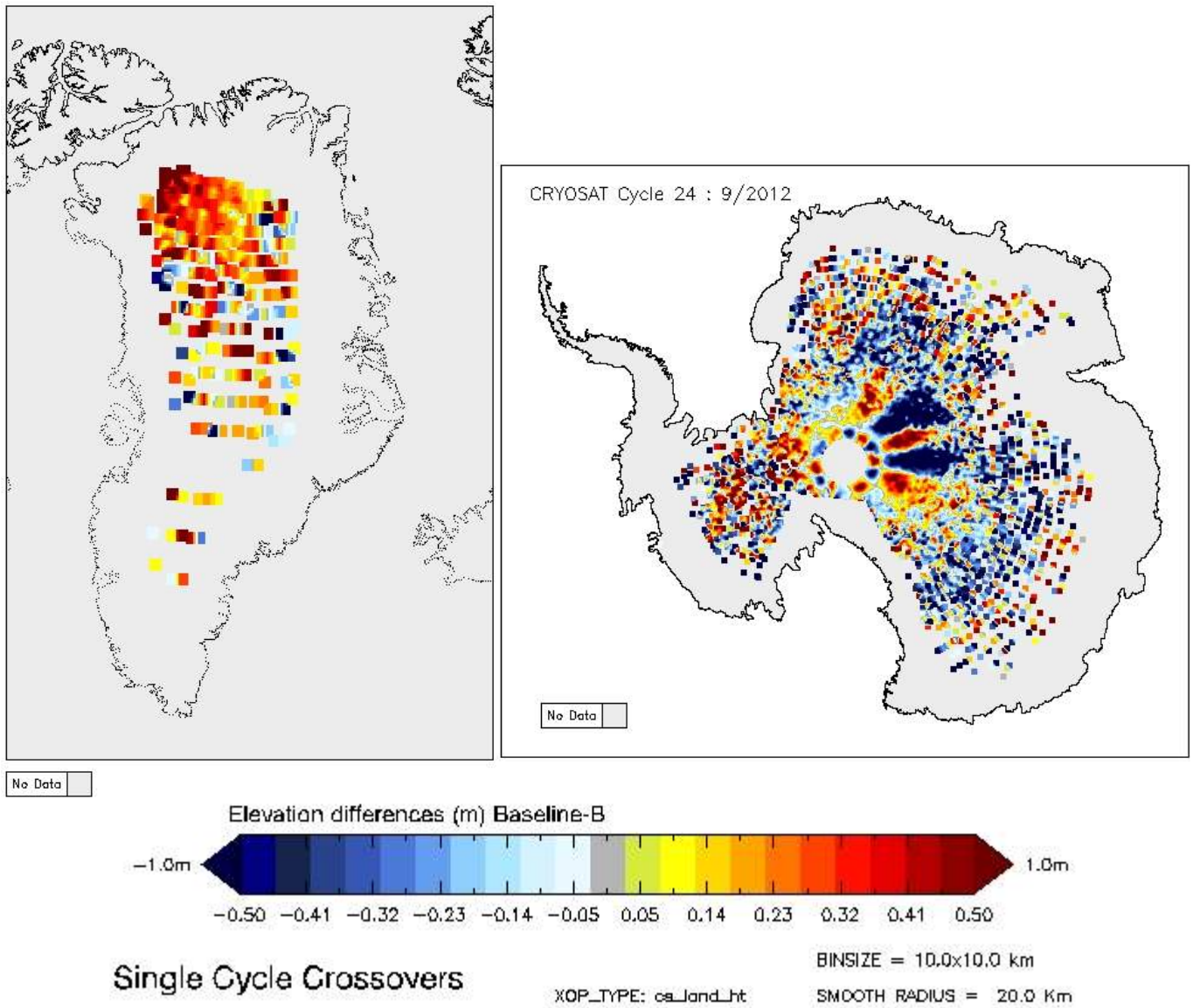


Figure 6-16 Polar maps of LRM elevation difference for cycle 24.

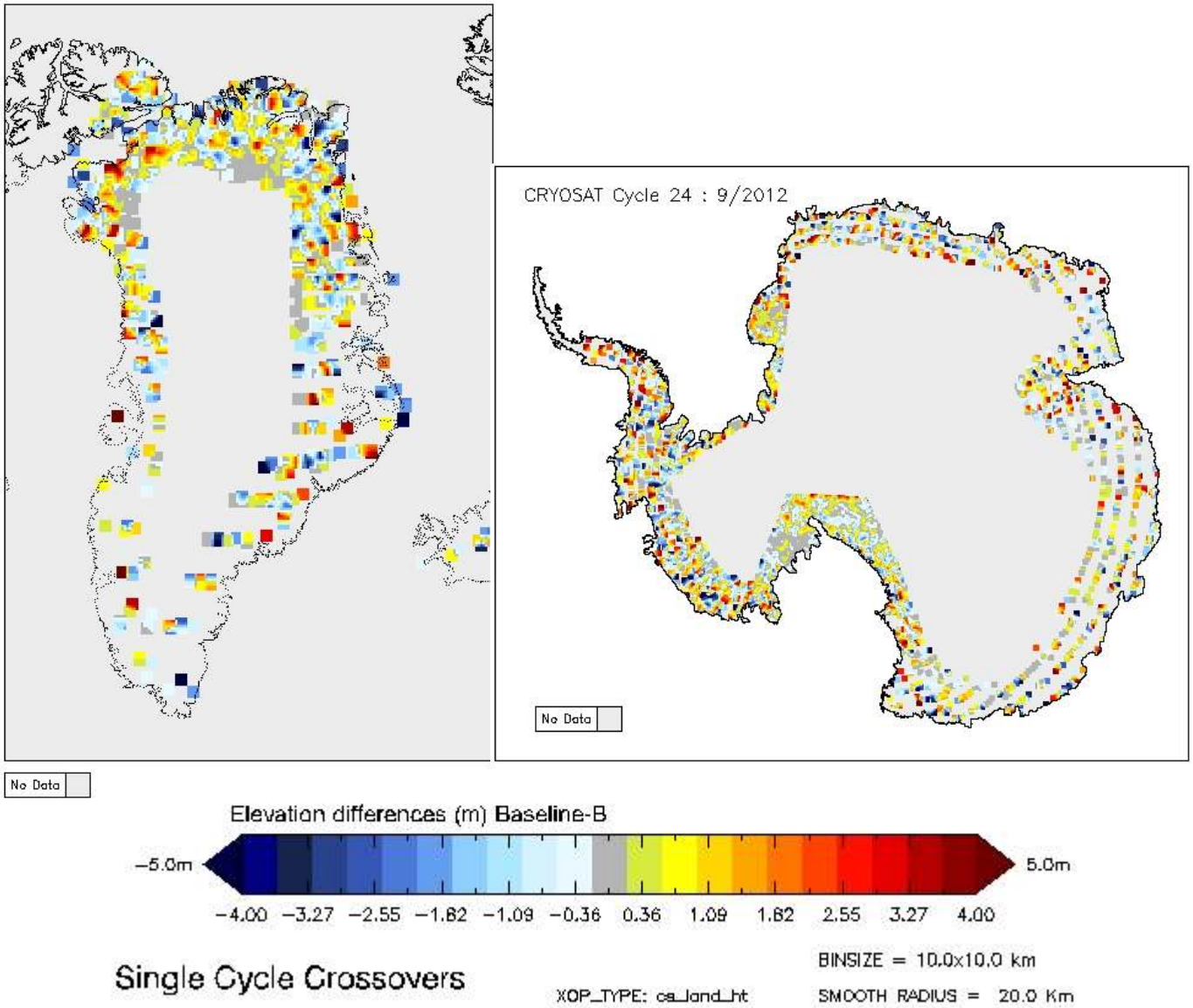


Figure 6-17 Polar maps of SARIn elevation difference for cycle 24.

### 6.6.3 BACKSCATTER (SIGMA0) MAPS

Figure 6-18 and Figure 6-19 provide spatial polar maps of power differences at crossover per 10km<sup>2</sup> grid cells for Level 2 products from cycle 24.

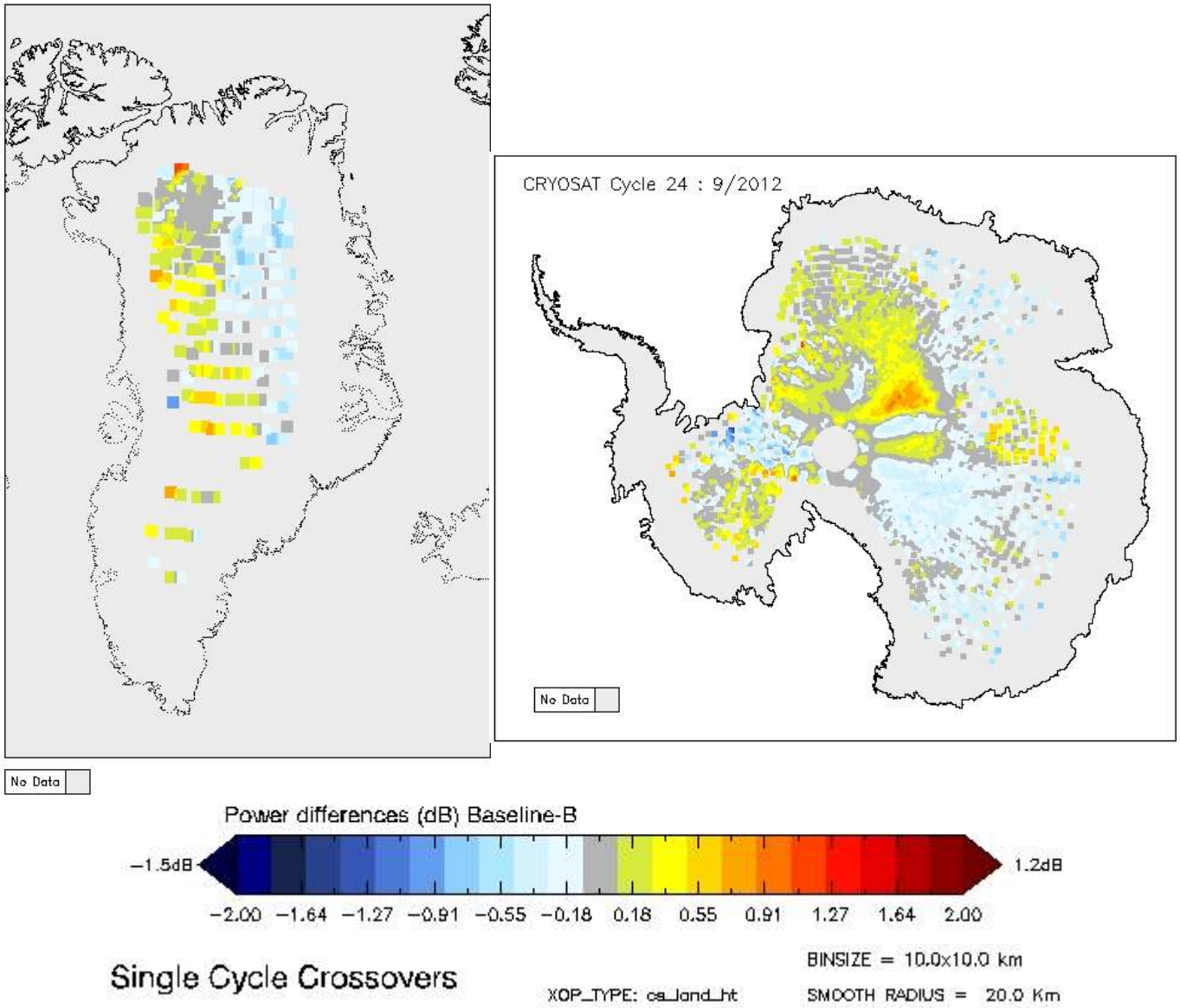


Figure 6-18 Polar maps of LRM power differences for cycle 24.



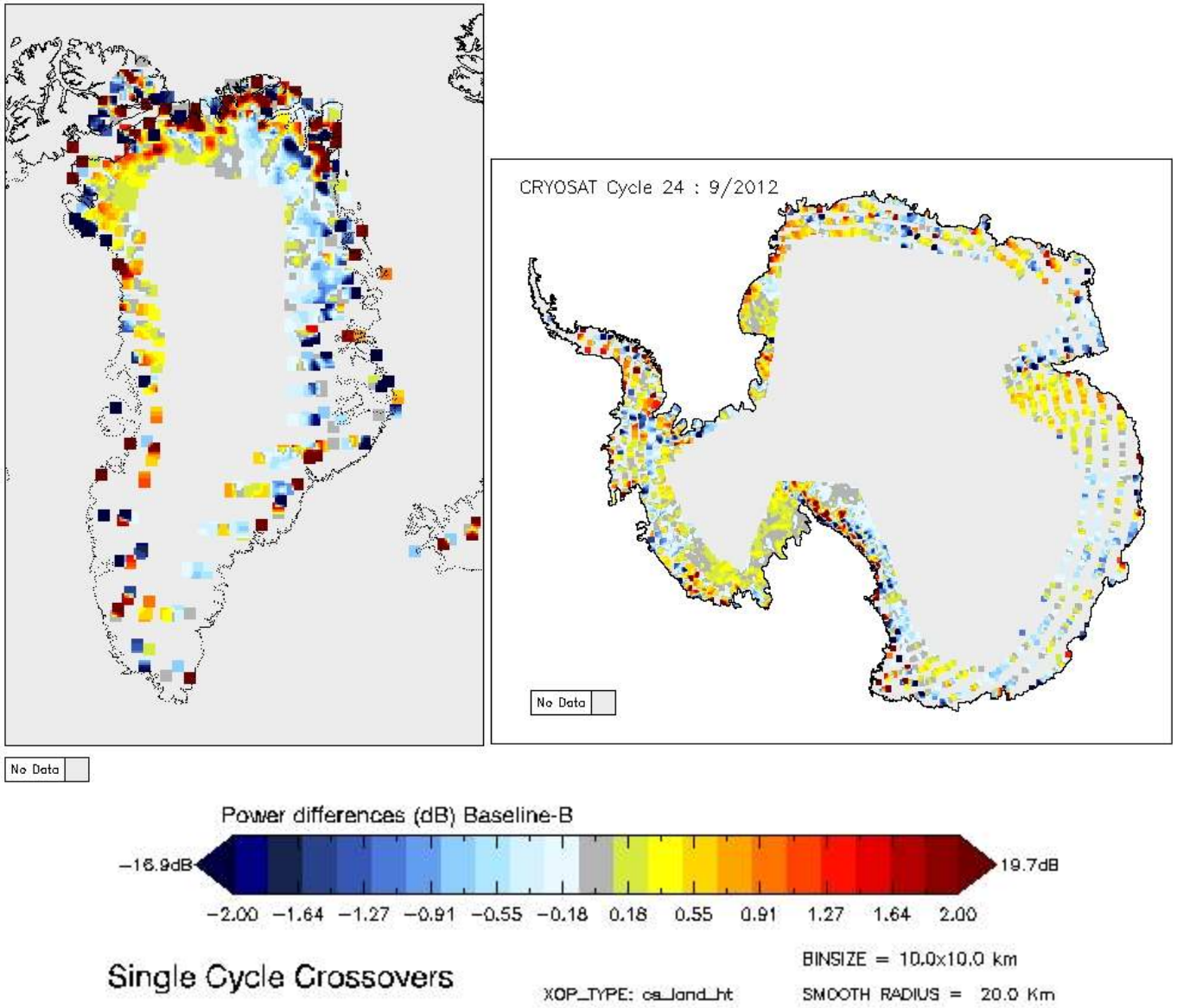


Figure 6-19 Polar maps of SARIn power differences for cycle 24.

## 6.7 External Auxiliary Corrections

Surface Height measurements, which are provided in the SIRAL Level 2 products are corrected for atmospheric propagation delays and geophysical surface variations. This section provides global maps of the value of each correction for cycle 24. Furthermore, the global trend taken from each 30-day cycle is also provided.

### 6.7.1 DRY TROPOSPHERIC CORRECTION

This correction for the dry gas component of the atmosphere refraction takes into account the path delay in the radar return signal due to the atmosphere. It has a typical range from 1.7 to 2.5m.

For CryoSat processing the Dry Tropospheric Correction is not provided via a specific auxiliary data file but is computed by the processors using ECMWF surface pressure files.

Figure 6-20 shows, geographically, the value of the Dry Tropospheric Correction, applied to the Level 2 data from cycle 24. The global RMS value of this correction for this cycle is **2214 mm** and Figure 6-21 shows there has been very little change in this value from previous cycles.

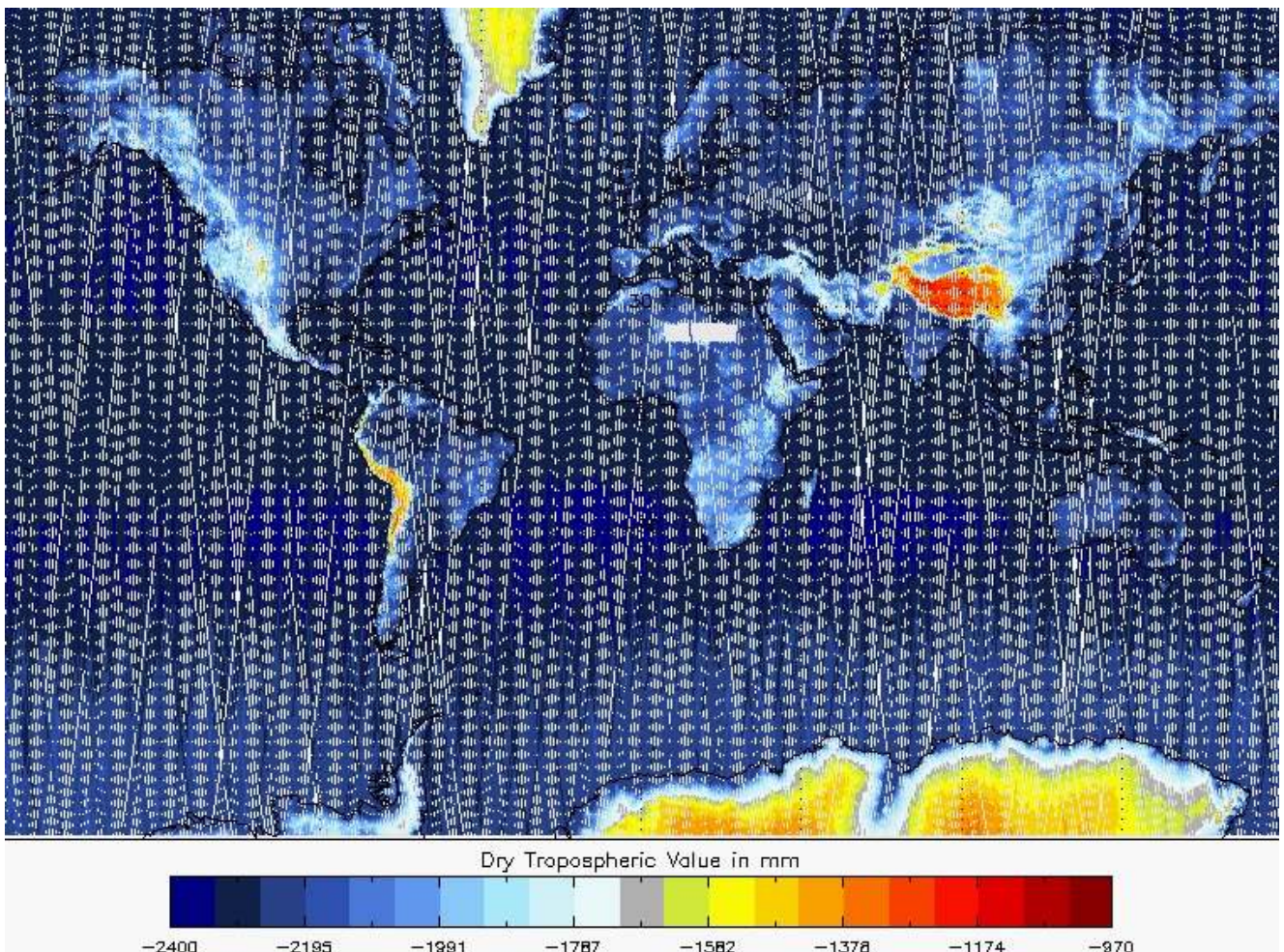


Figure 6-20 Global plot of for Dry Tropospheric Correction for cycle 24.

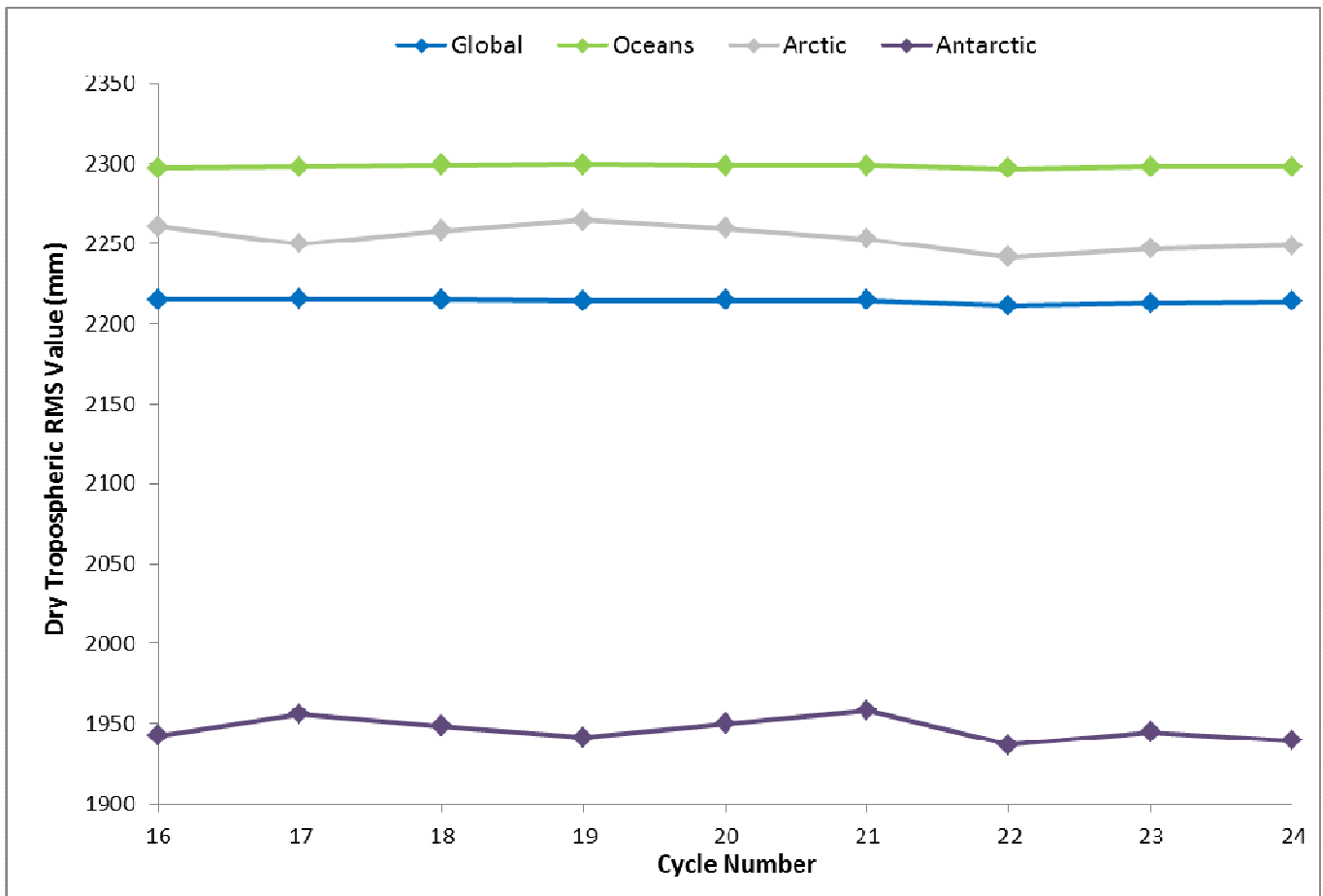


Figure 6-21 Dry Tropospheric Correction RMS value trend for each 30-day cycle.

### 6.7.2 WET TROPOSPHERIC CORRECTION

The wet troposphere correction is the correction for the path delay in the radar return signal due to liquid water in the atmosphere. It has a typical range from 0 to 50cm.

Unlike the Dry Tropospheric Correction, the Wet Tropospheric Correction is retrieved directly from ECMWF analysed grids. These correction files are then simply formatted to the CryoSat PDS file standard before being directly used in the processor.

Figure 6- shows, geographically, the value of the Wet Tropospheric Correction, applied to the Level 2 data. The global RMS value of this correction for Cycle 24 is **154 mm** and Figure 6-23 shows there has been a small steady change from previous cycles.



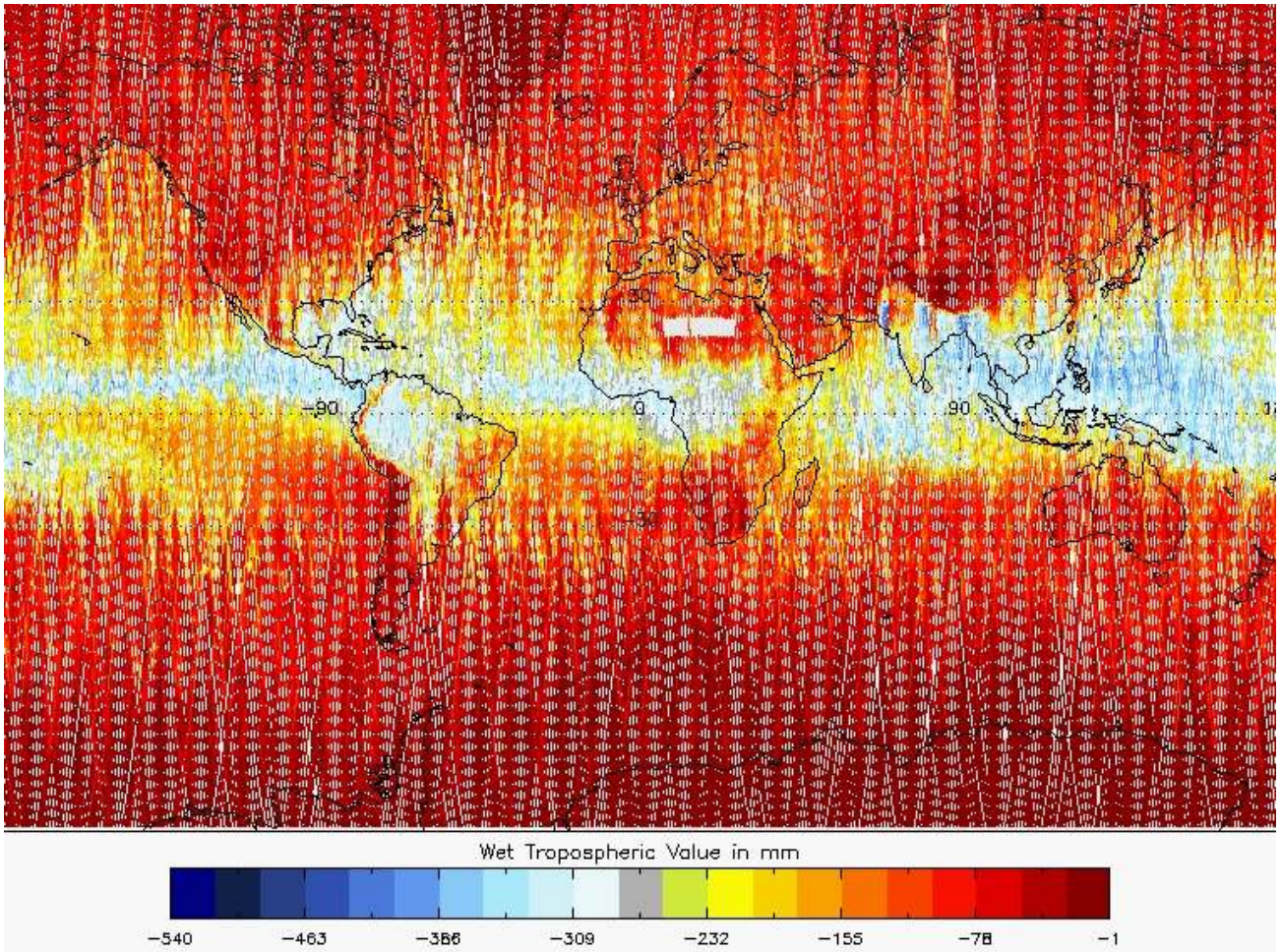


Figure 6-22 Global plot for Wet Tropospheric Correction for cycle 24.

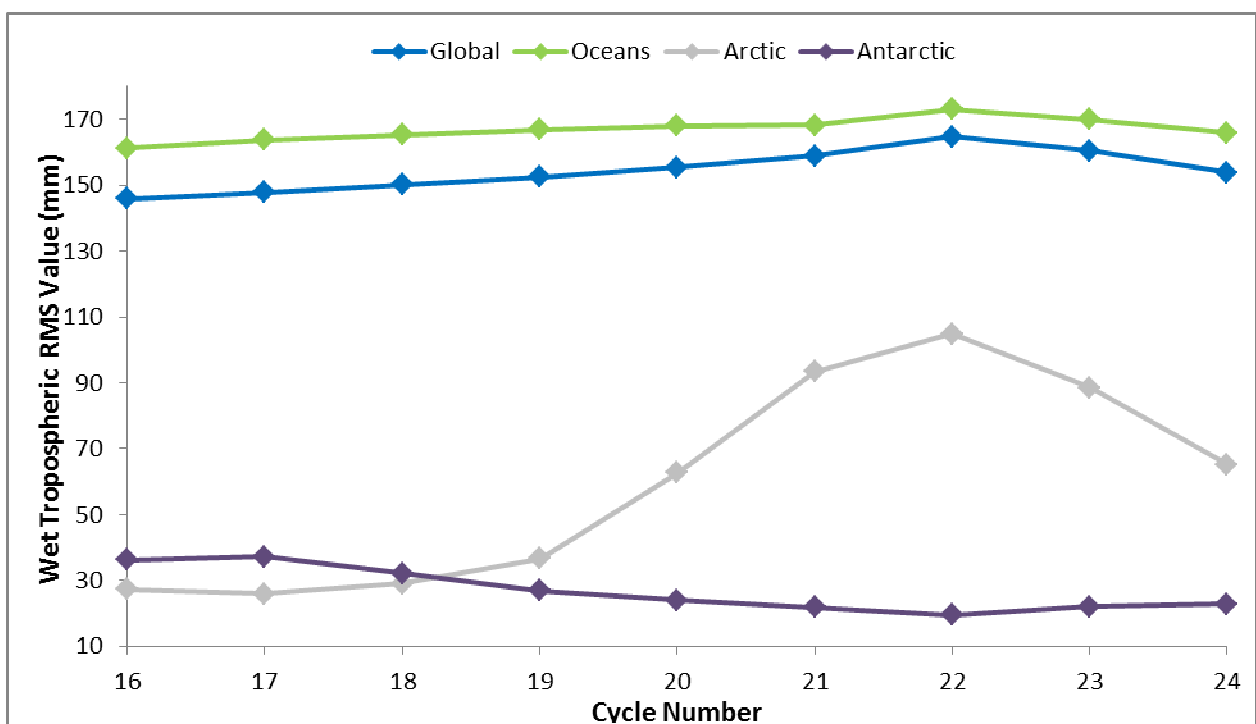


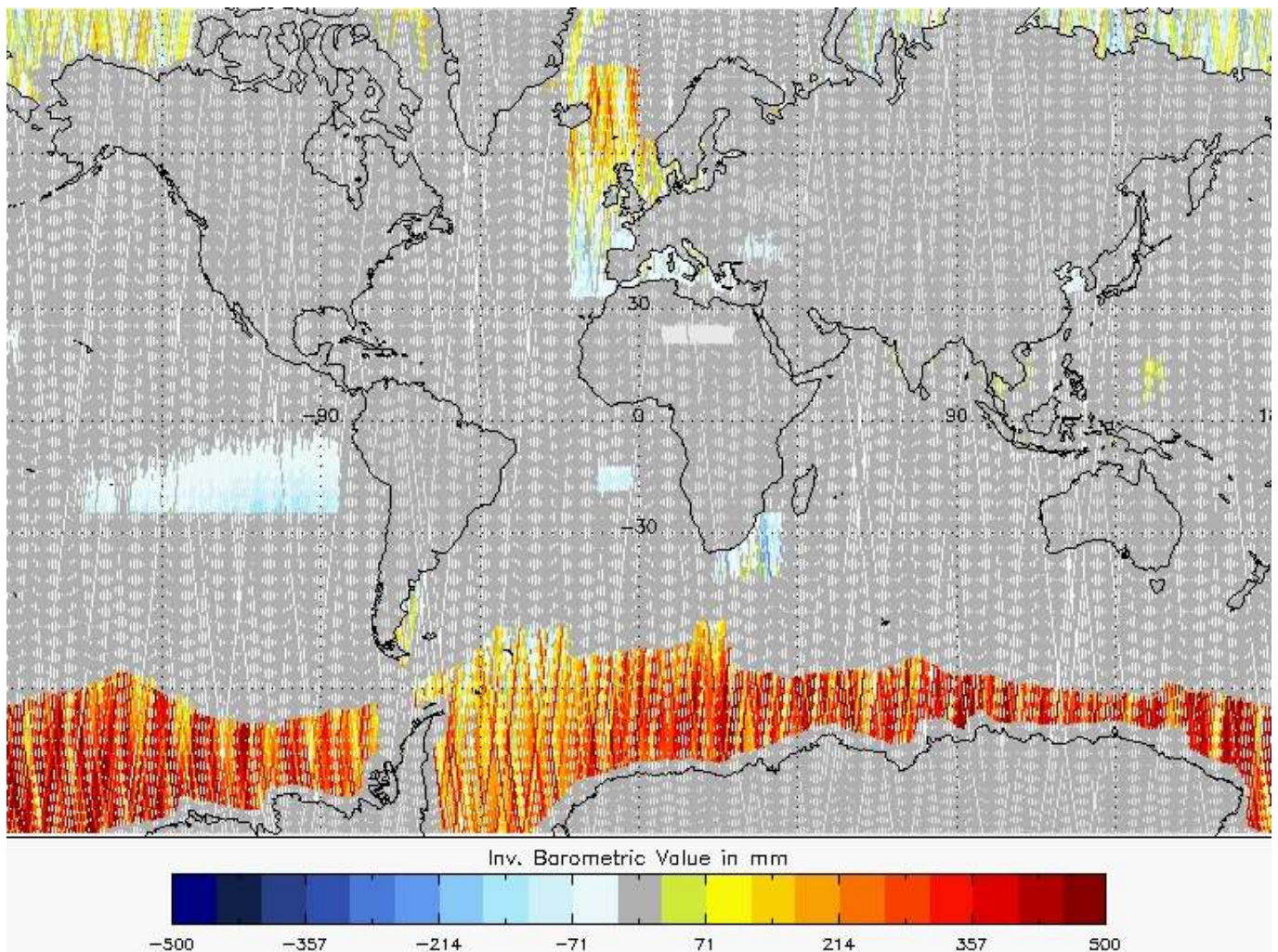
Figure 6-23 Wet Tropospheric Correction RMS value trend for each 30-day cycle.



### 6.7.3 INVERSE BAROMETRIC CORRECTION

The Inverse Barometric Correction compensates for variations in sea surface height due to atmospheric pressure variations, which is known as atmospheric loading. It has a typical range from -15 to +15cm. This correction is only used over sea ice, in SAR mode, and when the surface type is 'open ocean'.

Figure 6-24 shows, geographically, the value of the Inverse Barometric Correction applied to the Level 2 data. The global RMS value of this correction for cycle 24 is **189 mm**.



**Figure 6-24 Global plot for Inverse Barometric Correction for cycle 24.**

Figure 6-25 shows that although there have been steady changes over the global oceans; the value of the correction in the Antarctic Ocean has varied more greatly between cycles. This greater variability in the south polar oceans is due to greater atmospheric pressure variability and hence sea level pressure variability. The Arctic Ocean, on the other hand, is more of an enclosed sea which explains the lower Inverse Barometric Correction values compared to the Antarctic values.



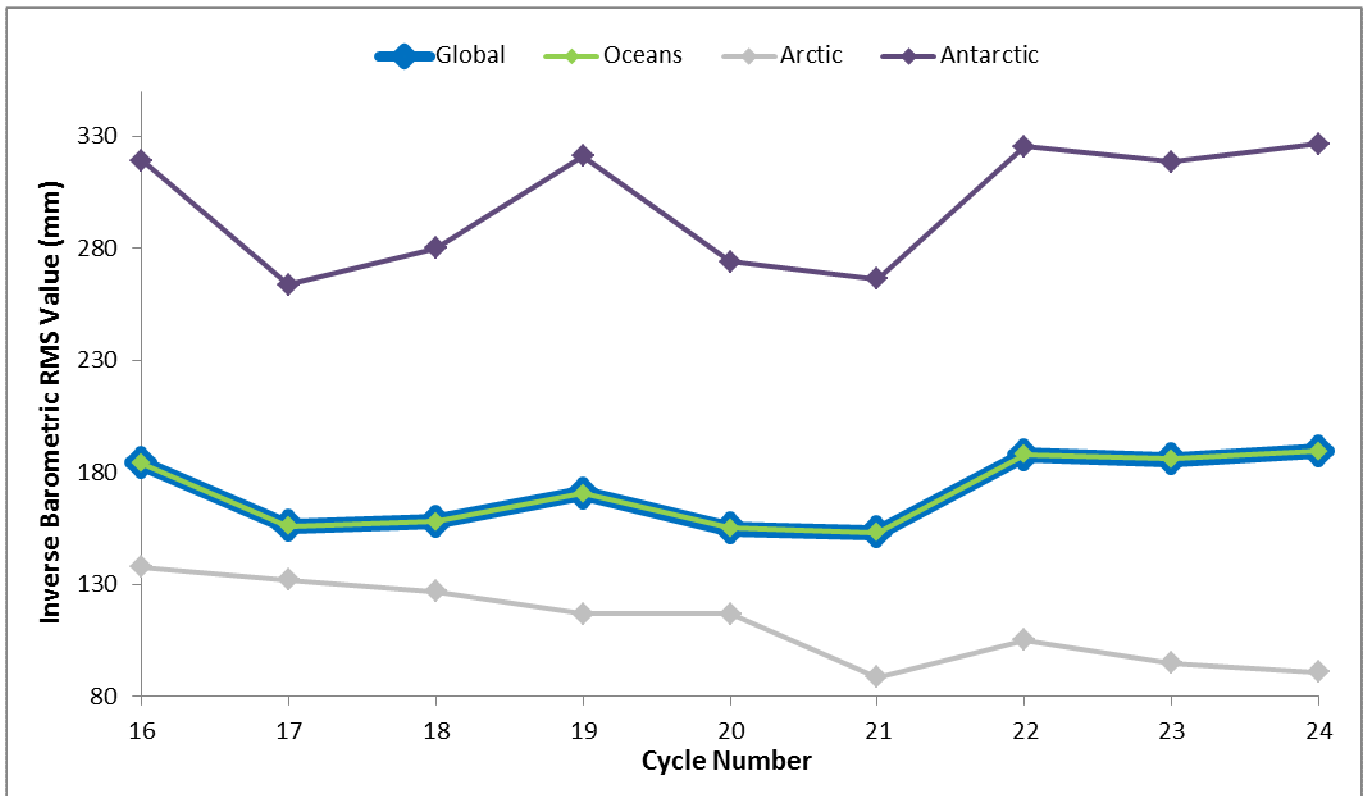


Figure 6-25 Inverse Barometric Correction RMS value trend for each 30-day cycle.

#### 6.7.4 DYNAMIC ATMOSPHERE CORRECTION

The dynamic atmospheric correction compensates for variations in sea surface height due to atmospheric pressure and winds. It has a typical range from -15 to +15cm and is taken from the MOG2D model data provided by Meteo France via the CNES SSALTO system. This correction is only used over ocean, without sea-ice cover, in SARIn and LRM mode, when the surface type is 'open ocean'.

Figure 6-26 shows, geographically, the value of the Dynamic Atmospheric Correction, computed and applied to the Level 2 data. The global RMS value of this correction for cycle 24 is **123 mm**.

Figure 6-27 shows there has been a small steady change from previous cycles.

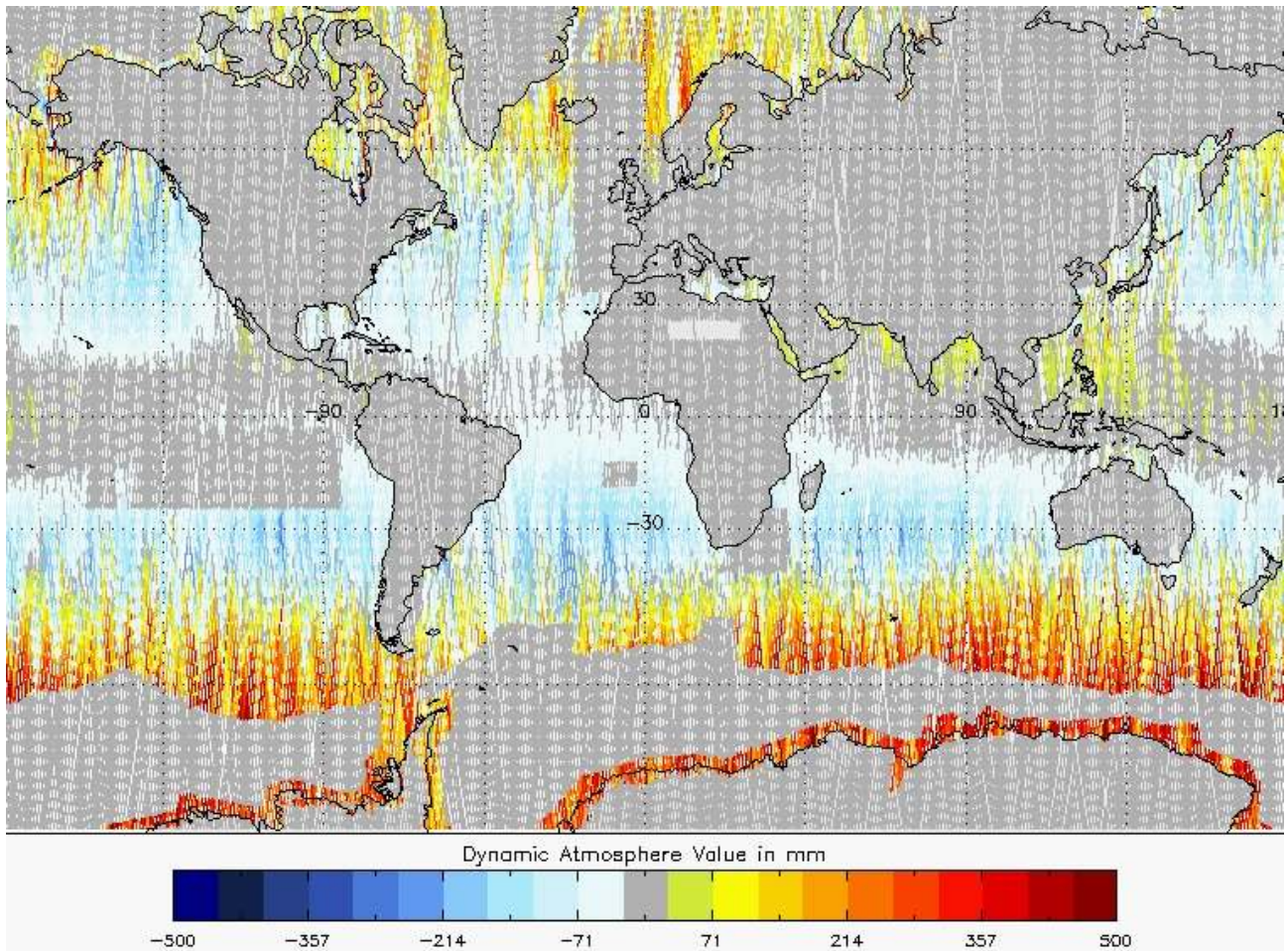


Figure 6-26 Global plot for Dynamic Atmosphere Correction for cycle 24.

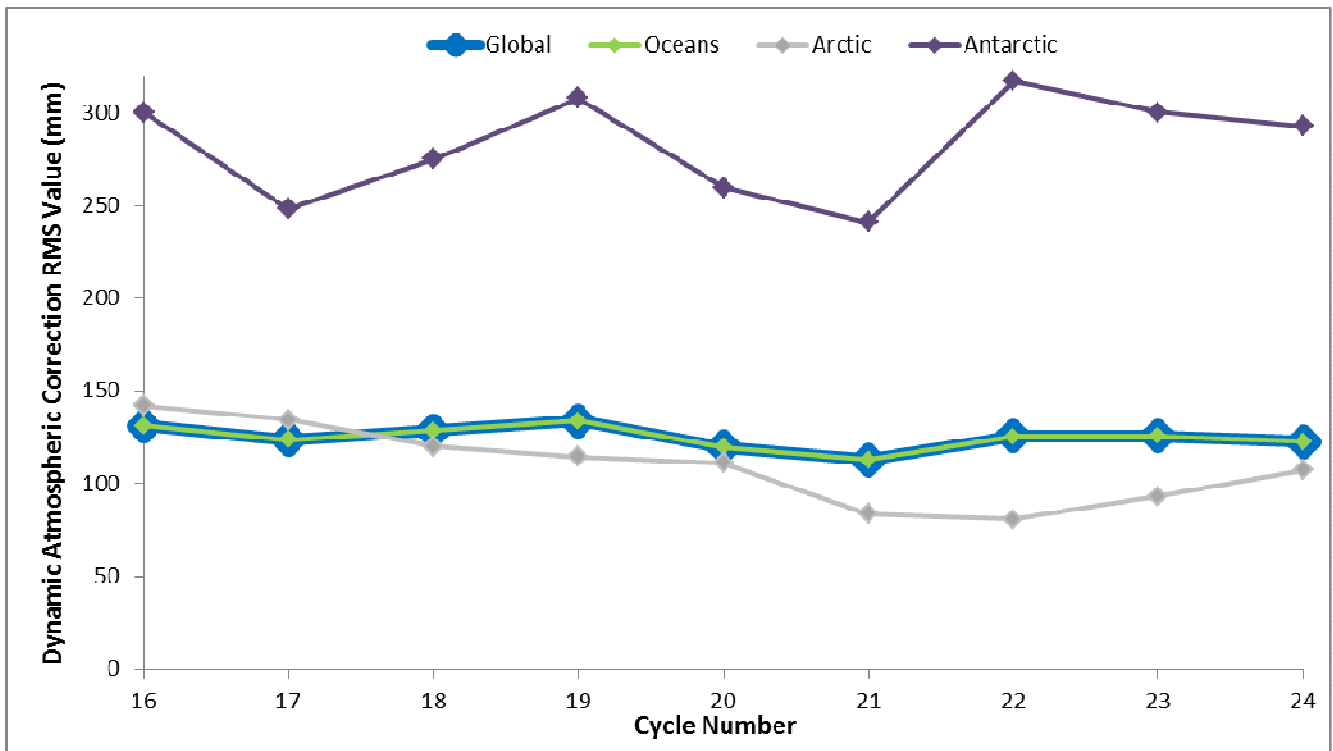


Figure 6-27 Dynamic Atmosphere Correction RMS value trend for each 30-day cycle.



### 6.7.5 IONOSPHERIC CORRECTION

The Ionospheric Correction compensates for the free electrons in the Earth's ionosphere slowing the radar pulse. Solar control of the ionosphere leads to geographic and temporal variations in the free electron content, which can be modelled, or measured, for example using the GPS satellite network.

There are two sources currently used to derive this correction for CryoSat, the Global Ionospheric Map (GIM) and the Bent model. The GIM correction uses GPS measurements and is sourced from CNES via SSALTO as a dynamic daily file. The Bent Model is derived from a static file and is based on knowledge of a solar activity index, such as sunspots.

The correction has a typical range from 0.06 to 0.12 m. CryoSat Level 1B products currently contain the ionospheric Correction values derived from both the GIM and Bent Model. At Level 2, only the ionospheric Correction value applied to the range is provided. This is nominally derived using the GIM by default, however when this is unavailable the Bent model is used as an alternative. Figure 6-28 shows, geographically, the value of the Ionospheric Correction applied to the Level 2 data. The global RMS value of this correction for cycle 24 is **165 mm**.

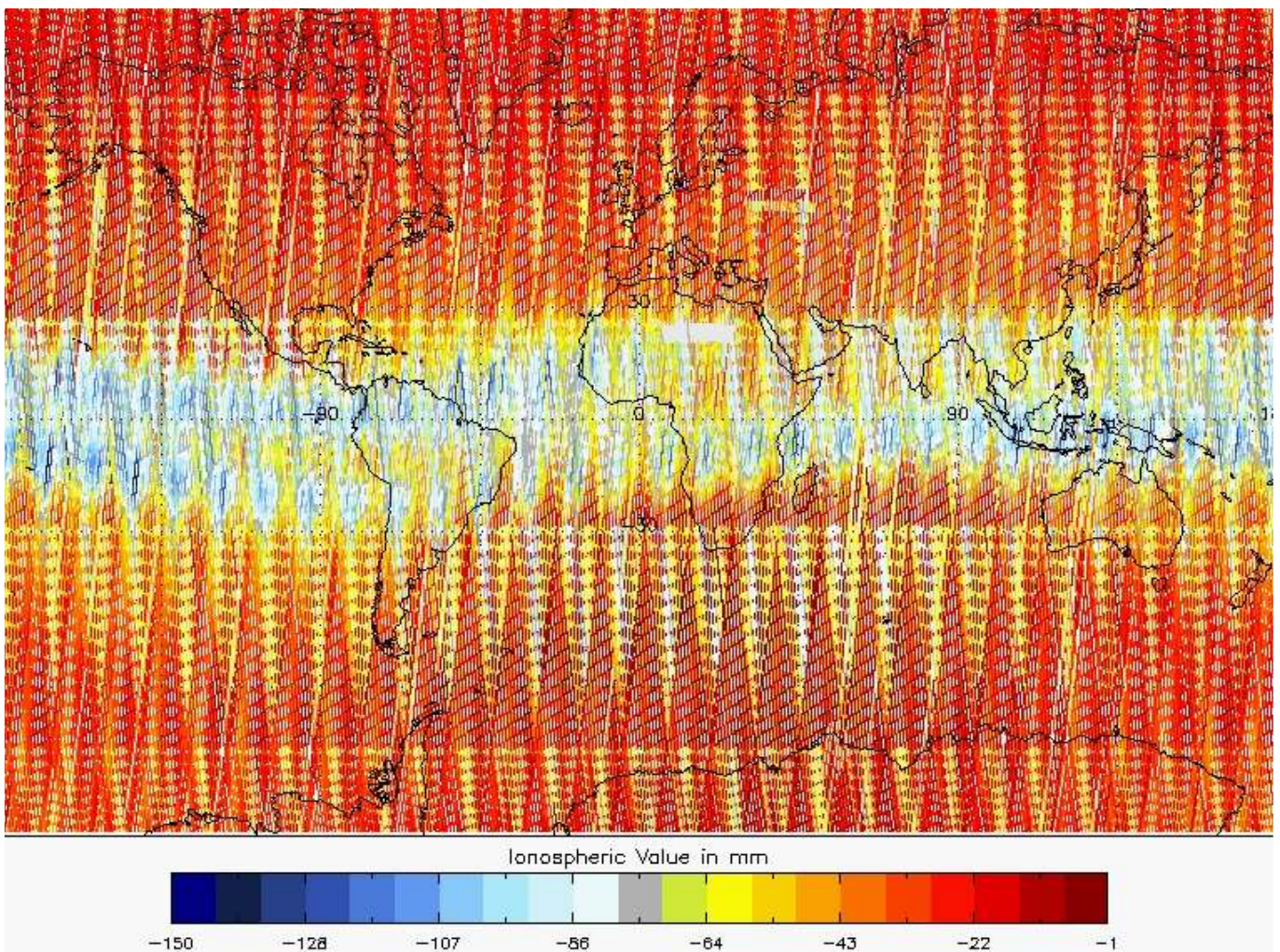


Figure 6-28 Global plot for Ionospheric Correction for cycle 24.

Currently, the Bent Model does not provide values for latitudes >82degrees. However, this should not affect the nominal science data because for offline Level 2 processing the Ionospheric Correction, as shown in Figure 6-28 and Figure 6-29, is taken from the GIM model by default and the Bent Model is only used as an alternative when this GIM is not available.

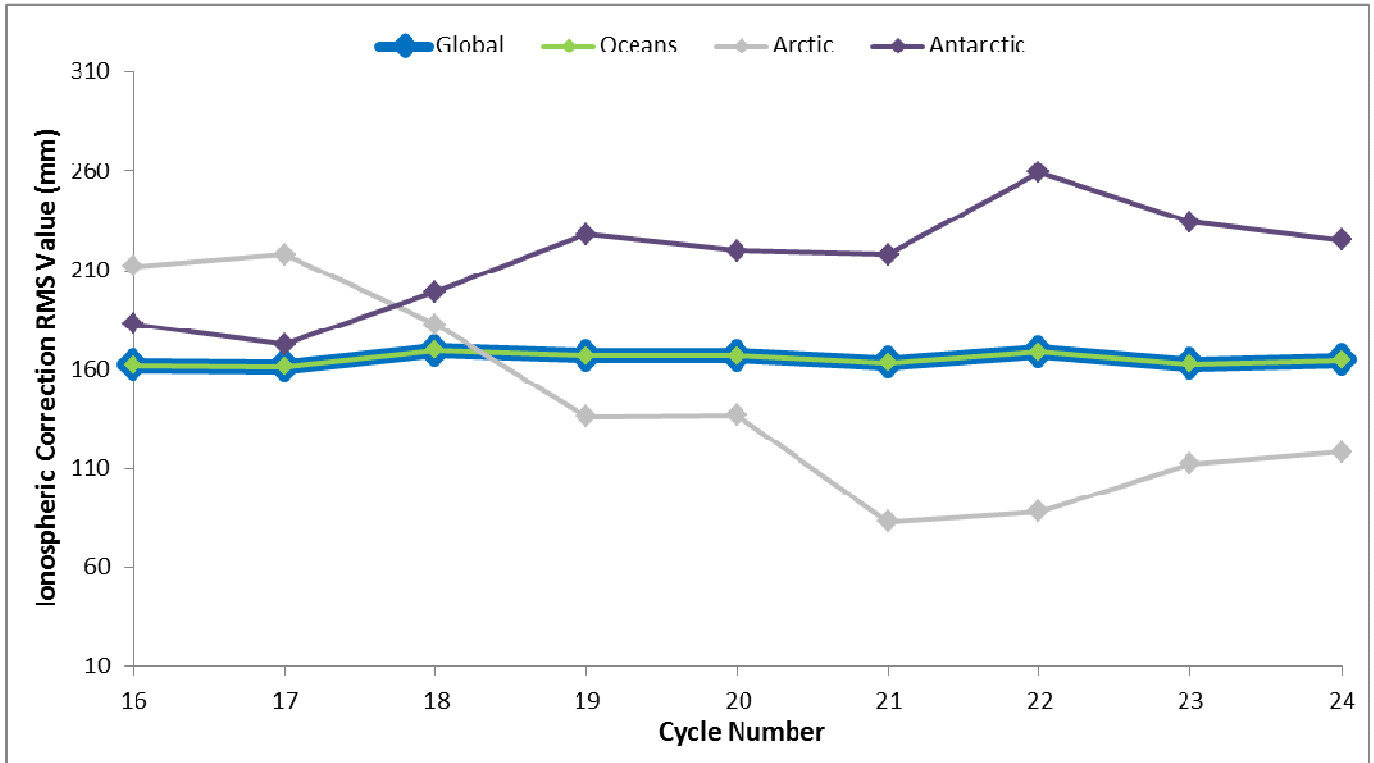


Figure 6-29 Ionospheric Correction RMS value trend for each 30-day cycle.



## 7 ANOMALY REPORTS

An updated list of all known anomalies which have been opened and tracked on the CryoSat Instrument Processing Facility (IPF) and affect the quality of the distributed data products, is provided at the link below:

<https://earth.esa.int/web/quest/missions/cryosat/product-status>

This list of anomalies is complete and up to date as of 08 March 2013 and is updated on a regular basis.

## **8 README DOCUMENTS ON PERFORMANCE AND QUALITY**

This section lists any current readme documents or notifications which have been issued and are relevant to the quality of CryoSat data.

There were no readme documents issued during the period covered by this cycle.