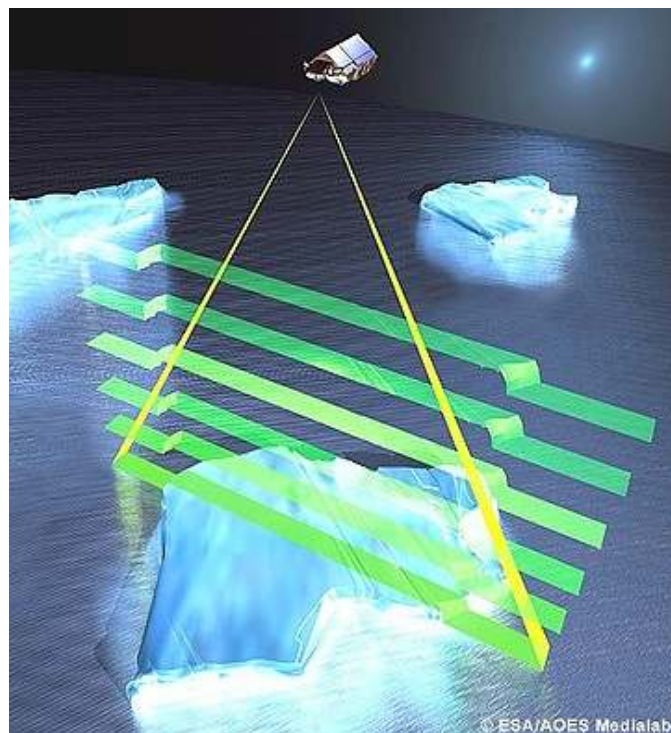


# **CRYOSAT**

## **CYCLIC REPORT**



### **CYCLE #17**

**10<sup>TH</sup> FEBRUARY 2012 – 10<sup>TH</sup> MARCH 2012**

---

|                                 |                    |
|---------------------------------|--------------------|
| Prepared by/ préparé par        | CryoSat IDEAS Team |
| Reference/ référence            |                    |
| Issue/ édition                  | 2                  |
| Revision/ révision              | 0                  |
| Date of issue/ date d'édition   | 19 August 2013     |
| Document type/ type de document | Technical Note     |

**A P P R O V A L**

|                       |                                  |                         |                               |
|-----------------------|----------------------------------|-------------------------|-------------------------------|
| Title<br><i>titre</i> | CryoSat Cyclic Report – Cycle 17 | Issue 2<br><i>issue</i> | Revision 0<br><i>revision</i> |
|-----------------------|----------------------------------|-------------------------|-------------------------------|

|                         |                       |                     |                   |
|-------------------------|-----------------------|---------------------|-------------------|
| Author<br><i>auteur</i> | IDEAS CryoSat QC Team | Date<br><i>date</i> | 19 August<br>2013 |
|-------------------------|-----------------------|---------------------|-------------------|

**C H A N G E L O G**

|  |                       |                             |                     |
|--|-----------------------|-----------------------------|---------------------|
| Reason for change<br><i>raison du changement</i> | Issue<br><i>issue</i> | Revision<br><i>revision</i> | Date<br><i>date</i> |
|  |                       | 0                           |                     |

**C H A N G E R E C O R D**

ISSUE: 2 REVISION: 0

|  |                           |                                      |
|--|---------------------------|--------------------------------------|
| Reason for change<br><i>raison du changement</i> | Page(s)<br><i>page(s)</i> | Paragraph(s)/<br><i>paragraph(s)</i> |
|  |                           |                                      |

## T A B L E O F C O N T E N T S

|  |           |
|--|-----------|
| <b>1 INTRODUCTION .....</b>                                  | <b>1</b>  |
| 1.1 Acronyms and Abbreviations .....                         | 2         |
| 1.2 Referenced Documents .....                               | 2         |
| <b>2 CYCLE OVERVIEW .....</b>                                | <b>3</b>  |
| <b>3 SOFTWARE &amp; AUX FILE VERSION CONFIGURATION .....</b> | <b>4</b>  |
| 3.1 IPF Software Version .....                               | 4         |
| 3.2 Processor Versions for IPF1 and IPF2.....                | 4         |
| 3.3 Auxiliary Files.....                                     | 5         |
| 3.3.1 Static Auxiliary Files .....                           | 5         |
| 3.3.2 Dynamic Auxiliary Files .....                          | 6         |
| 3.3.3 Changes of Auxiliary Files during the cycle.....       | 6         |
| <b>4 PDS STATUS .....</b>                                    | <b>7</b>  |
| 4.1 SIRAL Instrument Unavailability .....                    | 7         |
| 4.2 SIRAL Level 0 Data Availability .....                    | 7         |
| 4.3 SIRAL Level 1B and Level 2 Data Availability.....        | 8         |
| <b>5 SIRAL HEALTH MONITORING .....</b>                       | <b>9</b>  |
| 5.1 Loss of Track .....                                      | 9         |
| 5.2 Acquisition Analysis .....                               | 10        |
| <b>6 DATA QUALITY CONTROL.....</b>                           | <b>11</b> |
| 6.1 Product Format Checks .....                              | 11        |
| 6.2 Software Version Checks.....                             | 11        |
| 6.3 Auxiliary Data File Usage Checks.....                    | 11        |
| 6.4 Product Parameters.....                                  | 12        |
| 6.4.1 Monitoring of SIRAL Mode Changes .....                 | 12        |
| 6.4.2 Surface Type.....                                      | 14        |
| 6.4.3 Backscatter (Sigma0).....                              | 15        |
| 6.4.4 Waveform Peakiness .....                               | 18        |
| 6.4.5 Freeboard.....   | 21        |
| 6.4.6 Snow Depth.....  | 21        |
| 6.4.7 Sea Ice Concentration.....                             | 22        |
| 6.4.8 Snow Density .....                                     | 22        |
| 6.4.9 Surface Height .....                                   | 22        |
| 6.5 Quality Flags.....                                       | 24        |
| 6.6 Crossover Analysis .....                                 | 25        |
| 6.6.1 CrossOver Statistics.....                              | 25        |
| 6.6.2 Elevation Maps.....                                    | 26        |
| 6.6.3 Backscatter (sigma0) Maps.....                         | 28        |
| 6.7 External Auxiliary Corrections.....                      | 30        |
| 6.7.1 Dry Tropospheric Correction .....                      | 30        |
| 6.7.2 Wet Tropospheric Correction .....                      | 31        |

|   |           |
|---|-----------|
| 6.7.3 Inverse Barometric correction .....                 | 32        |
| 6.7.4 Dynamic Atmosphere correction .....                 | 33        |
| 6.7.5 Ionospheric Correction .....                        | 34        |
| <b>7 ANOMALY REPORTS .....</b>                            | <b>35</b> |
| <b>8 README DOCUMENTS ON PERFORMANCE AND QUALITY.....</b> | <b>36</b> |

# 1 INTRODUCTION

CryoSat is an altimetry satellite built by the European Space Agency and dedicated to polar observation. It embarks on a three-and-a-half-year mission to determine variations in the thickness of the Earth's continental ice sheets and marine ice cover, and to test the prediction of thinning Arctic ice due to climate change.

CryoSat is designed to acquire continuously, switching automatically between its three measurement modes according to a Geographical Mode Mask:

- Synthetic Aperture Radar (SAR) is operated over sea-ice and over some ocean basins and coastal zones.
- SAR Interferometric (SARIn) mode is used over steeply sloping ice-sheet margins, small ice caps and areas of mountain glaciers. It is also used over some major hydrological river basins and some ocean areas with important mesoscale variability.
- Low Resolution Mode (LRM) is operated over the areas of the continental ice sheets, over oceans and over land not covered by other modes.

This CryoSat Cyclic Report is distributed by the IDEAS team to keep the CryoSat community informed of the overall mission performance and the status of the SIRAL instrument.

The report is based on a 30-day reporting period, which has been defined by UCL/MSSL since the Transfer to Operations, as part of the routine QA monitoring activity. This 30-day cycle has been defined purely for the purpose of statistic reporting and does not correspond to an official 30-day sub cycle. The actual repeat cycle for CryoSat is 369 days, which consists of 5344 orbits.

This document is available online at: <http://earth.eo.esa.int/missions/cryosat/reports/cyclic/>.

## **1.1 Acronyms and Abbreviations**

|        |   |
|--------|---|
| AR     | Anomaly Report  |
| CPOM   | Centre for Polar Observation Modelling                  |
| ESOC   | European Space Operation Centre                         |
| FDM    | Fast Delivery Mode                                      |
| GIM    | Global Ionospheric Map                                  |
| IDEAS  | Instrument Data quality Evaluation and Analysis Service |
| IPF    | Instrument Processing Facilities                        |
| L1B/L2 | Level 1B / Level 2                                      |
| LRM    | Low Resolution Mode                                     |
| LTA    | Long Term Archive                                       |
| MF     | Monitoring Facility                                     |
| MSSL   | Mullard Space Science Laboratory                        |
| NRT    | Near Real Time  |
| OCM    | Orbit Control Manoeuvre                                 |
| PDS    | Payload Data System                                     |
| QA     | Quality Assurance                                       |
| QCC    | Quality Control for CryoSat                             |
| SAR    | Synthetic Aperture Radar mode                           |
| SARIn  | SAR Interferometric mode                                |
| SIRAL  | SAR /Interferometric Radar Altimeter                    |
| SPR    | Software Problem Report                                 |
| SW     | Software  |
| TTO    | Transfer to Operations                                  |
| UCL    | University College London                               |

## **1.2 Referenced Documents**

|      |  |
|------|--|
| RD.1 | CRYOSAT Ground Segment Instrument Processing Facility L1b Products Format Specification, CS-RS-ACS-GS-5106, 4.9  |
| RD.2 | CRYOSAT Ground Segment Instrument Processing Facility L2 Products Format Specification, CS-RS-ACS-GS-5123, 2.8   |
| RD.3 | Updated List of CryoSat IPF Anomalies. Latest version is available online at:<br><a href="http://earth.eo.esa.int/missions/cryosat/data_status/">http://earth.eo.esa.int/missions/cryosat/data_status/</a> |

## 2 CYCLE OVERVIEW

**Cyclic Number:** 17  
**Cycle Start:** 10<sup>th</sup> February 2012  
**Cycle End:** 10<sup>th</sup> March 2012

There were no major activities affecting CryoSat data during this reporting period.

The health of the SIRAL instrument and the quality of all Level 1B and Level 2 data products was nominal throughout this cycle.

## 3 SOFTWARE & AUX FILE VERSION CONFIGURATION

### 3.1 IPF Software Version

The current versions of the IPF software installed within the PDS and LTA are listed below:

CryoSat IPF for Level 1 (IPF1): Version **Vk1.0**

CryoSat IPF for Level 2 (IPF2): Version **Vj1.2**

### 3.2 Processor Versions for IPF1 and IPF2

The current versions of each processor versions within IPF1 and IPF2 are listed below:

| L1B Products             | Processor Version |
|--------------------------|-------------------|
| L1B LRM                  | SIR1LRM/4.0       |
| L1B SAR                  | SIR1SAR/4.0       |
| L1B SARIN                | SARIN/4.0         |
| L1B FDM                  | SIR1FDM/2.3       |
| CAL1 LRM                 | SIR1LRC1/3.9      |
| CAL1 SAR                 | SIR1SAC1/3.9      |
| CAL1 SARIN               | SIR_SIC1/3.9      |
| CAL2 SAR                 | SIR1SAC2/4.0      |
| CAL2 SARIN (RX1 and RX2) | SIR1SIC2/3.9      |

**Table 3-1 IPF1 Processor Versions.**

| L2 Products | Processor Version |
|-------------|-------------------|
| L2 FDM      | IPF2FDM/2.1       |
| L2 LRM      | IPF2LRM/2.4       |
| L2 SAR      | IPF2SAR_A/2.4     |
| L2 SARIN    | IPF2SRN/2.4       |
| L2 GDR      | IPF2GDR_A/2.4     |

**Table 3-2 IPF2 Processor Versions.**

The complete historic IPF baseline is available online at:

[http://earth.eo.esa.int/missions/cryosat/ipf\\_baseline/](http://earth.eo.esa.int/missions/cryosat/ipf_baseline/)



### 3.3 Auxiliary Files

#### 3.3.1 STATIC AUXILIARY FILES

CryoSat processing for this reporting period used the following static auxiliary files:

| Static Auxiliary File                            | Current ADF in use                                     |
|--|--|
| Cartwright Table (Solid Earth Tide)              | CS_OPER_AUX_CARTWR_0000000T000000_9999999T999999_0002  |
| Digital Surface Model                            | CS_OPER_AUX_DEMMSL_0000000T000000_9999999T999999_0005  |
| Bent Modified Dip Map Model                      | CS_OPER_AUX_DIPMAP_0000000T000000_9999999T999999_0002  |
| Geoid  | CS_OPER_AUX_GEOID__0000000T000000_9999999T999999_0002  |
| Surface Identification Grid                      | CS_OPER_AUX_LS_MAP_0000000T000000_9999999T999999_0001  |
| Bent Ionospheric Correction File                 | CS_OPER_AUX_MICOEF_0000000T000000_9999999T999999_0002  |
| Mean Sea Surface                                 | CS_OPER_AUX_MSSURF_0000000T000000_9999999T999999_0005  |
| Ocean Tides                                      | CS_OPER_AUX_OCTIDE_0000000T000000_9999999T999999_0003  |
| Ocean Depth/Land Elevation Grid                  | CS_OPER_AUX_ODLE___0000000T000000_9999999T999999_0002  |
| Climatology pressure grids for each month at 00h | CS_OPER_AUX_PRSS00_0000000T000000_9999999T999999_0001  |
| Climatology pressure grids for each month at 06h | CS_OPER_AUX_PRSS06_0000000T000000_9999999T999999_0001  |
| Climatology pressure grids for each month at 12h | CS_OPER_AUX_PRSS12_0000000T000000_9999999T999999_0001  |
| Climatology pressure grids for each month at 18h | CS_OPER_AUX_PRSS18_0000000T000000_9999999T999999_0001  |
| S1 tide grid of monthly mean of global amplitude | CS_OPER_AUX_S1AMPL_0000000T000000_9999999T999999_0001  |
| S2 tide grid of monthly mean of global amplitude | CS_OPER_AUX_S2AMPL_0000000T000000_9999999T999999_0001  |
| S1 tide grid of monthly mean of global phase     | CS_OPER_AUX_S1PHAS_0000000T000000_9999999T999999_0001  |
| S2 tide grid of monthly mean of global phase     | CS_OPER_AUX_S2PHAS_0000000T000000_9999999T999999_0001  |
| Snow Depth Climatology File for February         | CS_OPER_AUX_SDC_02_0000000T000000_9999999T999999_0005  |
| Snow Depth Climatology File for March            | CS_OPER_AUX_SDC_03_0000000T000000_9999999T999999_0005  |
| Sea Ice Concentration Climatology for February   | CS_OPER_AUX_SICC02_0000000T000000_9999999T999999_0005  |
| Sea Ice Concentration Climatology for March      | CS_OPER_AUX_SICC03_0000000T000000_9999999T999999_0005  |
| Sea State Bias                                   | CS_OPER_AUX_SSBIAAS_0000000T000000_9999999T999999_0003 |
| Tidal Loading                                    | CS_OPER_AUX_TDLOAD_0000000T000000_9999999T999999_0003  |
| Altimeter Wind Speed table (Abdalla2007 Model)   | CS_OPER_AUX_WNDCHE_0000000T000000_9999999T999999_0001  |

**Table 3-3 List of current static auxiliary files in use.**

### 3.3.2 DYNAMIC AUXILIARY FILES

CryoSat processing for this reporting period also used the following dynamic auxiliary files:

| Dynamic Auxiliary File         | Current ADF in use  |
|--------------------------------|---|
| Solar Activity Index           | CS_OPER_AUX_SUNACT_19910101T000000_20130301T000000_0001;<br>CS_OPER_AUX_SUNACT_19910101T000000_20130401T000000_0001 |
| Gaussian Altimetric Grid       | CS_OPER_AUX_ALTGRD_20110504T100000_20301231T235959_0002   |
| GPS Ionospheric Map            | CS_OPER_AUX_IONGIM_YYYYMMDDT000000_YYYYMMDDT235959<br><i>Updated daily</i>  |
| Polar Location                 | CS_OPER_AUX_POLLOC_19870101T000000_YYYYMMDDT000000<br><i>Updated twice a week</i>                                   |
| Wet Troposphere                | CS_OPER_AUX_WETTRP_YYYYMMDDTxx0000_YYYYMMDDTxx0000<br><i>Meteo File *</i>   |
| Wind U-component               | CS_OPER_AUX_U_WIND_YYYYMMDDTxx0000_YYYYMMDDTxx0000<br><i>Meteo File *</i>   |
| Wind V-component               | CS_OPER_AUX_V_WIND_YYYYMMDDTxx0000_YYYYMMDDTxx0000<br><i>Meteo File *</i>   |
| Surface Pressure               | CS_OPER_AUX_SURFP_YYYYMMDDTxx0000_YYYYMMDDTxx0000<br><i>Meteo File *</i>  |
| Sea Mean Pressure              | CS_OPER_AUX_SEAMPS_YYYYMMDDTxx0000_YYYYMMDDTxx0000<br><i>Meteo File *</i>   |
| Dynamic Atmospheric Correction | CS_OPER_AUX_MOG_2D_YYYYMMDDTxx0000_YYYYMMDDTxx0000<br><i>Meteo File *</i>   |
| Dynamic Sea Ice Concentration  | CS_OPER_AUX_SEA_IC_YYYYMMDDT000000_YYYYMMDDT235959<br><i>Updated every 3 days</i>                                   |

**Table 3-4 List of dynamic auxiliary files in use.**

\*Meteo files are provided daily for each 6 hour grid (00h, 06h, 12h and 18h). Each product requires at least two, or sometimes three, of each Meteo file from the two grids between which the product validity lies.

### 3.3.3 CHANGES OF AUXILIARY FILES DURING THE CYCLE

During the reporting period, there was no static auxiliary file updates.

## 4 PDS STATUS

### 4.1 SIRAL Instrument Unavailability

The following unavailability periods have been noted for SIRAL data during this cycle:

| UTC Start           | UTC Stop            | Reason                 | Planned |
|---------------------|---------------------|------------------------|---------|
| 16/02/2012 05:47:01 | 16/02/2012 07:33:01 | Orbit Manoeuvre        | Yes     |
| 01/03/2012 10:29:17 | 22/03/2012 11:10:57 | Ground Segment Anomaly | No      |

Table 4-1 SIRAL instrument unavailability periods for the reporting cycle.

The historic list of all SIRAL data unavailability periods is available online at:

[http://earth.eo.esa.int/missions/cryosat/unavailability\\_periods/](http://earth.eo.esa.int/missions/cryosat/unavailability_periods/).

### 4.2 SIRAL Level 0 Data Availability

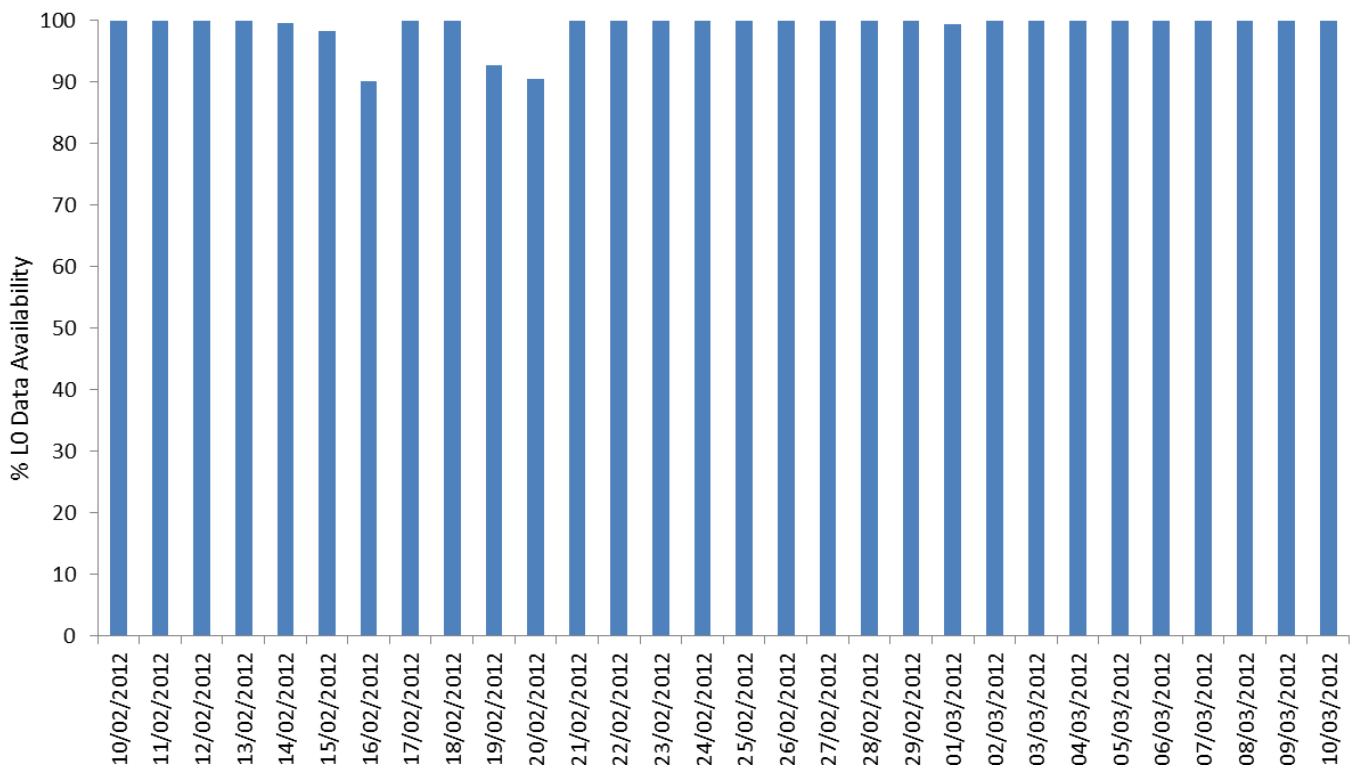


Figure 4-1 SIRAL Level 0 Data Availability for cycle 17.

SIRAL Level 0 data was available at all times throughout this cycle, except for those periods listed in Table 4-1 when the instrument was unavailable due to planned or unplanned activities.

### 4.3 SIRAL Level 1B and Level 2 Data Availability

The availability of all Level 1B and Level 2 data products for each day throughout this cycle is provided in Figure 4-2.

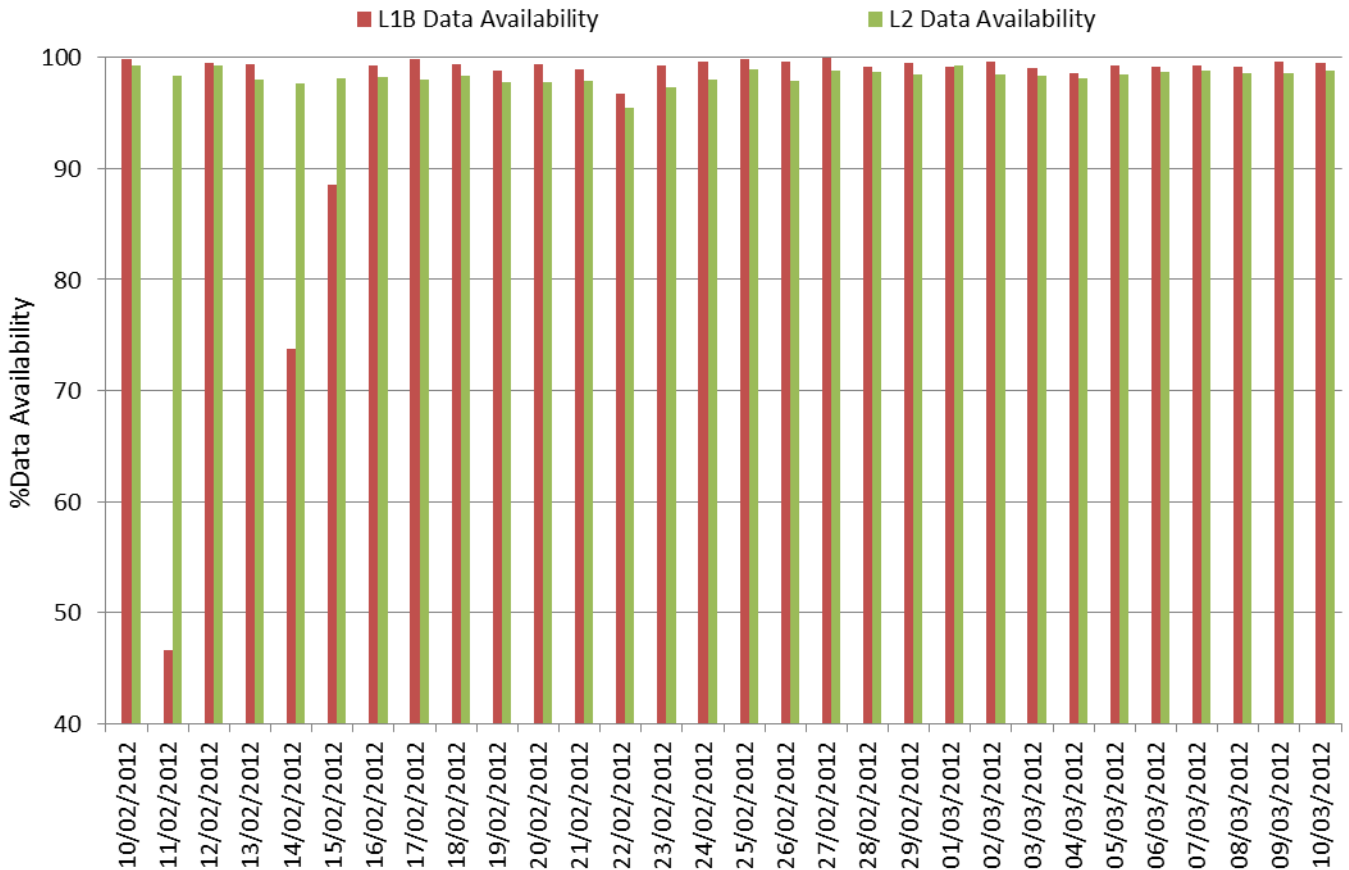


Figure 4-2 SIRAL Level 1B and Level 2 Data Availability for cycle 17.

The information in Figure 4-1 and Figure 4-2 is extracted daily from the CryoSat Monitoring Facility and forms part of the routine data quality checks which are carried out to monitor data production. The availability of each level of data is calculated with respect to the available data from the preceding processing level.

## 5 SIRAL HEALTH MONITORING

Various SIRAL parameters extracted from the Level 0 and the Monitoring Data Products are monitored on a daily basis in order to check the health and status of the SIRAL instrument.

### 5.1 Loss of Track

It is expected that SIRAL can lose track over land areas and this is a nominal feature of the instrument. However, this tracking is monitored to ensure there is no loss of track over large areas of ocean as this could indicate a potential problem with the instrument.

Figure 5-1 shows a global plot from February 2012, presenting areas of loss of track. This information is extracted from the Level 0 data products and is monitored routinely for each of the different SIRAL modes. During this reporting period, the loss of SIRAL track was nominal for all three SIRAL modes.

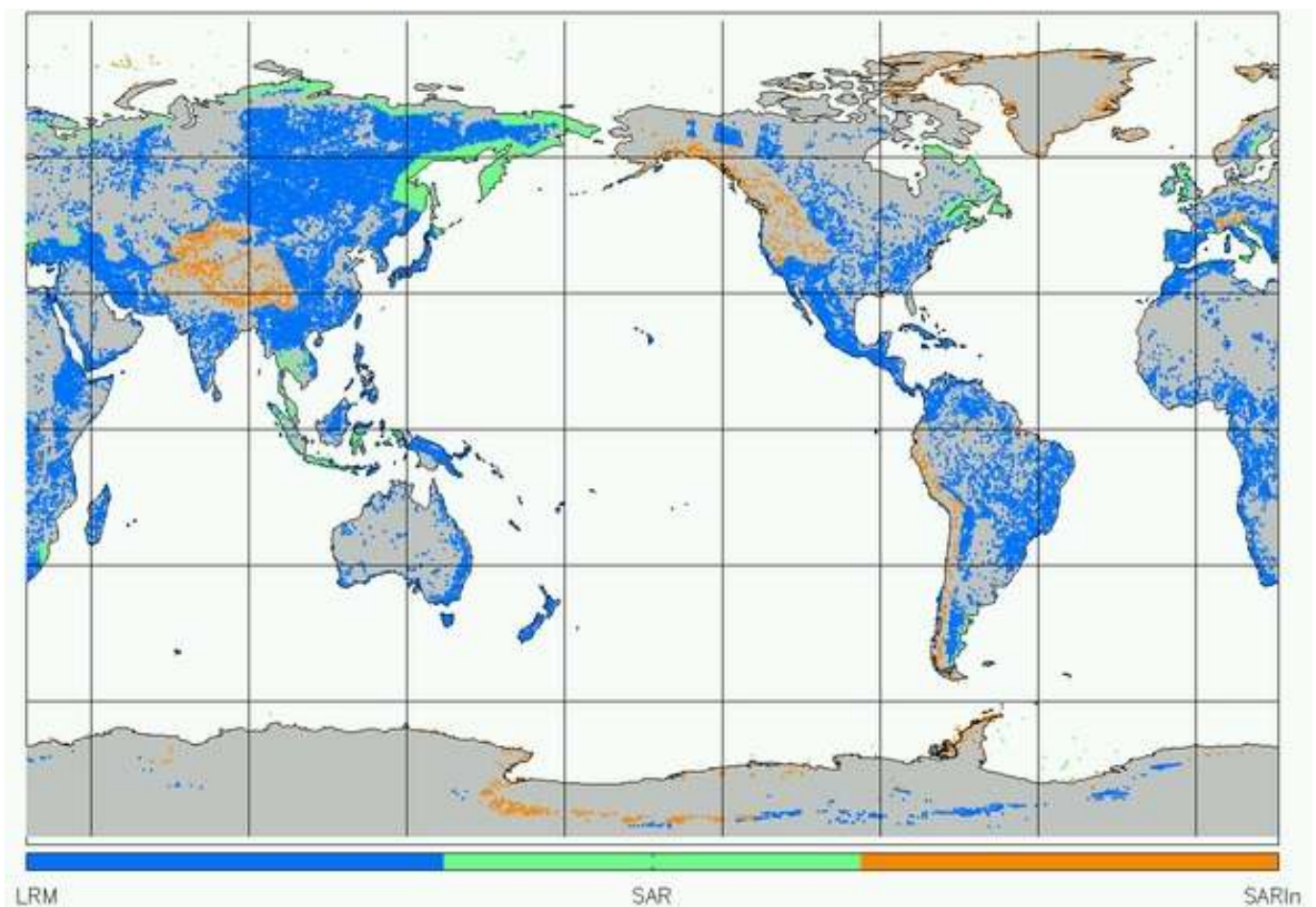


Figure 5-1 Global plot showing areas of loss of track in all SIRAL modes Level 0 data during February 2012.

## 5.2 Acquisition Analysis

The location and duration of SIRAL acquisition packets are also monitored on a routine basis to check the health and status of the instrument.

The plots showing Acquisition are generated by extracting the value of the parameter H0\_Stop (altitude instruction H0 when scanning stopped) from within the SIRAL Research\_Phase\_Report provided in the Level 0 Acquisition products SIR1ACQ\_0\_ and SIR2ACQ\_0\_. The value extracted from the product is then converted to km.

Figure 5-2 shows the location of SIRAL acquisition packets during February 2012. As shown, there are no long periods of acquisition over ocean areas indicating that the instrument acquisition was nominal during the reporting period.

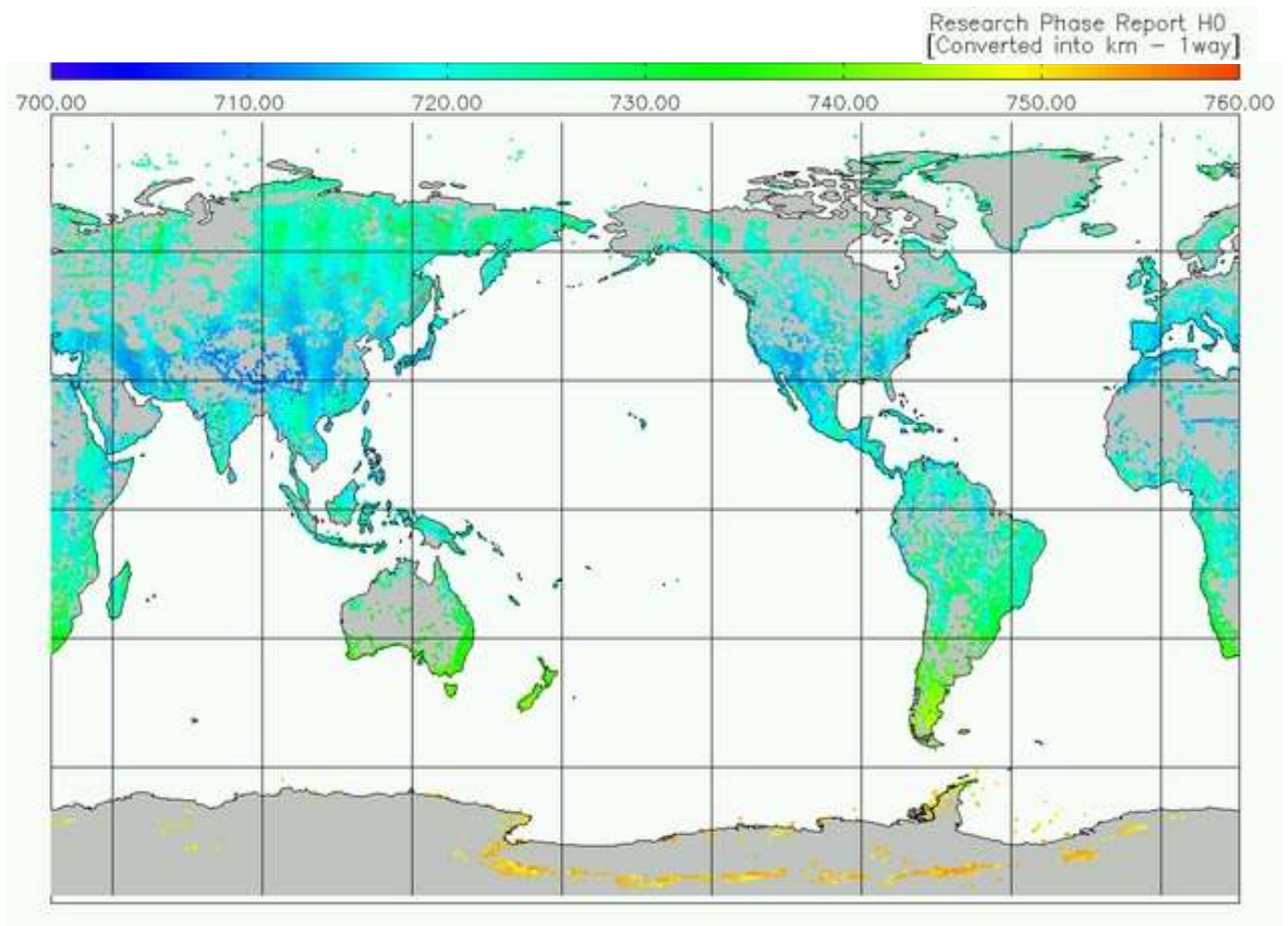


Figure 5-2 Global plot showing the location of SIRAL Acquisition packets during February 2012.



## 6 DATA QUALITY CONTROL

### 6.1 Product Format Checks

As part of the Quality Control activities, a check is conducted to ensure that all expected Level 1B and Level 2 data products have been generated with the correct format and that each CryoSat product is composed of two files; XML Header (.HDR) and Product File (.DBL).

| Product Filename | Format Check Discrepancy |
|------------------|--------------------------|
| None             | N/A                      |

During cycle 17, there were no product format errors detected through this check.

### 6.2 Software Version Checks

As part of the Quality Control activities, a check is conducted to ensure that all CryoSat products have been generated with the correct software version, listed in Table 3-1 and Table 3-2.

| Product Filename | Incorrect SW version detected |
|------------------|-------------------------------|
| None             | N/A                           |

During cycle 17, there were no software version errors detected through this check.

### 6.3 Auxiliary Data File Usage Checks

All Level 1B and Level 2 data products are routinely checked to ensure the process has used all the relevant auxiliary data files in order to provide all the necessary geophysical corrections.

| Product Filename | Missing ADF |
|------------------|-------------|
| None             | N/A         |

During cycle 17, there were no data products flagged through this check.

## 6.4 Product Parameters

### 6.4.1 MONITORING OF SIRAL MODE CHANGES

CryoSat is designed to acquire continuously whilst switching automatically between its three nominal measurement modes, LRM, SAR and SARIn, according to a Geographical Mode Mask. Additionally, if one SIRAL receiver chain should fail then the instrument can operate in SARIn mode with one channel and this is referred to as SARIn Degraded (SID) mode. As the mode mask is updated regularly primarily to account for changes in sea-ice extent, between the different CryoSat cycles changes are expected in the SAR and LRM mode extents in areas of sea-ice.

Figure 6-1 shows the daily percentages of each SIRAL mode for cycle 17.

Further trends on both a cyclic and weekly basis are available on the MSSL Quality Monitoring website [http://cryosat.mssl.ucl.ac.uk/qa/view\\_mode\\_trend.php?dtlength=7](http://cryosat.mssl.ucl.ac.uk/qa/view_mode_trend.php?dtlength=7).

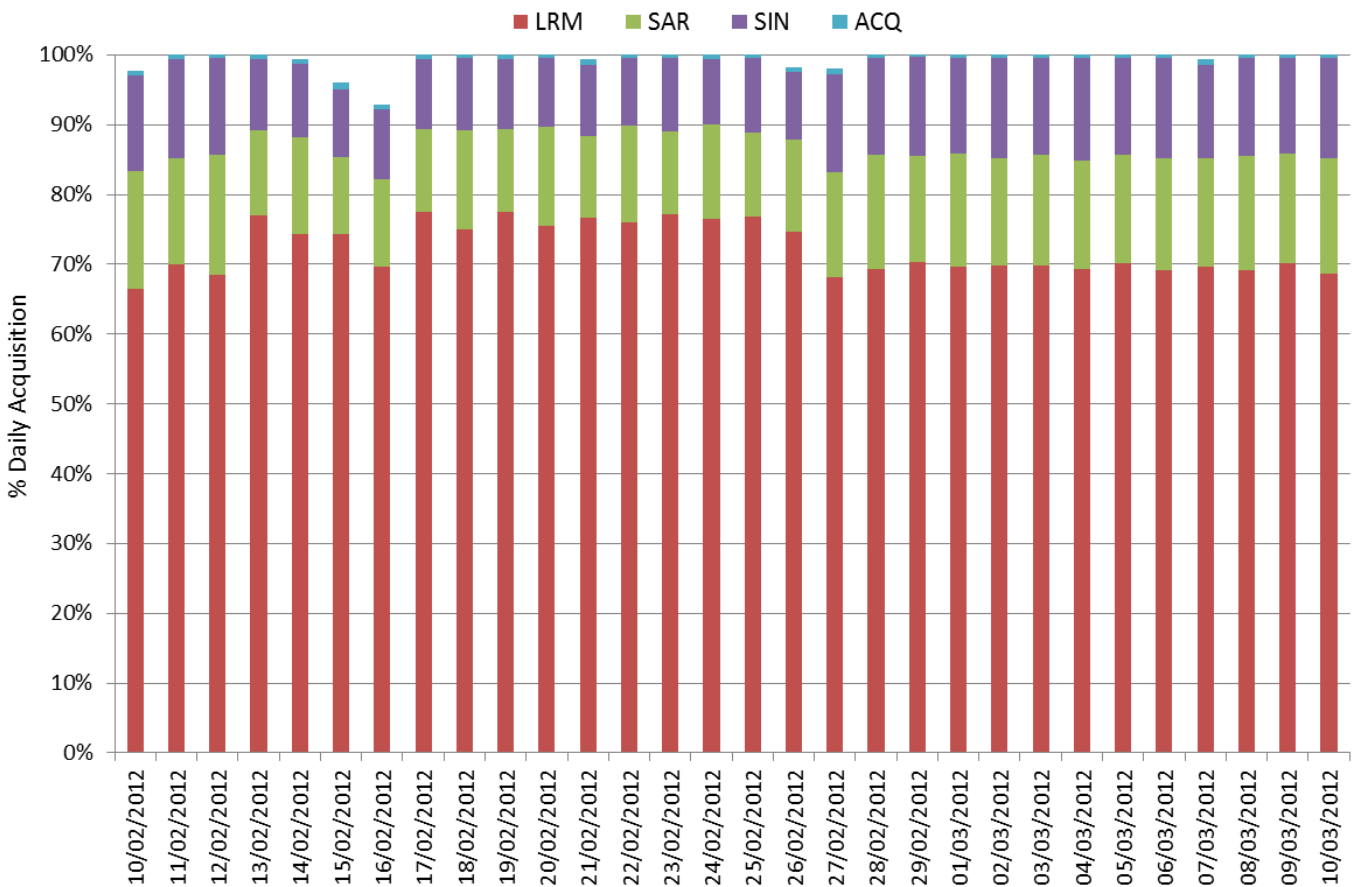


Figure 6-1 Daily percentages of SIRAL modes for cycle 17.



Figure 6-2 shows global and polar plots of the SIRAL Modes acquired during cycle 17. These plots are generated from Level 2 GDR data, which includes a SIRAL Mode indicator for each 20 Hz record.

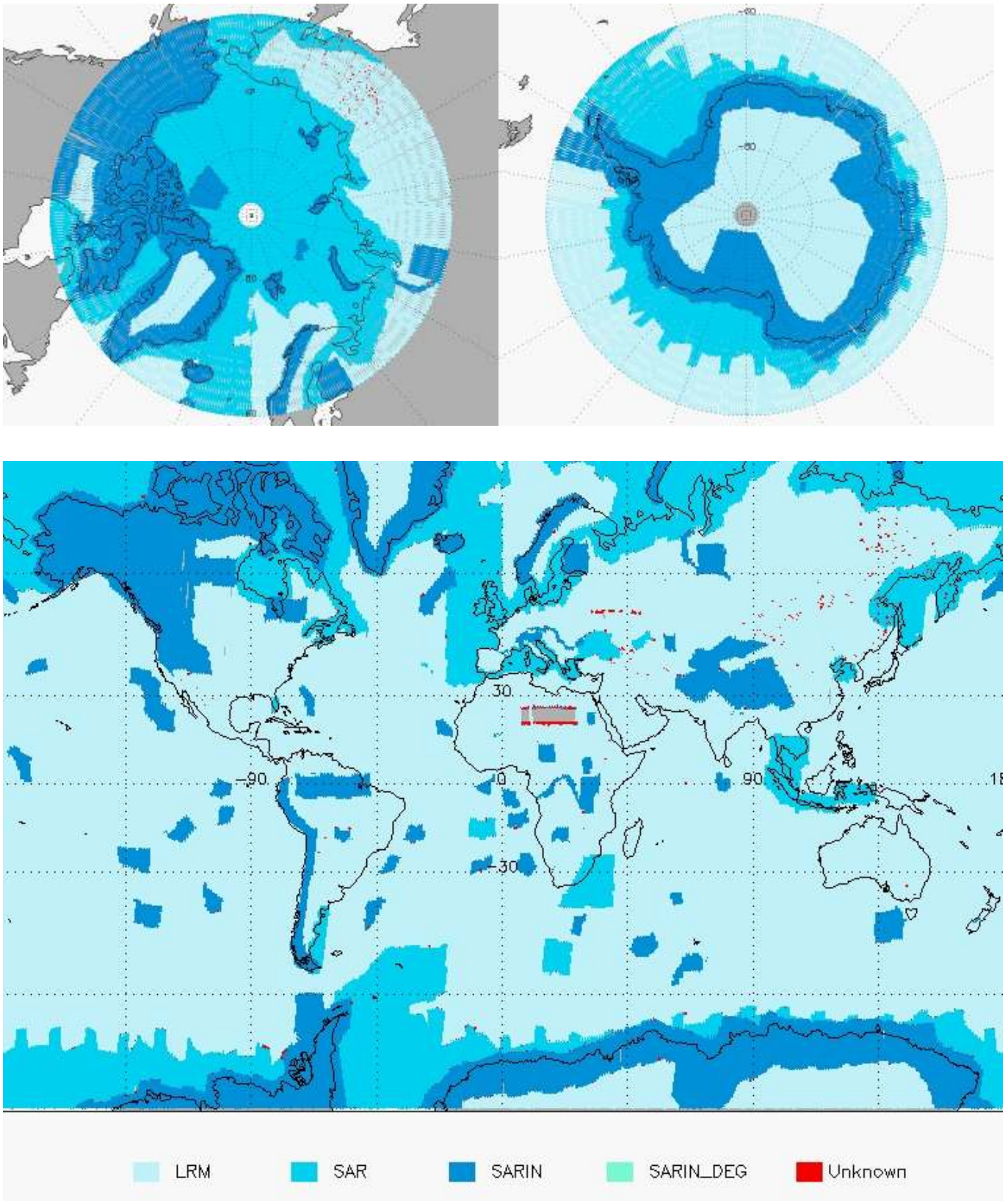


Figure 6-2 Global and Polar plots of SIRAL Modes for cycle 17.



### 6.4.2 SURFACE TYPE

Figure 6-3 shows the surface type for cycle 17 over a global plot. The data is extracted from the Level 2 data products, which includes a surface type flag. The bit values of this flag provide a classification for the different surface type at nadir for the corresponding measurement location.

The classification originates from a model provided by the ESA Geophysical CFI library.

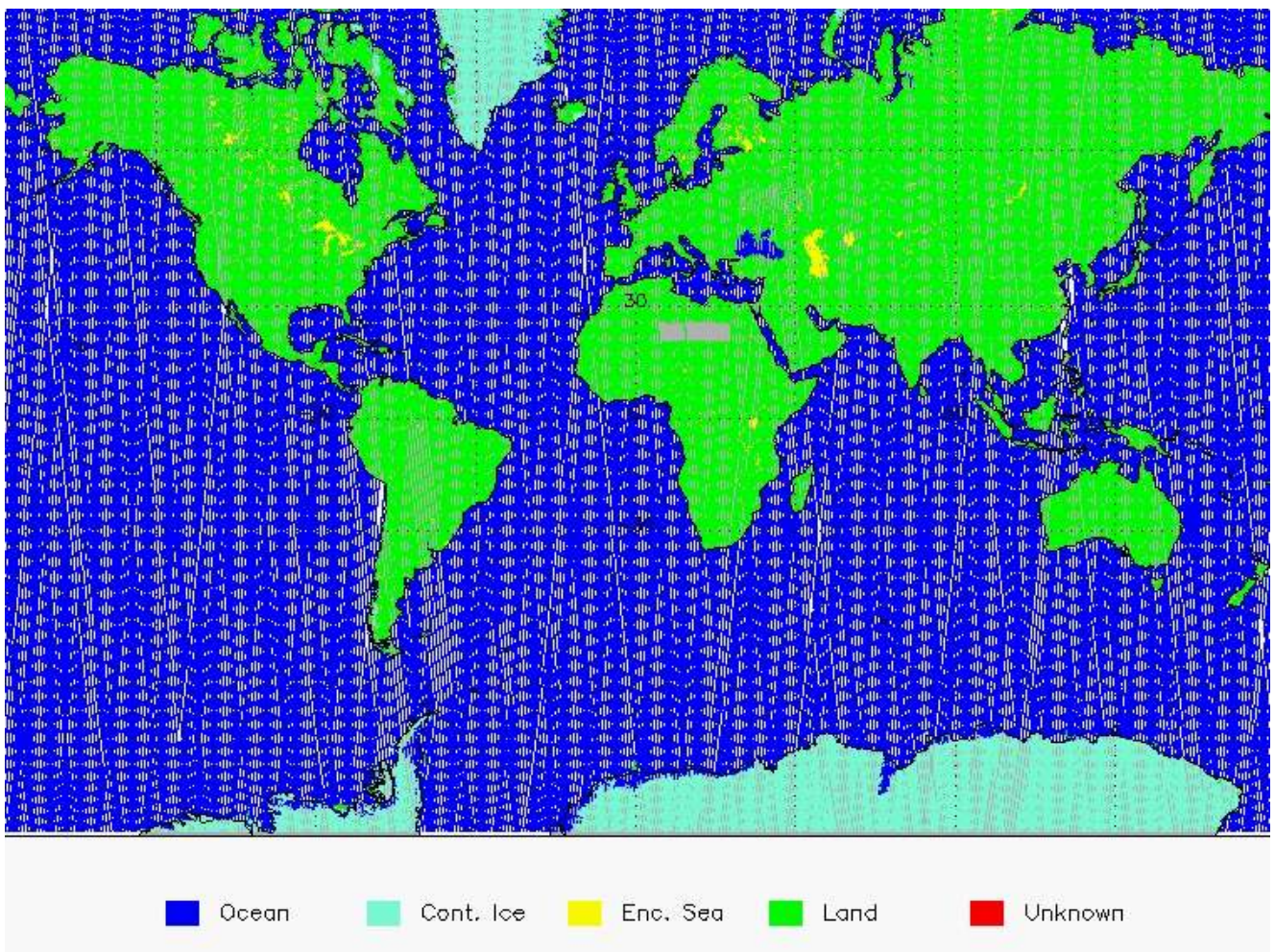


Figure 6-3 Global plot showing the surface type for cycle 17.

| % Open Ocean | % Land | % Continental Ice | % Enclosed Sea | % Unknown |
|--------------|--------|-------------------|----------------|-----------|
| 67.54        | 21.47  | 10.67             | 0.36           | 0.00      |

Table 6-1 Surface Type statistics for cycle 17.

There is currently an Anomaly Report open to investigate occurrences of the ‘Surface Type’ flag incorrectly flagging ocean. This investigation is on-going and is due to be closed with the next IPF update.



### 6.4.3 BACKSCATTER (SIGMA0)

Each 20Hz measurement record includes a radar backscatter ( $\sigma_0$ ) value which provides information about the observed surface. It is a function of the radar frequency, polarisation and incidence angle and the target surface roughness, geometric shape and dielectric properties.

Figure 6-4 shows global and polar plots of this parameter for cycle 17, for all three SIRAL modes. At Level 2, the backscatter coefficient is fully corrected, including instrument gain corrections and bias.

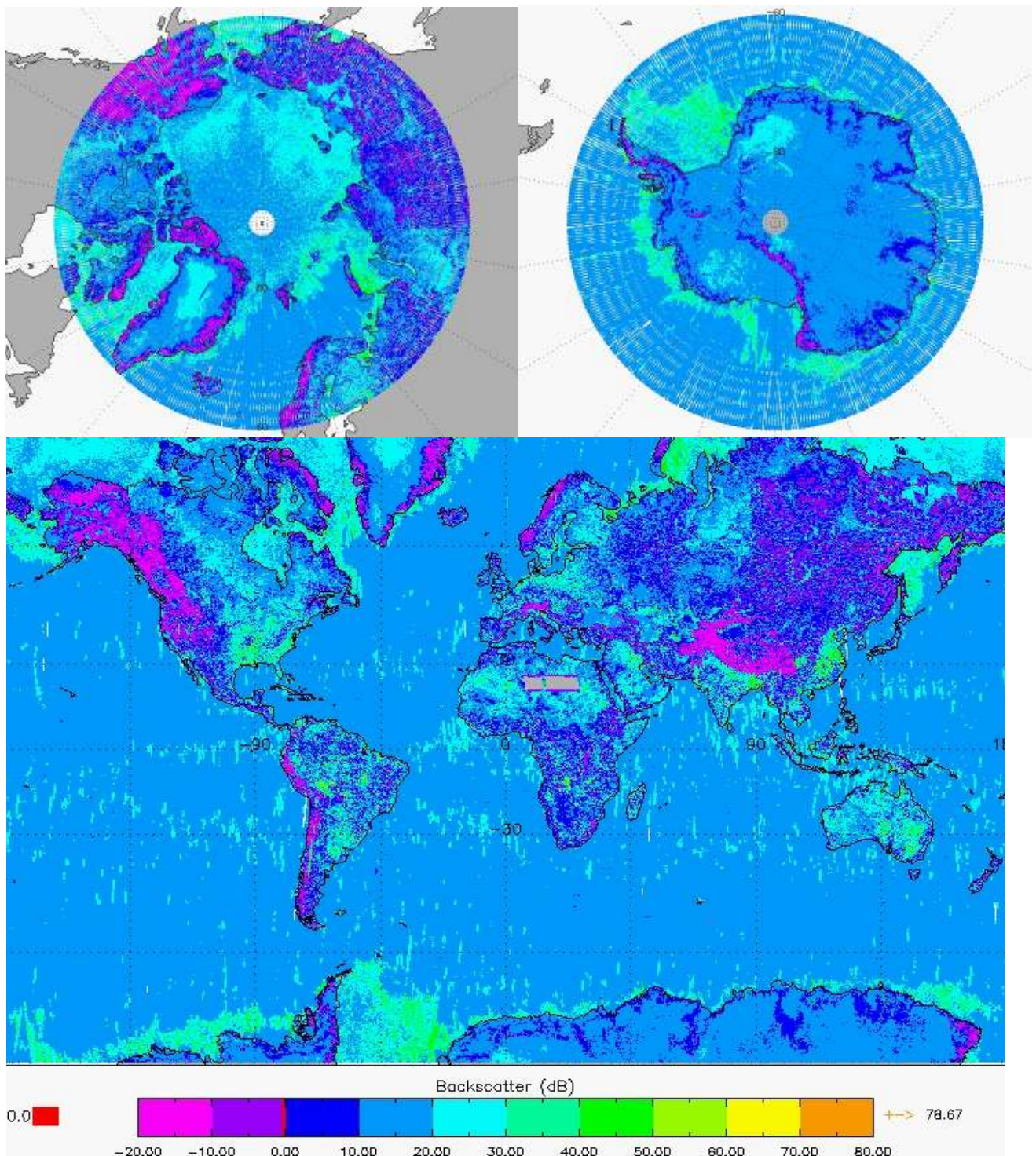
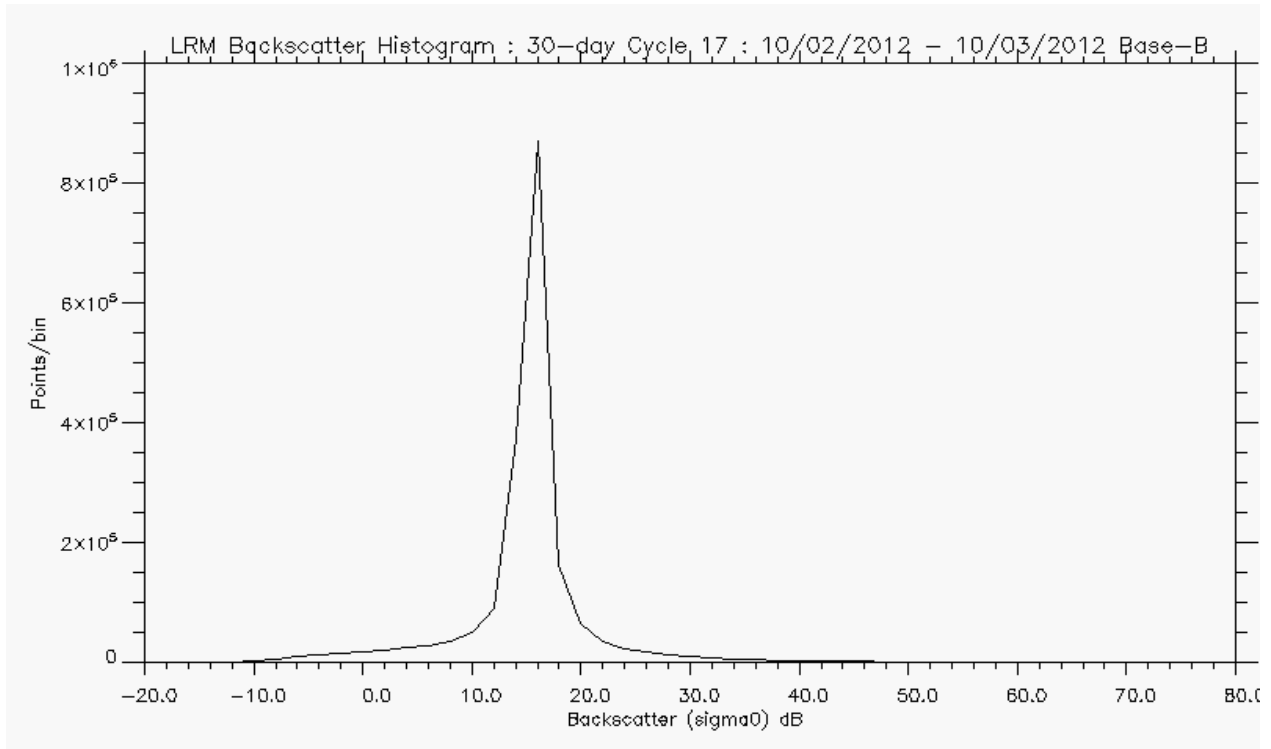
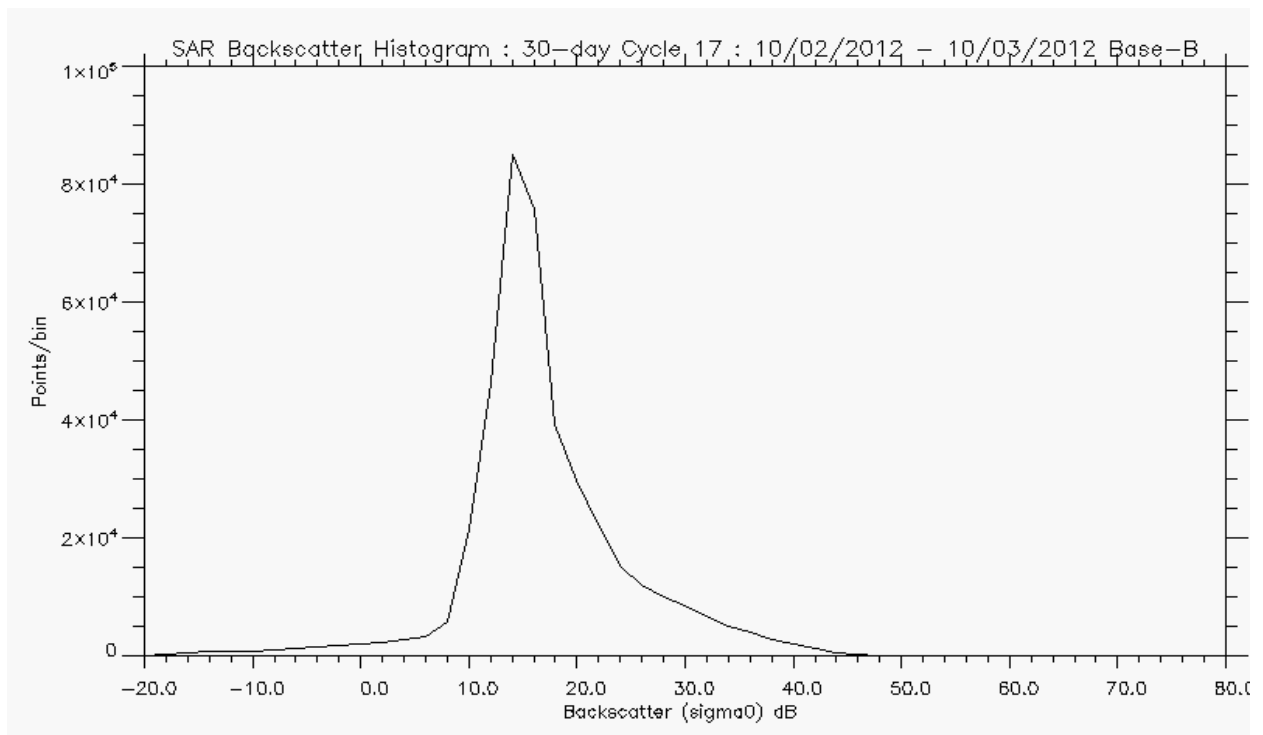


Figure 6-4 Global and Polar plots of Backscatter for cycle 17.

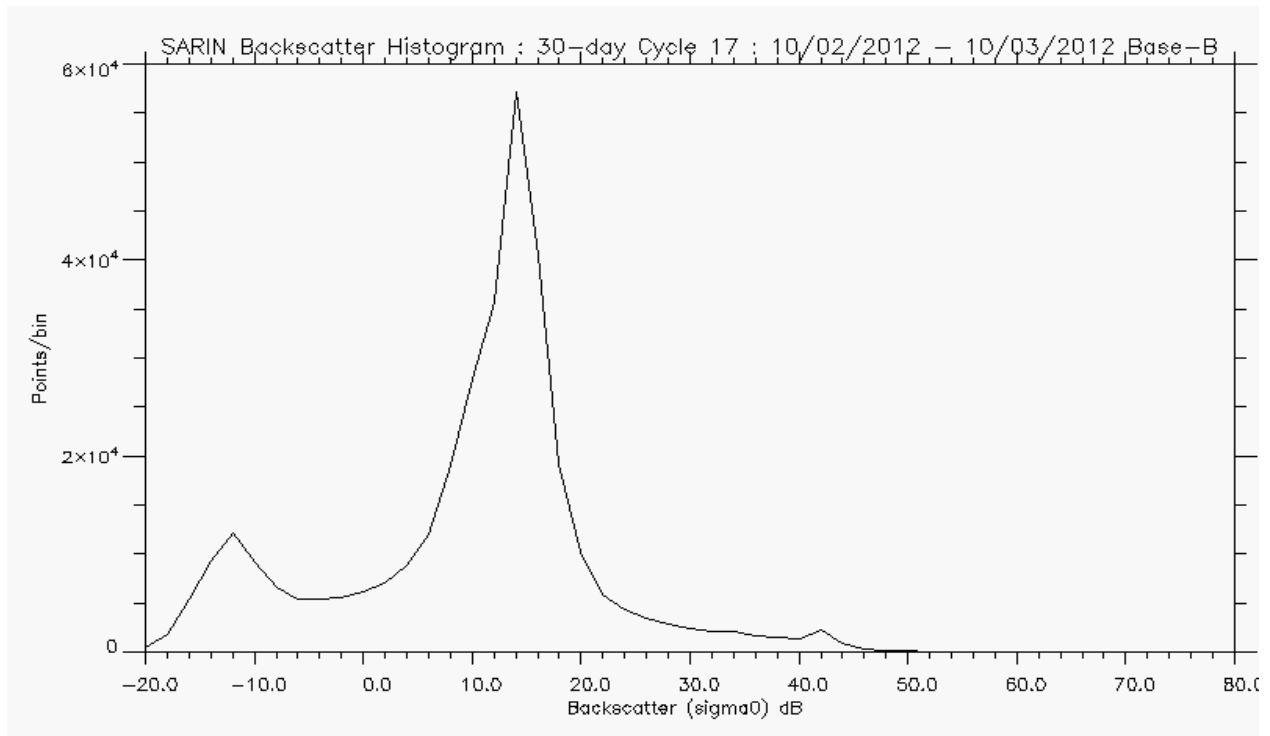
Figure 6-5, Figure 6-6 and Figure 6-7 below provide histograms for the Backscatter ( $\sigma_0$ ) parameter, for each of the SIRAL modes.



**Figure 6-5 Backscatter Histogram for LRM, cycle 17.**



**Figure 6-6 Backscatter Histogram for SAR, cycle 17.**



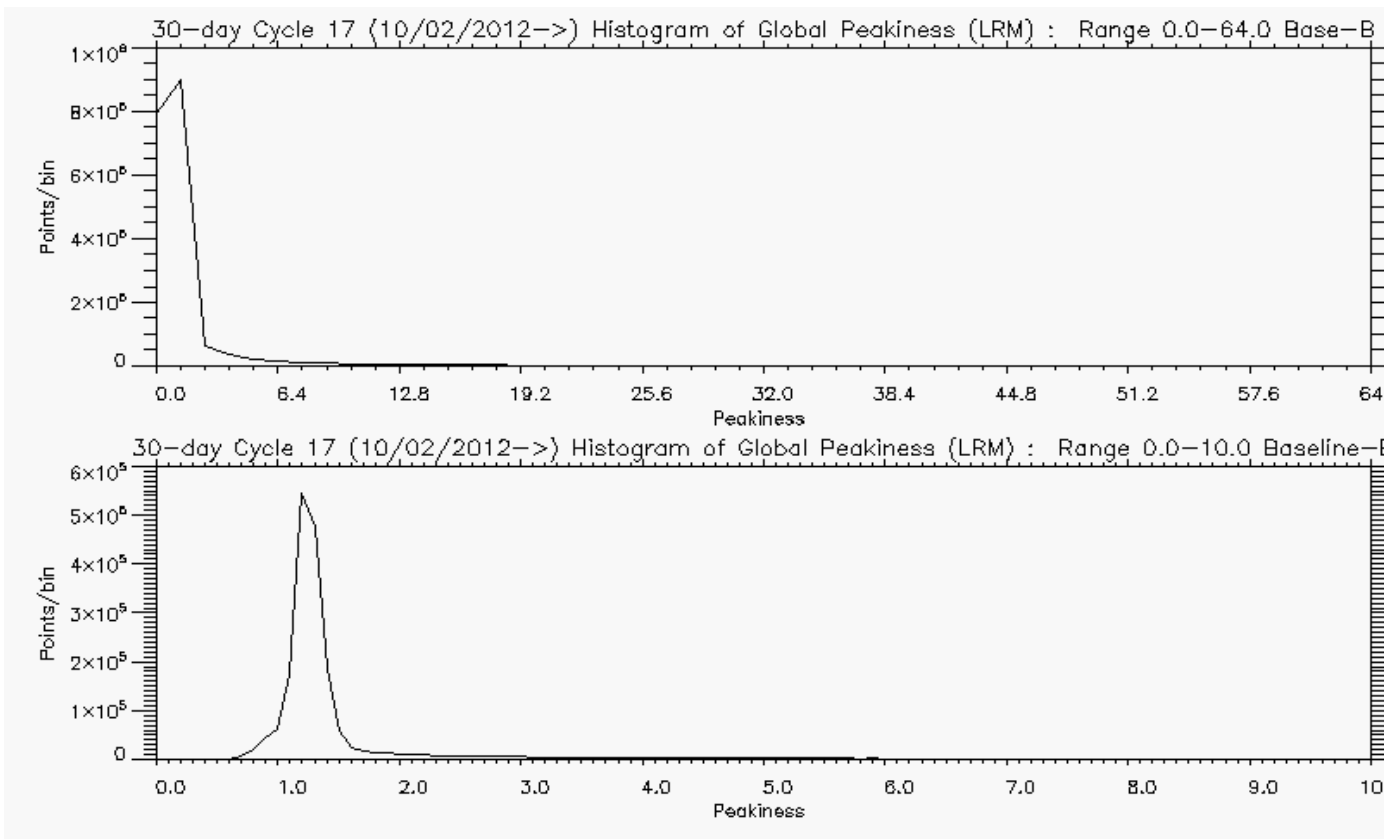
**Figure 6-7 Backscatter Histogram for SARIn, cycle 17.**

It has been noted that in recent months backscatter values have been declining by  $\sim 0.1$  dB per month. The power level transmitted by SIRAL has also been declining by a few 100ths of a dB per month. Nominally the CAL1 mode detects this and provides a correction to the sigma0 values, however there is currently an Anomaly Report open on this issue as this CAL1 correction is currently being applied with the wrong sign, hence the apparent drop in power. This problem is currently under investigation but CryoSat data users should be aware as this can in turn affect wind speed and sea state bias correction values.

#### 6.4.4 WAVEFORM PEAKINESS

CryoSat Level 2 data includes a Waveform Peakiness value (field 39) for each 20Hz measurement record. Peakiness is a ratio of the maximum waveform sample (bin) value to the mean value of the bins to the right of the tracking point. It is used to discriminate specular returns from diffuse returns and is used to estimate sea ice thickness.

Figure 6-8, Figure 6-9 and Figure 6-10 below provide global Peakiness histograms for each of the SIRAL modes.



**Figure 6-8 Histogram of global Peakiness for LRM, for cycle 17.**

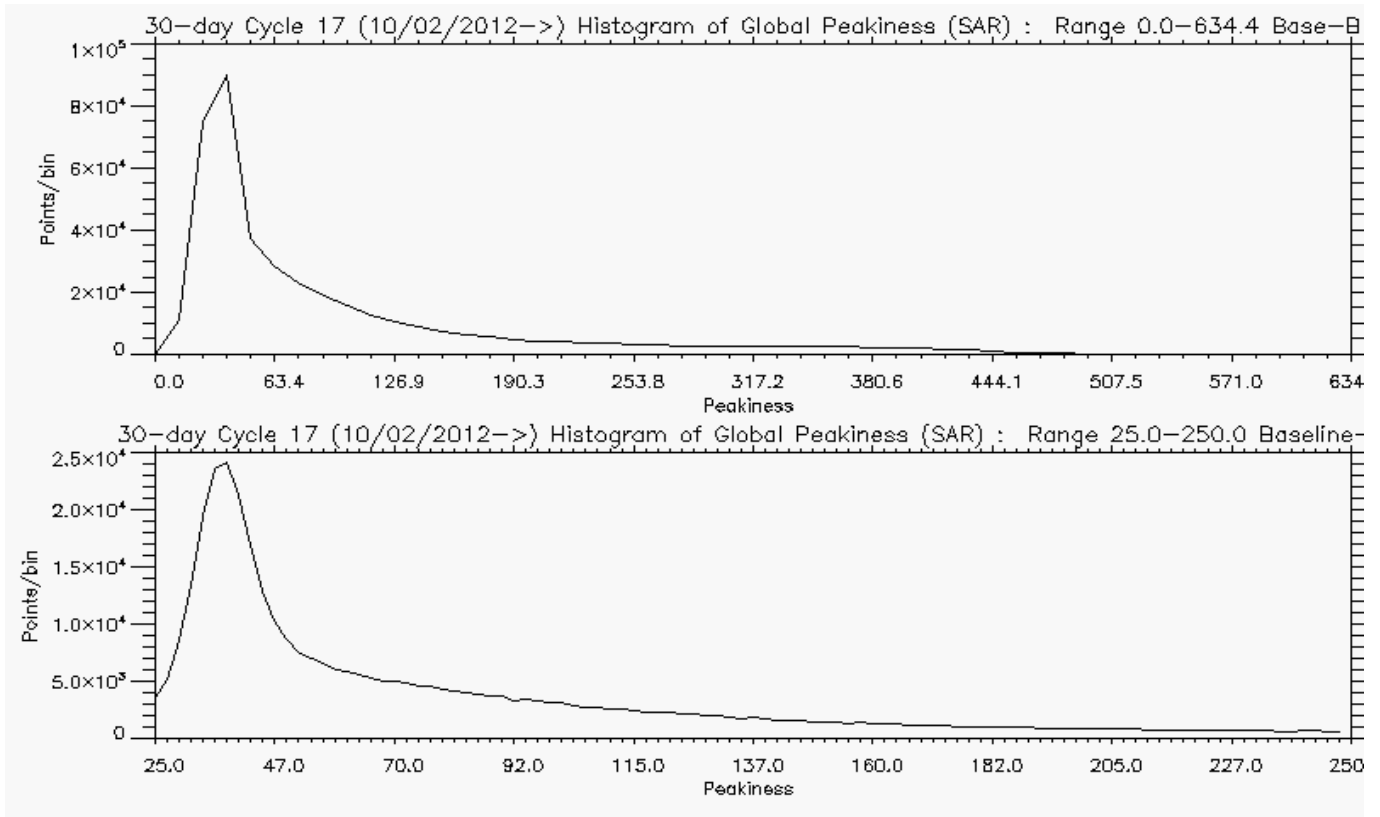


Figure 6-9 Histogram of global Peakiness for SAR, for cycle 17.

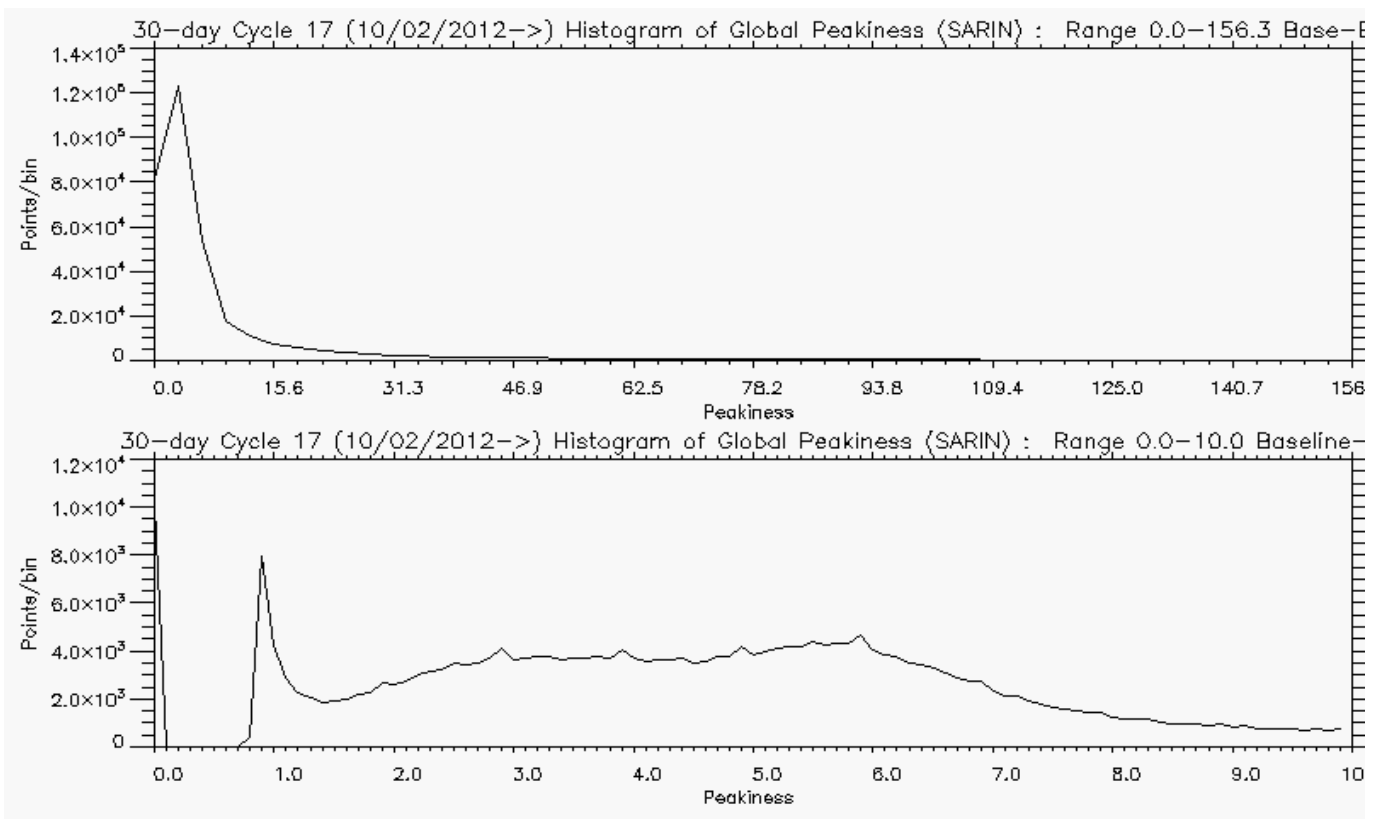


Figure 6-10 Histogram of global Peakiness for SARIn, for cycle 17.



Figure 6-11 shows the Waveform Peakiness for cycle 17, plotted over global and polar plots.

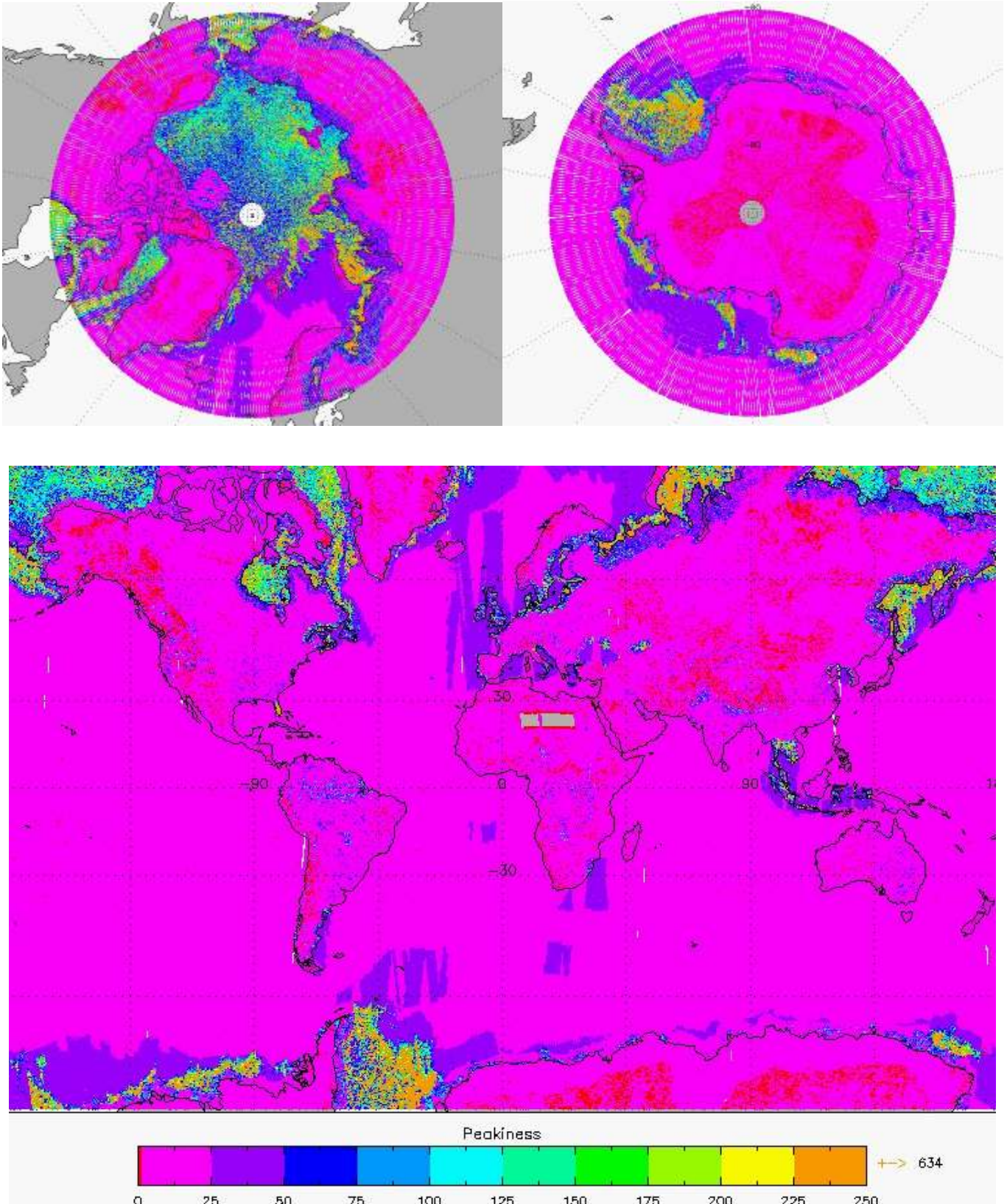


Figure 6-11 Global and polar plots showing Waveform Peakiness for cycle 17.



### 6.4.5 FREEBOARD

CryoSat Level 2 data also includes a calculation for the Sea Ice Freeboard, which is the height by which an ice floe extends above the mean sea surface. This value can possibly be negative if there is heavy snow load on thin ice. At Level 2 it is calculated using UCL04 model values for snow depth and density.

Presently, the freeboard values are not computed and a default value of -9999 is provided in the products by specification. The freeboard will be computed in the Level 2 products when there is a greater confidence in the knowledge of the Arctic Mean Sea Surface with the launch of the SIR\_SAR\_2B and SIR\_GDR\_2B products.

### 6.4.6 SNOW DEPTH

CryoSat Level 2 data includes a snow depth field (field 24) for each 1Hz record. The snow depth values (in mm) are extracted from a climatology model, UCL04, and can be used to adjust the freeboard estimate to account for snow-loading. Currently Level 2 products only include snow depth values for the Arctic Region as a climate model for the Antarctic Region is not available.

Figure 6-12 shows a plot of the Snow Depth values, for the Arctic region, extracted from Level 2 products from cycle 17.

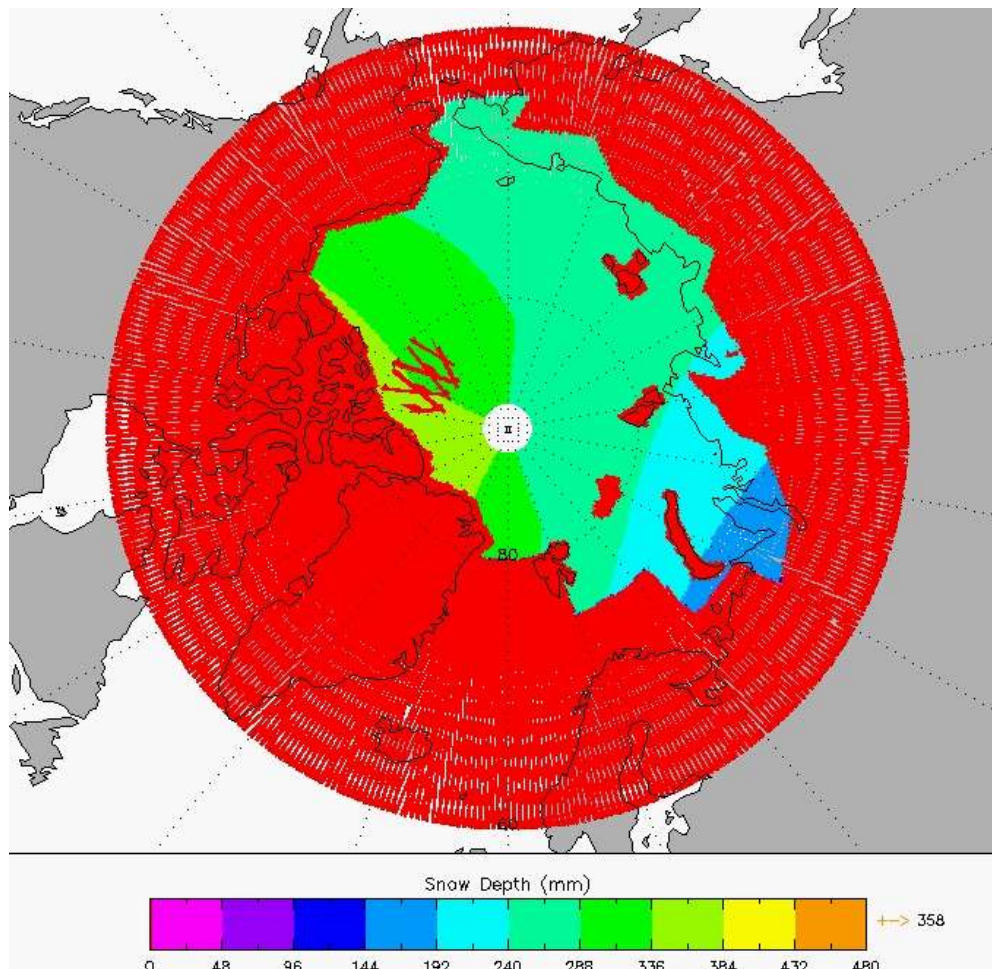
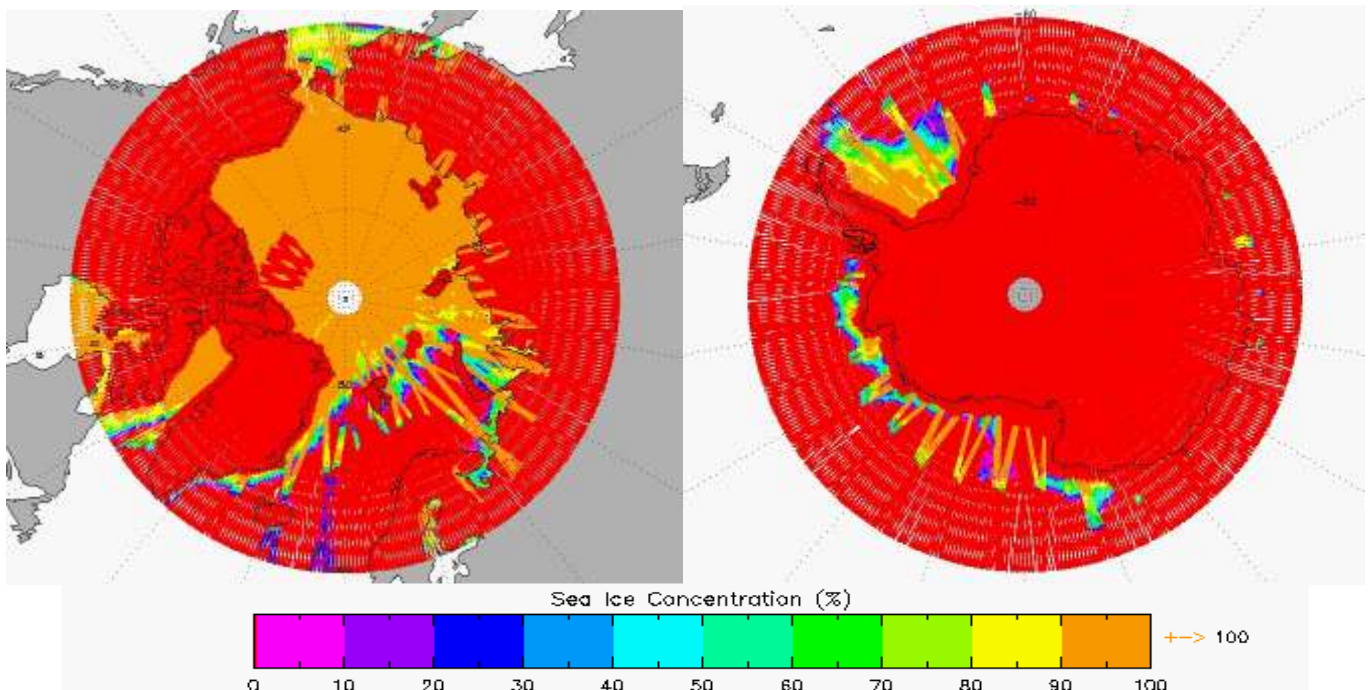


Figure 6-12 Snow Depth (mm) for cycle 17.

### 6.4.7 SEA ICE CONCENTRATION

CryoSat Level 2 data includes a percentage value for the sea ice concentration field (field 23) for each 1Hz record.

Figure 6-13 shows the Sea Ice Concentration values extracted from the Level 2 products from cycle 17.



**Figure 6-13 Sea Ice Concentration (%) for cycle 17.**

### 6.4.8 SNOW DENSITY

CryoSat Level 2 data also includes a snow density field (field 25) for each 1Hz record. The snow density value is a constant value which is extracted by the processor from a Parameter Configuration File (PCONF) and this value can be used to adjust the freeboard estimate to account for snow-loading.

The current snow density value used in the CryoSat Level 2 products is  $400 \text{ kg/m}^3$ .

### 6.4.9 SURFACE HEIGHT

CryoSat Level 2 data provides the calculated Surface Height (Level 2 field 34) w.r.t. the ellipsoid WGS84 for each 20Hz measurement record. Figure 6-14 shows polar plots of the Surface Height values extracted from the Level 2 products, over land and ocean areas, for cycle 17.

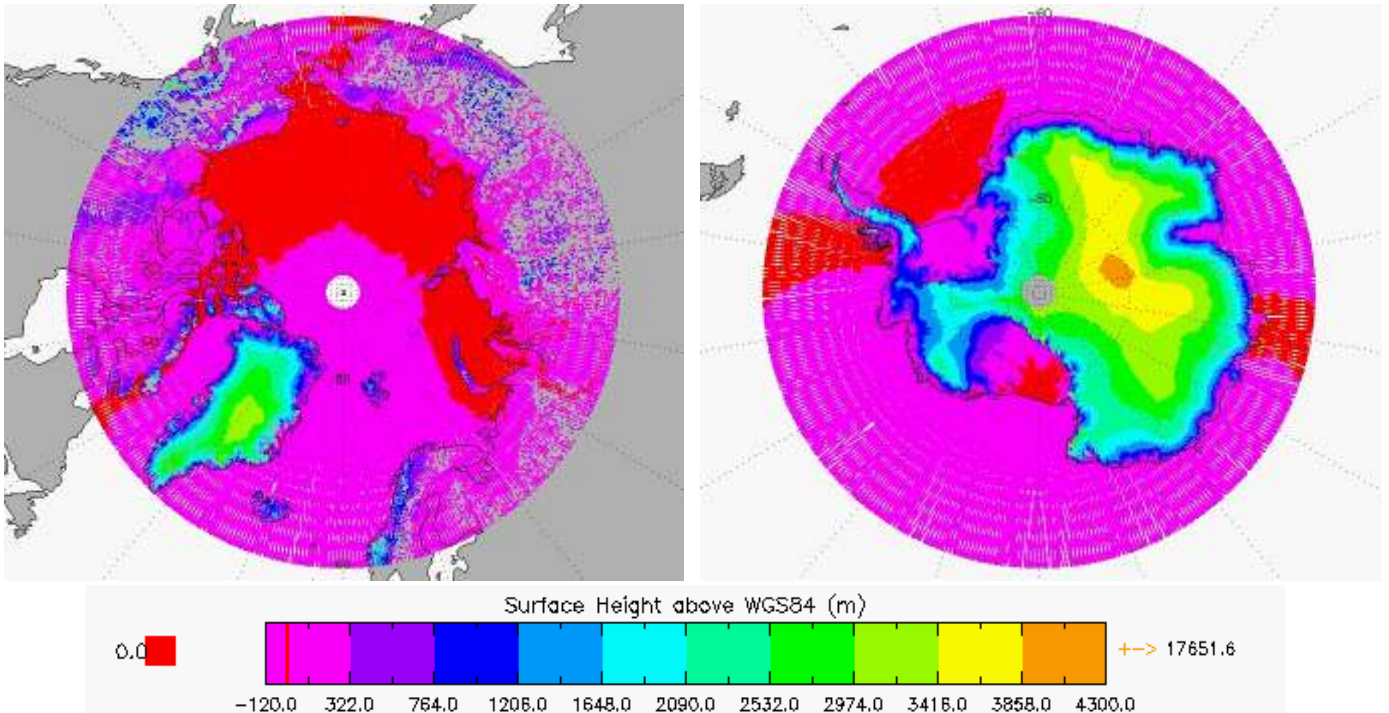


Figure 6-14 Polar plots showing the Surface Height over land and ocean areas for cycle 17.

Figure 6-15 shows a global plot of the Sea Surface Height values extracted from the Level 2 products over ocean areas for cycle 17.

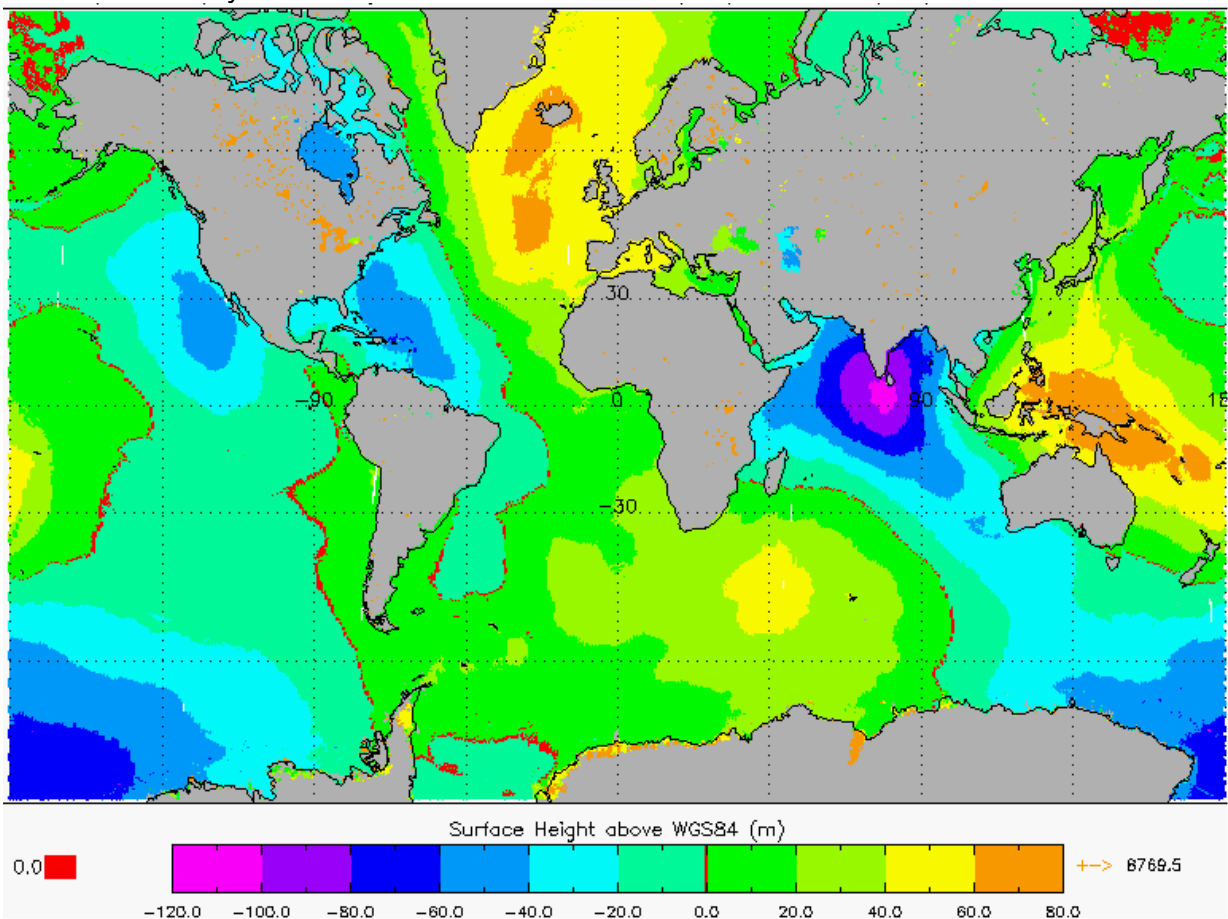


Figure 6-15 Global plot showing the Sea Surface Height over ocean areas only, for cycle 17.



## 6.5 Quality Flags

The CryoSat Level 2 data products include a Quality Flag word (field 43) for each 20Hz measurement record. The bit values of this flag indicate an assessment of the measurement quality by the PDS processing chains.

Table 6-2 provides the statistics for each Quality Flag, from Field 43, for each mode during cycle 17. The results are provided for each mode and surface type. For SARIn mode the Quality Flag results are provided for Ice and Land. Although SARIn mode is predominantly used over steeply sloping ice-sheet margins, small ice caps and areas of mountain glaciers, there are also additional areas where this mode is also operated over land areas such as over Africa and along the Chilean coast.

| Quality Flag              | LRM – Ice | LRM – Land | LRM – Ocean | SARIn – Ice | SARIn – Land | SAR - Ocean |
|---------------------------|-----------|------------|-------------|-------------|--------------|-------------|
| BLOCK DEGRADED            | 0%        | 0%         | 0%          | 0%          | 0%           | 0%          |
| ORBIT ERROR               | 0%        | 0%         | 0%          | 0%          | 0%           | 0%          |
| ORBIT DISCONTINUITY       | 0%        | 0%         | 0%          | 0%          | 0%           | 0%          |
| HEIGHT ERROR              | 19.36%    | 76.7%      | 0.38%       | 9.52%       | 33.6%        | 0%          |
| SSHA INTERP ERROR         | 0%        | 0%         | 0%          | 0%          | 0%           | 0%          |
| CALIBRATION WARNING       | 0.37%     | 0.25%      | 0.22%       | 0%          | 0%           | 0%          |
| BACKSCATTER ERROR         | 17.73%    | 74.53 %    | 0.37%       | 0%          | 0%           | 0%          |
| FREEBOARD ERROR           | 100%      | 100%       | 100%        | 100%        | 100%         | 100%        |
| PEAKINESS ERROR           | 0%        | 0%         | 0%          | 0%          | 0%           | 0%          |
| SAR DISCRIM = OCEAN       | 0%        | 0%         | 0%          | 0%          | 0%           | 18.37%      |
| SAR DISCRIM = LEAD        | 0%        | 0%         | 0%          | 0%          | 0%           | 7.38%       |
| SAR DISCRIM = SEA ICE     | 0%        | 0%         | 0%          | 0%          | 0%           | 46.88%      |
| SAR DISCRIM= UNKNOWN      | 0%        | 0%         | 0%          | 0%          | 0%           | 27.37%      |
| SARIN XTRACK ERROR        | 0%        | 0%         | 0%          | 70.25%      | 98.75%       | 0%          |
| SARIN RX1 ERROR           | 0%        | 0%         | 0%          | 0%          | 0%           | 0%          |
| SARIN RX2 ERROR           | 0%        | 0%         | 0%          | 0%          | 0%           | 0%          |
| SIRAL IDENTIFIER          | 0%        | 0%         | 0%          | 0%          | 0%           | 0%          |
| SURFACE MODEL UNAVAILABLE | 0%        | 0%         | 0%          | 0%          | 0%           | 0%          |
| MISPOINTING _ERROR        | 0%        | 0%         | 0%          | 0%          | 0%           | 0%          |
| DELTA _TIME _ERROR        | 0%        | 0%         | 0%          | 0%          | 0%           | 0%          |

Table 6-2 Quality Flag Results for cycle 17.

Currently the Quality Flag for 'Freeboard Error' is set in all products as this parameter is currently not provided in the Level 2 products and the value is presently set to the default value of -9999 (please refer to section 6.4.5 for more details).

It has been noted that the number of errors arising from the 'Backscatter Error' and 'Height Error' Quality Flag is much higher than expected over land-ice areas and this is currently part of an on-going investigation by expert teams.

The SARIn Xtrack Error flag is used to indicate records flagged as ambiguous. In Level 2I SARIn products, an Ambiguity Flag (field 73) is used to indicate ambiguity and is also used to indicate why the record has been flagged as ambiguous. Within the corresponding Level 2 SARIn products, there is only one bit available within the record structure to show this, so it is currently set if the difference between the computed surface elevation and the DEM is > 50m or if there isn't a DEM at the current location to check.

As the DEM is only available for Greenland and Antarctica, the SARIn Xtrack flag can be ignored in all other regions. Currently there is an on-going investigation into the high number of errors from the 'SARIn X-track Error' Quality Flag over Antarctica.

## 6.6 Crossover Analysis

This section provides results from crossover processing of Level 2 data from cycle 17.

### 6.6.1 CROSSOVER STATISTICS

The crossover statistics for cycle 17, from each mode, is provided in Table 6-3 for Antarctica, Greenland and the Global Oceans.

| Location      | Mode  | No of xovers          | RMS           | Mean    | XTT Mean |
|---------------|-------|-----------------------|---------------|---------|----------|
| Antarctica    | LRM   | 36112 (91.4%) < 10.0m | <b>0.41 m</b> | -0.03 m | 4.53 ms  |
|               | SARIn | 11328 (87.6%) < 10.0m | <b>1.90 m</b> | 0.03 m  | -0.72 ms |
| Greenland     | LRM   | 343 (92.7%) < 1.0m    | <b>0.41 m</b> | 0.19 m  | 6.36 ms  |
|               | SARIn | 2478 (84.2%) < 1.0m   | <b>1.86 m</b> | 0.07 m  | 1.14 ms  |
| Global Oceans | LRM   | 10141 (99.5%) < 1.0m  | <b>0.24 m</b> | -0.16 m | 4.53 ms  |

Table 6-3 Cycle 17 Crossover Statistics.

### 6.6.2 ELEVATION MAPS

Figure 6-16 and Figure 6-17 show spatial polar maps of elevation differences at crossover per 10 km<sup>2</sup> grid cells for Level 2 products from cycle 17.

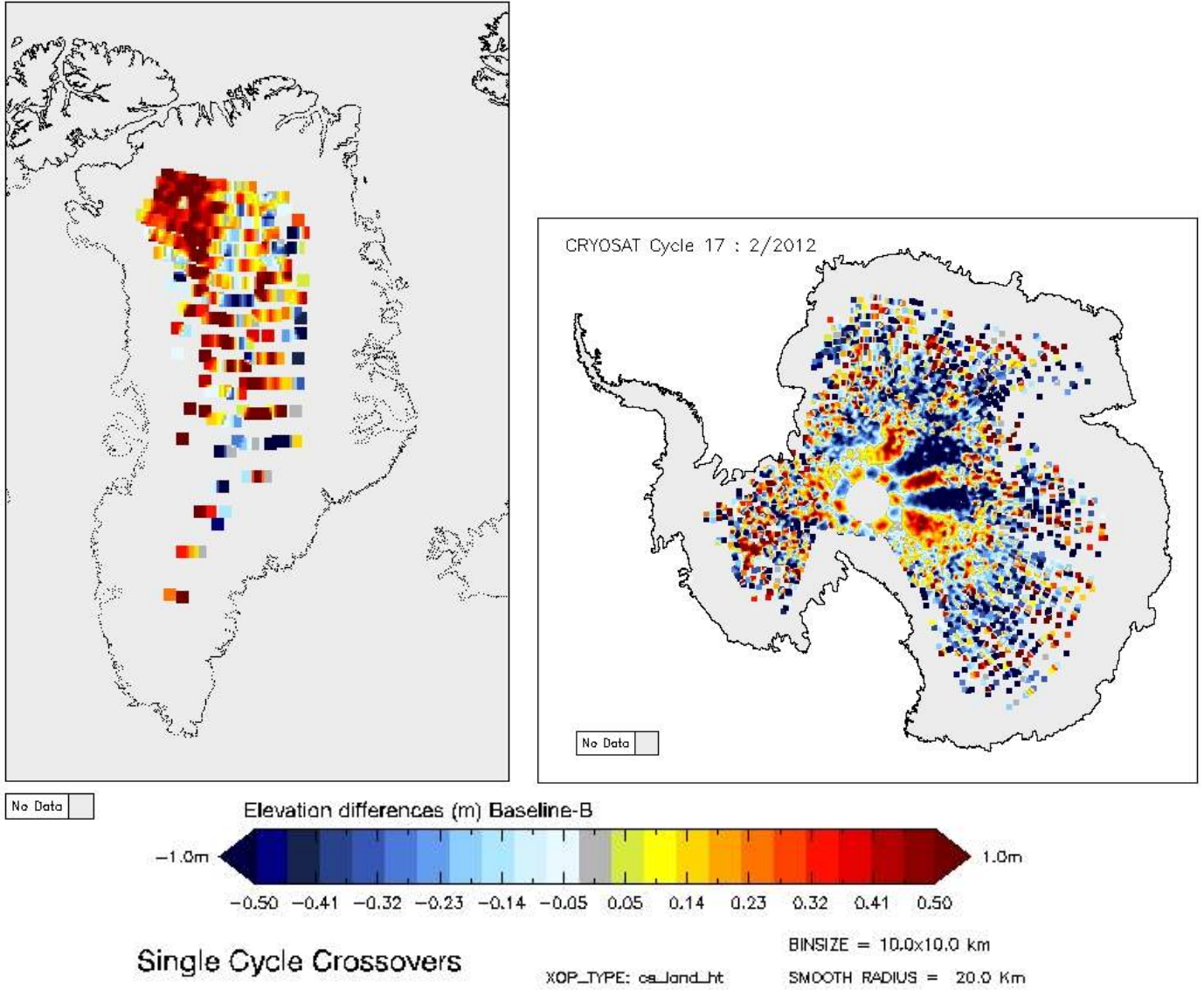


Figure 6-16 Polar maps of LRM elevation difference for cycle 17.

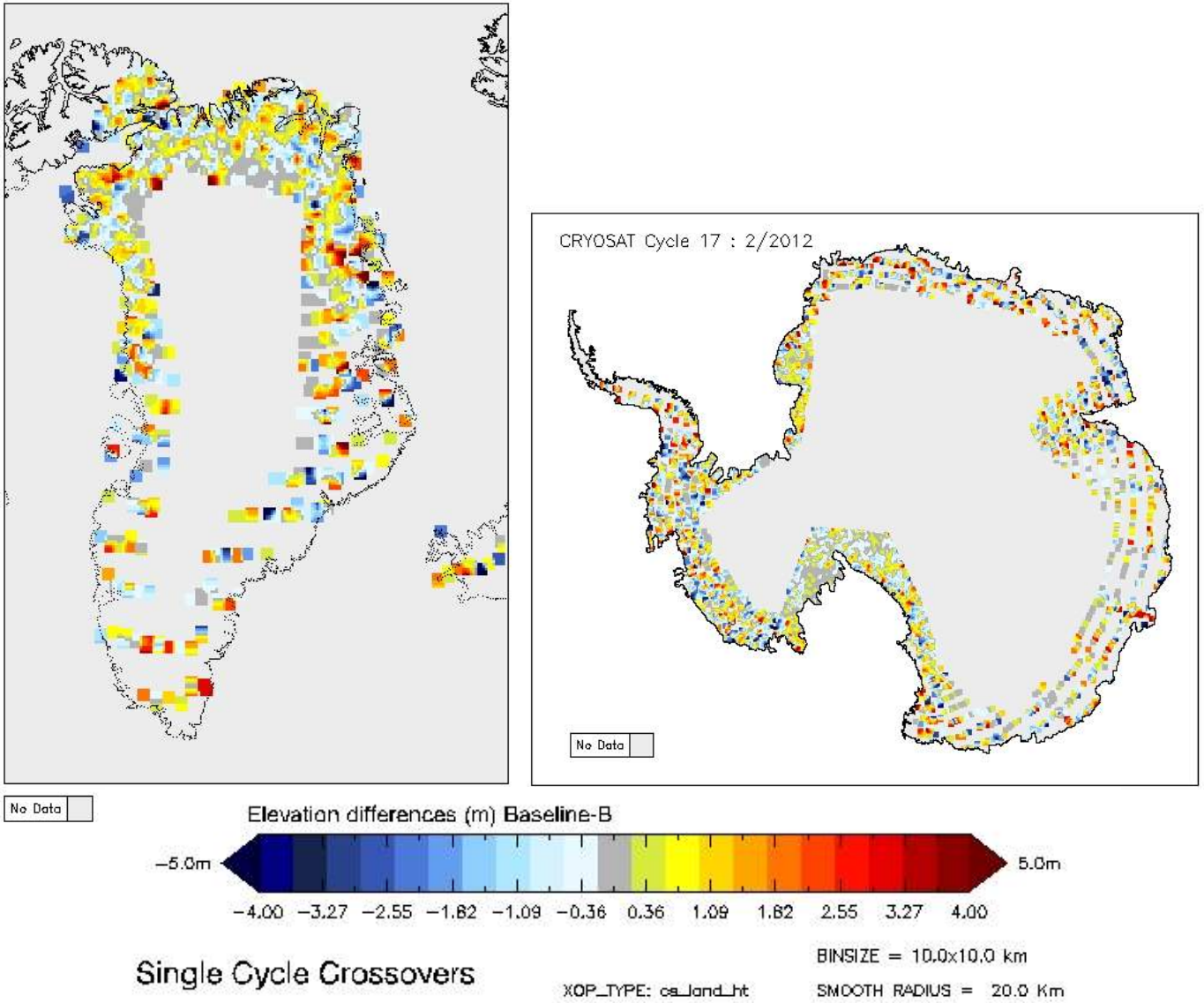


Figure 6-17 Polar maps of SARIn elevation difference for cycle 17.

### 6.6.3 BACKSCATTER (SIGMA0) MAPS

Figure 6-18 and Figure 6-19 provide spatial polar maps of power differences at crossover per 10 km<sup>2</sup> grid cells for Level 2 products from cycle 17.

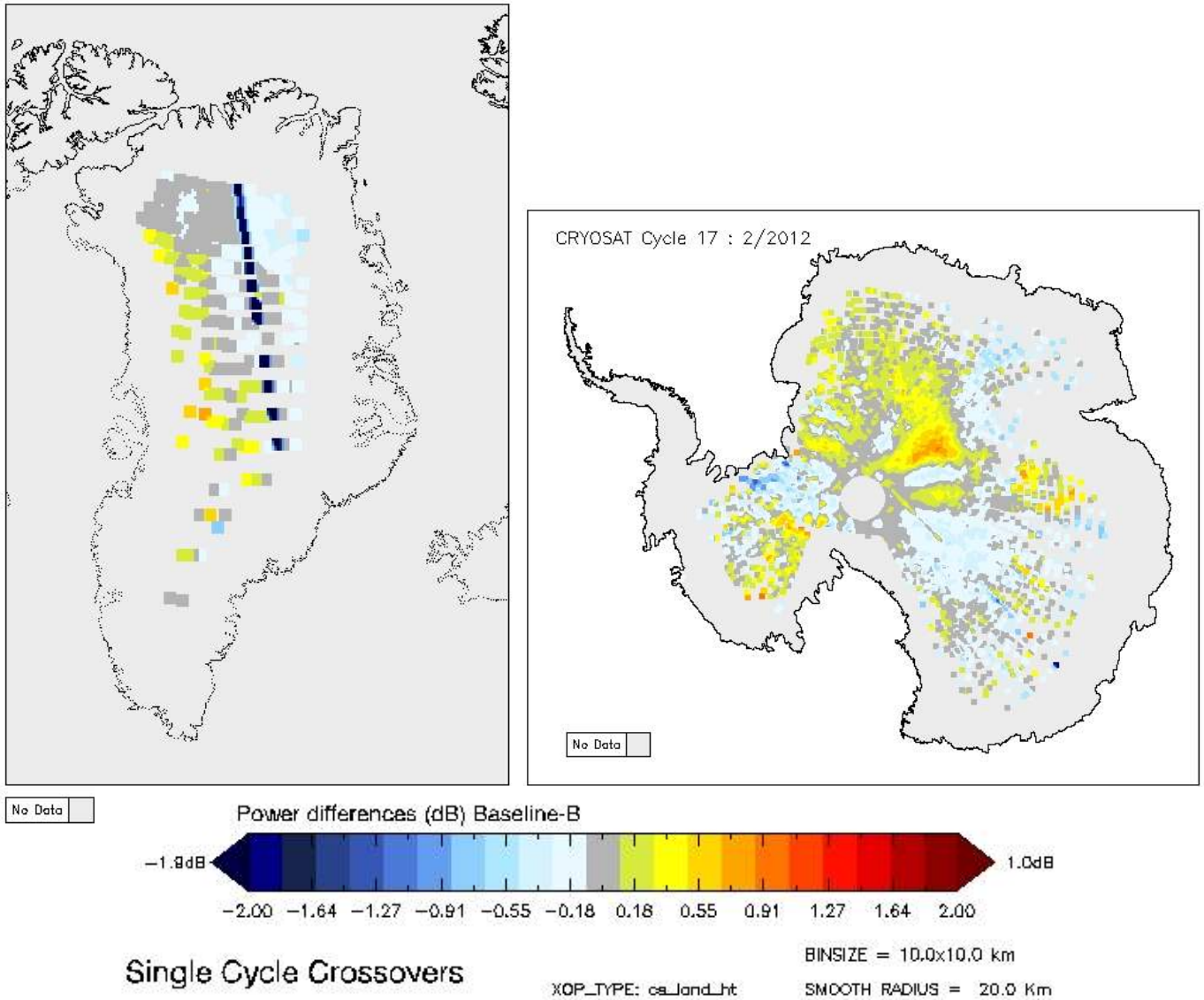


Figure 6-18 Polar maps of LRM power differences for cycle 17.



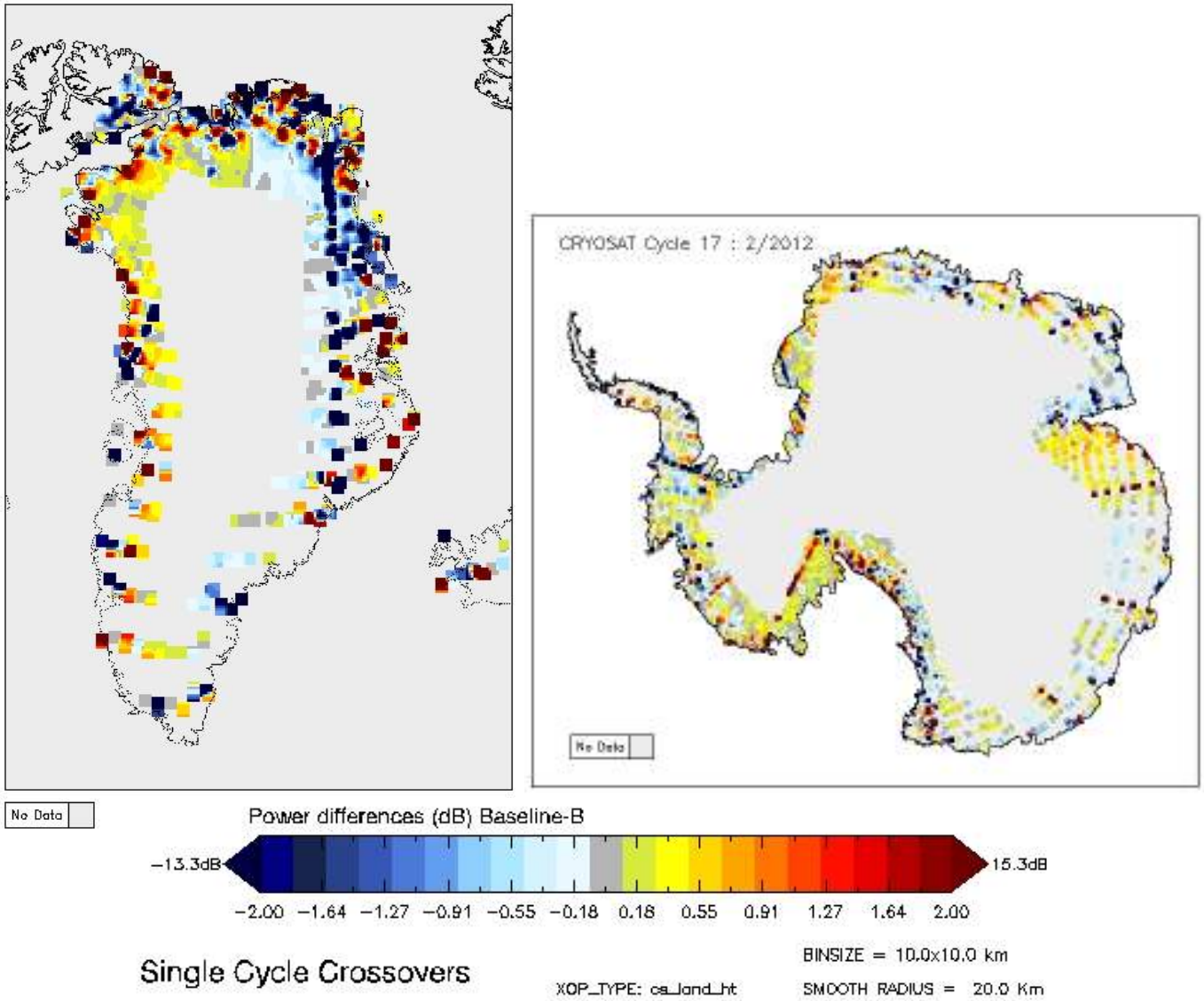


Figure 6-19 Polar maps of SARIn power differences for cycle 17.





### 6.7.2 WET TROPOSPHERIC CORRECTION

The wet troposphere correction is the correction for the path delay in the radar return signal due to liquid water in the atmosphere. It is calculated from radiometer measurements and meteorological models and has a typical range from 0 to 50 cm.

Unlike the Dry Tropospheric Correction, the Wet Tropospheric Correction is retrieved directly from ECMWF analysed grids. These correction files are then simply formatted to the CryoSat PDS file standard before being directly used in the processor.

Figure 6-21 shows, geographically, the value of the Wet Tropospheric Correction, applied to the Level 2 data. The global RMS value of this correction for Cycle 17 is **148 mm**.

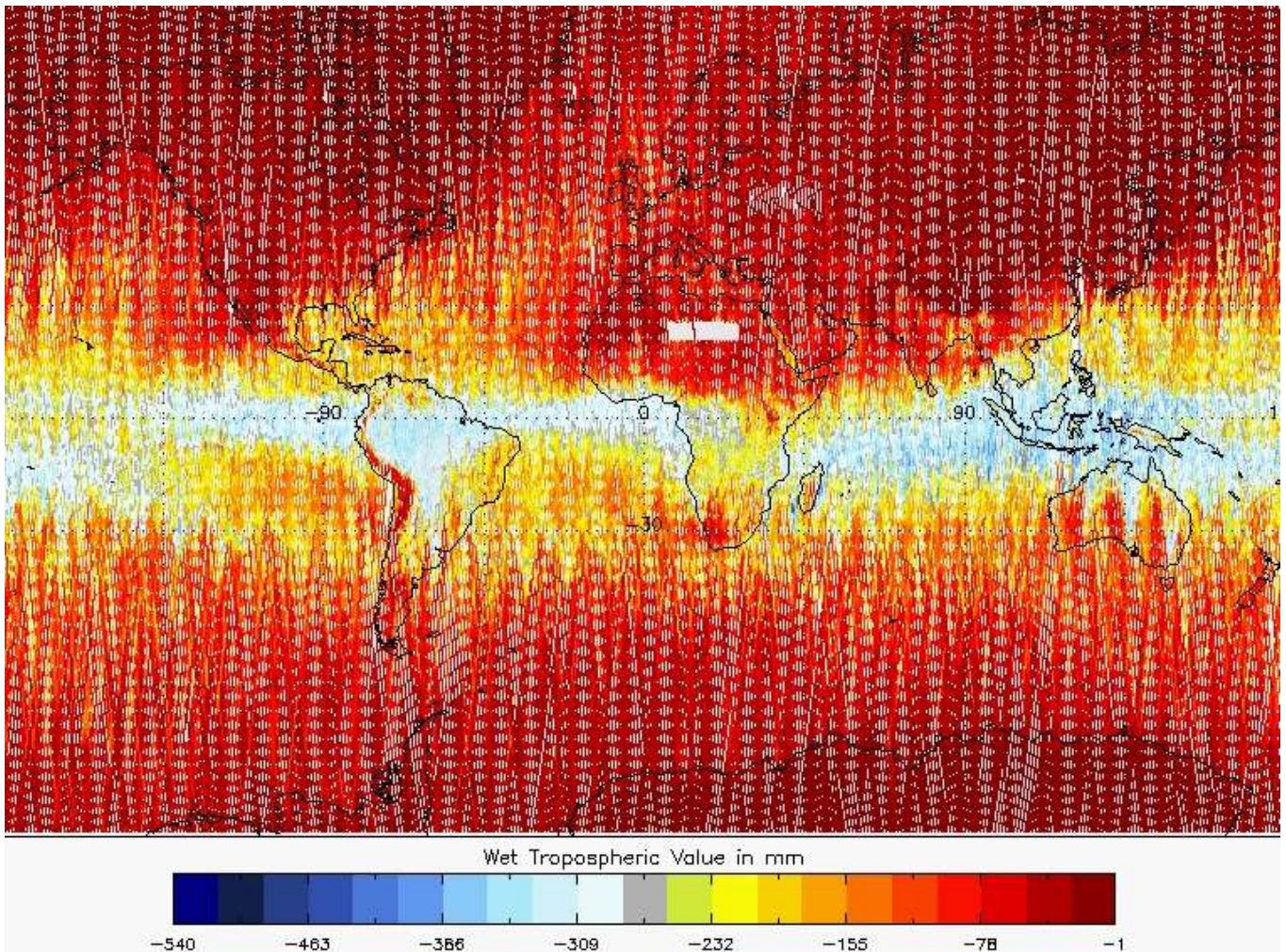


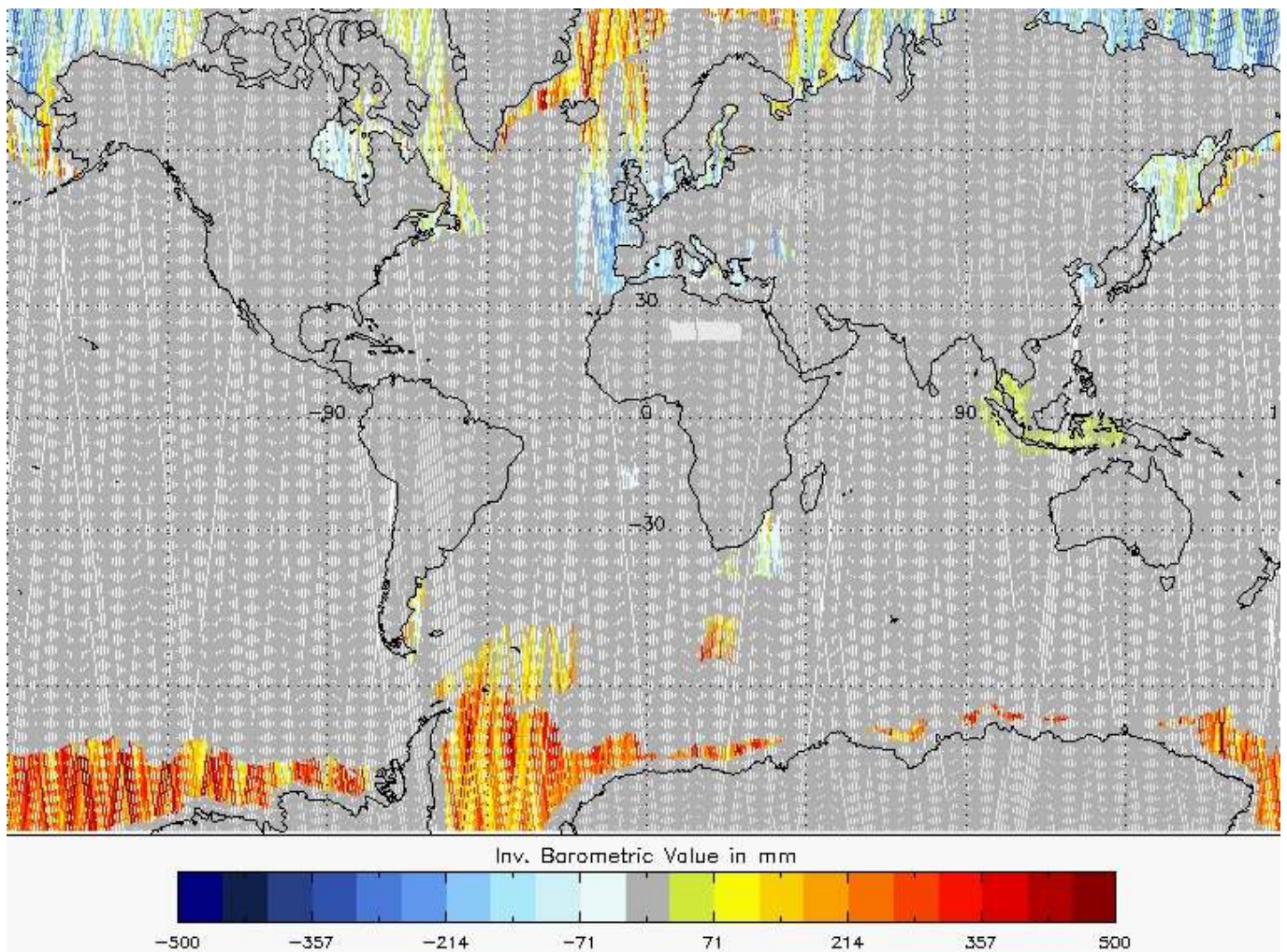
Figure 6-21 Global plot for Wet Tropospheric Correction for cycle 17.



### 6.7.3 INVERSE BAROMETRIC CORRECTION

The Inverse Barometric Correction compensates for variations in sea surface height due to atmospheric pressure variations, which is known as atmospheric loading. It has a typical range from -15 to +15 cm, and is calculated from data provided by Meteo France via the CNES SSALTO system. This correction is only used over sea ice, in SAR mode, and when the surface type is 'open ocean'.

Figure 6-22 shows, geographically, the value of the Inverse Barometric Correction applied to the Level 2 data. The global RMS value of this correction for cycle 17 is **156 mm**.



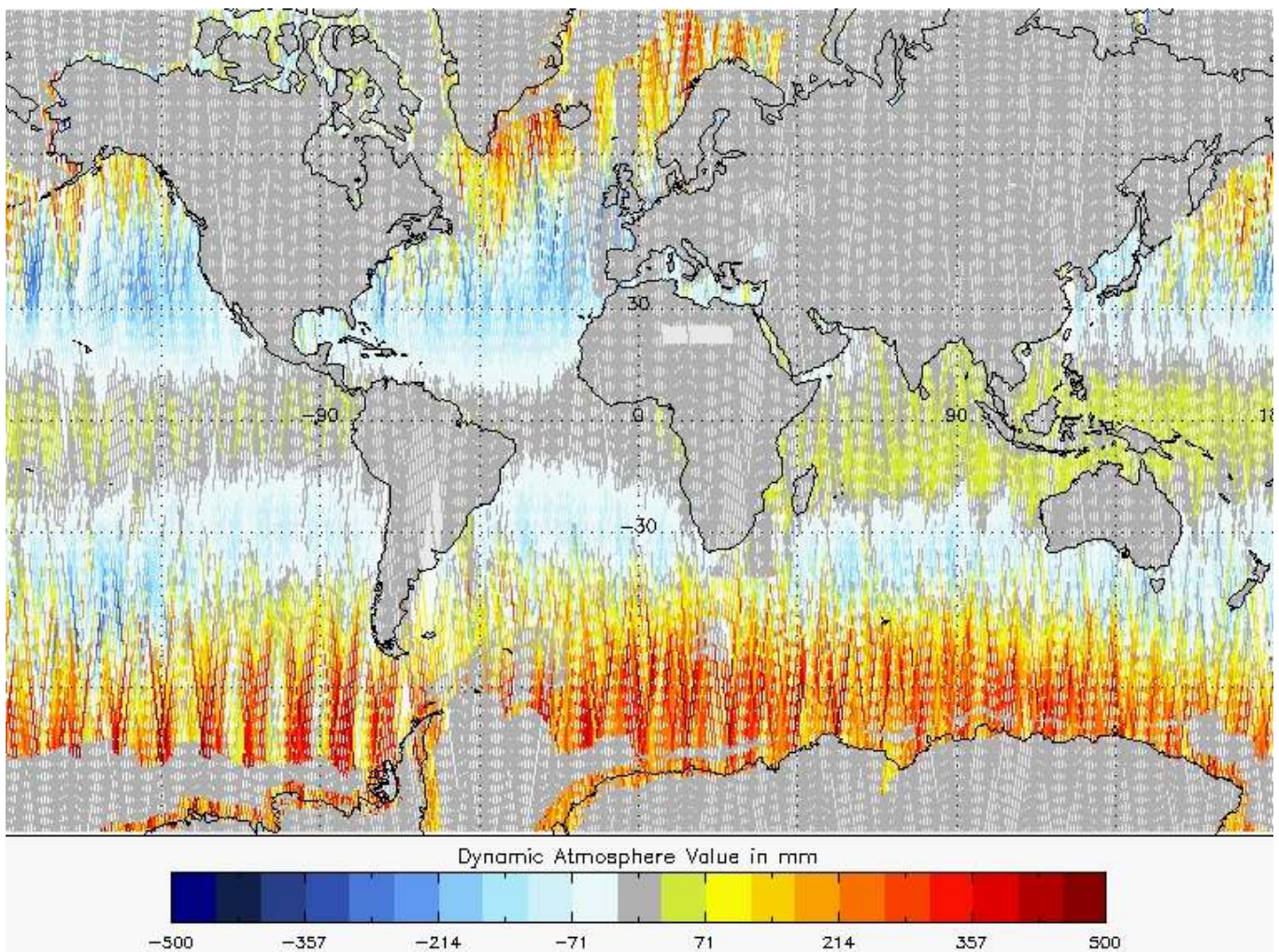
**Figure 6-22 Global plot for Inverse Barometric Correction for cycle 17.**



#### 6.7.4 DYNAMIC ATMOSPHERE CORRECTION

The dynamic atmospheric correction compensates for variations in sea surface height due to atmospheric pressure and winds. It has a typical range from -15 to +15 cm and is taken from the MOG2D model data provided by Meteo France via the CNES SSALTO system. This correction is only used over ocean, without sea-ice cover, in SARIn and LRM mode, when the surface type is 'open ocean'.

Figure 6-23 shows, geographically, the value of the Dynamic Atmospheric Correction, computed and applied to the Level 2 data. The global RMS value of this correction for cycle 17 is **124 mm**.



**Figure 6-23 Global plot for Dynamic Atmosphere Correction for cycle 17.**



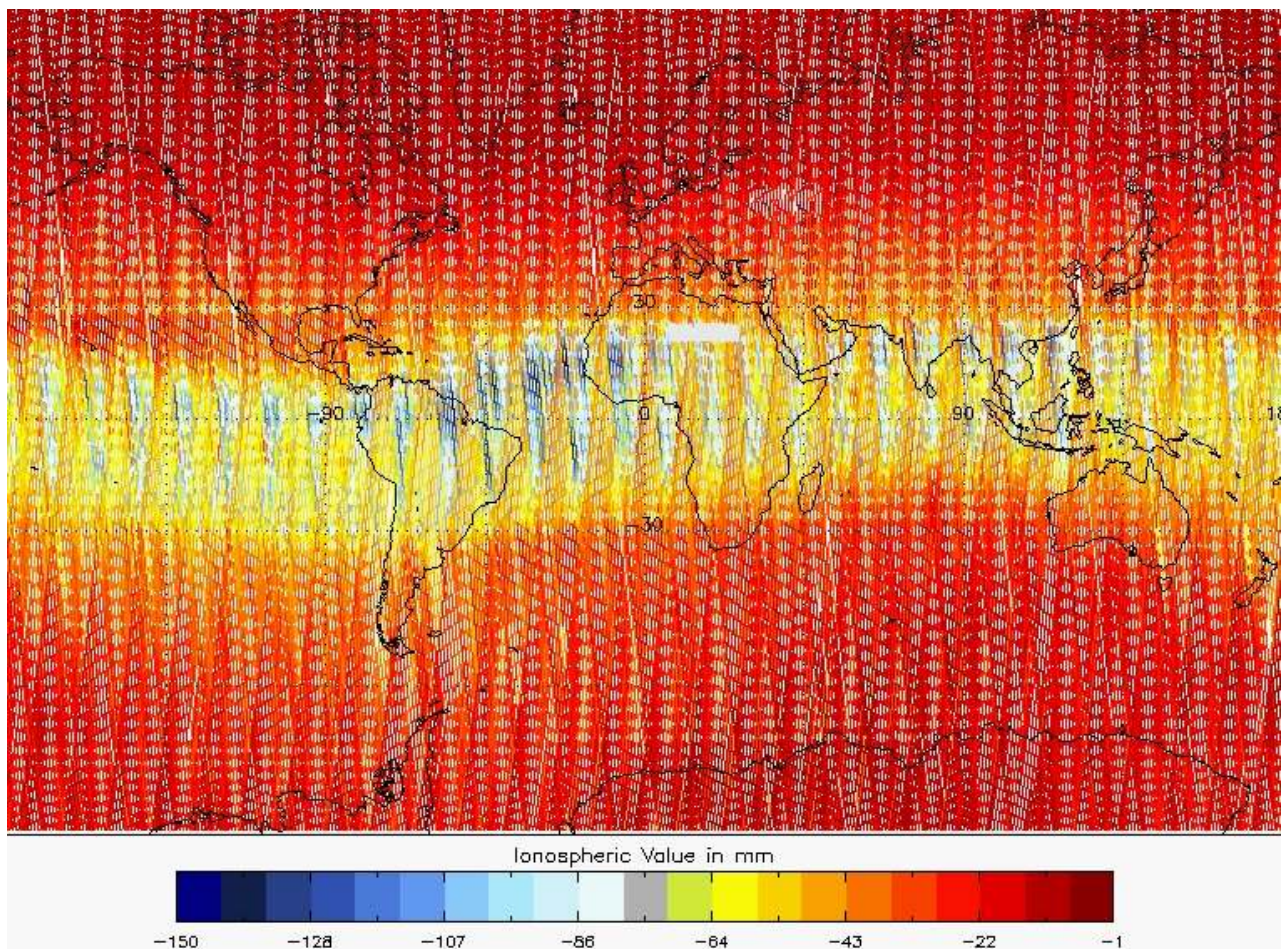
### 6.7.5 IONOSPHERIC CORRECTION

The Ionospheric Correction compensates for the free electrons in the Earth's ionosphere slowing the radar pulse. Solar control of the ionosphere leads to geographic and temporal variations in the free electron content, which can be modelled, or measured, for example using the GPS satellite network.

There are two sources currently used to derive this correction for CryoSat, the Global Ionospheric Map (GIM) and the Bent model. The GIM correction uses GPS measurements and is sourced from CNES via SSALTO as a dynamic daily file. The Bent Model is derived from a static file and is based on knowledge of a solar activity index, such as sunspots.

The correction has a typical range from 0.06 to 0.12 m. CryoSat Level 1B products currently contain the Ionospheric Correction values derived from both the GIM and Bent Model. At Level 2, only the Ionospheric Correction value applied to the range is provided. This is nominally derived using the GIM by default, however when this is unavailable the Bent model is used as an alternative.

Figure 6-24 shows, geographically, the value of the Ionospheric Correction applied to the Level 2 data. The global RMS value of this correction for cycle 17 is **161 mm**.



**Figure 6-24 Global plot for Ionospheric Correction for cycle 17.**

Currently, the Bent Model does not provide values for latitudes >82 degrees. However, this should not affect the nominal science data because for offline Level 2 processing the Ionospheric Correction, as shown in Figure 6-24, is taken from the GIM model by default and the Bent Model is only used as an alternative when this GIM is not available.

## 7 ANOMALY REPORTS

An updated list of all known anomalies which have been opened and tracked on the CryoSat Instrument Processing Facility (IPF) and affect the quality of the distributed data products, is provided at the link below:

<https://earth.esa.int/web/quest/missions/cryosat/product-status>

This list of anomalies is complete and up to date as of 08 March 2013 and is updated on a regular basis.

## **8 README DOCUMENTS ON PERFORMANCE AND QUALITY**

This section lists any current readme documents or notifications which have been issued and are relevant to the quality of CryoSat data.

There were no readme documents issued during the period covered by this cycle.