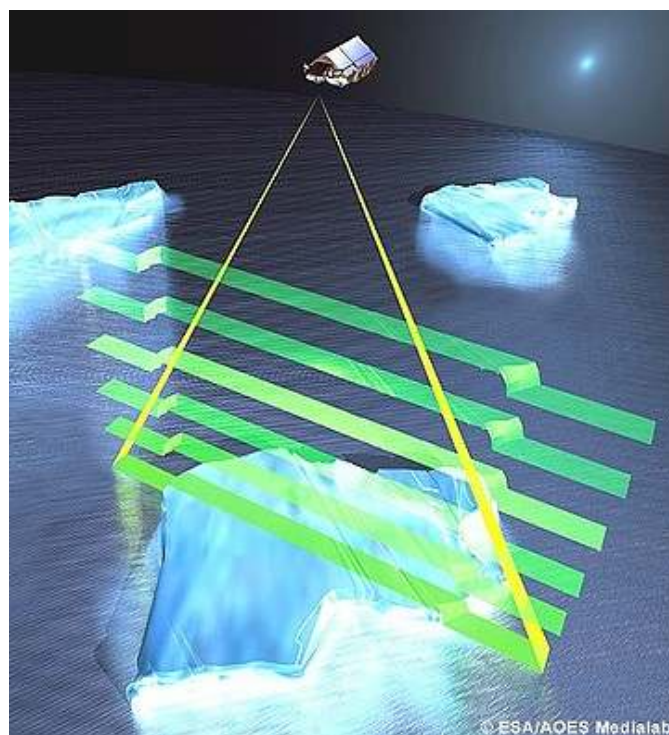


CRYOSAT

CYCLIC REPORT



CYCLE #2

17TH NOVEMBER 2010 – 15TH DECEMBER 2010

Prepared by/ préparé par	CryoSat IDEAS Team
Reference/ référence	
Issue/ édition	1
Revision/ révision	0
Date of issue/ date d'édition	4 December 2013
Document type/ type de document	Technical Note

A P P R O V A L

Title <i>titre</i>	CryoSat Cyclic Report – Cycle 2	Issue 1 <i>issue</i>	Revision 0 <i>revision</i>
-----------------------	---------------------------------	-------------------------	-------------------------------

Author <i>auteur</i>	IDEAS CryoSat QC Team	Date <i>date</i>	4 December 2013
-------------------------	-----------------------	---------------------	--------------------

C H A N G E L O G

Reason for change <i>raison du changement</i>	Issue <i>issue</i>	Revision <i>revision</i>	Date <i>date</i>
--	-----------------------	-----------------------------	---------------------

C H A N G E R E C O R D

ISSUE: 1 REVISION: 0

Reason for change <i>raison du changement</i>	Page(s) <i>page(s)</i>	Paragraph(s) <i>paragraph(s)</i>
--	---------------------------	-------------------------------------

T A B L E O F C O N T E N T S

1 INTRODUCTION.....	1
1.1 Acronyms and Abbreviations.....	2
1.2 Reference Documents.....	2
2 CYCLE OVERVIEW.....	3
3 SOFTWARE & AUX FILE VERSION CONFIGURATION	4
3.1 IPF Software Version	4
3.2 Processor Versions for IPF1 and IPF2	4
3.3 Auxiliary Files	5
3.3.1 Static Auxiliary Files	5
3.3.2 Dynamic Auxiliary Files.....	6
3.3.3 Changes of Auxiliary Files during the cycle.....	6
4 PDS STATUS	7
4.1 SIRAL Instrument Unavailability	7
4.2 SIRAL Level 1B and Level 2 Data Availability.....	7
5 DATA QUALITY CONTROL.....	8
5.1 Product Format Checks.....	8
5.2 Software Version Checks	8
5.3 Auxiliary Data File Usage Checks	8
5.4 Product Parameters	9
5.4.1 Monitoring of SIRAL Mode Changes.....	9
5.4.2 Surface Type	11
5.4.3 Backscatter (Sigma0)	12
5.4.4 Waveform Peakiness.....	15
5.4.5 Freeboard.....	18
5.4.6 Snow Depth.....	18
5.4.7 Sea Ice Concentration	19
5.4.8 Snow Density	19
5.4.9 Surface Height.....	19
5.5 Quality Flags	21
5.6 Crossover Analysis.....	22
5.6.1 CrossOver Statistics.....	22
5.6.2 Elevation Maps	23
5.6.3 Backscatter (sigma0) Maps	25
5.7 External Auxiliary Corrections.....	27
5.7.1 Dry Tropospheric Correction.....	27
5.7.2 Wet Tropospheric Correction.....	28
5.7.3 Inverse Barometric correction.....	29
5.7.4 Dynamic Atmosphere correction.....	30
5.7.5 Ionospheric Correction	31
6 ANOMALY REPORTS.....	32
7 README DOCUMENTS ON PERFORMANCE AND QUALITY.....	33

1 INTRODUCTION

CryoSat is an altimetry satellite built by the European Space Agency and dedicated to polar observation. It embarks on a three-and-a-half-year mission to determine variations in the thickness of the Earth's continental ice sheets and marine ice cover, and to test the prediction of thinning Arctic ice due to climate change.

CryoSat is designed to acquire continuously, switching automatically between its three measurement modes according to a Geographical Mode Mask:

- Synthetic Aperture Radar (SAR) is operated over sea-ice and over some ocean basins and coastal zones.
- SAR Interferometric (SARIn) mode is used over steeply sloping ice-sheet margins, small ice caps and areas of mountain glaciers. It is also used over some major hydrological river basins and some ocean areas with important mesoscale variability.
- Low Resolution Mode (LRM) is operated over the areas of the continental ice sheets, over oceans and over land not covered by other modes.

This CryoSat Cyclic Report is distributed by IDEAS team to keep the CryoSat community informed of the overall mission performance and the status of the SIRAL instrument.

The report is based on a 30-day reporting period, which has been defined by UCL/MSSL since the Transfer to Operations (TTO), as part of the routine QA monitoring activity. This 30-day cycle has been defined purely for the purpose of statistic reporting and does not correspond to an official 30-day sub cycle. The actual repeat cycle for CryoSat is 369 days, which consists of 5344 orbits.

This document is available online at: <http://earth.eo.esa.int/missions/cryosat/reports/cyclic/>.

1.1 Acronyms and Abbreviations

AR	Anomaly Report
CFI	Customer Furnished Item
CNES	Centre National d'Études Spatiales
CPOM	Centre for Polar Observation Modelling
DEM	Digital Elevation Model
ECMWF	European Centre for Medium-term Weather Forecasting
ESA	European Space Agency
ESOC	European Space Operation Centre
FDM	Fast Delivery Mode
GDR	Geophysical Data Record
GIM	Global Ionospheric Map
GPS	Global Positioning System
IDEAS	Instrument Data quality Evaluation and Analysis Service
IPF	Instrument Processing Facilities
L1B/L2	Level 1B/Level 2
LRM	Low Resolution Mode
LTA	Long Term Archive
MF	Monitoring Facility
MSSL	Mullard Space Science Laboratory
NRT	Near Real Time
OCM	Orbit Control Manoeuvre
PCONF	Parameter Configuration File
PDS	Payload Data System
QA	Quality Assurance
QCC	Quality Control for CryoSat
RMS	Root Mean Square
SSALTO	Système au Sol d'Altimétrie et d'Orbitographie
SAR	Synthetic Aperture Radar mode
SARIn	SAR Interferometric mode
SID	SARIn Degraded
SIRAL	SAR Interferometric Radar Altimeter
SPR	Software Problem Report
SW	Software
TTO	Transfer to Operations
UCL	University College London
WGS84	World Geodetic System of 1984

1.2 Reference Documents

RD.1 CRYOSAT Ground Segment Instrument Processing Facility L1b Products Format Specification, CS-RS-ACS-GS-5106, 4.9

RD.2 CRYOSAT Ground Segment Instrument Processing Facility L2 Products Format Specification, CS-RS-ACS-GS-5123, 2.8

RD.3 Updated List of CryoSat IPF Anomalies. Latest version is available online at:
http://earth.eo.esa.int/missions/cryosat/data_status/.

2 CYCLE OVERVIEW

Cyclic Number: 2
Cycle Start: 17th November 2010
Cycle End: 15th December 2010

This report covers the analysis of reprocessed CryoSat data for November and December 2010.

The health of the SIRAL instrument and the quality of all Level 1B and Level 2 data products was nominal throughout this cycle.

3 SOFTWARE & AUX FILE VERSION CONFIGURATION

3.1 IPF Software Version

The versions of the Instrument Processing Facilities (IPF) software installed within the Long Term Archive (LTA) and used for reprocessing of cycle 2 data are listed below:

CryoSat IPF for Level 1 (IPF1): Version **Vk1.0**

CryoSat IPF for Level 2 (IPF2): Version **Vj1.2**

3.2 Processor Versions for IPF1 and IPF2

The current versions of each processor versions within IPF1 and IPF2 are listed below:

L1B Products	Processor Version
L1B LRM	SIR1LRM/4.0
L1B SAR	SIR1SAR/4.0
L1B SARIN	SARIN/4.0
L1B FDM	SIR1FDM/2.3
CAL1 LRM	SIR1LRC1/3.9
CAL1 SAR	SIR1SAC1/3.9
CAL1 SARIN	SIR_SIC1/3.9
CAL2 SAR	SIR1SAC2/4.0
CAL2 SARIN (RX1 and RX2)	SIR1SIC2/3.9

Table 3-1 IPF1 Processor versions.

L2 Products	Processor Version
L2 FDM	IPF2FDM/2.1
L2 LRM	IPF2LRM/2.4
L2 SAR	IPF2SAR_A/2.4
L2 SARIN	IPF2SRN/2.4
L2 GDR	IPF2GDR_A/2.4

Table 3-2 IPF2 Processor versions.

The complete historic IPF baseline is available online at:
http://earth.eo.esa.int/missions/cryosat/ipf_baseline/.

3.3 Auxiliary Files

3.3.1 STATIC AUXILIARY FILES

CryoSat processing for this reporting period used the following static auxiliary files:

Static Auxiliary File	Current ADF in use
Cartwright Table (Solid Earth Tide)	CS_OPER_AUX_CARTWR_0000000T000000_9999999T999999_0002
Digital Surface Model	CS_OPER_AUX_DEMMSL_0000000T000000_9999999T999999_0005
Bent Modified Dip Map Model	CS_OPER_AUX_DIPMAP_0000000T000000_9999999T999999_0002
Geoid	CS_OPER_AUX_GEOID__0000000T000000_9999999T999999_0002
Surface Identification Grid	CS_OPER_AUX_LS_MAP_0000000T000000_9999999T999999_0001
Bent Ionospheric Correction File	CS_OPER_AUX_MICOEF_0000000T000000_9999999T999999_0002
Mean Sea Surface	CS_OPER_AUX_MSSURF_0000000T000000_9999999T999999_0005
Ocean Tides	CS_OPER_AUX_OCTIDE_0000000T000000_9999999T999999_0003
Ocean Depth/Land Elevation grid	CS_OPER_AUX_ODLE___0000000T000000_9999999T999999_0002
Climatology pressure grids for each month at 00h	CS_OPER_AUX_PRSS00_0000000T000000_9999999T999999_0001
Climatology pressure grids for each month at 06h	CS_OPER_AUX_PRSS06_0000000T000000_9999999T999999_0001
Climatology pressure grids for each month at 12h	CS_OPER_AUX_PRSS12_0000000T000000_9999999T999999_0001
Climatology pressure grids for each month at 18h	CS_OPER_AUX_PRSS18_0000000T000000_9999999T999999_0001
S1 tide grid of monthly mean of global amplitude	CS_OPER_AUX_S1AMPL_0000000T000000_9999999T999999_0001
S2 tide grid of monthly mean of global amplitude	CS_OPER_AUX_S2AMPL_0000000T000000_9999999T999999_0001
S1 tide grid of monthly mean of global phase	CS_OPER_AUX_S1PHAS_0000000T000000_9999999T999999_0001
S2 tide grid of monthly mean of global phase	CS_OPER_AUX_S2PHAS_0000000T000000_9999999T999999_0001
Snow Depth Climatology File for November	CS_OPER_AUX_SDC_11_0000000T000000_9999999T999999_0005
Snow Depth Climatology File for December	CS_OPER_AUX_SDC_12_0000000T000000_9999999T999999_0005
Sea Ice Concentration Climatology for November	CS_OPER_AUX_SICC11_0000000T000000_9999999T999999_0005
Sea Ice Concentration Climatology for December	CS_OPER_AUX_SICC12_0000000T000000_9999999T999999_0005
Sea State Bias	CS_OPER_AUX_SSBIAAS_0000000T000000_9999999T999999_0003
Tidal Loading	CS_OPER_AUX_TDLOAD_0000000T000000_9999999T999999_0003
Altimeter Wind Speed table (Abdalla2007 Model)	CS_OPER_AUX_WNDCHE_0000000T000000_9999999T999999_0001

Table 3-3 List of current static auxiliary files in use.

3.3.2 DYNAMIC AUXILIARY FILES

CryoSat processing for this reporting period also used the following dynamic auxiliary files:

Dynamic Auxiliary File	Current ADF in use
Solar Activity Index	CS_OPER_AUX_SUNACT_19910101T000000_20140601T000000_0001
Gaussian Altimetric Grid	CS_OPER_AUX_ALTGRD_20110504T100000_20301231T235959_0002
GPS Ionospheric Map	CS_OPER_AUX_IONGIM_YYYYMMDDT000000_YYYYMMDDT235959 <i>Updated daily</i>
Polar Location	CS_OPER_AUX_POLLOC_19870101T000000_YYYYMMDDT000000 <i>Updated twice a week</i>
Wet Troposphere	CS_OPER_AUX_WETTRP_YYYYMMDDTxx0000_YYYYMMDDTxx0000 <i>Meteo File *</i>
Wind U-component	CS_OPER_AUX_U_WIND_YYYYMMDDTxx0000_YYYYMMDDTxx0000 <i>Meteo File *</i>
Wind V-component	CS_OPER_AUX_V_WIND_YYYYMMDDTxx0000_YYYYMMDDTxx0000 <i>Meteo File *</i>
Surface Pressure	CS_OPER_AUX_SURFP_YYYYMMDDTxx0000_YYYYMMDDTxx0000 <i>Meteo File *</i>
Sea Mean Pressure	CS_OPER_AUX_SEAMPS_YYYYMMDDTxx0000_YYYYMMDDTxx0000 <i>Meteo File *</i>
Dynamic Atmospheric Correction	CS_OPER_AUX_MOG_2D_YYYYMMDDTxx0000_YYYYMMDDTxx0000 <i>Meteo File *</i>
Dynamic Sea Ice Concentration	CS_OPER_AUX_SEA_IC_YYYYMMDDT000000_YYYYMMDDT235959 <i>Updated every 3 days</i>

Table 3-4 List of dynamic auxiliary files in use.

*Meteo files are provided daily for each 6 hour grid (00h, 06h, 12h and 18h). Each product requires at least two, or sometimes three, of each Meteo file from the two grids between which the product validity lies.

3.3.3 CHANGES OF AUXILIARY FILES DURING THE CYCLE

During the reporting period, there were no static auxiliary file updates.

4 PDS STATUS

4.1 *SIRAL Instrument Unavailability*

The following unavailability periods have been noted for SIRAL data during this cycle:

UTC Start	UTC Stop	Reason	Planned
23/11/2010 01:00:00	23/11/2010 13:17:19	On-board Maintenance	Yes
28/11/2010 07:28:00	28/11/2010 08:57:00	Ground Segment Anomaly	No
29/11/2010 19:38:00	30/11/2010 02:24:00	Ground Segment Anomaly	No
12/12/2010 18:49:10	12/12/2010 01:29:42	Ground Segment Anomaly	No
16/12/2010 02:53:12	16/12/2010 03:42:51	Orbit Manoeuvre	Yes
16/12/2010 14:16:00	16/12/2010 14:47:14	On-board Maintenance	Yes

Table 4-1 SIRAL instrument unavailability periods for cycle 2.

The historic list of all SIRAL data unavailability periods is available online at:
http://earth.eo.esa.int/missions/cryosat/unavailability_periods/

4.2 *SIRAL Level 1B and Level 2 Data Availability*

Level 1B and Level 2 CryoSat data, for the period 16th July 2010 to 31st January 2012, is currently in the process of being reprocessed with the Baseline B processors.

As the cycle covered by this report falls within the period of the CryoSat reprocessing campaign, the following information concerning the availability of higher level reprocessed products is provided by the team performing the reprocessing of Level 1B and Level 2 data at the LTA in CNES.

The availability of each level of data is calculated with respect to the available data from the preceding processing level:

Availability of reprocessed Level 1B data for 1st - 31st March 2011: **99.2%**

Availability of reprocessed Level 2 data for 1st – 31st March 2011: **99.8%**

Availability of reprocessed Level 1B data for 1st – 30th April 2011: **98.8%**

Availability of reprocessed Level 2 data for 1st – 30th April 2011: **100%**

5 DATA QUALITY CONTROL

5.1 Product Format Checks

As part of the Quality Control activities carried out on reprocessed CryoSat data, a check is conducted to ensure that all expected Level 1B and Level 2 data products have been generated with the correct format and that each CryoSat product is composed of two files; XML Header (.HDR) and Product File (.DBL).

Product Filename	Format Check Discrepancy
None	N/A

During cycle 2, there were no product format errors detected through this check.

5.2 Software Version Checks

As part of the Quality Control activities carried out on reprocessed CryoSat data, a check is conducted to ensure that all CryoSat products have been generated with the correct software version, listed in Table 3-1 and Table 3-2.

Product Filename	Incorrect SW version detected
None	N/A

During cycle 2, there were no software version errors detected through this check.

5.3 Auxiliary Data File Usage Checks

All Level 1B and Level 2 data products are routinely checked to ensure the process has used all the relevant auxiliary data files in order to provide all the necessary geophysical corrections.

Product Filename	Missing ADF
None	N/A

During cycle 2, there were no data products flagged through this check.

5.4 Product Parameters

5.4.1 MONITORING OF SIRAL MODE CHANGES

CryoSat is designed to acquire continuously whilst switching automatically between its three nominal measurement modes, LRM, SAR and SARIn, according to a Geographical Mode Mask. Additionally, if one SIRAL receiver chain should fail then the instrument can operate in SARIn mode with one channel and this is referred to as SARIn Degraded (SID) mode. As the mode mask is updated regularly primarily to account for changes in sea-ice extent, between the different CryoSat cycles changes are expected in the SAR and LRM mode extents in areas of sea-ice.

Figure 5-1 shows the daily percentages of each SIRAL mode for cycle 2. Please note that the daily percentages for each mode are not available prior to the 8th December 2010; therefore, this data is not available for this figure.

Further trends on both a cyclic and weekly basis are available on the MSSL Quality Monitoring website: http://cryosat.mssl.ucl.ac.uk/qa/view_mode_trend.php?dtlength=7.

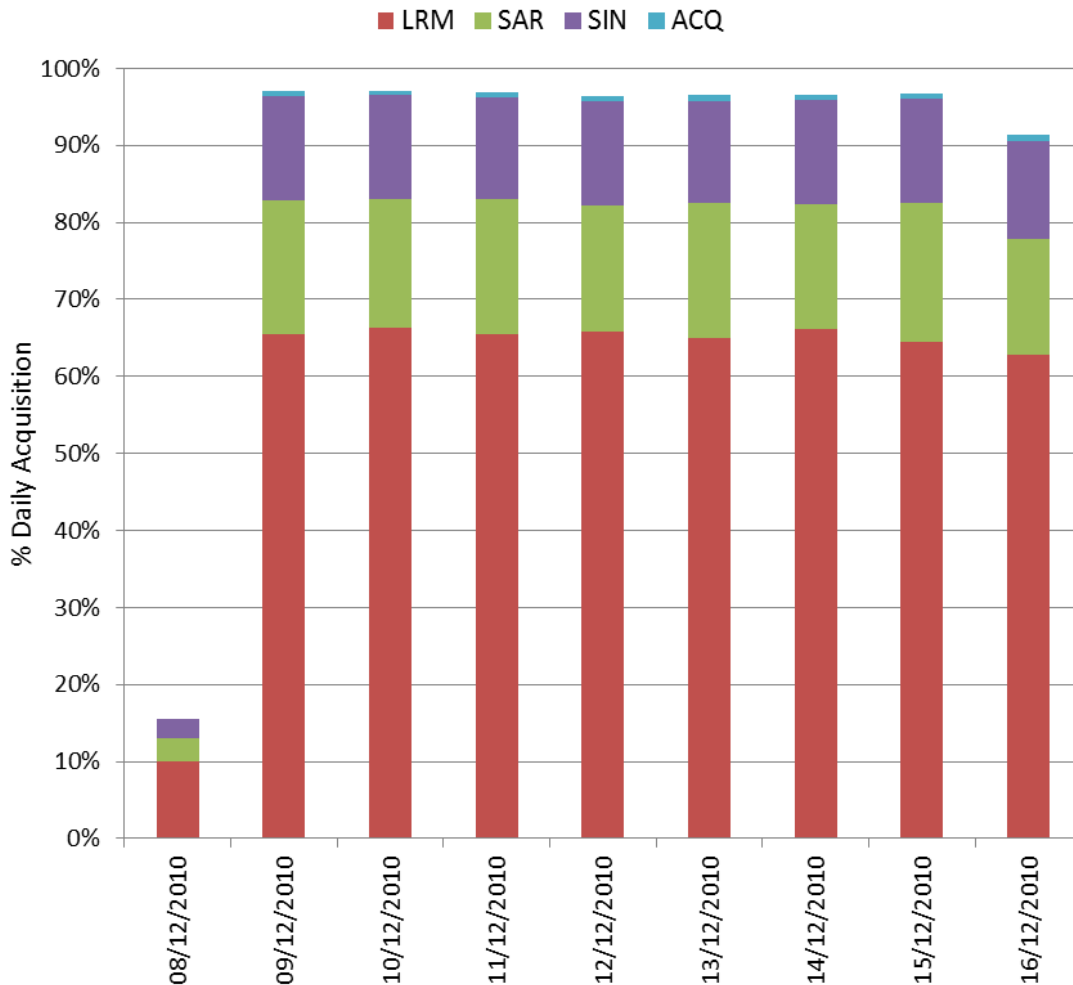


Figure 5-1 Daily percentages of SIRAL modes for cycle 2.

Figure 5-2 shows global and polar plots of the SIRAL Modes acquired during cycle 2. These plots are generated from Level 2 GDR data, which includes a SIRAL Mode indicator for each 20 Hz record.

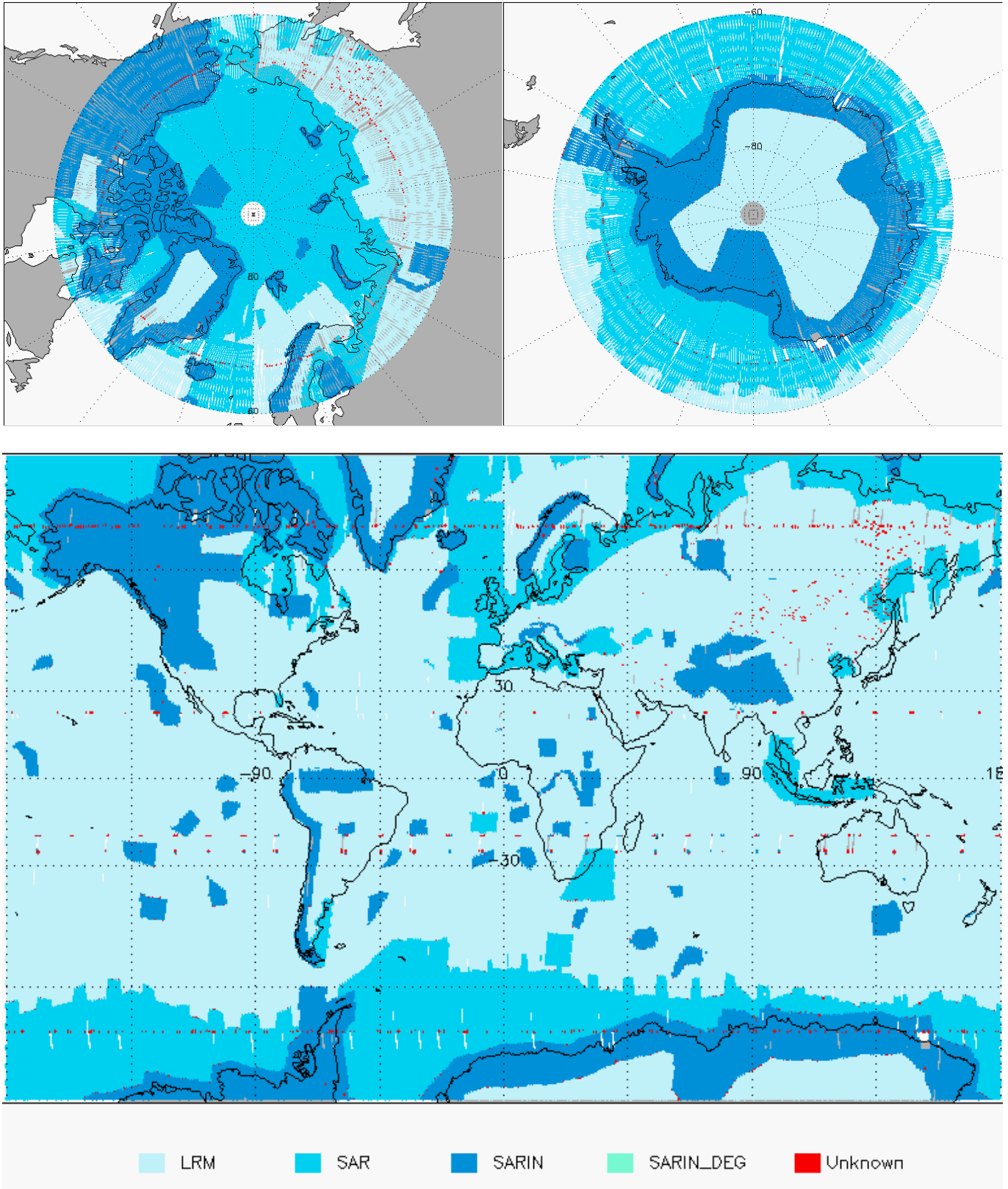


Figure 5-2 Global and Polar plots of SIRAL Modes for cycle 2.

5.4.2 SURFACE TYPE

Figure 5-3 shows the surface type for cycle 2 over a global plot. The data is extracted from the Level 2 data products, which includes a surface type flag. The bit values of this flag provide a classification for the different surface type at nadir for the corresponding measurement location.

The classification originates from a model provided by the ESA Geophysical CFI library.

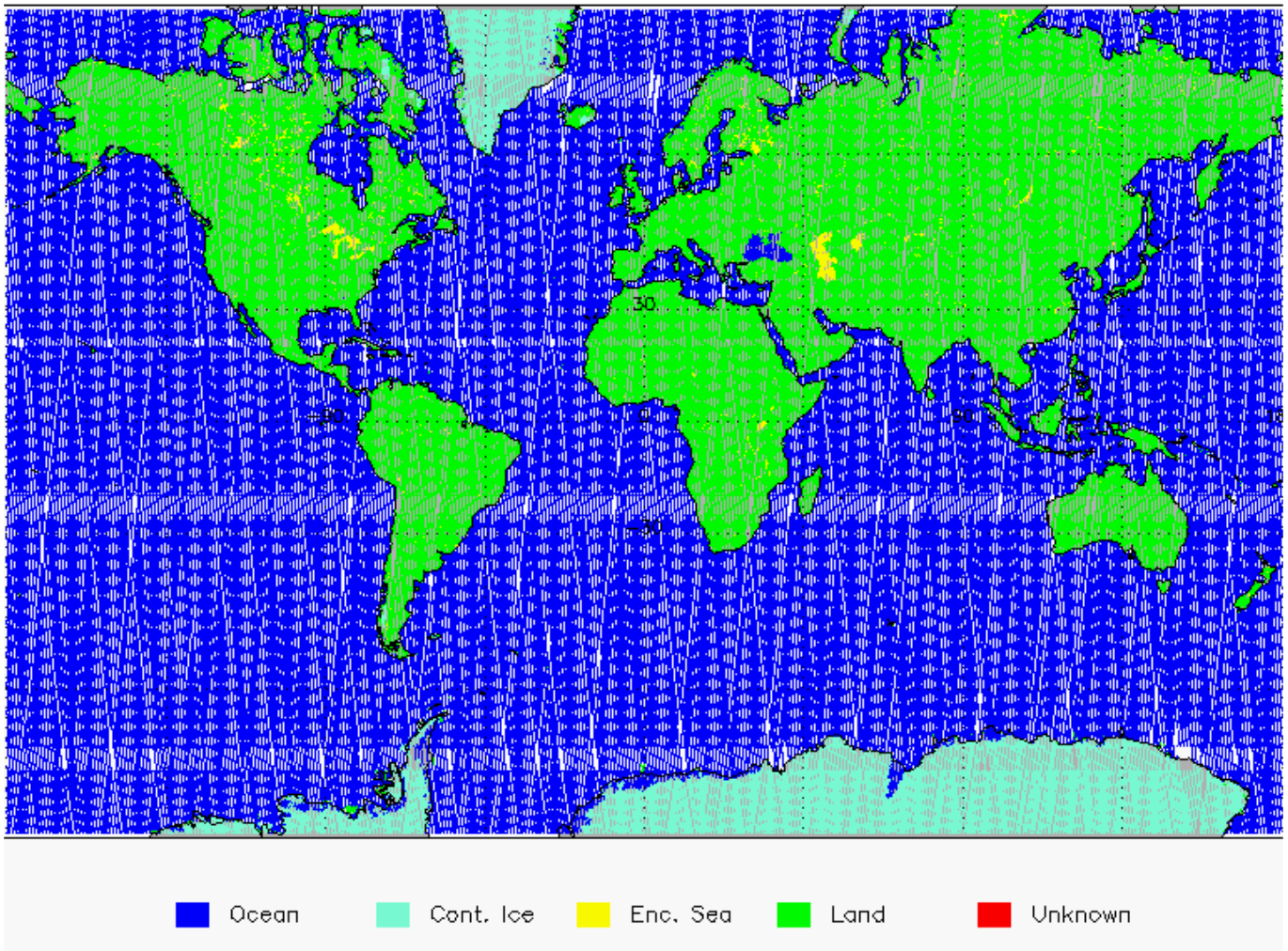


Figure 5-3 Global plot of Surface Type for cycle 2.

% Open Ocean	% Land	% Continental Ice	% Enclosed Sea	% Unknown
67.48	21.41	10.74	0.35	0.02

Table 5-1 Surface Type statistics for cycle 2.

There is currently an Anomaly Report open to investigate occurrences of the ‘Surface Type’ flag incorrectly flagging ocean. This investigation is on-going and is due to be closed with the next IPF update.

5.4.3 BACKSCATTER (SIGMA0)

Each 20 Hz measurement record includes a radar backscatter (σ_0) value which provides information about the observed surface. It is a function of the radar frequency, polarisation and incidence angle and the target surface roughness, geometric shape and dielectric properties.

Figure 5-4 shows global and polar plots of this parameter for cycle 2, for all three SIRAL modes. At Level 2, the backscatter coefficient is fully corrected, including instrument gain corrections and bias.

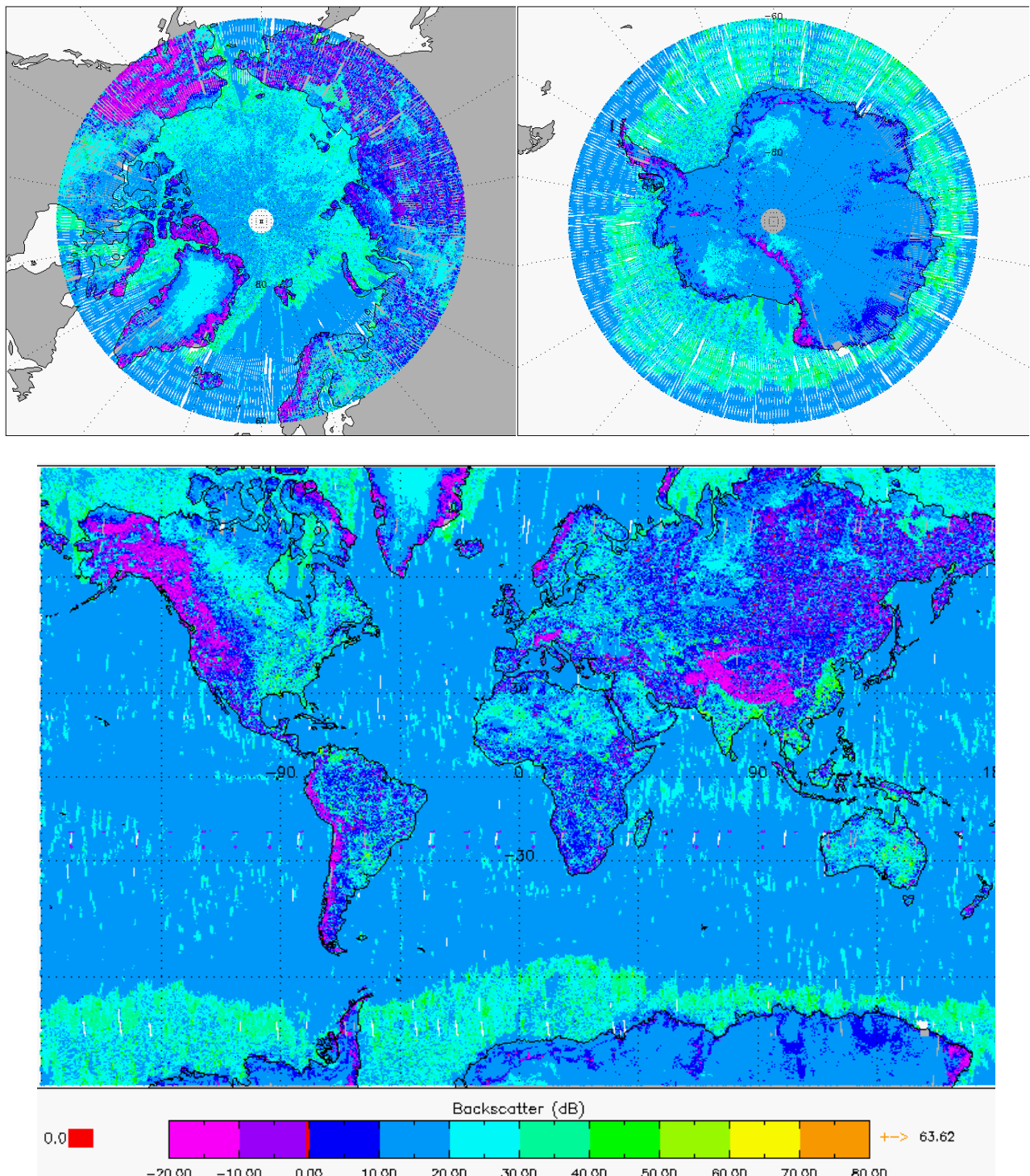


Figure 5-4 Global and Polar plots of Backscatter for cycle 2.

Figure 5-5, Figure 5-6 and Figure 5-7 below provide histograms for the Backscatter (σ_0) parameter, for each of the SIRAL modes.

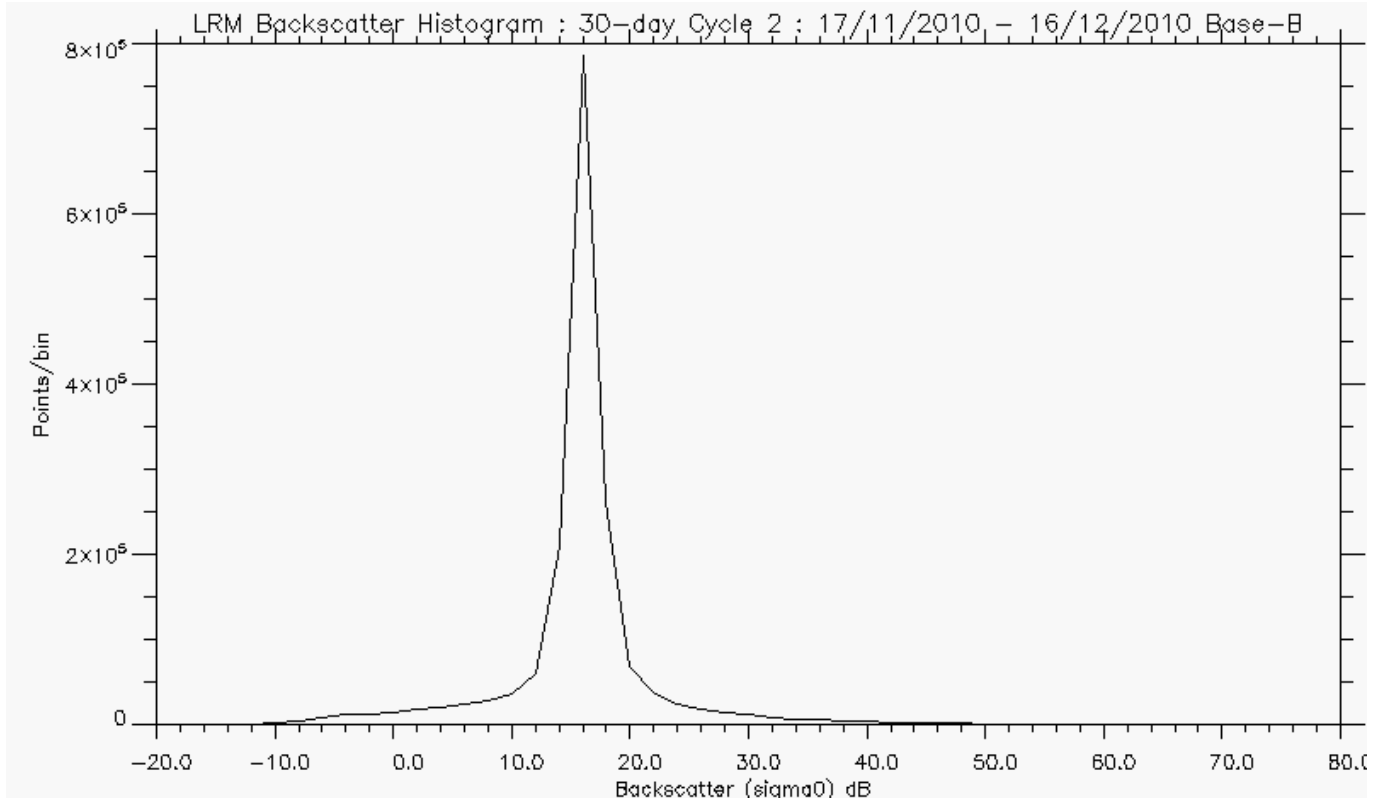


Figure 5-5 Backscatter Histogram for LRM, cycle 2.

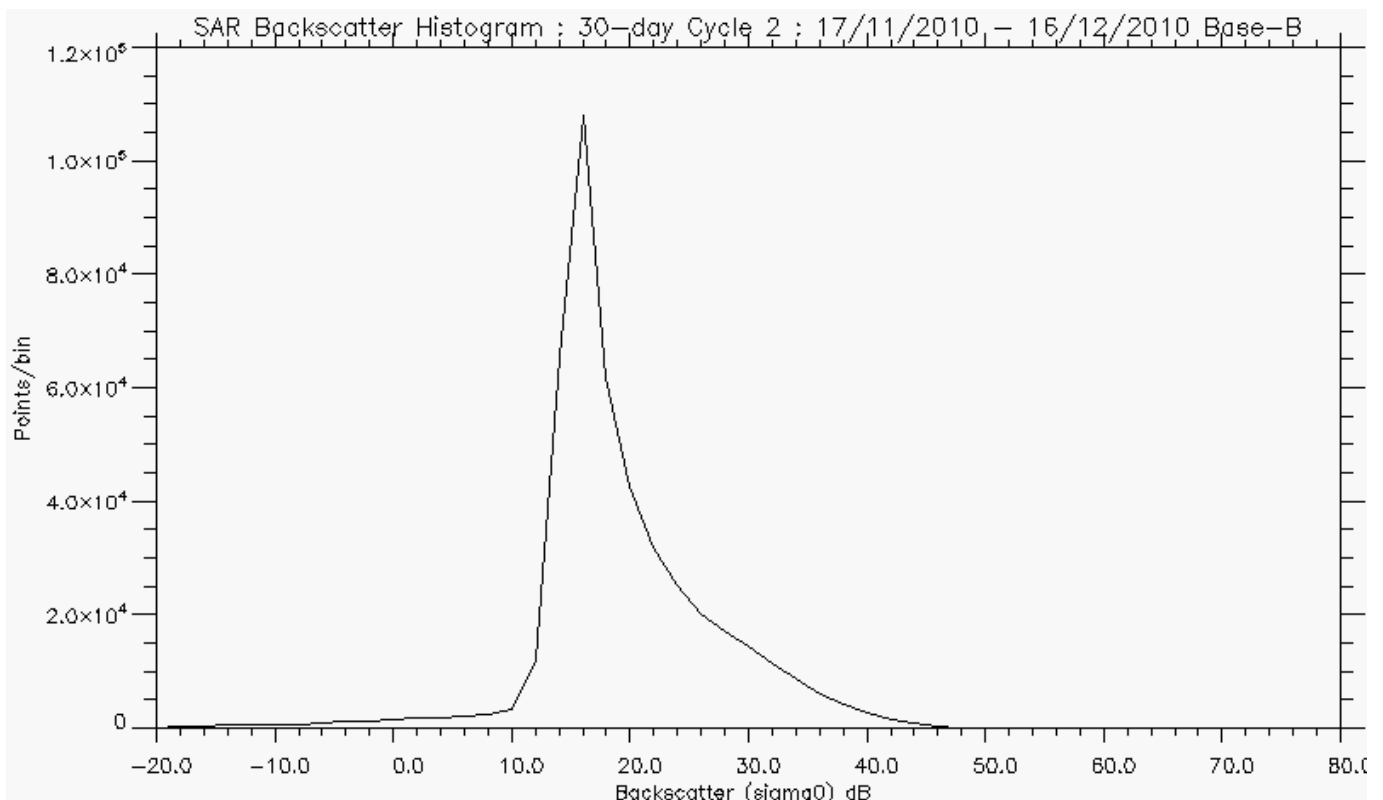


Figure 5-6 Backscatter Histogram for SAR, cycle 2.

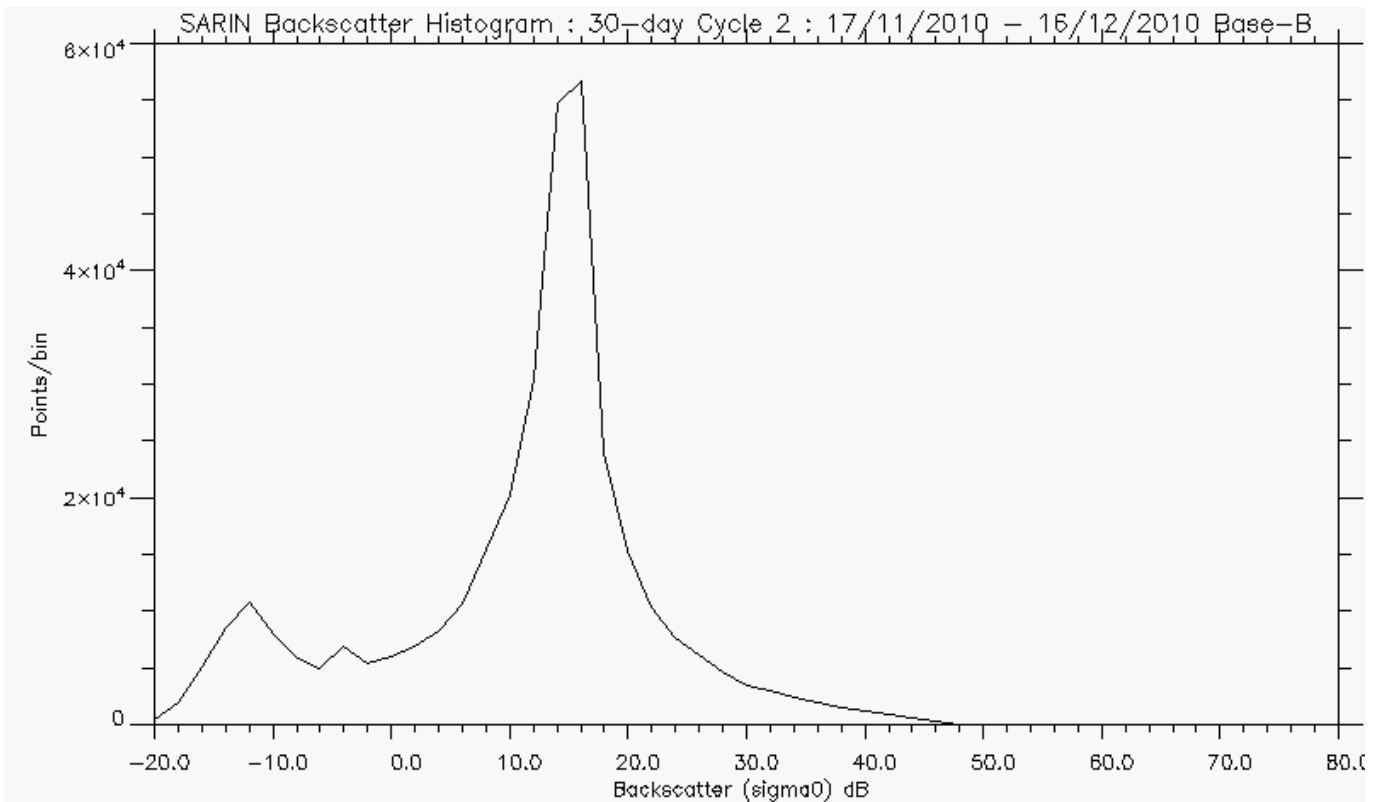


Figure 5-7 Backscatter Histogram for SARIn, cycle 2.

It has been noted that in recent months backscatter values have been declining by ~ 0.1 dB per month. The power level transmitted by SIRAL has also been declining by a few 100ths of a dB per month. Nominally the CAL1 mode detects this and provides a correction to the sigma0 values, however there is currently an Anomaly Report open on this issue as this CAL1 correction is currently being applied with the wrong sign, hence the apparent drop in power. This problem is currently under investigation but CryoSat data users should be aware as this can in turn affect wind speed and sea state bias correction values.

5.4.4 WAVEFORM PEAKINESS

CryoSat Level 2 data includes a Waveform Peakiness value (field 39) for each 20 Hz measurement record. Peakiness is a ratio of the maximum waveform sample (bin) value to the mean value of the bins to the right of the tracking point. It is used to discriminate specular returns from diffuse returns and is used to estimate sea ice thickness.

Figure 5-8, Figure 5-9 and Figure 5-10 below provide global Peakiness histograms for each of the SIRAL modes.

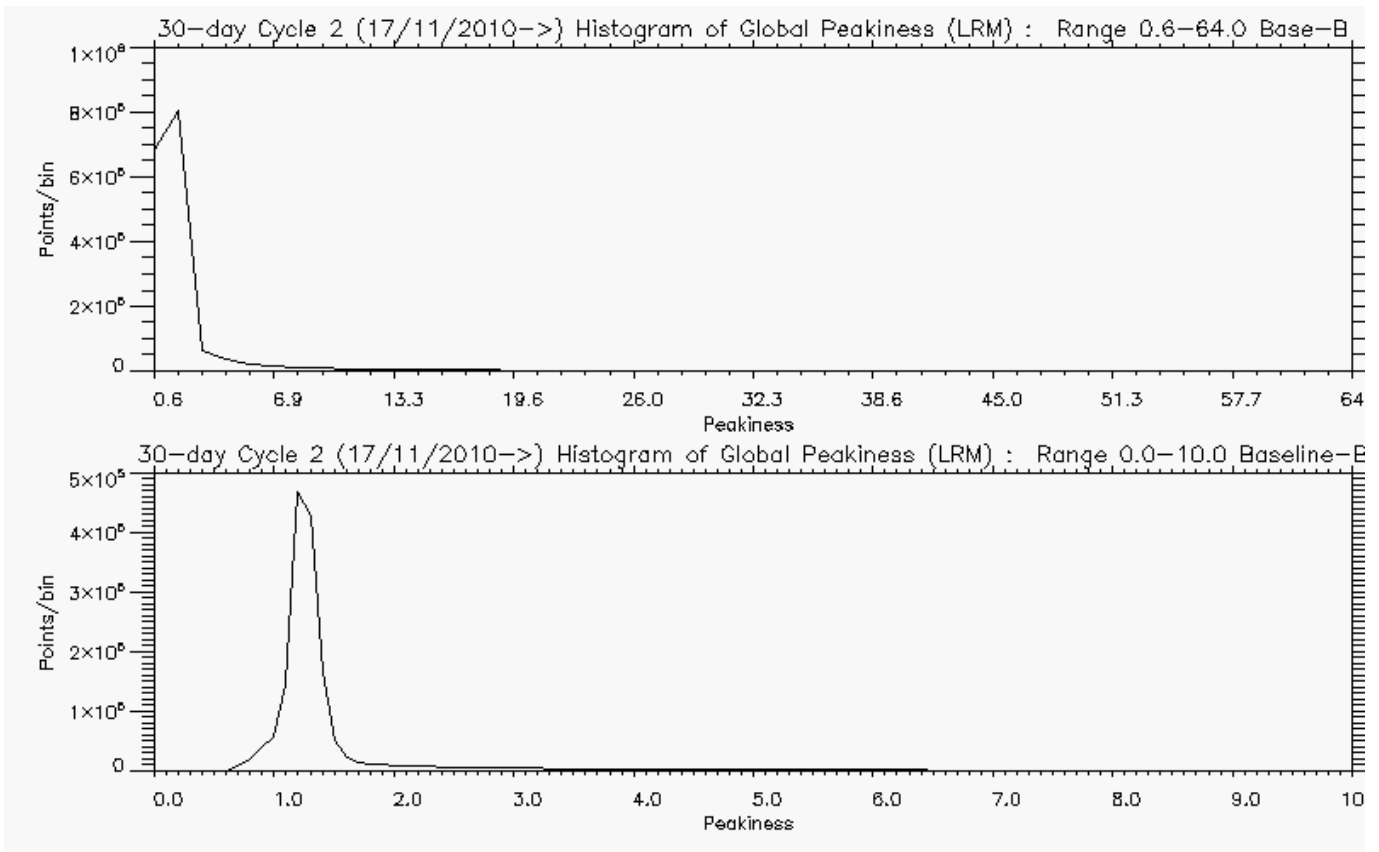


Figure 5-8 Histogram of global Peakiness for LRM, for cycle 2.

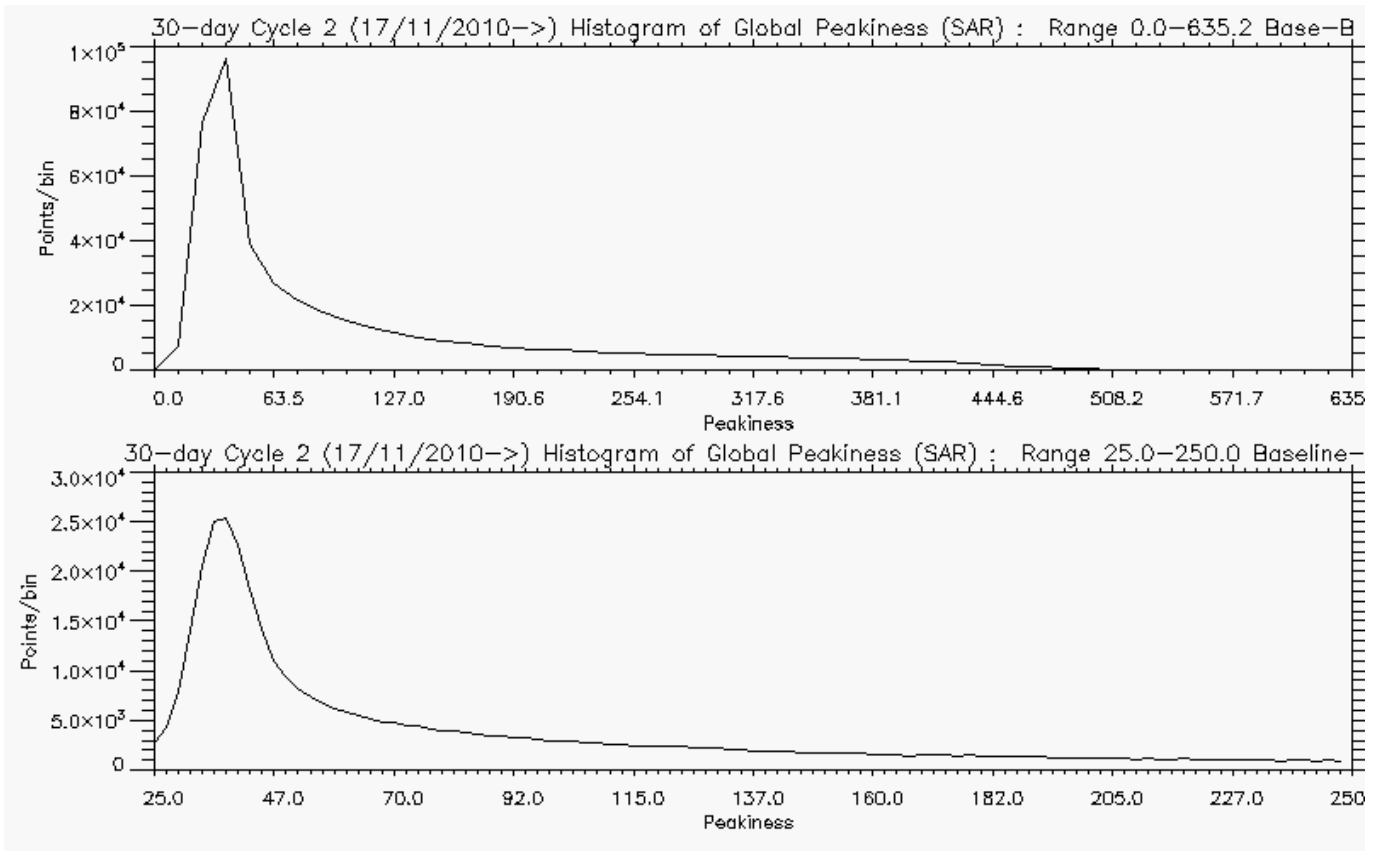


Figure 5-9 Histogram of global Peakiness for SAR, for cycle 2.

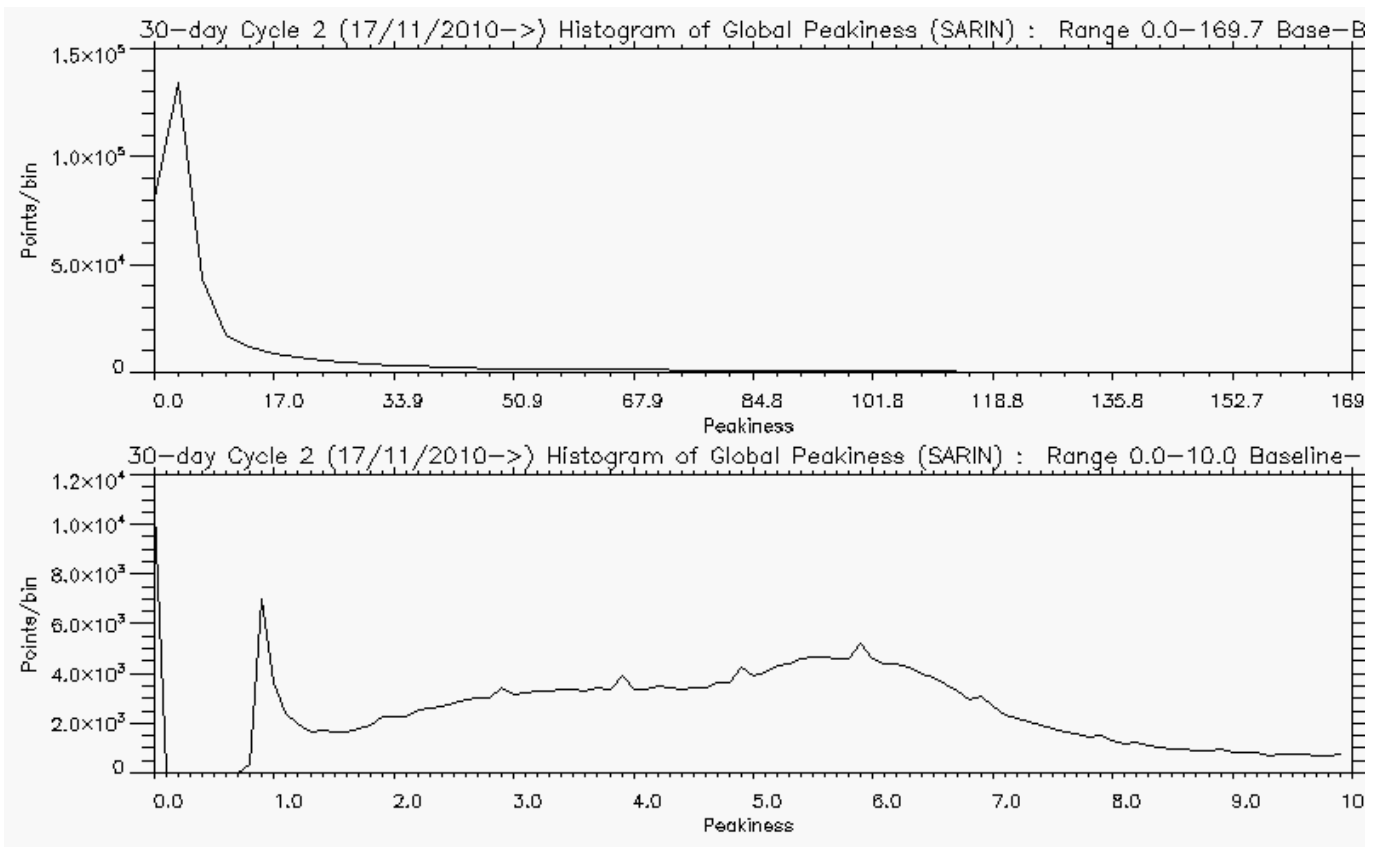


Figure 5-10 Histogram of global Peakiness for SARIn, for cycle 2.

Figure 5-11 shows the Waveform Peakiness for cycle 2, plotted over global and polar plots.

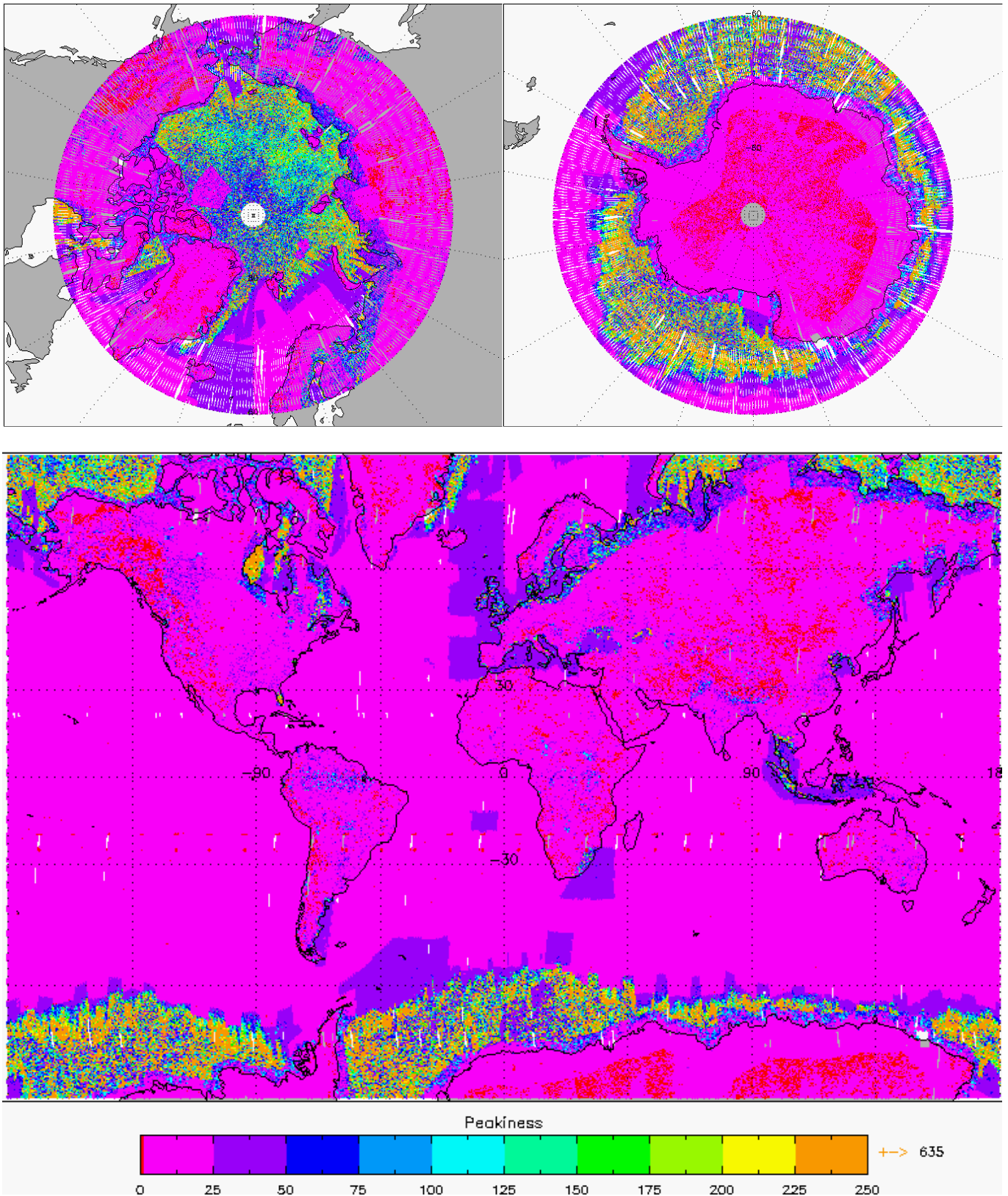


Figure 5-11 Global and Polar plots of Waveform Peakiness for cycle 2.

5.4.5 FREEBOARD

CryoSat Level 2 data also includes a calculation for the Sea Ice Freeboard, which is the height by which an ice floe extends above the mean sea surface. This value can possibly be negative if there is heavy snow load on thin ice. At Level 2 it is calculated using UCL04 model values for snow depth and density.

Presently, the freeboard values are not computed and a default value of -9999 is provided in the products by specification. The freeboard will be computed in the Level 2 products when there is a greater confidence in the knowledge of the Arctic Mean Sea Surface with the launch of the SIR_SAR_2B and SIR_GDR_2B products.

5.4.6 SNOW DEPTH

CryoSat Level 2 data includes a snow depth field (field 24) for each 1 Hz record. The snow depth values (in mm) are extracted from a climatology model, UCL04, and can be used to adjust the freeboard estimate to account for snow-loading. Currently Level 2 products only include snow depth values for the Arctic Region as a climate model for the Antarctic Region is not available.

Figure 5-12 shows a plot of the Snow Depth values, for the Arctic region, extracted from Level 2 products from cycle 2.

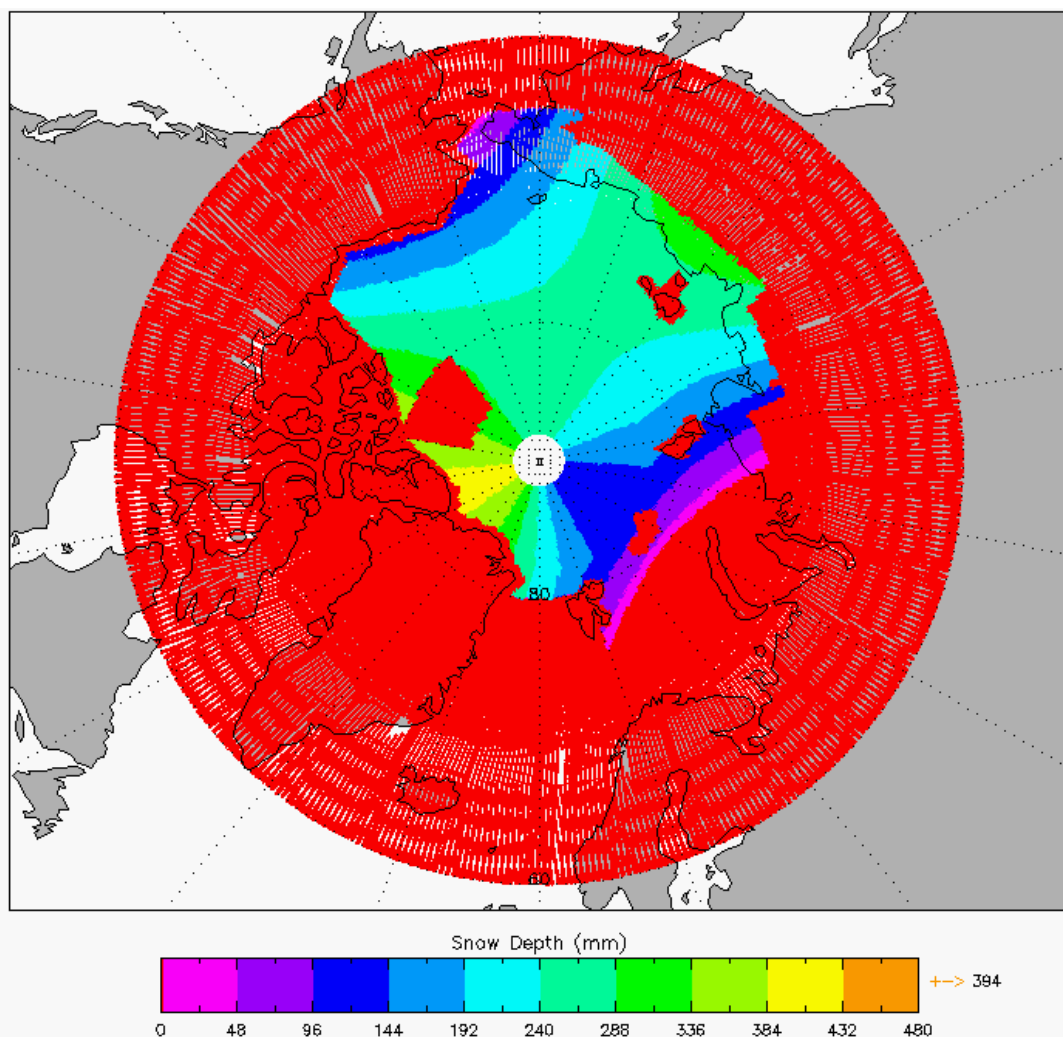


Figure 5-12 Arctic plot of Snow Depth for cycle 2.

5.4.7 SEA ICE CONCENTRATION

CryoSat Level 2 data includes a percentage value for the sea ice concentration field (field 23) for each 1 Hz record.

Figure 5-13 shows the Sea Ice Concentration values extracted from the Level 2 products from cycle 2.

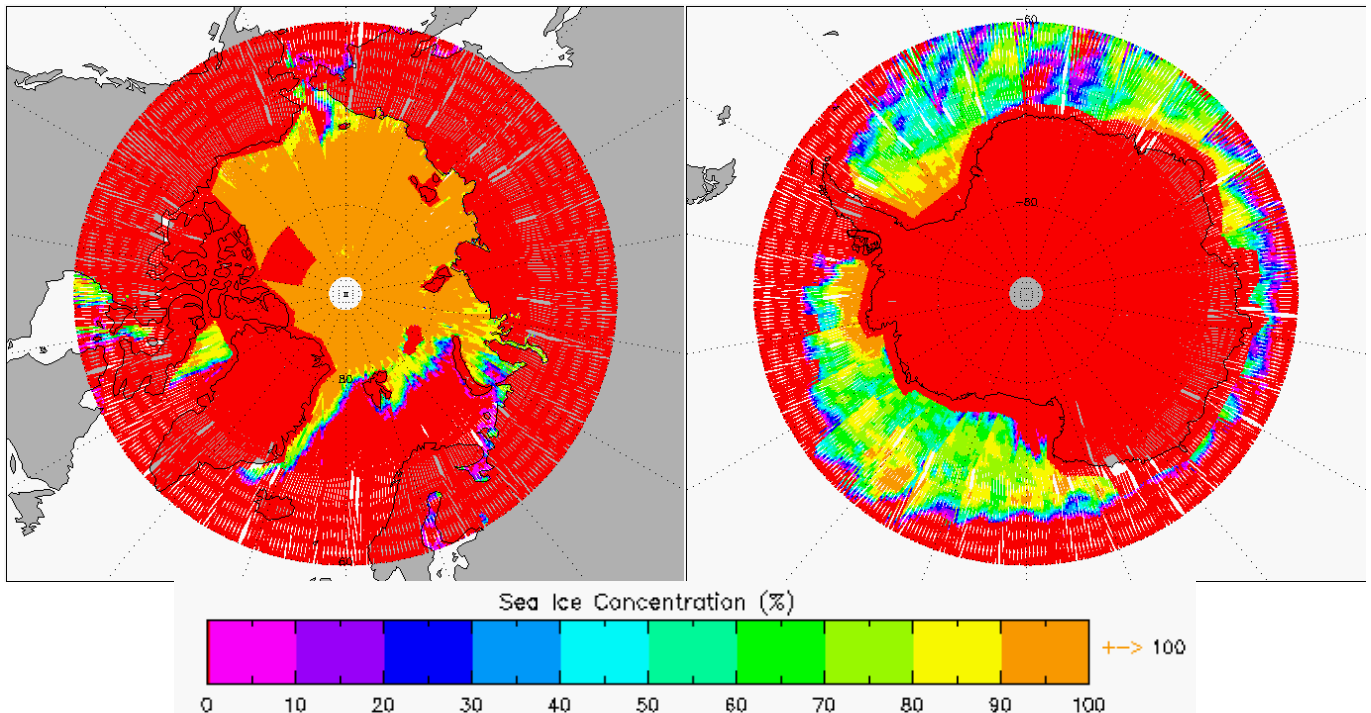


Figure 5-13 Polar plots of Sea Ice Concentration for cycle 2.

5.4.8 SNOW DENSITY

CryoSat Level 2 data also includes a snow density field (field 25) for each 1 Hz record. The snow density value is a constant value which is extracted by the processor from a Parameter Configuration File (PCONF) and this value can be used to adjust the freeboard estimate to account for snow-loading.

The current snow density value used in the CryoSat Level 2 products is 400 kg/m^3 .

5.4.9 SURFACE HEIGHT

CryoSat Level 2 data provides the calculated Surface Height (Level 2 field 34) with reference to the ellipsoid WGS84 for each 20 Hz measurement record. Figure 5-14 shows polar plots of the Surface Height values extracted from the Level 2 products, over land and ocean areas, for cycle 2. Figure 5-15 shows a global plot of the Sea Surface Height values extracted from the Level 2 products over ocean areas for cycle 2.

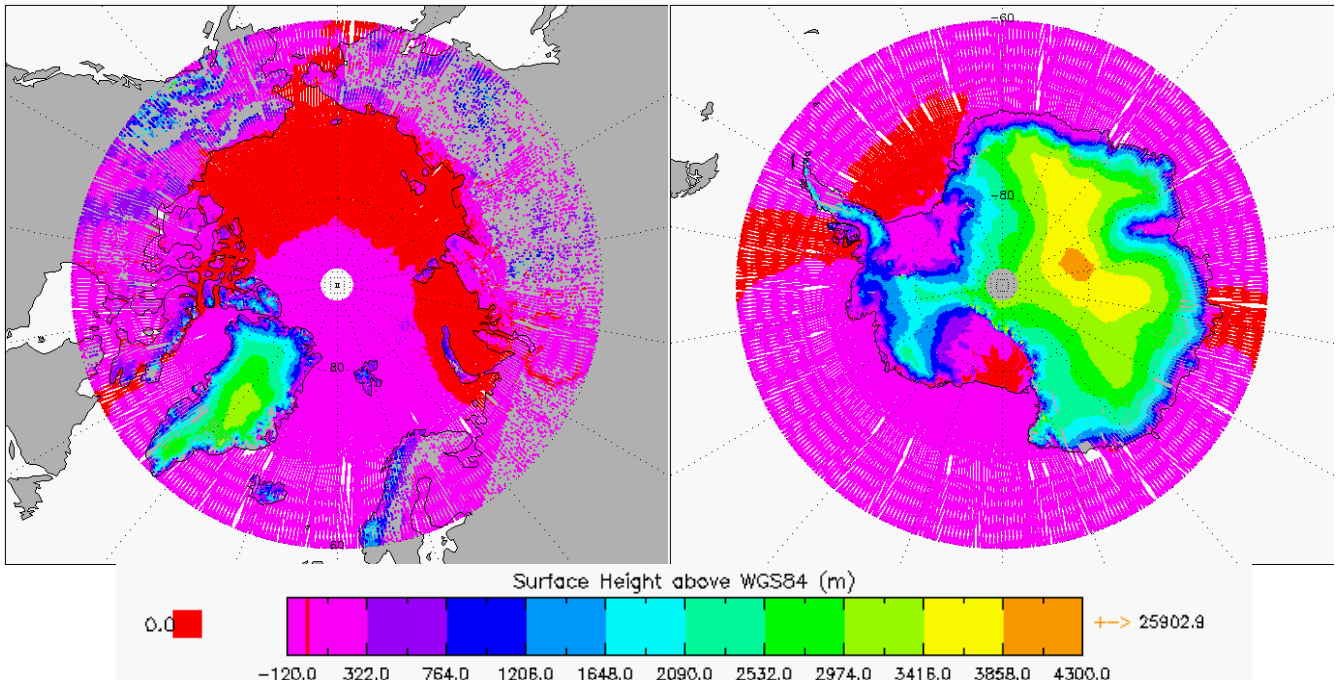


Figure 5-14 Polar plots of Surface Height over land and ocean areas for cycle 2.

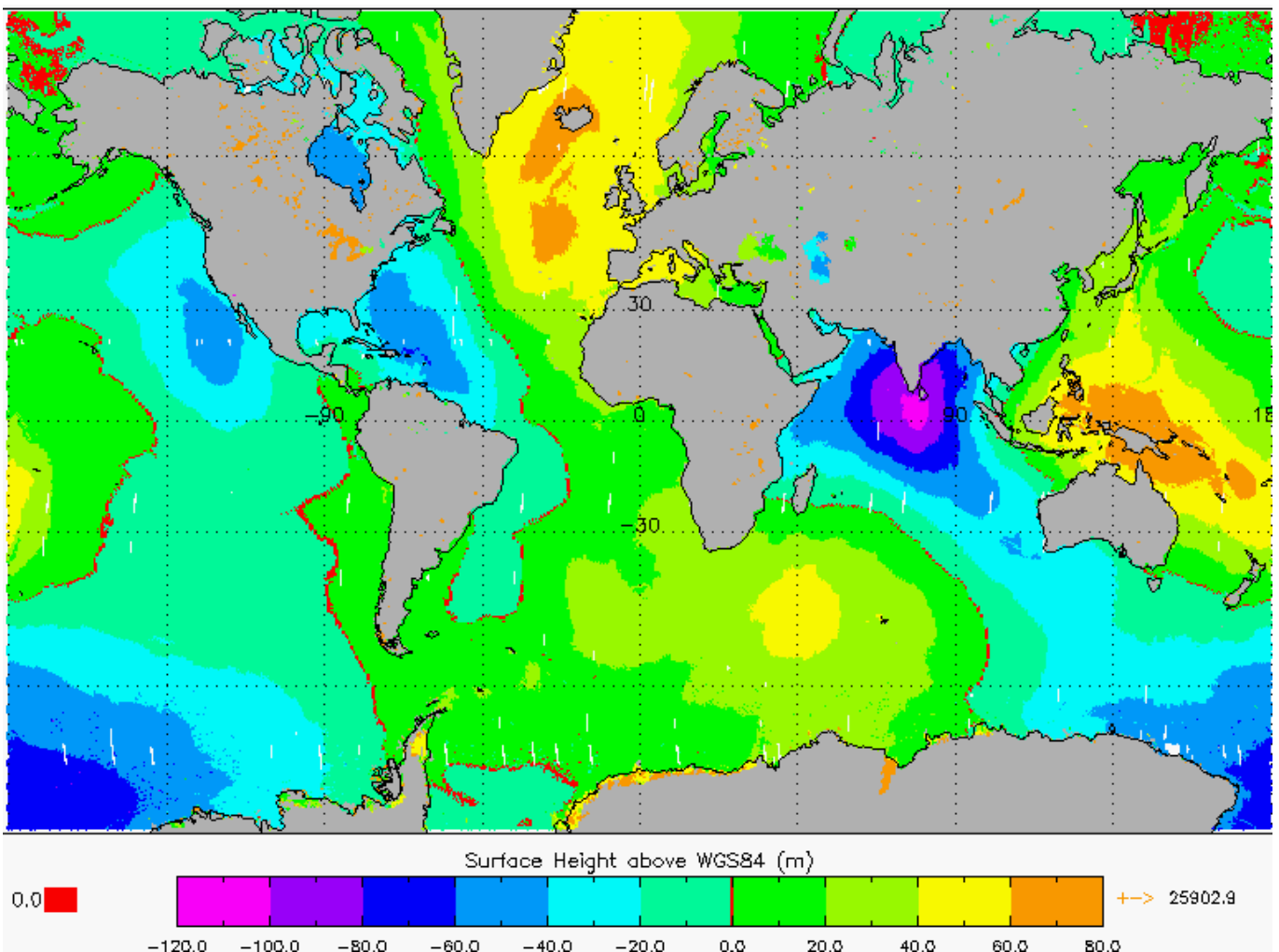


Figure 5-15 Global plots of Sea Surface Height over ocean areas only, for cycle 2.

5.5 Quality Flags

The CryoSat Level 2 data products include a Quality Flag word (field 43) for each 20 Hz measurement record. The bit values of this flag indicate an assessment of the measurement quality by the PDS processing chains.

Table 5-2 provides the statistics for each Quality Flag, from Field 43, for each mode during cycle 2. The results are provided for each mode and surface type. For SARIn mode the Quality Flag results are provided for Ice and Land. Although SARIn mode is predominantly used over steeply sloping ice-sheet margins, small ice caps and areas of mountain glaciers, there are also additional areas where this mode is also operated over land areas such as over Africa and along the Chilean coast.

Quality Flag	LRM – Ice	LRM – Land	LRM – Ocean	SARIn – Ice	SARIn – Land	SAR - Ocean
BLOCK DEGRADED	0%	0%	0%	0%	0%	0%
ORBIT ERROR	0%	0%	0%	0%	0%	0%
ORBIT DISCONTINUITY	0%	0%	0%	0%	0%	0%
HEIGHT ERROR	18.85%	80.11%	0.50%	9.47%	28.24%	0%
SSHA INTERP ERROR	0%	0%	0%	0%	0%	0%
CALIBRATION WARNING	0%	0%	0%	0%	0%	0%
BACKSCATTER ERROR	17.26%	78.14%	0.49%	0%	0.01%	0%
PEAKINESS ERROR	0%	0%	0%	0%	0%	0%
FREEBOARD ERROR	100%	100%	100%	100%	100%	100%
SAR DISCRIM = OCEAN	0%	0%	0%	0%	0%	17.77%
SAR DISCRIM = LEAD	0%	0%	0%	0%	0%	10.10%
SAR DISCRIM = SEA ICE	0%	0%	0%	0%	0%	34.18%
SAR DISCRIM = UNKNOWN	0%	0%	0%	0%	0%	37.96%
SARIN XTRACK ERROR	0%	0%	0%	69.84%	98.94%	0%
SARIN RX1 ERROR	0%	0%	0%	0%	0%	0%
SARIN RX2 ERROR	0%	0%	0%	0%	0%	0%
SIRAL IDENTIFIER	0%	0%	0%	0%	0%	0%
SURFACE MODEL UNAVAILABLE	0%	0%	0%	0%	0%	0%
MISPOINTING ERROR	0%	0%	0%	0%	0%	0%
DELTA TIME ERROR	0%	0%	0%	0%	0%	0%

Table 5-2 Quality Flag results for cycle 2.

Currently the Quality Flag for 'Freeboard Error' is set in all products as this parameter is currently not provided in the Level 2 products and the value is presently set to the default value of -9999 (please refer to section 5.4.5 for more details).

It has been noted that the number of errors arising from the 'Backscatter Error' and 'Height Error' Quality Flag is much higher than expected over land-ice areas and this is currently part of an on-going investigation by expert teams.

The SARIn Xtrack Error flag is used to indicate records flagged as ambiguous. In Level 2I SARIn products, an Ambiguity Flag (field 73) is used to indicate ambiguity and is also used to indicate why the record has been flagged as ambiguous. Within the corresponding Level 2 SARIn products, there is only one bit available within the record structure to show this, so it is currently set if the difference between the computed surface elevation and the DEM is >50 m or if there isn't a DEM at the current location to check.

As the DEM is only available for Greenland and Antarctica, the SARIn Xtrack flag can be ignored in all other regions. Currently there is an on-going investigation into the high number of errors from the 'SARIn X-track Error' Quality Flag over Antarctica.

5.6 Crossover Analysis

This section provides results from crossover processing of Level 2 data from cycle 2.

5.6.1 CROSSOVER STATISTICS

The crossover statistics for cycle 2, from each mode, is provided in Table 5-3 for Antarctica, Greenland and the Global Oceans.

Location	Mode	No of crossovers	RMS	Mean	XTT Mean
Antarctica	LRM	46202 (89.1%) < 10.0 m	0.43 m	-0.01 m	0.14 ms
	SARIn	9379 (86.4%) < 10.0 m	1.88 m	-0.01 m	0.03 ms
Greenland	LRM	319 (93.5%) < 1.0 m	0.43 m	0.23 m	1.98 ms
	SARIn	1600 (81.2%) < 1.0 m	1.95 m	0.02 m	-1.01 ms
Global Oceans	LRM	8891 (99.6%) < 1.0 m	0.21 m	-0.10 m	0.47 ms

Table 5-3 Cycle 2 Crossover statistics.

5.6.2 ELEVATION MAPS

Figure 5-16 and Figure 5-17 show spatial polar maps of elevation differences at crossover per 10 km² grid cells for Level 2 products from cycle 2.

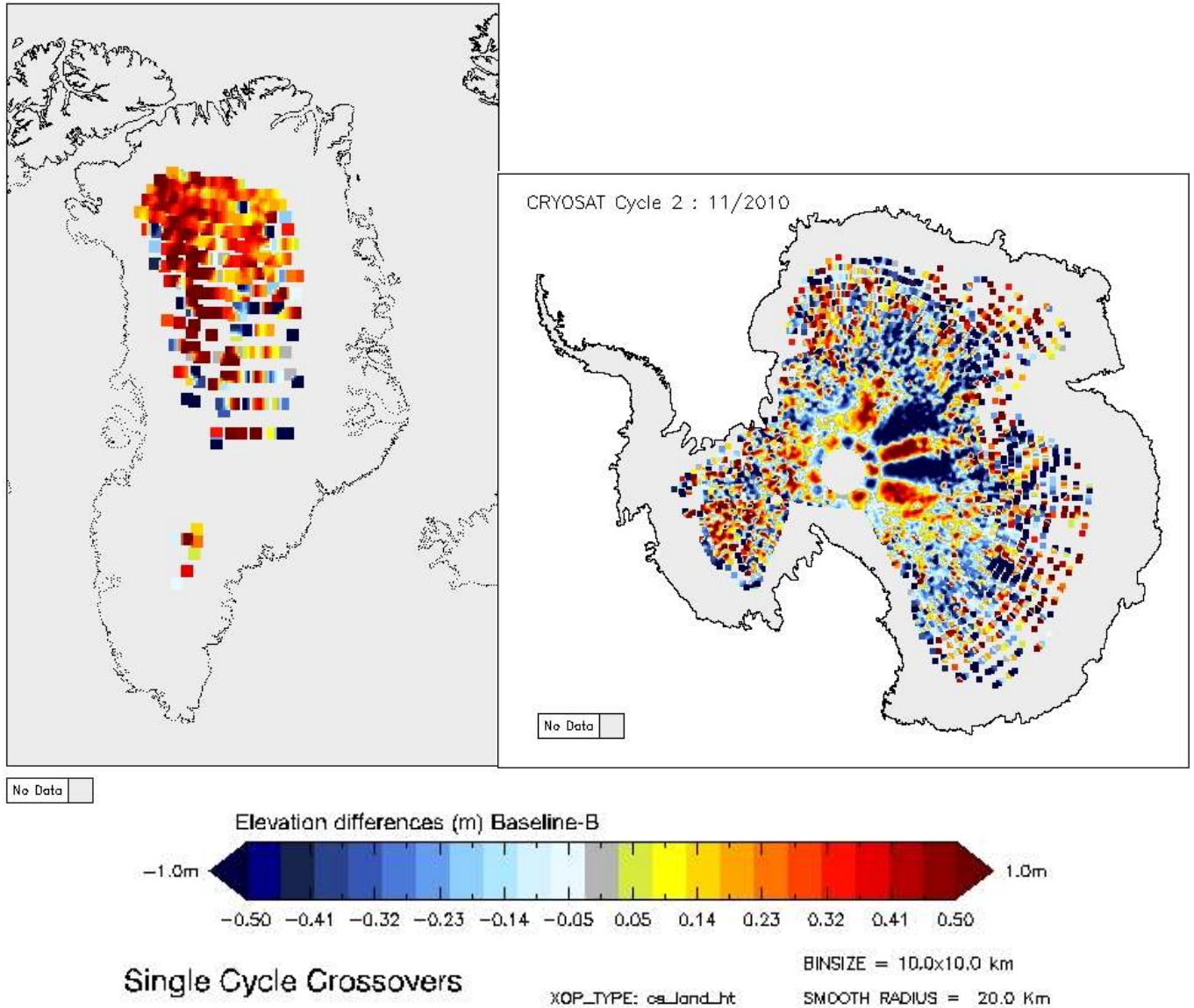


Figure 5-16 Greenland and Antarctica maps of LRM elevation differences for cycle 2.

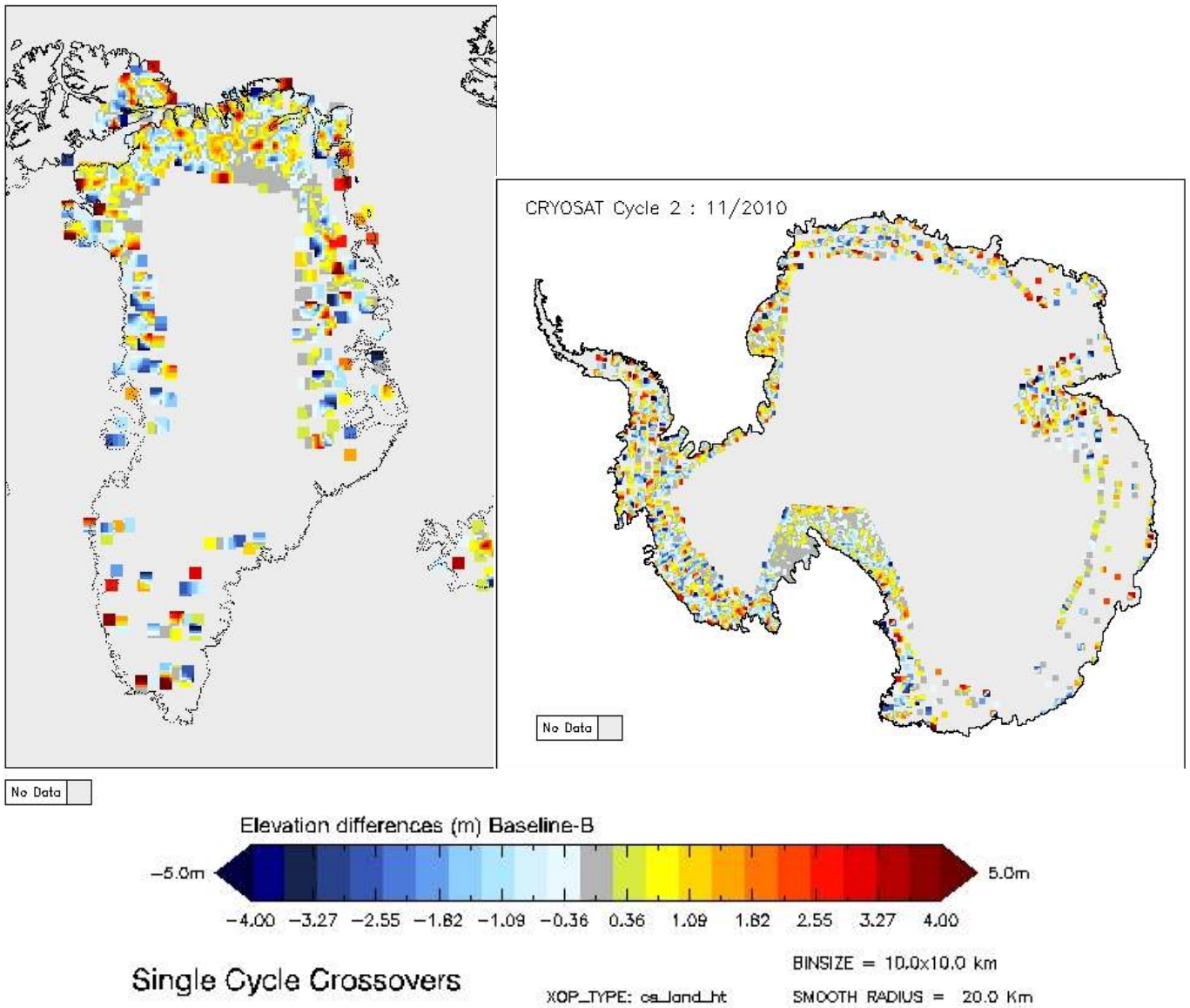


Figure 5-17 Greenland and Antarctica maps of SARIn elevation differences for cycle 2.

5.6.3 BACKSCATTER (SIGMA0) MAPS

Figure 5-18 and Figure 5-19 provide spatial polar maps of power differences at crossover per 10 km² grid cells for Level 2 products from cycle 2.

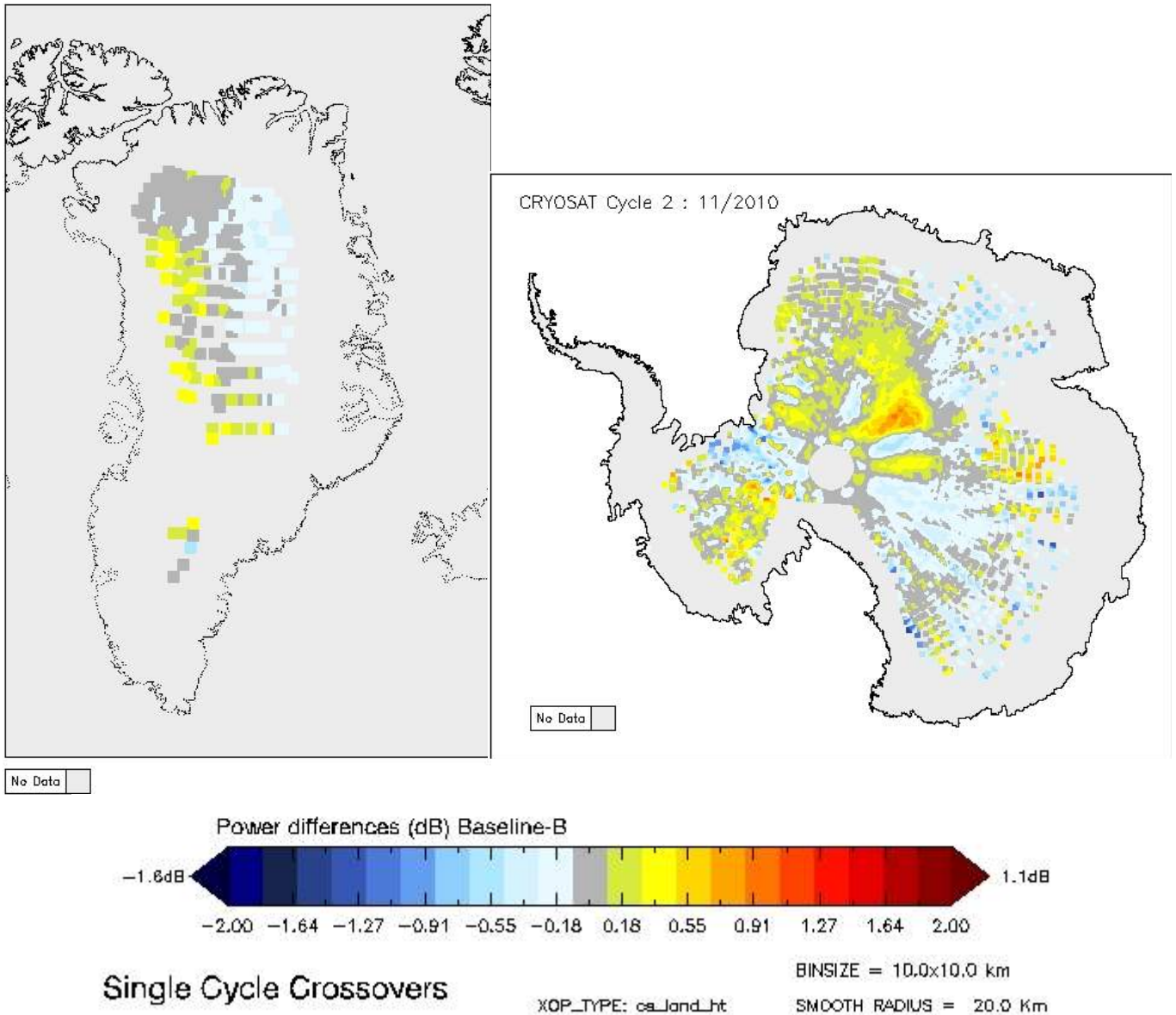


Figure 5-18 Greenland and Antarctica maps of LRM power differences for cycle 2.

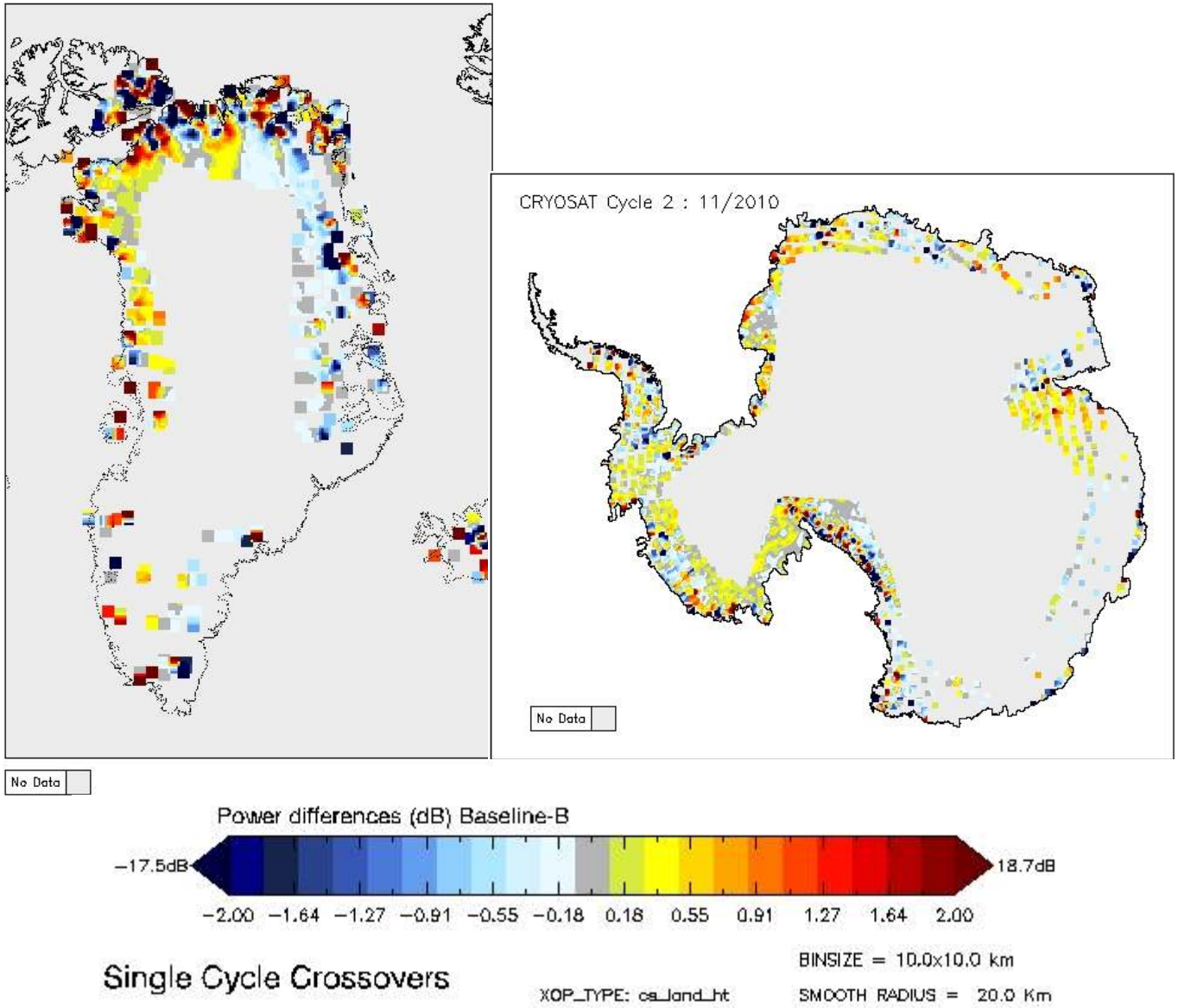


Figure 5-19 Greenland and Antarctica maps of SARIn power differences for cycle 2.

5.7 External Auxiliary Corrections

Surface Height measurements, which are provided in the SIRAL Level 2 products, are corrected for atmospheric propagation delays and geophysical surface variations. This section provides global maps of the value of each correction for cycle 2.

5.7.1 DRY TROPOSPHERIC CORRECTION

This is the correction for the path delay in the radar return signal due to the dry gas component of the atmosphere. It has a typical range from 1.7 to 2.5 m.

For CryoSat processing the Dry Tropospheric Correction is not provided via a specific auxiliary data file but is computed by the processors using ECMWF surface pressure files.

Figure 5-20 shows, geographically, the value of the Dry Tropospheric Correction, applied to the Level 2 data from cycle 2. The global RMS value of this correction for this cycle is **2216 mm**.

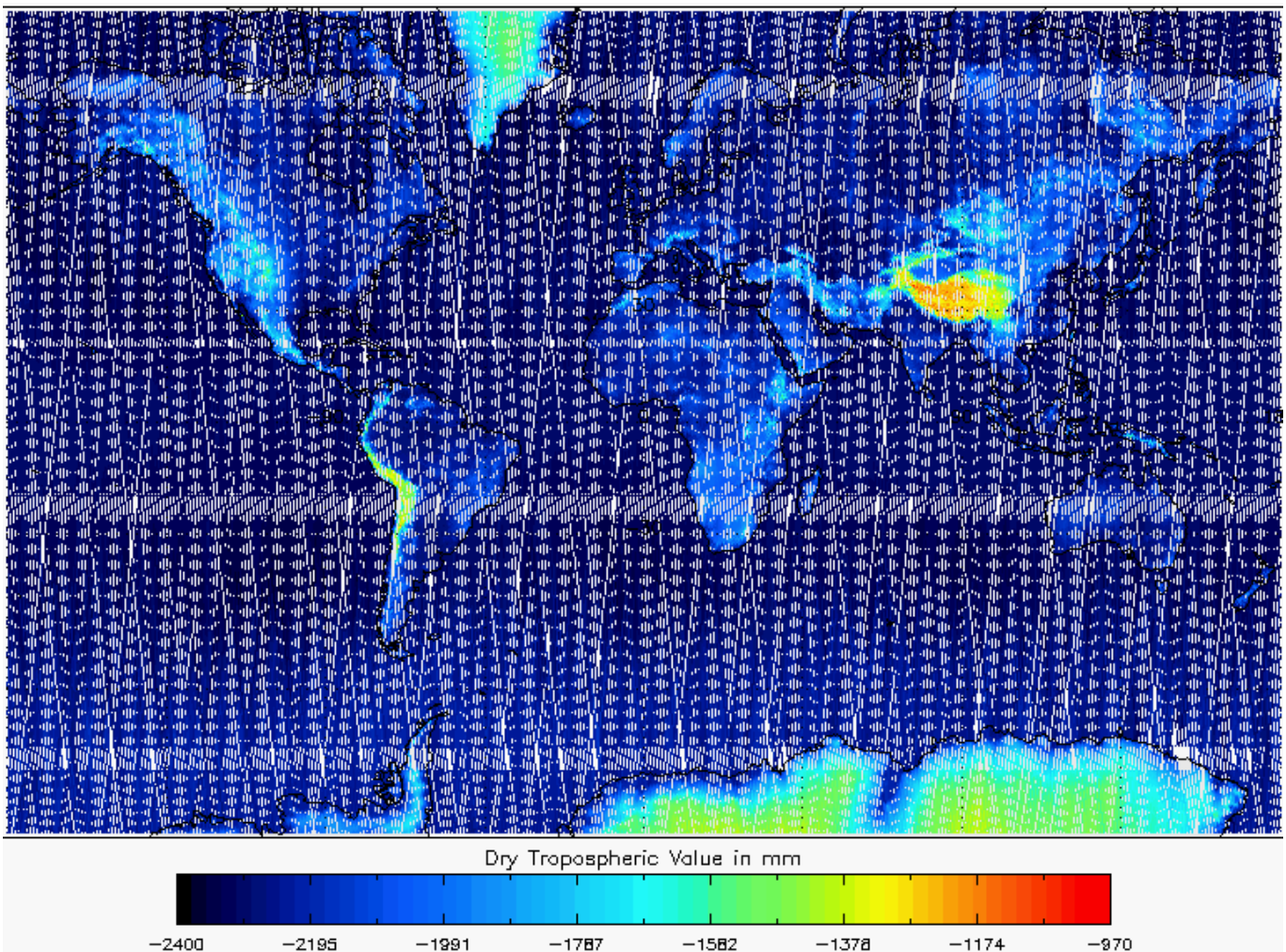


Figure 5-20 Global plot of Dry Tropospheric Correction for cycle 2.

5.7.2 WET TROPOSPHERIC CORRECTION

The wet troposphere correction is the correction for the path delay in the radar return signal due to liquid water in the atmosphere. It is calculated from radiometer measurements and meteorological models and has a typical range from 0 to 50 cm.

Unlike the Dry Tropospheric Correction, the Wet Tropospheric Correction is retrieved directly from ECMWF analysed grids. These correction files are then simply formatted to the CryoSat PDS file standard before being directly used in the processor.

Figure 5-21 shows, geographically, the value of the Wet Tropospheric Correction, applied to the Level 2 data. The global RMS value of this correction for cycle 2 is **145 mm**.

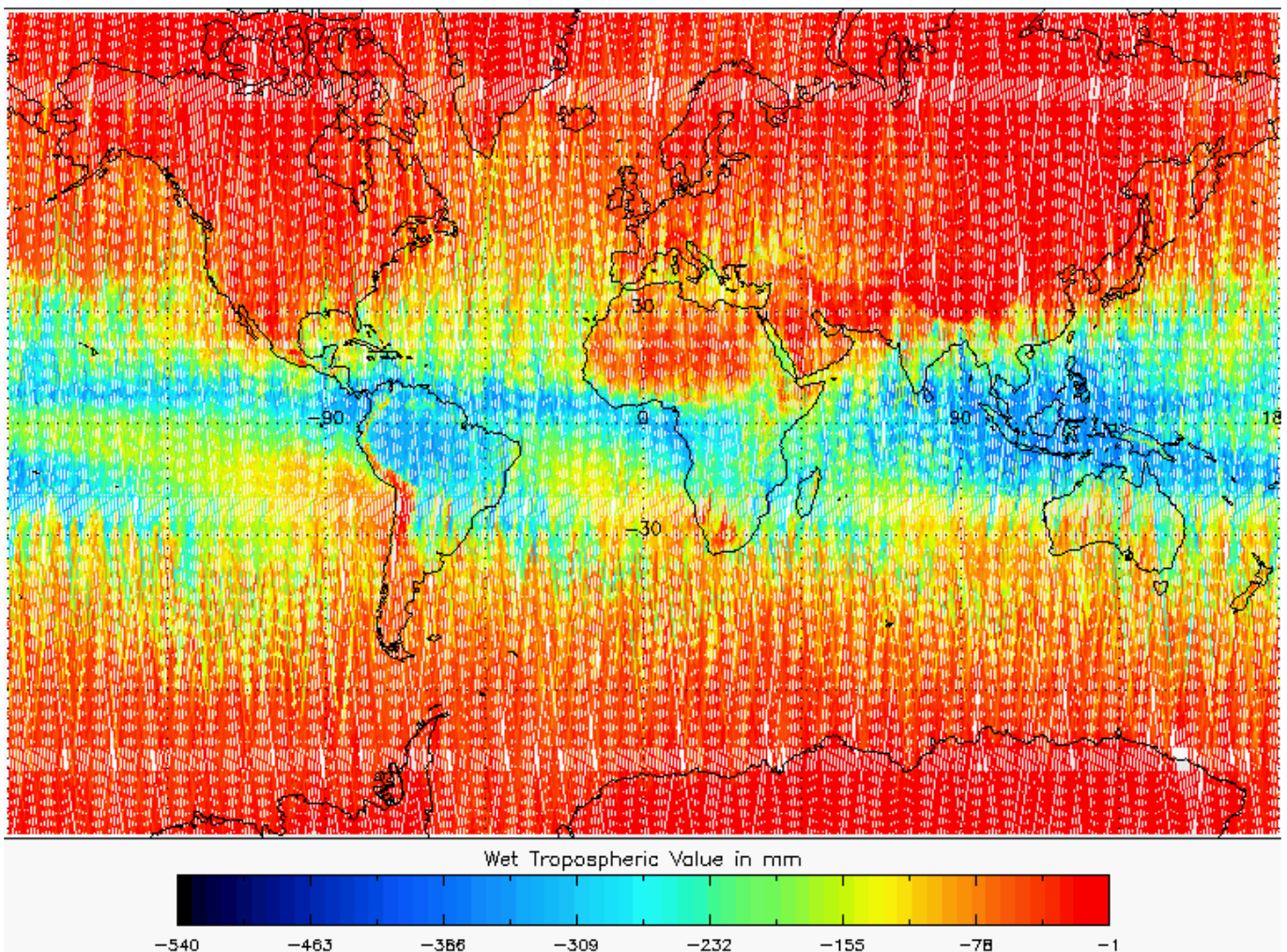


Figure 5-21 Global plot of Wet Tropospheric Correction for cycle 2.

5.7.3 INVERSE BAROMETRIC CORRECTION

The Inverse Barometric Correction compensates for variations in sea surface height due to atmospheric pressure variations, which is known as atmospheric loading. It has a typical range from -15 to +15 cm, and is calculated from data provided by Meteo France via the CNES SSALTO system. This correction is only used over sea ice, in SAR mode, and when the surface type is 'open ocean'.

Figure 5-22 shows, geographically, the value of the Inverse Barometric Correction applied to the Level 2 data. The global RMS value of this correction for cycle 2 is **200 mm**.

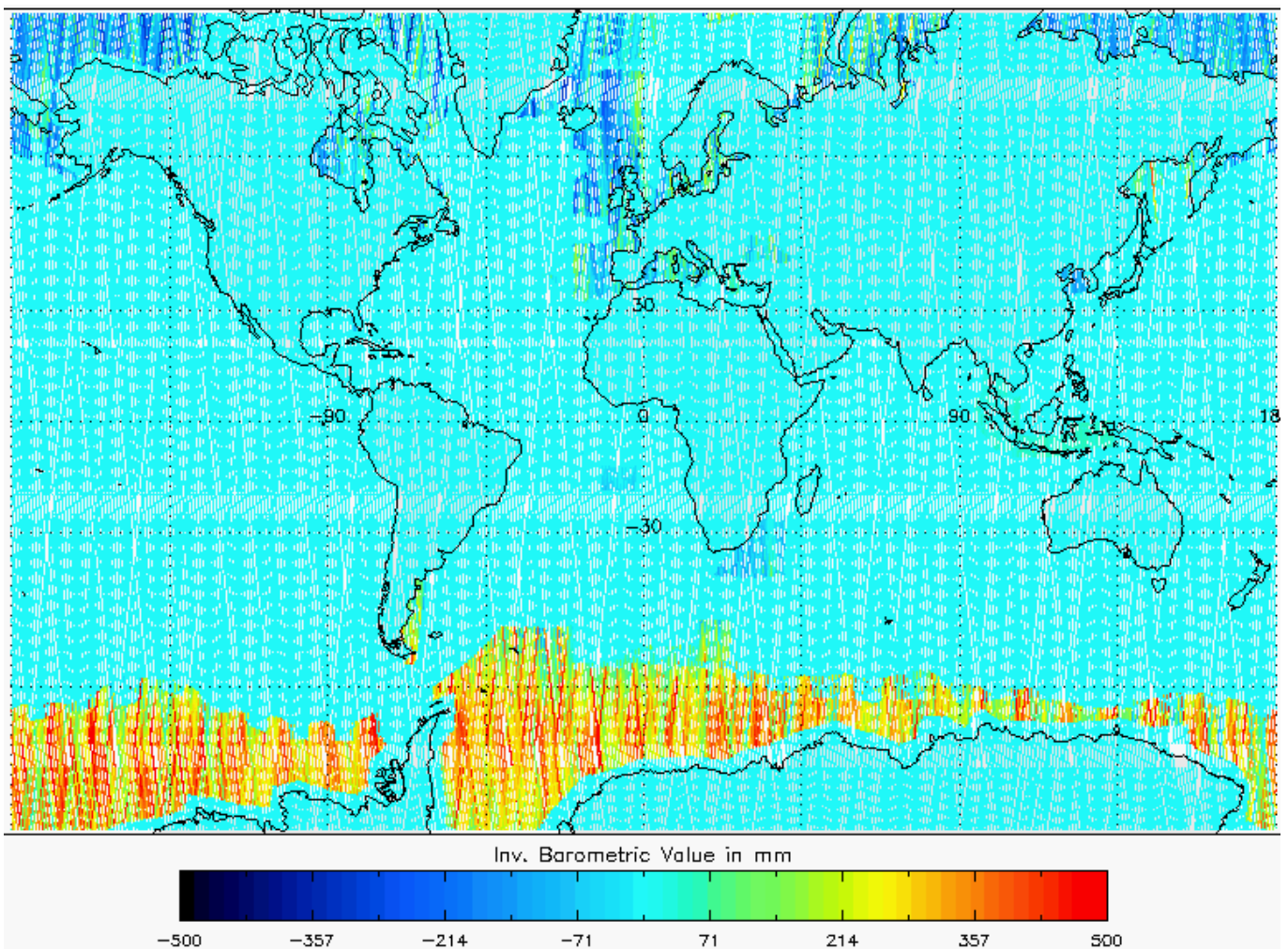


Figure 5-22 Global plot of Inverse Barometric Correction for cycle 2.

5.7.4 DYNAMIC ATMOSPHERE CORRECTION

The dynamic atmospheric correction compensates for variations in sea surface height due to atmospheric pressure and winds. It has a typical range from -15 to +15 cm and is taken from the MOG2D model data provided by Meteo France via the CNES SSALTO system. This correction is only used over ocean, without sea-ice cover, in SARIn and LRM mode, when the surface type is 'open ocean'.

Figure 5-23 shows, geographically, the value of the Dynamic Atmospheric Correction, computed and applied to the Level 2 data. The global RMS value of this correction for cycle 2 is **114 mm**.

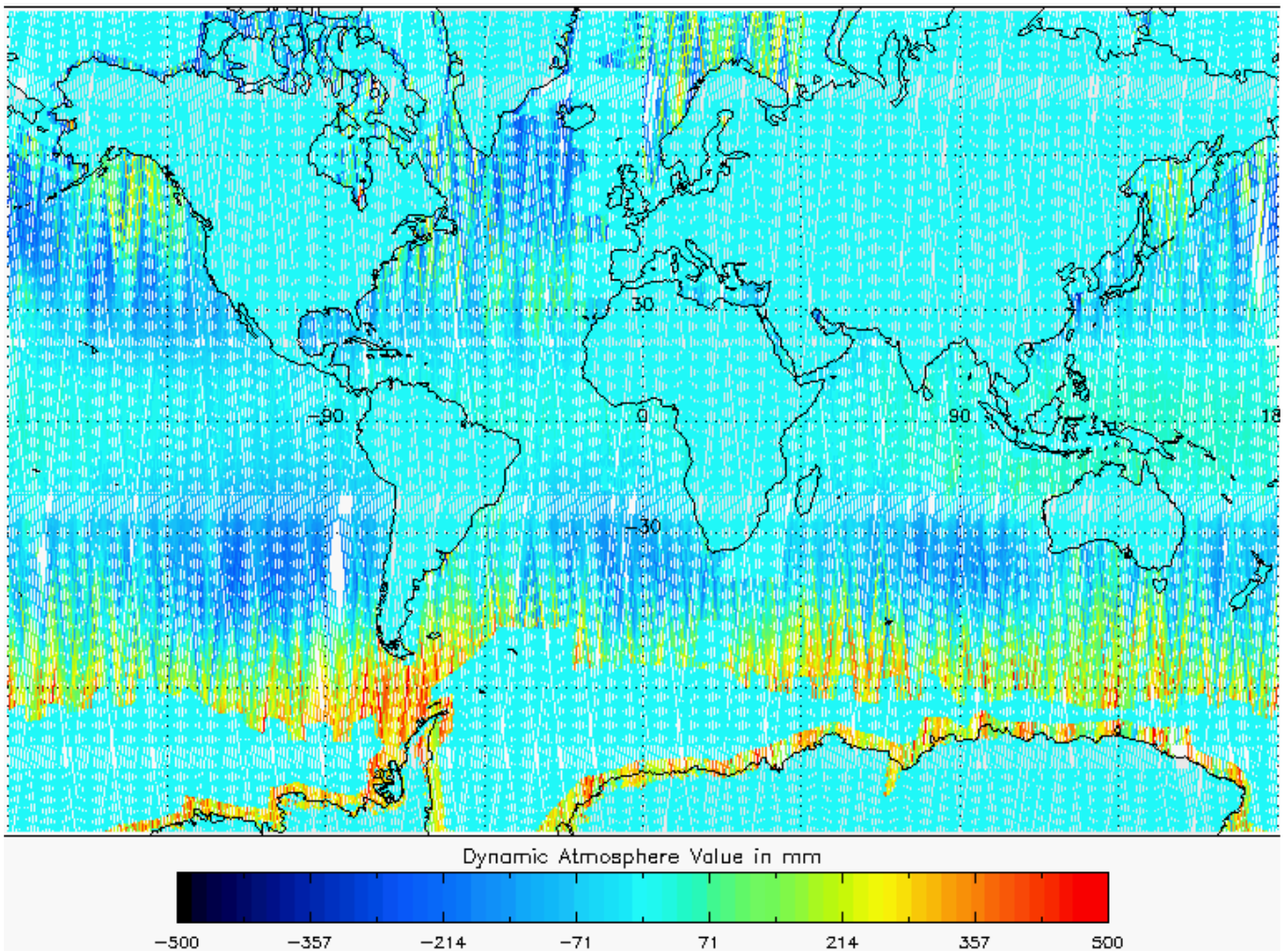


Figure 5-23 Global plot of Dynamic Atmosphere Correction for cycle 2.

5.7.5 IONOSPHERIC CORRECTION

The Ionospheric Correction compensates for the free electrons in the Earth's ionosphere slowing the radar pulse. Solar control of the ionosphere leads to geographic and temporal variations in the free electron content, which can be modelled, or measured, for example using the GPS satellite network.

There are two sources currently used to derive this correction for CryoSat, the Global Ionospheric Map (GIM) and the Bent model. The GIM correction uses GPS measurements and is sourced from CNES via SSALTO as a dynamic daily file. The Bent Model is derived from a static file and is based on knowledge of a solar activity index, such as sunspots.

The correction has a typical range from 6 to 12 cm. CryoSat Level 1B products currently contain the Ionospheric Correction values derived from both the GIM and Bent Model. At Level 2, only the Ionospheric Correction value applied to the range is provided. This is nominally derived using the GIM by default, however when this is unavailable the Bent model is used as an alternative.

Figure 5-24 shows, geographically, the value of the Ionospheric Correction applied to the Level 2 data. The global RMS value of this correction for cycle 2 is **156 mm**.

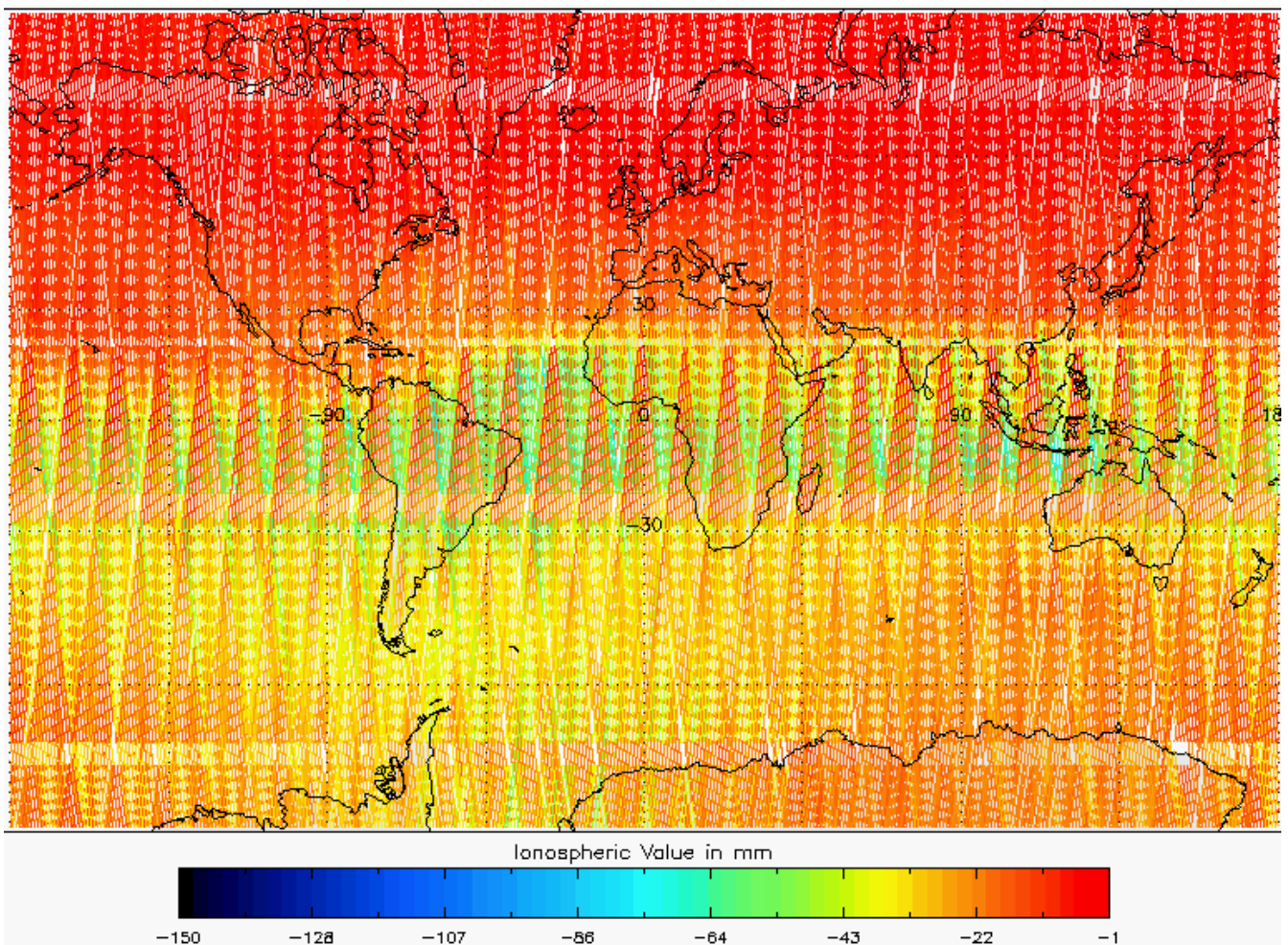


Figure 5-24 Global plot of Ionospheric Correction for cycle 2.

Currently, the Bent Model does not provide values for latitudes >82 degrees. However, this should not affect the nominal science data as, during offline Level 2 processing, the Ionospheric Correction, as shown in Figure 5-24, is taken from the GIM model by default and the Bent Model is only used as an alternative when this GIM is not available.

6 ANOMALY REPORTS

An updated list of all known anomalies which have been opened and tracked on the IPF and affect the quality of the distributed data products, is provided at the link below:

<https://earth.esa.int/web/guest/missions/cryosat/product-status>.

This list of anomalies is complete and up to date as of 15 July 2013 and is updated on a regular basis.

7 README DOCUMENTS ON PERFORMANCE AND QUALITY

This section lists any current readme documents or notifications which have been issued and are relevant to the quality of CryoSat data.

There were no readme documents issued during the period covered by this cycle.